



SOLTHERM

SYSTEMS BY BOLIX

PRODUCT CATALOGUE



IMPACT RESISTANT EXTERNAL THERMAL INSULATION SYSTEM - ETA SOLTHERM HD /EPS BOARDS/3

EXTERNAL THERMAL INSULATION COMPOSITE SYSTEM /EPS BOARDS/ - ETA SOLTHERM P, DIBT S, NSAI11

EXTERNAL THERMAL INSULATION COMPOSITE SYSTEM /MINERAL WOOL/ - ETA SOLTHERM W, NSAI.....17



The certificates are being prepared:

BBA Soltherm

CSTB Soltherm

ATG Soltherm

**EUROPEAN TECHNICAL ASSESSMENT
SOLTHERM HD**
European Technical Assessment
ETA-13/0927
of 19/03/2015
Valid to: indefinite



**Deutsches Institut für Bautechnik
DIBt**
Graphite EPS board
Z-23.15-1970 OF 28/04/2015
Valid to: 28/04/2019



INSTYTUT TECHNIKI BUDOWLANEJ
PL 00-611 WARSZAWA
ul. Filiova 1
TEL: (+48 22) 825-04-71
EBC: (+48 22) 825-70-55
FAX: (+48 22) 825-52-86
www.itb.pl

Member of
ETA
www.eta.eu

Designated according to Article 29 of Regulation (EU) No 305/2011 and member of EOTA (European Organisation for Technical Assessment)

European Technical Assessment **ETA-13/0927**
of 19/03/2015

General Part

Technical Assessment Body issuing the European Technical Assessment Instytut Techniki Budowlanej

Trade name of the construction product SOLTHERM HD

Product family to which the construction product belongs External Thermal Insulation Composite System with rendering (ETICS)

Manufacturer BOLIX S.A.
ul. Stolarska 8
PL 34-300 Zywiec, Poland

Manufacturing plant BOLIX S.A.
ul. Stolarska 8
PL 34-300 Zywiec, Poland

This European Technical Assessment contains 15 pages including 2 Annexes which form an integral part of this Assessment

This European Technical Assessment is issued in accordance with Regulation (EU) No 305/2011, on the basis of Guideline for European Technical Approval ETAG 004, Edition 2013 'External Thermal Insulation Composite Systems with rendering', used as European Assessment Document (EAD)

This version replaces ETA-13/0927 issued on 27/06/2013

Deutsches Institut für Bautechnik **DIBt**

Allgemeine bauaufsichtliche Zulassung

Zulassungsbereich für Bauprodukte und Bauarten
Bezeichnendes Produkt: Eine vom Baufertigstellern (Ländern) gewählte geeignete Anzahl des Europäischen Rechts. Mitglieder der EOTA, der UETA und der NFPA.

Datum: 28.04.2014 | Gültig bis: 28.04.2019

Zulassungsnummer Z-23.15-1970

Gültigkeitsdauer vom 28. April 2014 bis 28. April 2019

Antragsteller BOLIX S.A.
ul. Stolarska 8
34-300 ZYWIEC
POLEN

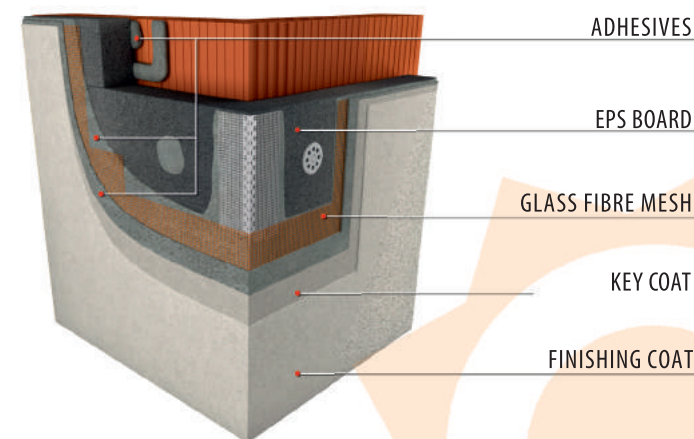
Zulassungsgegenstand: Wärmedämmstoffe aus expandiertem Polystyrol (EPS) nach DIN EN 13163:2013-03

Diese allgemeine bauaufsichtliche Zulassung regelt die Verwendung der in Anlage 1 genannten Produkte nach der harmonisierten Norm DIN EN 13163:2013-03.

Darüber genannte Zulassungsgegenstand wird hiermit allgemein bauaufsichtlich zugelassen. Diese allgemeine bauaufsichtliche Zulassung umfasst fünf Seiten und eine Anlage.

DIBt

Wille / K. G. Wille & Sohn AG, 30161 Berlin, Tel.: +49 30 76790 0 | Fax: +49 30 76790 120 | E-Mail: info@ibc.de | www.dibt.de



SOLTHERM CLASSIC ACRYLIC



Classic Acrylic System is one of our very best sellers. It offers both excellent quality and real value for money. Acrylic finish coat provides increased resistance to weather conditions and unlimited colour variations. Classic Acrylic System is easy to clean and resistant to mechanical damage. Its an economical system, recommended for facades exposed to dirt and difficult operating conditions such as schools, workshops, stores situated close to roads and factories.

SOLTHERM HD WEATHER



The **Soltherm HD Weather System** is specially developed for damp and rainy weather conditions. It consists of perfectly matched products, which can set and cure under high humidity and low temperature conditions. This enables all year through installation. Its also provides a self cleaning effect, increased resistance to salt efflorescence and UV radiation, thanks to which the colours are vivid, lasting and do not fade. Since the system is vapour permeable, the moisture from the wall is driven to the exterior. System is economical and recommended for single-family houses.

SOLTHERM HD SUPREME



The **Soltherm HD Supreme** is an advanced solution which provides very high impact resistance and flexibility achieved thanks to premium adhesive, double mesh and silicone render used in the system. It also provides a self cleaning effect and is fully protected from organic growth. The system prevents damages inside walls caused by water absorption and accumulation. The The Soltherm HD Supreme is ideal for schools, workshops, stores situated close to roads and factories as well as for building exposed to adverse weather conditions.

SOLTHERM PREMIUM ACRYLIC



The **Soltherm Premium Acrylic System** is the best solution where increased impact resistance and prevention of algae and fungi growth is required, but the budget is limited. The system provides enhanced resistance to mechanical damage, vibrations and stresses, what make it perfect for public utility buildings, schools, social housing, etc. Additional advantages the system offers: increased resistance to algae and fungi growth, enhanced flexibility and vapour permeability thanks to which moisture is driven to the exterior. Soltherm Premium Acrylic ensures durable and vivid colours.

SOLTHERM HD WEATHER PLUS



The **Soltherm HD Weather PLUS System** has all the advantages of the HD Weather System plus its high performance silicone finish coat provides increased impact resistance. Its especially recommended for buildings situated in the vicinity of big industrial areas and buildings exposed to adverse weather conditions. The system also provides a self cleaning effect and is fully protected from organic growth.

SOLTHERM HD ULTIMATE



The **Soltherm HD Ultimate** is the most advanced and strongest external insulation system in Europe. The armour mesh and specialist dispersion adhesive used in the system make it indestructible. It has a confirmed impact resistance of up to 130J, what makes it ideal for schools, stores, public buildings and social housing, where extremely high level of performance is required. Its also provides extremely high flexibility, best adhesion to polystyrene and a self cleaning effect. Its advanced and perfectly matched products ensure long-lasting thermal insulation for years.

- Perfectly matched products which cure in high humidity conditions
- All year through installation even on damp and rainy weather
- Minimal downtime
- Impact resistant walls, including acts of vandalism

- Prevention of algae and fungi growth
- Self-cleaning effect by rainfall
- Lasting and vivid colours, which do not fade no efflorescence and colour variations
- Make up for installation mistakes

- System which ensures that the moisture is driven to the exterior
- No damage inside the wall caused by water absorption and accumulation
- Low maintenance costs

SOLTHERM CLASSIC ACRYLIC



increased resistance to weather conditions
unlimited colour variations
easy to clean

Economical system recommended for facades exposed to dirt

Adhesive to EPS boards	SOLTHERM SA
EPS boards	≥TR100(EPS70)
Fixing	standard
Glass fibre mesh	145 g/m ² or 158 g/m ² or 174 g/m ²
Base coat	SOLTHERM UB
Key coat	SOLTHERM AP COLOUR
Finishing coat	SOLTHERM AFC

SOLTHERM PREMIUM ACRYLIC



high resistance to the effect of atmospheric factors and microbial growth
enduring colours that don't fade
increased impact resistance

Perfect for utility buildings, schools, social housing.

Adhesive to EPS boards	SOLTHERM SA
EPS boards	≥TR100(EPS70)
Fixing	standard
Glass fibre mesh	145 g/m ² or 158 g/m ² or 174 g/m ²
Base coat	SOLTHERM UB-P
Key coat	SOLTHERM SNP COLOUR
Finishing coat	SOLTHERM AF-P+

SOLTHERM HD WEATHER



high water vapour permeability
self-cleaning effect
high U V resistance
increased resistance to salt efflorescence

Economical system recommended for single family houses.

Adhesive to EPS boards	SOLTHERM SA
EPS boards	≥TR100(EPS70)
Fixing	standard
Glass fibre mesh	145 g/m ² or 158 g/m ² or 174 g/m ²
Base coat	SOLTHERM UB-P
Key coat	SOLTHERM AP COLOUR
Finishing coat	SOLTHERM MTC
Primer	SOLTHERM SNP
Decorative coat	SOLTHERM STC-P+

SOLTHERM HD WEATHER PLUS



high impact resistance
low water absorption
hydrophobic (self-cleaning effect)
high resistance to the effects of atmospheric factors and microbial growth

Recommended for buildings situated near big industrial areas.

Adhesive to EPS boards	SOLTHERM SA
EPS boards	≥TR100(EPS70)
Fixing	standard
Glass fibre mesh	145 g/m ² or 158 g/m ² or 174 g/m ²
Base coat	SOLTHERM UB-P
Key coat	SOLTHERM SNP COLOUR
Finishing coat	SOLTHERM SFC-P+

SOLTHERM HD SUPREME



very high impact resistance
low water absorption
hydrophobic (self-cleaning effect)
high resistance to the effects of atmospheric factors and microbial growth

Recommended for buildings exposed to adverse weather conditions.

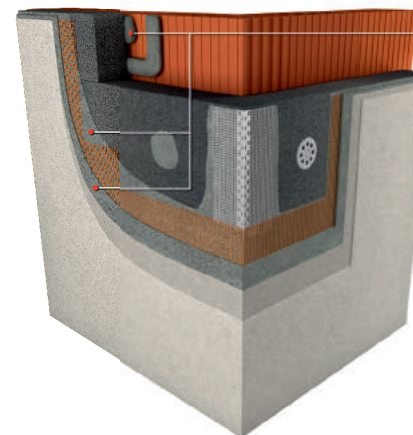
Adhesive to EPS boards	SOLTHERM UB-P
EPS boards	≥TR100(EPS70, EPS80)
Fixing	standard
Glass fibre mesh	2x145 g/m ² or 335+145 g/m ²
Base coat	SOLTHERM UB-P
Key coat	SOLTHERM SNP COLOUR
Finishing coat	SOLTHERM SFC-P+

SOLTHERM HD ULTIMATE

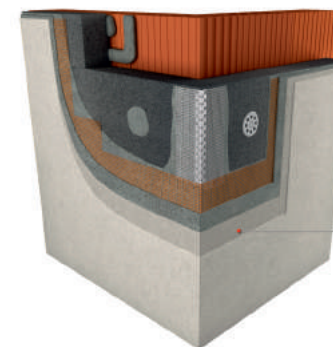


the most advanced solution on the market
extreme impact resistance up to 130J
the highest adhesion to polystyrene
extremely high flexibility
For use in places especially exposed to damage.

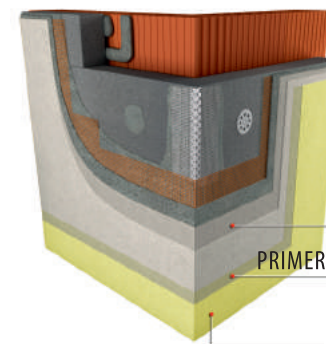
Adhesive to EPS boards	SOLTHERM UB-P
EPS boards	≥TR100(EPS70, EPS80)
Fixing	Ejot STR U 2G
Glass fibre mesh	145 g/m ² or 335+145 g/m ²
Base coat	SOLTHERM DA-P
Key coat	does not have to be primed
Finishing coat	SOLTHERM SFC-P+



ADHESIVES	SOLTHERM SA	SOLTHERM UB-P with microfibres resistant to cracking and breaking	SOLTHERM DA-P cement-free extreme impact resistance extremely high flexibility coloured paste
To install EPS boards	YES	YES	NO
Base coat	NO	YES	YES
Adhesion to concrete	> 0,3 MPa	> 0,5 MPa	
Adhesion to insulation board (failure in the polystyrene)	> 0,1 MPa	> 0,1 MPa	
Slump	< 0,12 mm	< 0,12 mm	
Estimated coverage	approx. 4,0 kg/m ²	to install EPS boards and to apply as base coat approx. 4,0 kg/m ²	Base coat (single mesh): 2,4-3,5 kg/m ² Base coat (double mesh): 4,8-7,0 kg/m ² Recommended base coat thickness: min. 3 mm
Mixing proportions	4,8-5,3 l of water per 25 kg of adhesive	5,5 6,0 l of water per 25 kg of adhesive	
Open time	approx. 1,0h	approx. 2h	
Colour	grey	grey	Off-white and selected colours from the SOLTHERM Colour Palettes
Packaging	25 kg	25 kg	30 kg
The number of products on the pallet	1200 kg	1200 kg	720 kg



KEY COAT



KEY COAT

PRIMER

TOP COAT

KEY COATS/PRIMERS	SOLTHERM AP COLOUR	SOLTHERM SNP	SOLTHERM SNP COLOUR	SOLTHERM SP
	Protects the primed surface against adverse effect of moisture. Facilitates paint and render application and regulates setting.			
Use	Before applying acrylic and mineral render	Before applying silicone paints and silicone thin-coat render	Before applying silicone thin-coat render	Before applying acrylic paints and for absorptive substrates (walls)
Drying time of one layer	4-6 h	4-6 h	4-6 h	4-6 h
Colour	white or compliant with SOLTHERM Colour Palettes	milky	white or compliant with SOLTHERM Colour Palettes	white or compliant with SOLTHERM Colour Palettes
The consumption for one layer	0,25-0,40 kg/m ²	0,10-0,20 kg/m ²	0,25-0,40 kg/m ²	0,1-0,2 kg/m ²
Packaging	5, 10, 25 kg	5, 20 kg	5, 25 kg	5, 20 kg
The number of products on the pallet	400 kg, 440 kg, 600 kg	400 kg, 480 kg	400 kg, 600 kg	400 kg, 480 kg

European Technical Assessment **ETA-13/0927**
of 19/03/2015

General Part

Technical Assessment Body issuing the European Technical Assessment: Instytut Techniki Budowlanej

Trade name of the construction product: SOLTHERM HD

Product family to which the construction product belongs: External Thermal Insulation Composite System with rendering (ETICS)

Manufacturer: BOLLIX S.A.
ul. Stolarska 9
PL 34-300 Zyrardow, Poland

Manufacturing plant: BOLLIX S.A.
ul. Stolarska 9
PL 34-300 Zyrardow, Poland

This European Technical Assessment contains 15 pages including 2 Annexes which form an integral part of this Assessment

This European Technical Assessment is issued in accordance with Regulation (EU) No 305/2011, on the basis of

This version replaces: ETA-13/0927 issued on 17/06/2013

Allgemeine bauaufsichtliche Zulassung

Zulassungsbereich: Z-22.19-1975

Zulassungsdatum: 26. April 2015

Antwortschrift: BOLLIX S.A.
ul. Stolarska 9
PL 34-300 Zyrardow, Poland

Zulassungsbereich: Mineralwolle aus expandiertem Polystyrol (EPS) nach DIN EN 12963:2013-05

Diese allgemeine bauaufsichtliche Zulassung regelt die Verwendung von in Anlage 1 genannter Produkten nach den besonderen Regeln nach EN 12963:2013-05

Darüber hinausige Zulassungsgrenzen sind dem Integralen Zulassungsdokument zuzugleichen.

Diese allgemeine bauaufsichtliche Zulassung ersetzt die Zulassung von ETA-13/0927



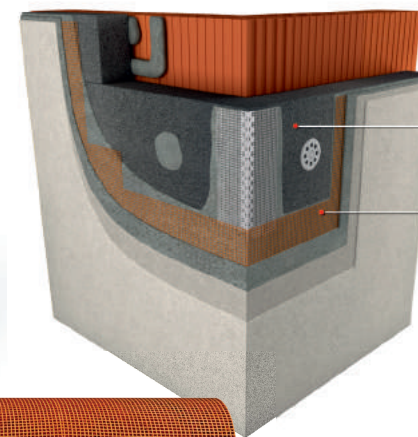
FINISHING COAT

FINISHING COATS	SILICONE RENDERS SOLTHERM SFC-P increased resistance to biological contamination high flexibility vapour permeability	SILICONE RENDERS WITH WATER BEADING EFFECT SOLTHERM SFC-P+ high impact resistance and flexibility high resistance to the effect of atmospheric factors and microbial growth water beading effect	SILICATE-SILICONE RENDERS SOLTHERM AF-P+ high resistance to the effect of atmospheric factors and microbial growth durable colours high impact resistance
Render texture and thickness	grained 1,5 mm, 2 mm ribbed 2,5 mm	grained 1,5 mm, 2 mm	grained 1,5 mm, 2 mm
Colours	compliant with SOLTHERM Colour Palettes	compliant with SOLTHERM Colour Palettes	compliant with SOLTHERM Colour Palettes
Consumption	from ca 2,0 3,5 kg for 1 m ²	from ca 1,8 3,5 kg for 1 m ²	from ca 2,0 3,5 kg for 1 m ²
Packaging	30 kg	30 kg	30 kg
The number of products on the pallet	720 kg	720 kg	720 kg



KEY COAT
PRIMER
TOP COAT

TOP COATS	ACRYLIC PAINT SOLTHERM ACP - highly resistant to changing weather conditions	ACRYLIC PAINT SOLTHERM ACP Eco-shield - increased resistance to biological contamination	SILICONE PAINT SOLTHERM STC-P - increased resistance to biological contamination - high UV resistance - vapour permeable - hydrophobic	SILICONE PAINT SOLTHERM STC-P+ - highly resistant to changing weather conditions and to biological contamination - vapour permeable - hydrophobic
Gloss	matt			
Resistance to wet scrubbing	>2000 brush strokes	>2000 brush strokes	>2000 brush strokes	> 8000 brush strokes
Complete curing	24 h			
Bulk density	approx. 1,45 kg/dm ³			
Drying time of one layer	approx. 2 h	approx. 2 h	approx. 4 h	approx. 4 h
Colour	white or compliant with SOLTHERM Colour Palettes			
Consumption for one paint layer	on even and non-absorptive substrates 0,12÷0,18 l/m ² , on uneven substrate 0,18÷0,28 l/m ²		on even and non-absorptive substrates 0,12÷0,20 l/m ² , on uneven substrate 0,20÷0,28 l/m ²	
Packaging	10, 18l			
The number of products on the pallet	440 l, 432 l			



EPS BOARD
GLASS FIBRE MESH

GLASS FIBRE MESH	AKE 145	HD 158 / S	HD 174 / S	ARMOUR MESH HD 335 / S
Weight [g/m ²]	145	158	174	335
Packaging	Roll 55 m	Roll 50 m	Roll 50 m	Roll 25 m
Length	55 m	50 m	50 m	25 m
Width	1,1 m	1 m	1 m	1 m
Mesh opening size	4,0 x 4,5 mm	3,9 x 4,0 mm	3,8 x 3,2 mm ±5%	4,7 x 5,6 ±10%

EPS BOARD	GRAPHITE EPS BOARD FASADA 032
Declared thermal conductivity coefficient [W/mk]	$\lambda \leq 0,032$
Reaction to fire	E according to EN 13501
Dimensions [mm]	1000 x 500
Thickness [mm]	10-250

EXTERNAL THERMAL INSULATION COMPOSITE SYSTEMS /EPS BOARDS/

European Technical Assessment
SOLTHERM P

ETA 13/0928 of 19/03/2015
Valid to: indefinite



Deutsches Institut für Bautechnik
DIBt S

DIBt Z-33.84-1573 from 23.01.2015
Valid to: 26. 06. 2018



NSAI
Irish Agreement Board Certificate

No 12/0371



INSTYTUT TECHNIKI BUDOWLANEJ
PL 00-611 WARSZAWA
ul. Flakowa 1
tel.: (+48 22) 825-04-71
(+48 22) 825-78-55
fax: (+48 22) 825-52-86
www.itb.pl

Member of
ETA
www.eta.eu

European Technical Assessment **ETA-13/0928**
of 19/03/2015

General Part

Technical Assessment Body issuing the European Technical Assessment Instytut Techniki Budowlanej

Trade name of the construction product SOLTHERM P

Product family to which the construction product belongs External Thermal Insulation Composite System with rendering (ETICS) Composite

Manufacturer BOLIX S.A.
ul. Stolarska 8
PL 34-300 Zywiec, Poland

Manufacturing plant BOLIX S.A.
ul. Stolarska 8
PL 34-300 Zywiec, Poland

This European Technical Assessment contains 16 pages including 2 Annexes which form an integral part of this Assessment

This European Technical Assessment is issued in accordance with Regulation (EU) No 305/2011, on the basis of Guideline for European Technical Approval ETAG 004, Edition 2013 "External Thermal Insulation Composite Systems with rendering", used as European Assessment Document (EAD)

This version replaces ETA-13/0928 issued on 27/06/2013

Deutsches Institut für Bautechnik **DIBt**

Allgemeine bauaufsichtliche Zulassung

Zulassungstitel für Bauprodukte und Bauarten
Bautechnisches Prüfamt
Esra vom Stand Land am Landem
gemeinsam genehmigte Anstalt des öffentlichen Rechts
Mitglied der EOTA, der UBA und der VdTÜV

Datum: 23.01.2015 **Dachflächen:** II 19-1.33.84-1573/1

Zulassungsummer: Z-33.84-1573 **Geltungsdauer**
vom: 23. Januar 2015 bis: 26. Juni 2018

Antragsteller:
BOLIX S.A.
ul. Stolarska 8
34-300 ZYWIEC
POLEN

Zulassunggegenstand:
Wärmedämm-Verbundsystem "Soltherm P" nach ETA-13/0928 vom 27. Juni 2013

Der oben genannte Zulassunggegenstand wird hiermit allgemein bauaufsichtlich zugelassen.
Diese allgemeine bauaufsichtliche Zulassung umfasst acht Seiten und acht Blatt Anlagen.

DIBt

DIBt | Wolkonskastraße 31 | D-10339 Berlin | Tel.: +49 30 13730-0 | Fax: +49 30 18790-200 | E-Mail: dibt@dib.tu-berlin.de | www.dibt.de

NSAI **IRISH AGREEMENT BOARD**
CERTIFICATE NO. 12/0371
Solix External Insulation System
22 Lisle View,
Dulwich,
Co. Tipperary
Tel: +353 (0)1 448 777
www.nsa.ie
E: info@nsa.ie

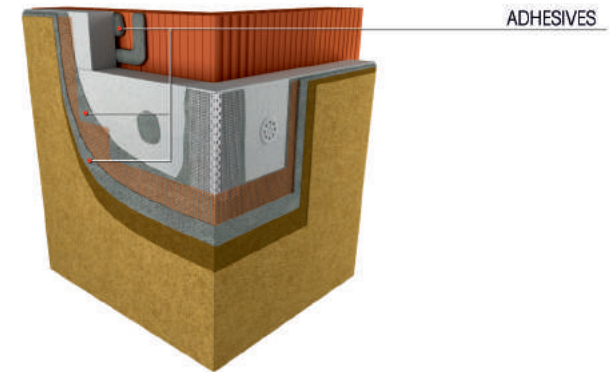
Solix
External Thermal Insulation Composite Systems
Système d'isolation pour murs extérieurs
Wärmedämmung für Außenwand

NSAI Agrément (Irish Agrément Board) is designated by Government to issue European Technical Approvals. NSAI Agrément Certificates establish proof that the certified products are "proper materials" suitable for their intended use under Irish site conditions, and in accordance with the Building Regulations 1997 to 2011.

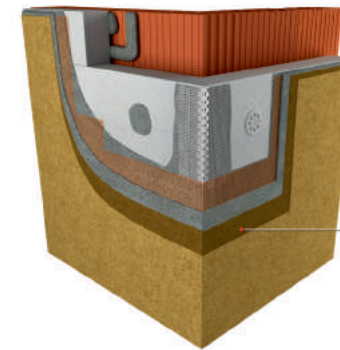
PRODUCT DESCRIPTION:
This Certificate relates to the Solix S and W Systems. The systems comprise of:
• Surface preparation of masonry or concrete substrates
• Full system beads and render only beads
• Insulation boards
• S System: Expanded Polystyrene and Graphite Enhanced Polystyrene
• W System: Mineral Wool
• Cementitious base coat with reinforcement
• Decorative finish (acrylic, mineral, silicone, silicone/acrylic, or silicate)
• Mechanical fixings
• Adhesive fixings
• Weather tight joints
• Movement joints
• Provision for limiting cold bridging at external wall/door junctions in compliance with Acceptable Construction Details published by the DCLG
• Provision for fire stopping at external compartment walls and floors.

Bolix S.A. is responsible for the design, manufacture and supply of all components to approved specifications.
Bolix S.A. has appointed Solix External Insulation as their sole distribution partner in Ireland.
The system is designed by Solix External Insulation on a project specific basis in accordance with an approved design process.
The installation of the system is carried out by installers who have been trained by Solix External Insulation and are approved by Solix External Insulation and NSAI Agrément to install the system. Applicants must adhere to strict installation guidelines as specified by Solix External Insulation.
This Certificate certifies compliance with the requirements of the Building Regulations 1997 to 2011.

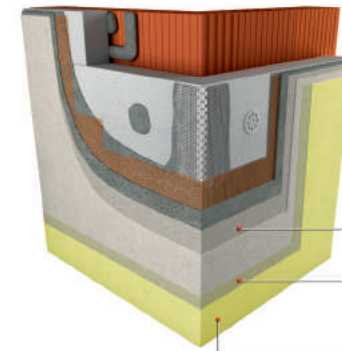
Readers are advised to check that this Certificate has not been withdrawn or superseded by a later issue by contacting NSAI Agrément, NSAI, Senvoy, Dublin 9 or online at <http://www.nsa.ie/modules/certificate/subloads/pdf/16313031.pdf>



ADHESIVES	SOLTHERM SA	SOLTHERM UB	SOLTHERM WB suitable for application in low temperatures	SOLTHERM BC-P suitable for application in low temperatures with microfibres
To install EPS boards	YES	YES	YES	YES
Base coat	NO	YES	YES	YES
Adhesion to concrete	> 0,3 MPa	> 0,6 MPa	> 0,6MPa	> 0,6 MPa
Adhesion to insulation board (failure in the polystyrene)	> 0,1 MPa	> 0,1 MPa	> 0,1 MPa	> 0,1 MPa
Slump	< 0,12 mm	< 0,12 mm	< 0,12 mm	< 0,12 mm
Estimated coverage	approx. 4kg/m ²		to install EPS boards approx. 4,0 kg/m ² to apply as base coat approx. 4,0 kg/m ²	
Mixing proportions	4,8-5,3 l of water per 25 kg of mortar	4.5-5.0 l of water per 25 kg of mortar	5,25-5,75 l of water per 25 kg of mortar	5,25-5,75 l of water per 25 kg of mortar
Open time	approx. 1,0 h	approx. 1,5 h	approx. 1,5 h	approx. 1,5 h
Colour	grey	grey/white	grey	white
Packaging	25 kg	25 kg	25 kg	25 kg
The number of products on the pallet	1200 kg	1200 kg	1200 kg	1200 kg



KEY COAT



KEY COAT

PRIMER

TOP COAT

KEY COATS/PRIMERS	SOLTHERM AP	SOLTHERM AP COLOUR	SOLTHERM STP	SOLTHERM STP COLOUR	SOLTHERM SNP	SOLTHERM SNP COLOUR
	Protects the primed surface against adverse effect of moisture. Facilitates paint and render application and regulates setting					
Use	Before applying acrylic, mineral render and waterborne paints based on acryl and vinyl polyacetate.	Before applying acrylic and mineral render	before applying silicate paints and silicate thin-coat render	before applying silicate thin-coat render	before applying silicone paints and silicone thin-coat render	before applying silicone thin-coat render
Drying time of one layer	4-6 h	4-6 h	24 h	24 h	4-6 h	4-6 h
Colour	milky	white or compliant with SOLTHERM Colour Palettes	milky	white or compliant with SOLTHERM Colour Palettes	milky	white or compliant with SOLTHERM Colour Palettes
The consumption at one coat application	0,10-0,15 kg/m ²	0,25-0,40 kg/m ²	0,10-0,20 kg/m ²	0,25-0,40 kg/m ²	0,10-0,20 kg/m ²	0,25-0,40 kg/m ²
Packaging	5,10,20 kg	5, 10, 25 kg	5, 20 kg	5, 25 kg	5, 20 kg	5, 25 kg
The number of products on the pallet	400 kg, 440 kg, 480 kg	400 kg, 440 kg, 600 kg	400 kg, 480 kg	400 kg, 600 kg	400 kg, 480 kg	400 kg, 600 kg

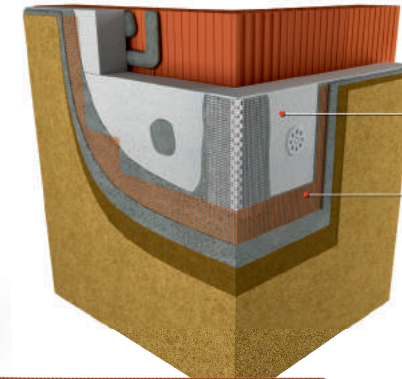


FINISHING COAT

FINISHING COATS	ACRYLIC RENDERS SOLTHERM AFC high resistance to the effects of atmospheric factors easy to clean high impact resistance	MINERAL RENDERS SOLTHERM MTC vapour permeable resistant to changing weather conditions	SILICATE RENDERS SOLTHERM STF increased resistance to biological contamination vapour permeable for renovation	SILICONE RENDERS SOLTHERM SFC-P increased resistance to biological contamination high flexibility vapour permeable
Render texture and thickness	grained 1 mm, 1,5 mm, 2 mm ribbed 1,5 mm, 2,5 mm	grained 1,5 mm, 2 mm, 3 mm ribbed 2,5 mm	grained 1 mm, 1,5 mm, 2 mm ribbed 2,5 mm	grained 1,5 mm, 2 mm ribbed 2,5 mm
Colours	compliant with SOLTHERM Colour Palettes	white/grey	compliant with SOLTHERM Colour Palettes	compliant with SOLTHERM Colour Palettes
Consumption	from ca 1,8 3,5 kg for 1 m ²	from ca 2,2 4,0 kg for 1 m ²	from ca 1,8 3,5 kg for 1 m ²	from ca 2,0 3,5 kg for 1 m ²
Packaging	30 kg	25 kg	30 kg	30 kg
The number of products on the pallet	720 kg	1200 kg	720 kg	720 kg



TOP COATS	ACRYLIC PAINT SOLTHERM ACP highly resistant to changing weather conditions	ACRYLIC PAINT SOLTHERM ACP ECO-SHIELD increased resistance to biological contamination	SILICATE PAINT SOLTHERM STPT bactericidal properties	SILICONE PAINT SOLTHERM STC-P increased resistance to biological contamination high UV resistance vapour permeable hydrophobic
Gloss	matt			
Resistance to wet scrubbing	>2000 brush strokes			
Complete curing	24 h			
Bulk density	approx. 1,45 kg/dm ³	approx. 1,45 kg/dm ³	approx. 1,50 kg/dm ³	approx. 1,45 kg/dm ³
Drying time of one layer	approx. 2 h	approx. 2 h	approx. 2 h	approx. 2 h
Colour	white or compliant with SOLTHERM Colour Palettes			
Consumption for one paint coat	on even and non-absorptive substrates 0,12÷0,18 l/m ² , on uneven substrate 0,18÷0,28 l/m ²	on even and non-absorptive substrates 0,12÷0,18 l/m ² , on uneven substrate 0,18÷0,28 l/m ²	on even and non-absorptive substrates 0,12÷0,20 l/m ² , on uneven substrate 0,20÷0,28 l/m ²	on even and non-absorptive substrates 0,12÷0,20 l/m ² , on uneven substrate 0,20÷0,28 l/m ²
Packaging	5, 10, 18 l	10, 18 l	5, 10, 18 l	5, 10, 18 l
The number of products on the pallet	400 l, 440 l, 432 l	440 l, 432 l	400 l, 440 l, 432 l	400 l, 440 l, 432 l



EXPANDED POLYSTYRENE

GLASS FIBRE MESH

GLASS FIBRE MESH	AKE 145	HD 158 / S	HD 174 / S
Weight [g/m ²]	145	158	174
Packaging	Roll 55 m	Roll 50 m	Roll 50 m
Length	55 m	50 m	50 m
Width	1,1 m	1 m	1 m
Mesh opening size	4,0 x 4,5	3,9 x 4,0 mm	3,8 x 3,2 mm ±5%

EPS BOARD	EPS BOARD FASADA 032 GRAPHITE	EPS BOARD FASADA 040 WHITE
Declared thermal conductivity coefficient [W/Mk]	$\lambda \leq 0,032$	$\lambda \leq 0,04$
Reaction to fire	E according to EN 13501	E according to EN 13501
Dimensions [mm]	1000 x 500	1000 x 500
Thickness [mm]	10-250	10-250

EXTERNAL THERMAL INSULATION COMPOSITE SYSTEMS/ MINERAL WOOL/

European Technical Assessment
SOLTHERM W
 ETA-13/0933 of 03/09/2014
 Valid to: indefinite



NSAI
 Irish Agreement Board Certificate
 No 12/0371



Instytut Techniki Budowlanej
 PL 00-611 WARSZAWA
 ul. Filiova 1
 tel: (+48 22) 825-04 71
 (+48 22) 825-76 55
 fax: (+48 22) 825-52 85
www.itb.pl

Member of
ETA
 European Organisation for
 Technical Assessment

Member of
ETA
 European Organisation for
 Technical Assessment

European Technical Assessment **ETA-13/0933**
of 03/09/2014

General Part	
Technical Assessment Body issuing the European Technical Assessment	Instytut Techniki Budowlanej
Trade name of the construction product	SOLTHERM W
Product family to which the construction product belongs	External Thermal Insulation Composite System with rendering (ETICS)
Manufacturer	BOLIX S.A. ul. Stolarska 8 PL 34-300 Żywiec, Poland
Manufacturing plant	BOLIX S.A. ul. Stolarska 8 PL 34-300 Żywiec, Poland
This European Technical Assessment contains	14 pages including 2 Annexes which form an integral part of this Assessment
This European Technical Assessment is issued in accordance with Regulation (EU) No 305/2011, on the basis of	Guideline for European Technical Approval ETAG 004, Edition 2013 "External Thermal Insulation Composite Systems with rendering", used as European Assessment Document (EAD)
This version replaces	ETA-13/0933 issued on 27/08/2013

IRISH AGREEMENT BOARD
 CERTIFICATE NO. 12/0371
 SOLIX External Insulation System
 22 Linnis Venn,
 Dublin,
 Co. Tipperary
 T: +353 (0)1 248 777
 W: www.nsaib.ie
 E: info@nsaib.ie

Solix
External Thermal Insulation Composite Systems
 Système d'isolation pour murs extérieurs
 Wärmedämmung für Außenwand

PRODUCT DESCRIPTION:
 This Certificate relates to the Solix S and W Systems. The systems comprise of:

- Surface preparation of masonry or concrete substrates
- Full system beads and render only beads
- Insulation boards
 - S System: Expanded Polystyrene and Graphite Enhanced Polystyrene
 - W System: Mineral Wool
- Cementitious base coat with reinforcement
- Decorative finish (acrylic, mineral, silicone, silicoacrylic, or silicate)
- Mechanical fixings
- Adhesive fixings
- Weather tight joints
- Movement joints
- Provision for limiting cold bridging at external wall/door junctions in compliance with Acceptable Construction Details published by the DECLG.
- Provision for fire stopping at external compartment walls and floors.

Readers are advised to check that this Certificate has not been withdrawn or superseded by a later issue by contacting NSAI Agrément, NSAI, Searcy, Dublin 9 or online at <http://www.nsaib.ie/modules/quickContact/subindex.php?ID=130371.pdf>

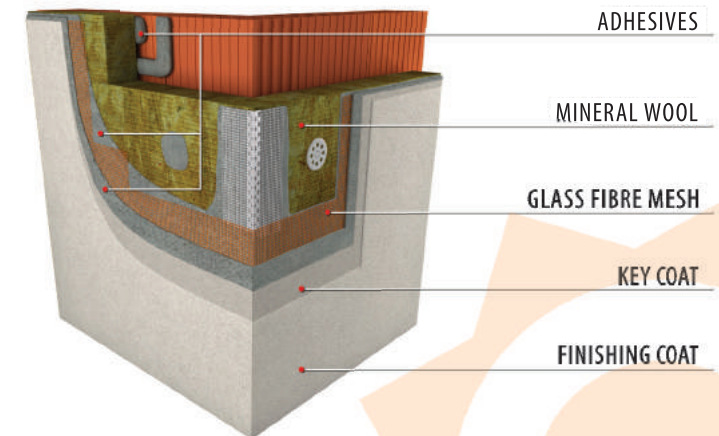
Bolix S.A. is responsible for the design, manufacture and supply of all components to approved specifications.

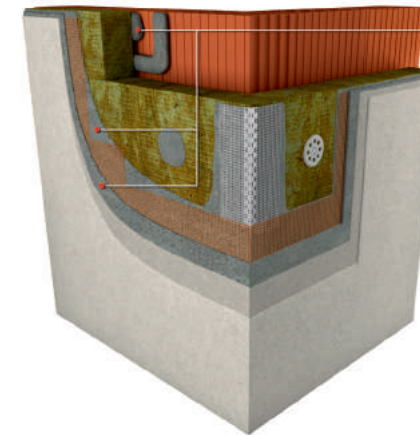
Bolix S.A. has appointed Solix External Insulation as their sole distribution partner in Ireland.

This system is designed by Solix External Insulation on a project specific basis in accordance with an approved design process.

The installation of the system is carried out by installers who have been trained by Solix External Insulation and are approved by Solix External Insulation and NSAI Agrément to install the system. Applicators must adhere to strict installation guidelines as specified by Solix External Insulation.

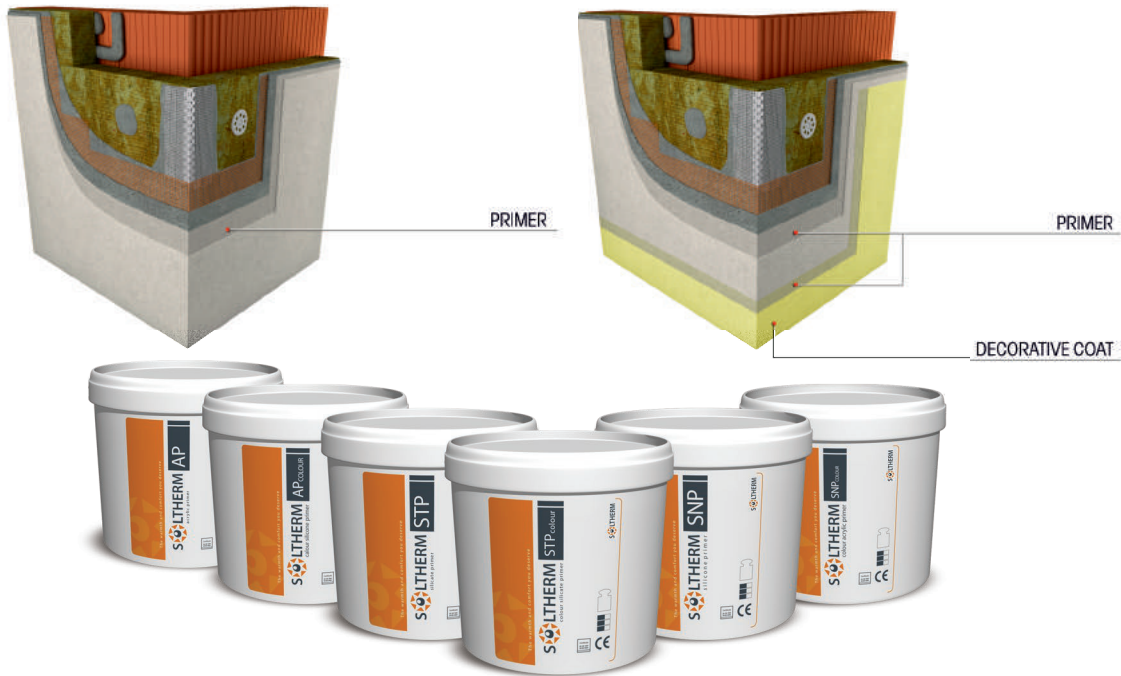
This Certificate certifies compliance with the requirements of the Building Regulations 1997 to 2011.



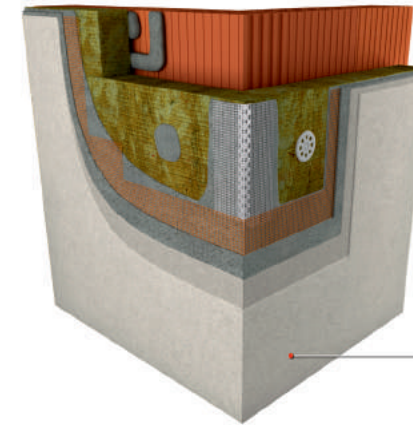


ADHESIVES

ADHESIVES	SOLTHERM MA	SOLTHERM MB
To install mineral wool boards	YES	YES
Base coat	NO	YES
Adhesion to concrete	≥ 0,3 MPa	> 0,6 MPa
Adhesion to facade mineral wool	≥ 0,015 MPa	≥ 0,015 MPa
Mixing proportions	4,8-5,3 l of water per 25 kg of the adhesive	5,0-5,5 l of water per 25 kg of the adhesive
Open time	approx. 1,0 h	approx. 1,5 h
Colour	grey	grey
Consumption	in case of attaching facade mineral wool boards with fibres oriented in parallel (laminar): approx, 4,0 kg/m ² in case of attaching lamella mineral wool boards: approx, 5,0 kg/m ²	fixing mineral wool boards with irregularly oriented fibres, parallel to the surface of the board (laminar): approx, 4,0 kg/m ² fixing mineral wool boards with fibres oriented perpendicular to the surface of the board (lamella wool): approx, 5,0 kg/m ² to apply fibre reinforced base coat approx, 5kg/m ²
Packaging	25 kg	25 kg
The number of products on the pallet	1200 kg	1200 kg

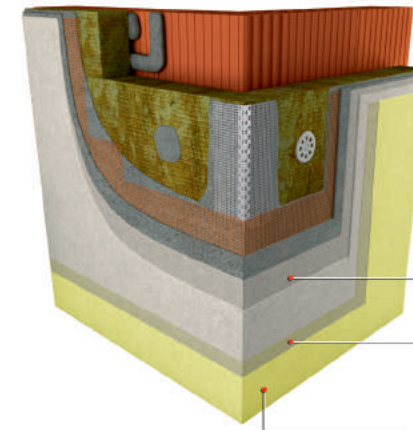


KEY COATS/ PRIMERS	SOLTHERM AP	SOLTHERM AP COLOUR	SOLTHERM STP	SOLTHERM STP COLOUR	SOLTHERM SNP	SOLTHERM SNP COLOUR
	Protects the primed surface against adverse effect of moisture. Facilitates paint and render application and regulates setting					
Use	Before applying acrylic, mineral render and waterborne paints based on acryl and vinyl polyacetate.	Before applying acrylic and mineral render	Before applying silicate paints and silicate thin-coat render	Before applying silicate thin-coat render	Before applying silicone paints and silicone thin-coat render	Before applying silicone thin-coat render
Drying time of one layer	4-6 h	4-6 h	24 h	24 h	4-6 h	4-6 h
Colour	milky	white or compliant with SOLTHERM Colour Palettes	milky	white or compliant with SOLTHERM Colour Palettes	milky	white or compliant with SOLTHERM Colour Palettes
The consumption at one coat application	0,10-0,15kg/m ²	0,25-0,40kg/m ²	0,10-0,20kg/m ²	0,25-0,40kg/m ²	0,10-0,20kg/m ²	0,25-0,40kg/m ²
Packaging	5,10,20 kg	5,10,25 kg	5,20 kg	5, 25 kg	5,20 kg	5, 25 kg
The number of products on the pallet	400 kg, 440 kg, 480 kg	400 kg, 440 kg, 600 kg	400 kg, 480 kg	400 kg, 600 kg	400 kg, 480 kg	400 kg, 600 kg



FINISHING COAT

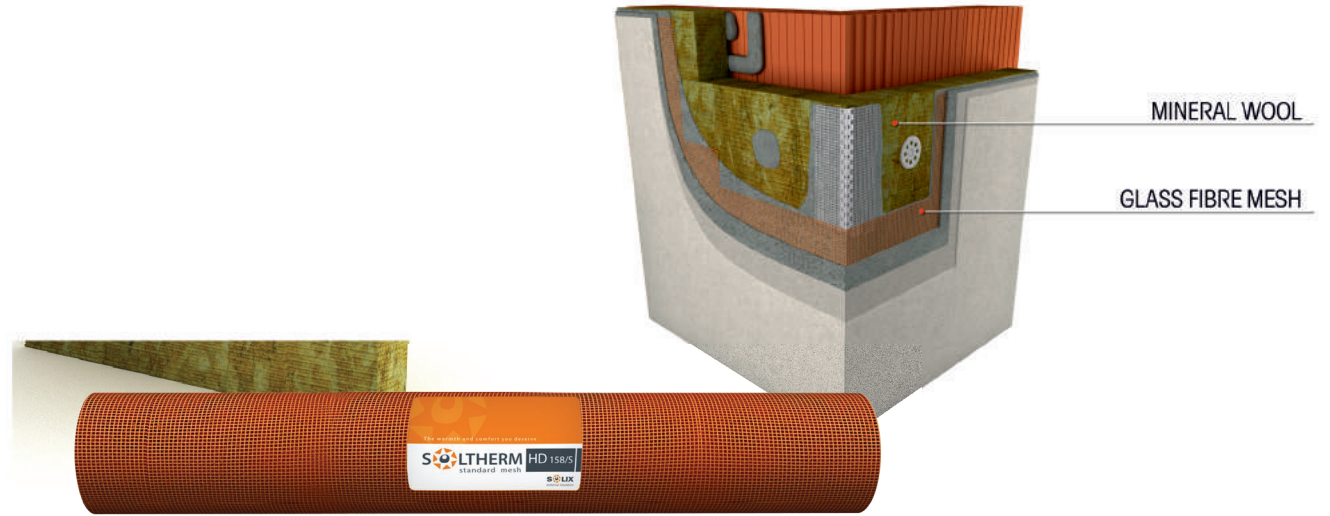
FINISHING COATS	MINERAL RENDERS SOLTHERM MTC vapour permeability high resistance to the effect of atmospheric factors	SILICATE RENDERS SOLTHERM STF increased resistance to biological contamination vapour permeability for renovations	SILICONE RENDERS SOLTHERM SFC-P increased resistance to biological contamination high flexibility vapour permeable
Render texture and thickness	grained 1,5 mm, 2 mm, 3 mm ribbed 2,5 mm	grained 1 mm, 1,5 mm, 2 mm ribbed 2,5 mm	grained 1,5 mm, 2 mm ribbed 2,5 mm
Colours	white/grey	compliant with SOLTHERM Colour Palettes	compliant with SOLTHERM Colour Palettes
Consumption	from ca 2,2 4,0 kg for 1 m ²	from ca 1,8 3,5 kg for 1 m ²	from ca 2,0 3,5 kg for 1 m ²
Packaging	25 kg	30 kg	30 kg
The number of products on the pallet	1200 kg	720 kg	720 kg



KEY COAT

TOP COAT

TOP COATS	SILICATE PAINT SOLTHERM STPT bactericidal propertis -for renovation of old and historic buildings	SILICONE PAINT SOLTHERM STC-P increased resistance to biological contamination high UV resistance vapour permeable hydrophobic
Gloss	matt	
Resistance to wet scrubbing	>2000 brush strokes	
Complete curing	24 h	
Bulk density	approx. 1,50 kg/dm ³	approx. 1,45 kg/dm ³
Drying time of one layer	approx. 2 h	approx. 4 h
Colour	white or compliant with SOLTHERM Colour Palettes	
Consumption for one paint layer	on even and non-absorptive substrates 0,12÷0,20 l/m ² , on uneven substrate 0,20÷0,28 l/m ²	
Packaging	5, 10, 18 l	5, 10, 18 l
The number of products on the pallet	400 l, 440 l, 432 l	440 l, 432 l



GLASS FIBRE MESH	AKE 145	HD 158 / S	HD 174 / S
Weight [g/m ²]	145	158	174
Packaging	Roll 55 m	Roll 50 m	Roll 50 m
Lenght	55 m	50 m	50 m
Width	1,1 m	1 m	1 m
Mesh opening size	4,0 x 4,5	3,9 x 4,0	3,8 x 3,2 mm ±5%

MINERAL WOOL	MINERAL WOOL PAROC LINIO 10	MINERAL WOOL PAROC LINIO 15
Declared thermal conductivity coefficient [W/mk]	$\lambda \leq 0,036$	$\lambda \leq 0,037$
Reaction to fire	A1 according to EN 13501	A1 according to EN 13501
Dimensions [mm]	1200 x 600	1200 x 600
Thickness [mm]	20-120	20-120