

NORTHERN OFFICE
Solinear Limited

Oaktree House
Alan Farnaby Way
Sheriff Hutton Industrial Park
Sheriff Hutton. York. YO60 6PG

email: mail@solinear.co.uk

Telephone: 01347 879046 **Fax:** 01347 878038

SOUTHERN OFFICE

Solinear Limited,
40 Melton Road, Oakham,
Leicestershire. LE15 6AY

Telephone: 01572 720449



Solinear

Solar Shading & Architectural Louvres

'The Art of Cool'

MEDERA™ Timber Solar Shading
and Architectural Louvre Systems

Welcome to the Solinear Timber Brochure, showcasing some of our recent timber projects. We strive to guarantee that you will be delighted with our products & services, and return to Solinear again and again.



Medera™ Steiner Academy (above)

Timber Structures

Medera™ Louvres and Movil Panel Systems

Western red cedar was specified for this Medera™ Louvre project, Steiner academy consisted of mixed static and sliding panels Each sliding panel has a Madera™ running gear fixing pack and will roll on channel tracks at the top with a guiding rail at the bottom to allow sliding of each panel.

You can view or download the CAD files and data sheets associated with this project at our website www.solinear.co.uk



“We offer a complete service for the intelligent environmental management of building structures of all kinds. Our confidence in our manufacturing facilities are backed up by comprehensive contracting services that ensure you receive complete system & project integrity.”

Project Management:

All projects are supervised and managed by fully qualified and experienced project managers, guaranteed by us to be responsible for the efficient and successful implementation of the installed system.

Project Design:

We strive to remain at the cutting edge of advanced project design using state-of-the-art AutoCAD systems allowing Solinear to validate and demonstrate our proposals while ensuring that site interface problems with the building construction are avoided.

Advanced Analysis:

Using modern computer software, we are able to calculate how the shadows from our louvres and shading will fall on your building, depending on its position on the Earth and the time of year.

Structural Design:

All proposals can be supported by summary design calculations in accordance with current British Standards, Regulations and Codes of Practice and our in-house guarantees of conduct.

Installation:

To ensure your complete confidence in our projects we employ fully trained CITB registered installation engineers for each project installed by us. All engineering possesses relevant CSCS documentation and MEWPS certification.

“We offer a complete service for the intelligent environmental management of building structures of all kinds. Our confidence in our manufacturing facilities are abacked up by our offer of free autoCAD 2D and 3D design services and supply of template NBS Specifications for your project planning”

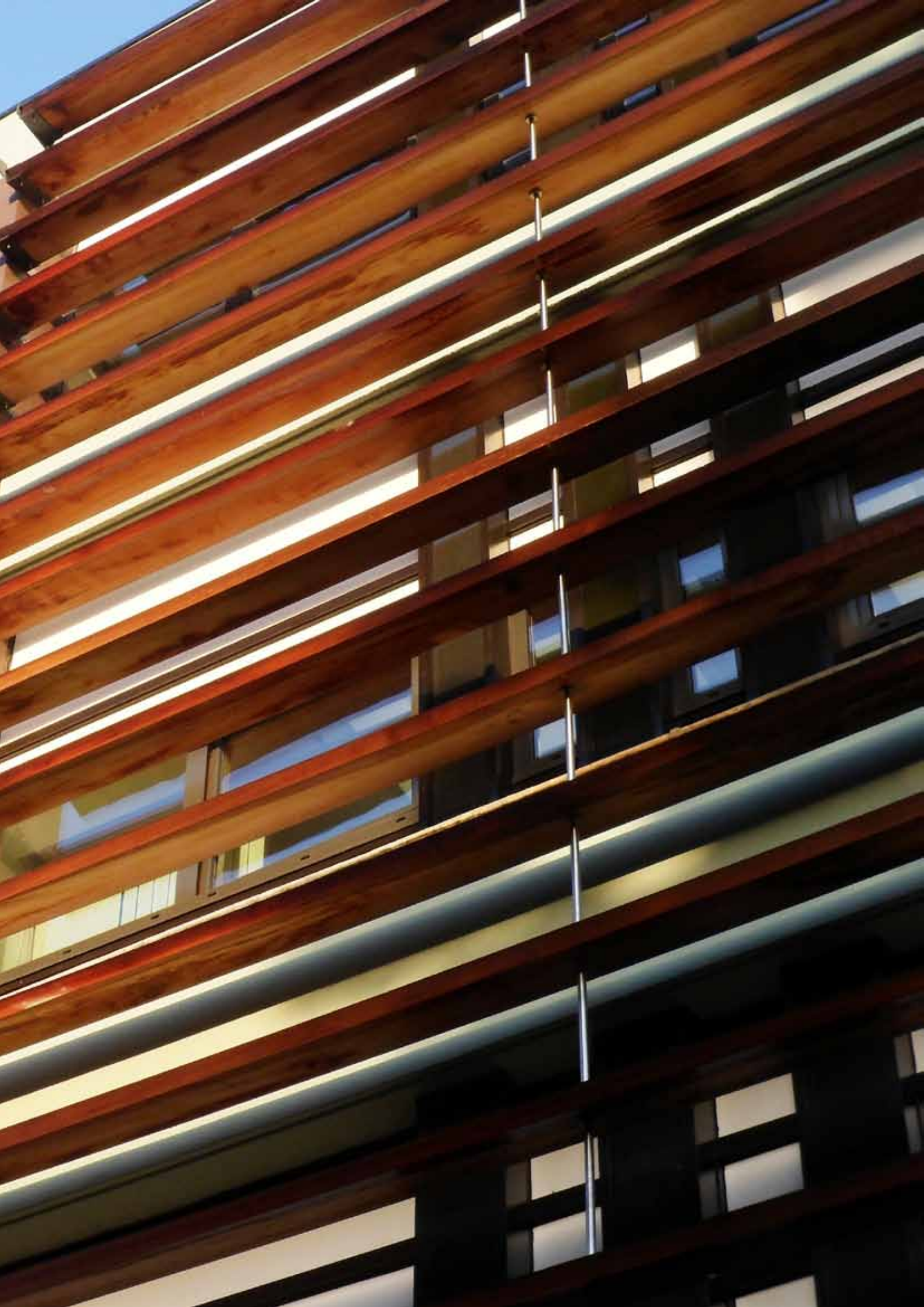


Medera™

Timber Structures

Medera™ Timber Louves and Solar Shading





Timber Solar Shading - East Road Hackney



Medera™ 200mm Horizontal Solar Shading

Our MADERA™ 200 external solar shading system was supplied with rectangular profile louvre blades manufactured from Western red cedar timber set between 150 x 10mm thick profile cut extruded aluminium end plates. Louvre blades set to 271mm vertical pitch.

This horizontal timber facade system comprised of 6 bays at 3500mm x 7580mm high and 1 bay of 2750mm x 7580mm high, each bay 28 Blades high. 32 fixing brackets were supplied, suitable for fixing back to concrete building structure and secured using resin anchors to required capacity and embedment.

For more information please you can go to our website for all relevant files and data sheets relating to this project at www.solinear.co.uk

Solex™ Aluminium Solar Shading

Our Solex™ HALO-200 extruded aluminium external solar shading system was supplied and installed comprising 4 no off elliptical blade profiles fixed between 6mm thick profile cut rafter arms projecting 1020mm horizontally from building structure as a cantilever arrangement.

All aluminium components are standard, non-metallic, PPC finish to RAL colour range. All fasteners were supplied, unpainted, self colour stainless steel.

For more information on our Aluminium Solex™ Solar shading please visit our website.





Medera™

Timber Structures

University of Bradford - Medera™ Solar Shading



Solex Medera™ - R - 275 X 69 Rectangular Profile

External Horizontal Brise soleil system consisting of rectangular profile fin sets 20 Blades vertically, 6 bays across. Each bay of timber fins are supported to columns via Medera™ 'Cats-ears' endplates, featuring our Medera™ drop rod system, positioned at the mid-point of the timber fin for extra support on such a large span.

All Timber fins are manufactured from air dried, western red cedar wood CSA / PEFC certified. All aluminium components are polyester powder coated to the clients RAL specification.

You can view or download the CAD files and data sheets associated with this project at our website.



www.solinear.co.uk



Medera™ Timber Louves and Solar Shading



Medera™ Timber Louves and Solar Shading



Ellesmere Park Sports Village







Medera™



Timber Structures

Medera™ Timber Louves and Solar Shading



Solex Medera™ - Timber Louvre and Solar Shading Systems

Timber louvre blades and shading fin profiles are manufactured from a variety of wood species. More common woods used are Western Red Cedar, European Oak, Accoya, Larch, Red Meranti, Douglas Fir and Thermowood. All timber used within our constructions are fully traceable, with proven full chain of custody and CSA / PEFC certified. When used in conjunction with aluminium these components are polyester powder coated to the clients RAL colour specification.

Decorative wood stains, either opaque or translucent, with top coat finishes can also be supplied to the woods used within the louvre or shading blade profile. Further technical details on available finishes, application and guarantees can be found on our website.

Solinear offer a full Design Service to assist in the selection of timber and how it is incorporated within the support device requirements for any given project.



www.solinear.co.uk





'The Art of Cool'

"WE **PRIDE OURSELVES** ON THE
PLANNING, DESIGN, QUALITY & FINISH
OF **OUR PRODUCTS**.

WE WANT OUR PRODUCTS TO LOOK JUST
AS **GOOD ON YOUR BUILDINGS**.

THAT IS WHY WE WILL ALWAYS GO
THAT EXTRA MILE ON YOUR PROJECTS,
TO ENSURE OUR WORK ALWAYS COMES
UP TO THE **HIGH STANDARDS** WE SET
FOR OURSELVES"



www.solinear.co.uk