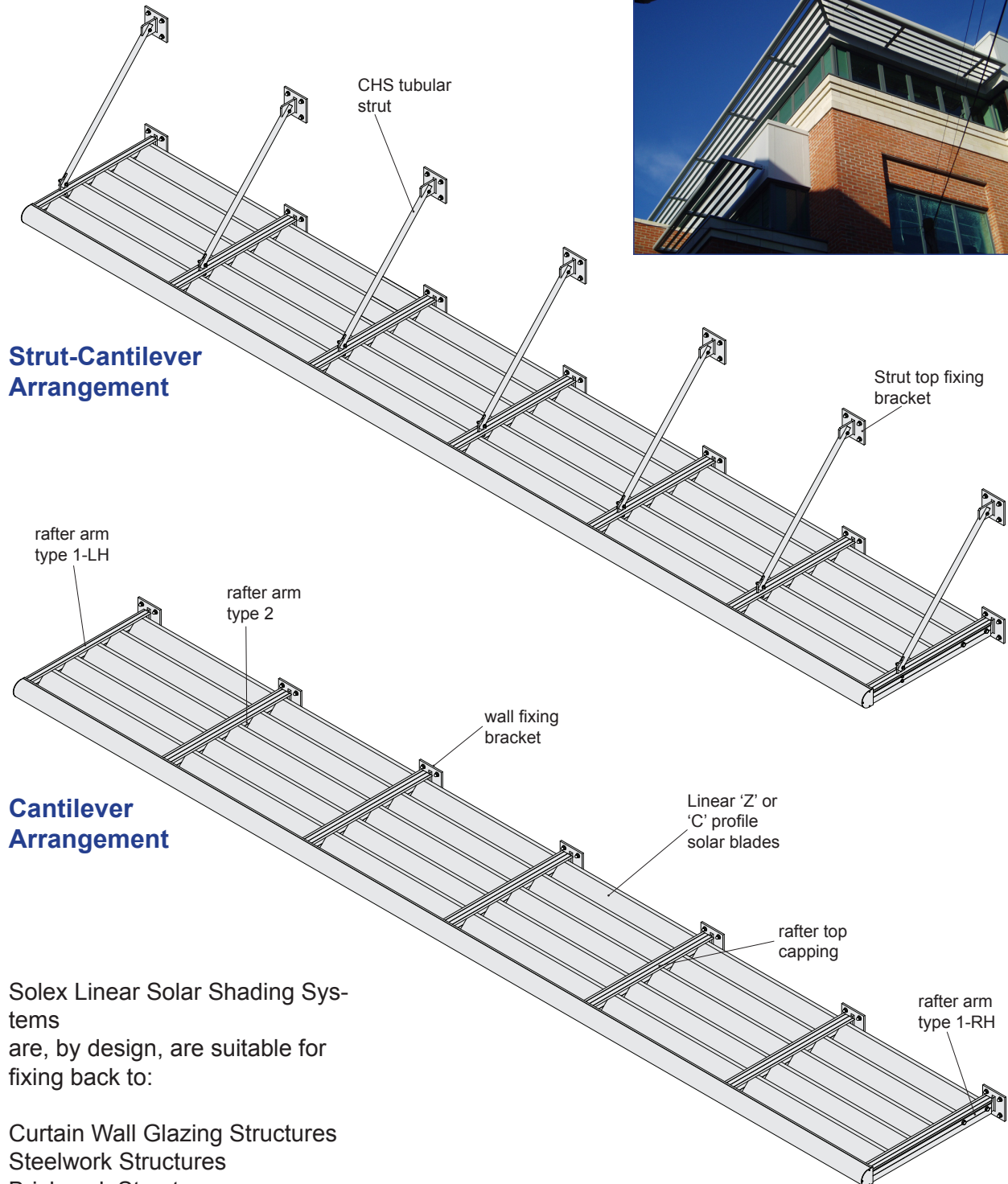
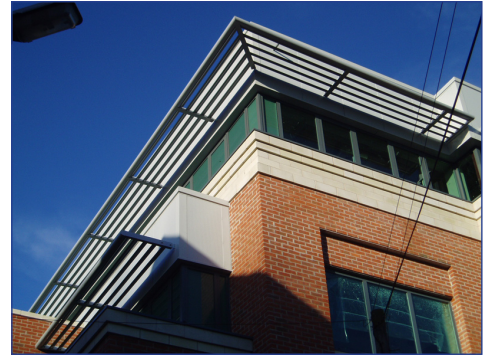


Linear Solar Shading System Overview

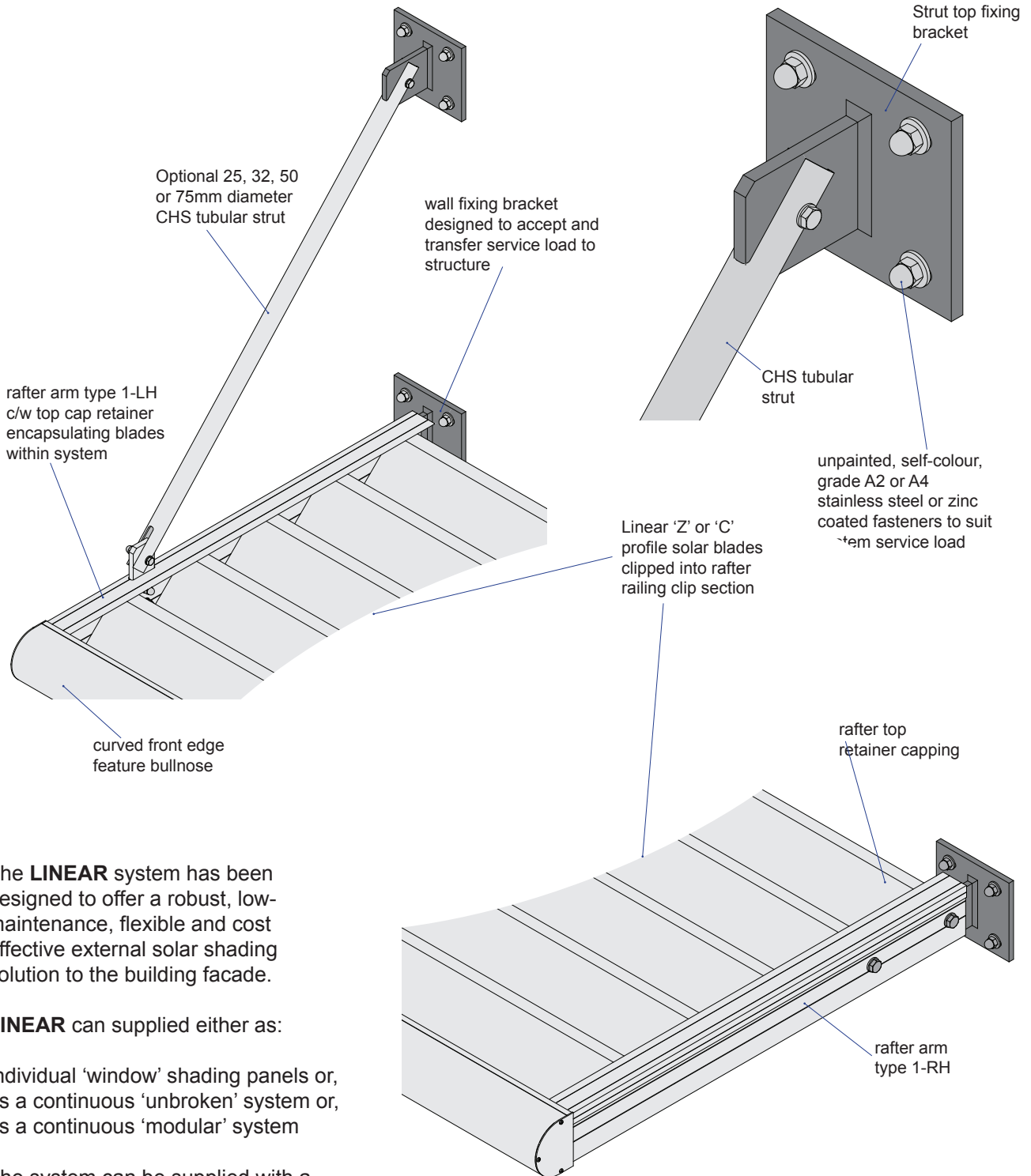


Solex Linear Solar Shading Systems are, by design, suitable for fixing back to:

- Curtain Wall Glazing Structures
- Steelwork Structures
- Brickwork Structures

Linear Solar Shading

External Solar Shading System



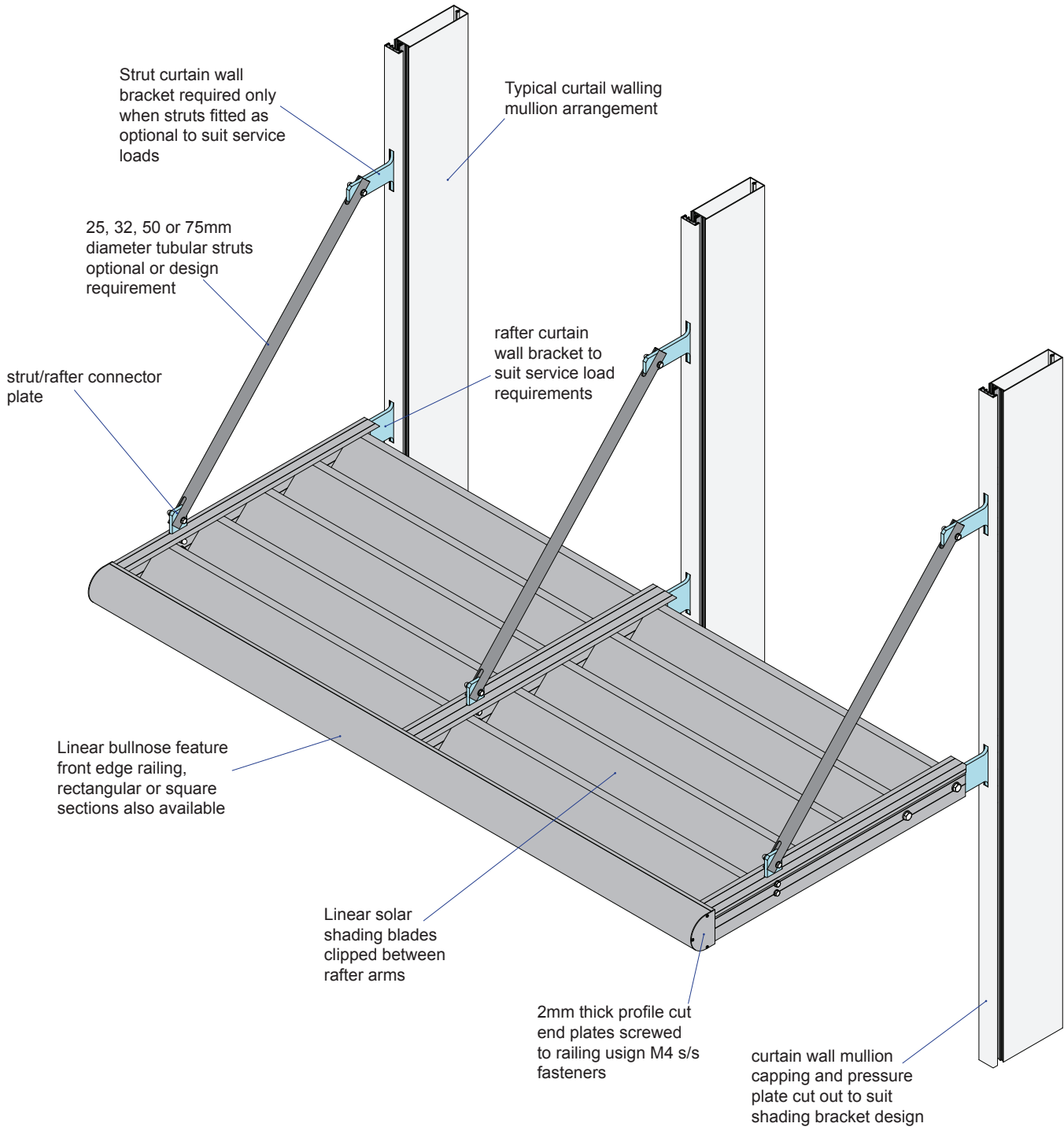
The **LINEAR** system has been designed to offer a robust, low-maintenance, flexible and cost effective external solar shading solution to the building facade.

LINEAR can be supplied either as:

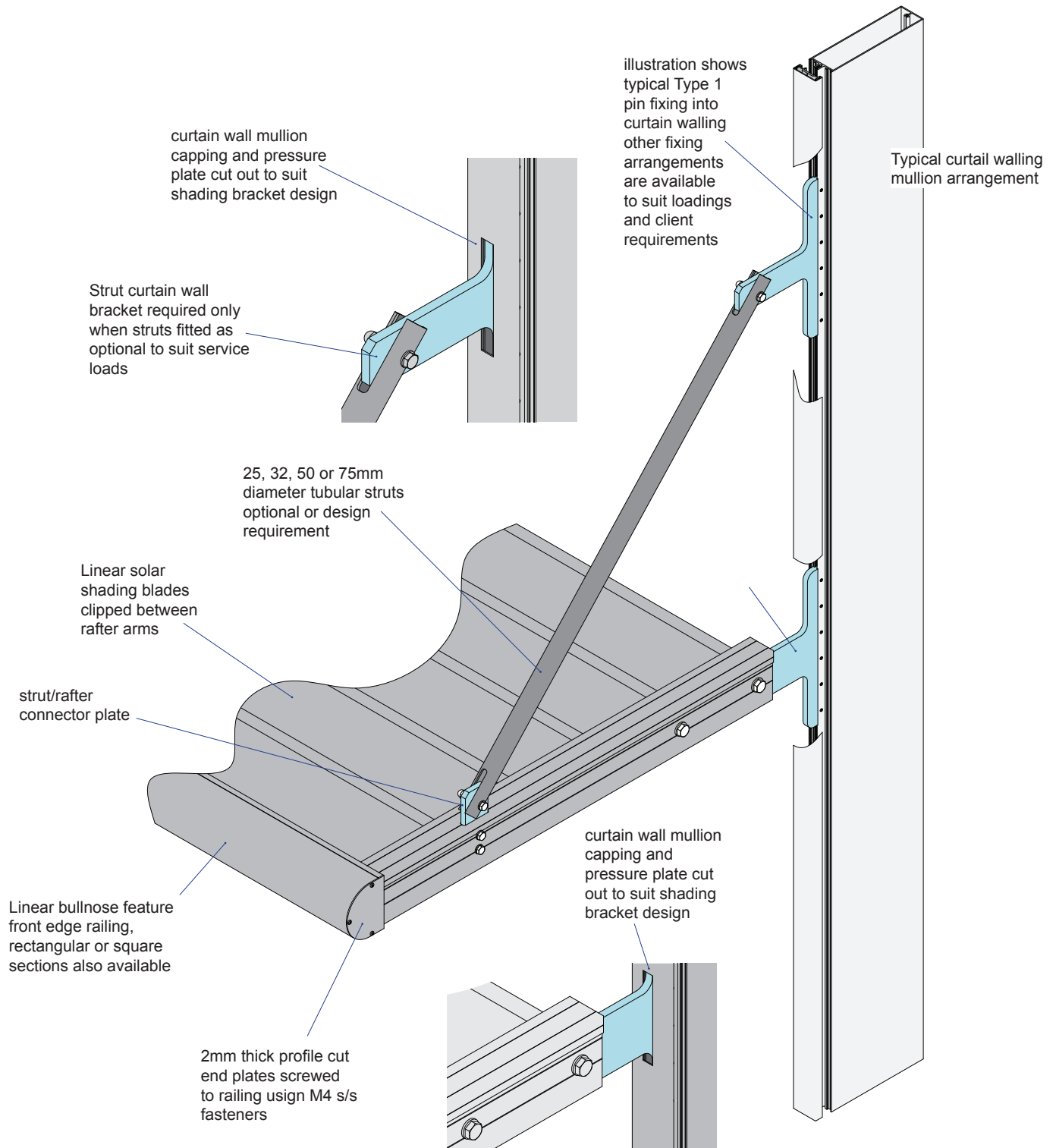
Individual 'window' shading panels or, as a continuous 'unbroken' system or, as a continuous 'modular' system

The system can be supplied with a polyester powder or an anodised finish

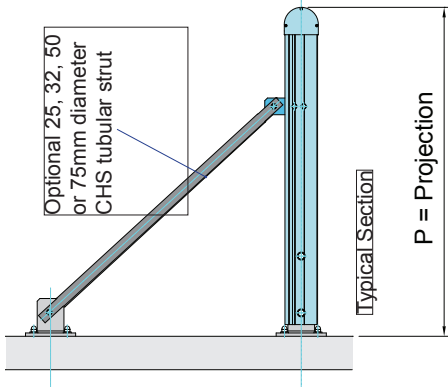
Linear Solar Shading Typical Details into Glazing



Linear Solar Shading Typical Details Into Glazing



Linear Solar Shading Typical Details



Standard **LINEAR** System Horizontal Projections:

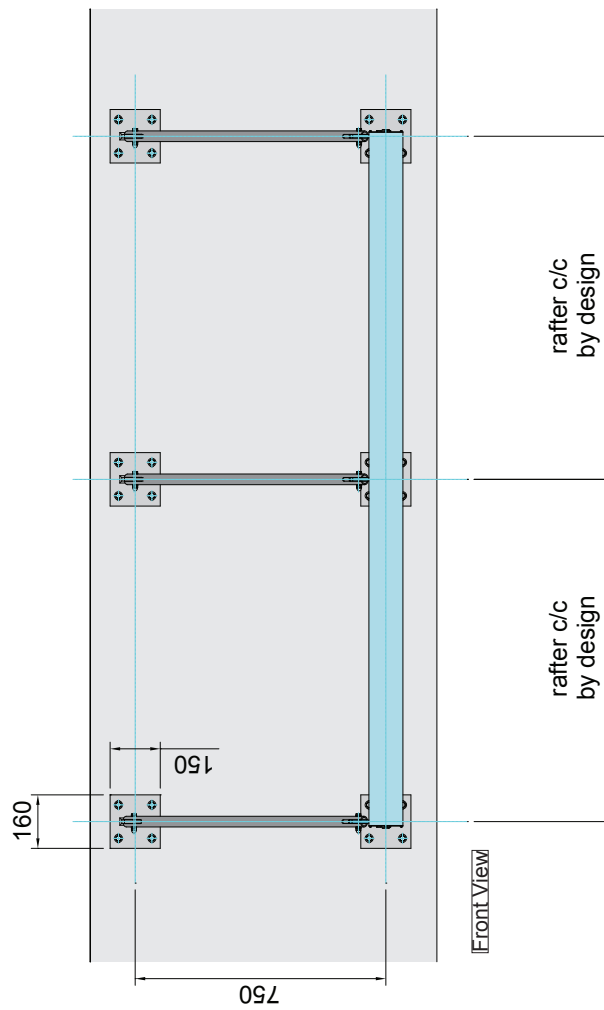
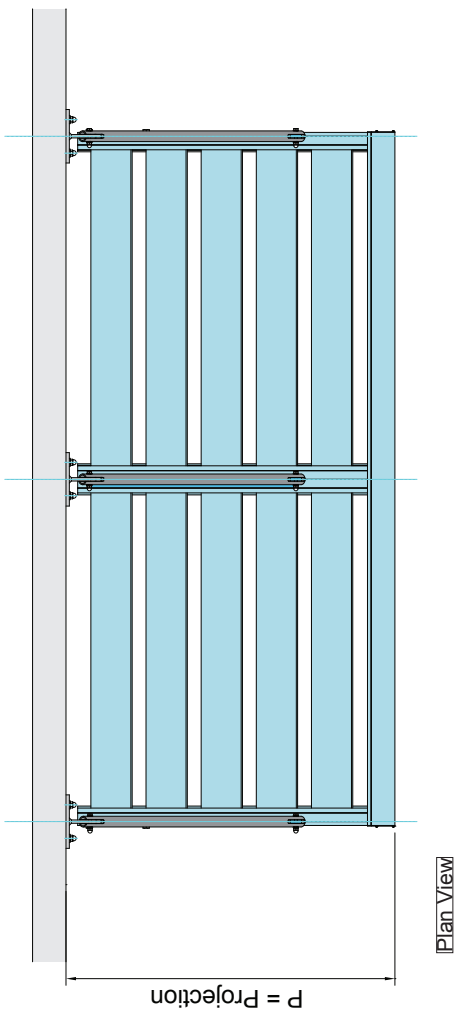
Solex Linear-01 - P = nom 825mm - 4 shading blades

Solex Linear-02 - P = nom 985mm - 5 shading blades

Solex Linear-03 - P = nom 1150mm - 6 shading blades

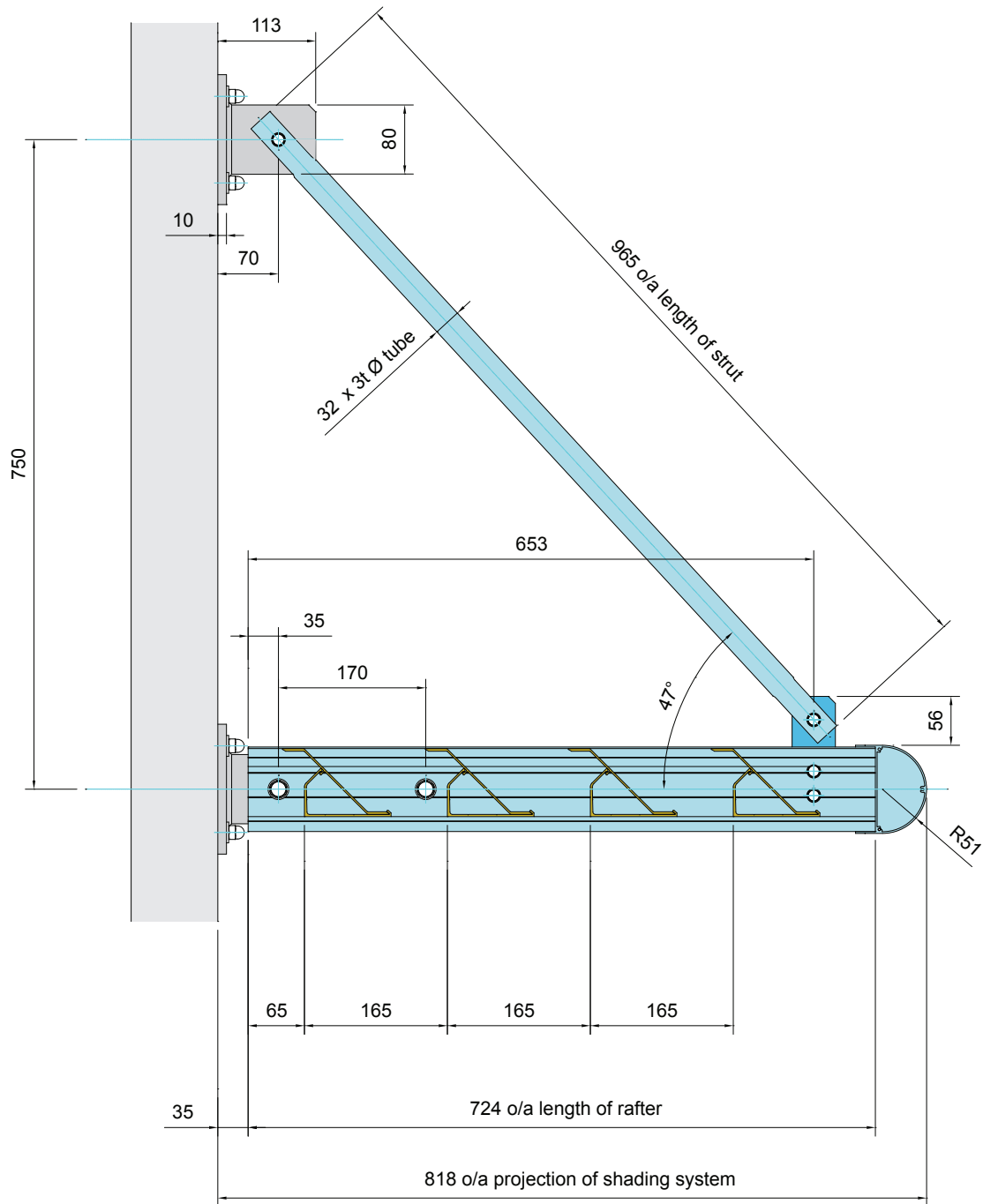
Solex Linear-04 - P = nom 1325mm - 7 shading blades

Solex Linear-05 - P = nom 1500mm - 8 shading blades



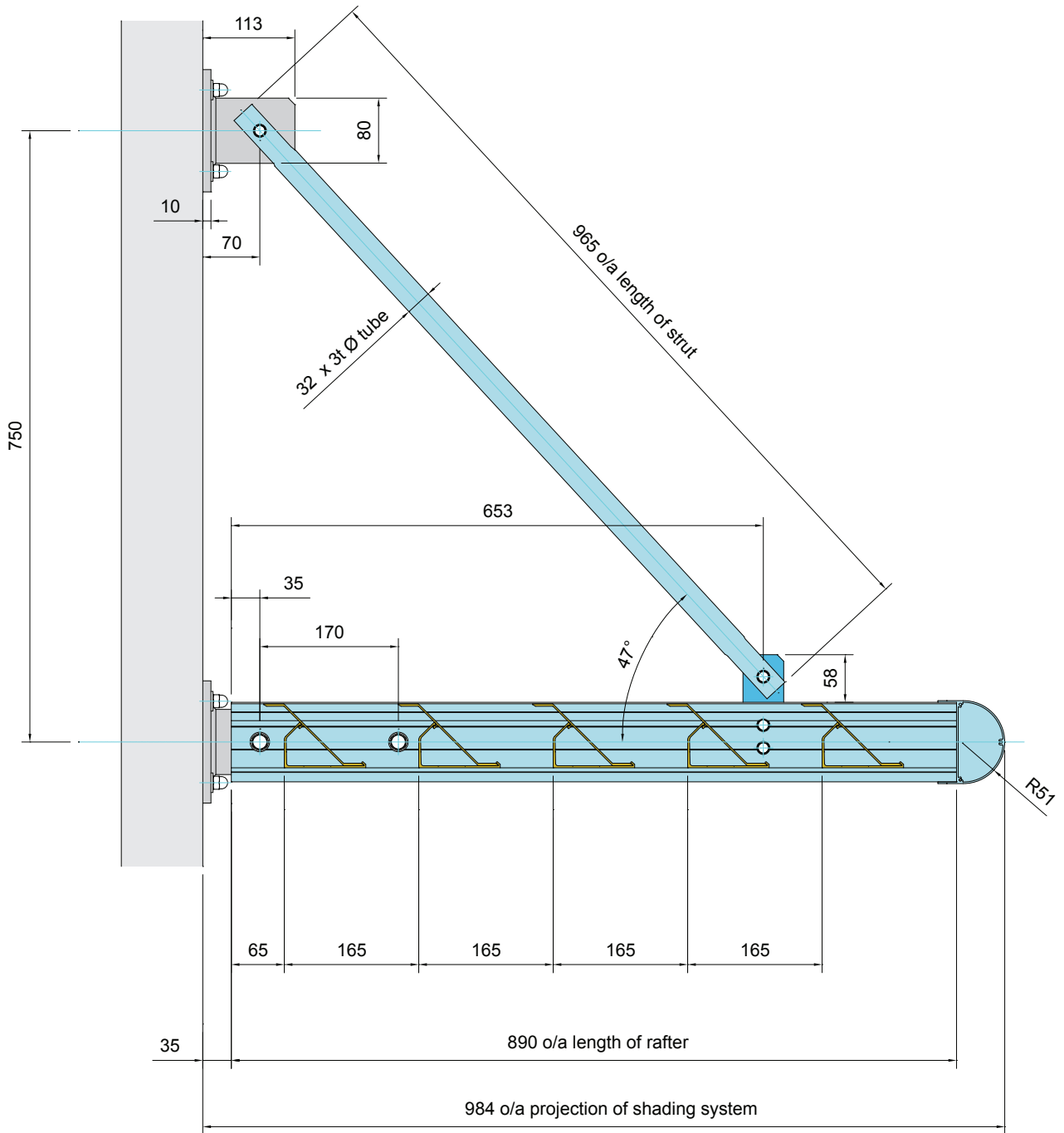
Linear Solar Shading

Typical Section c/w Optional Strut



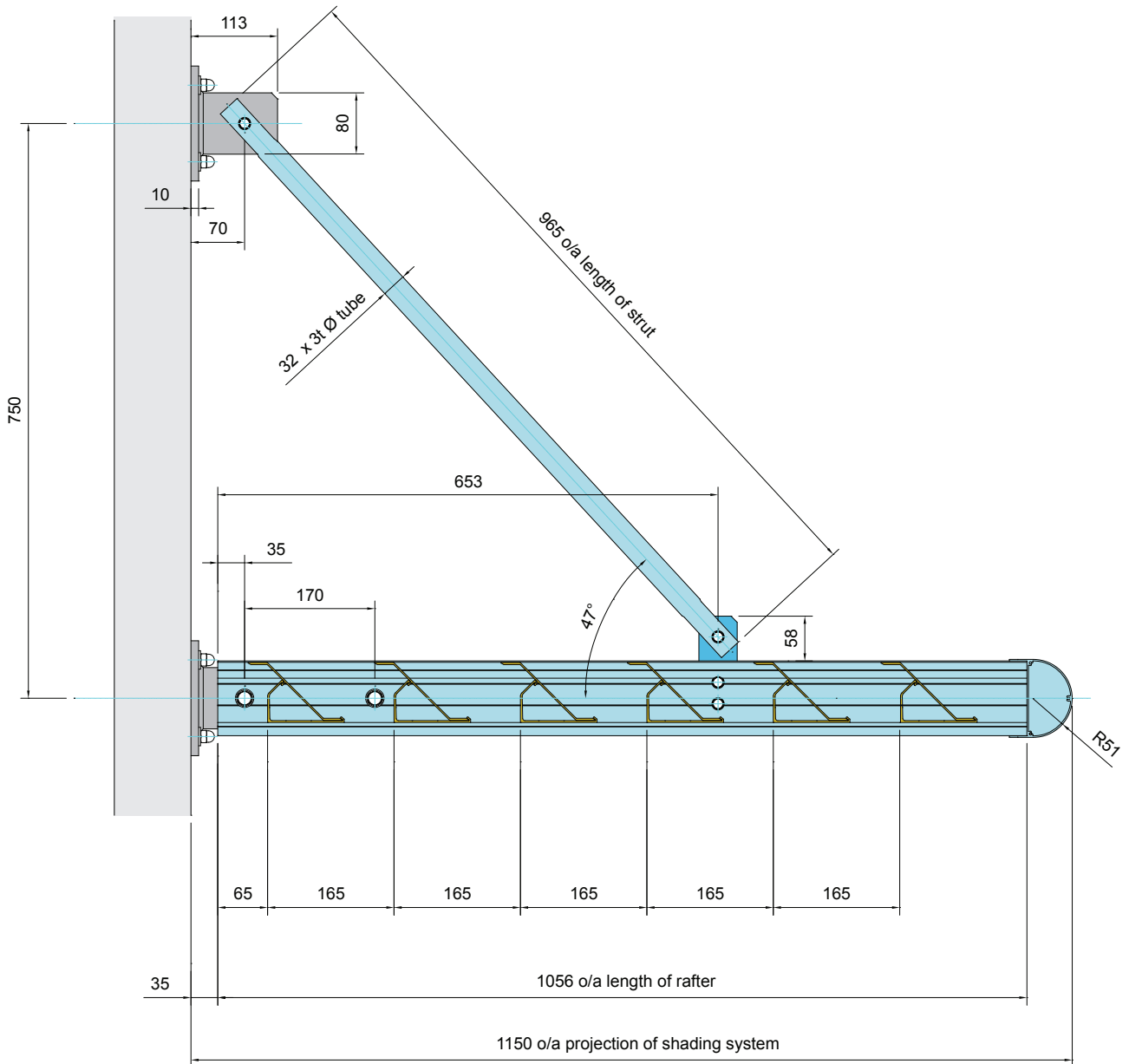
Linear Solar Shading

Typical Section C/W Optional Strut 2



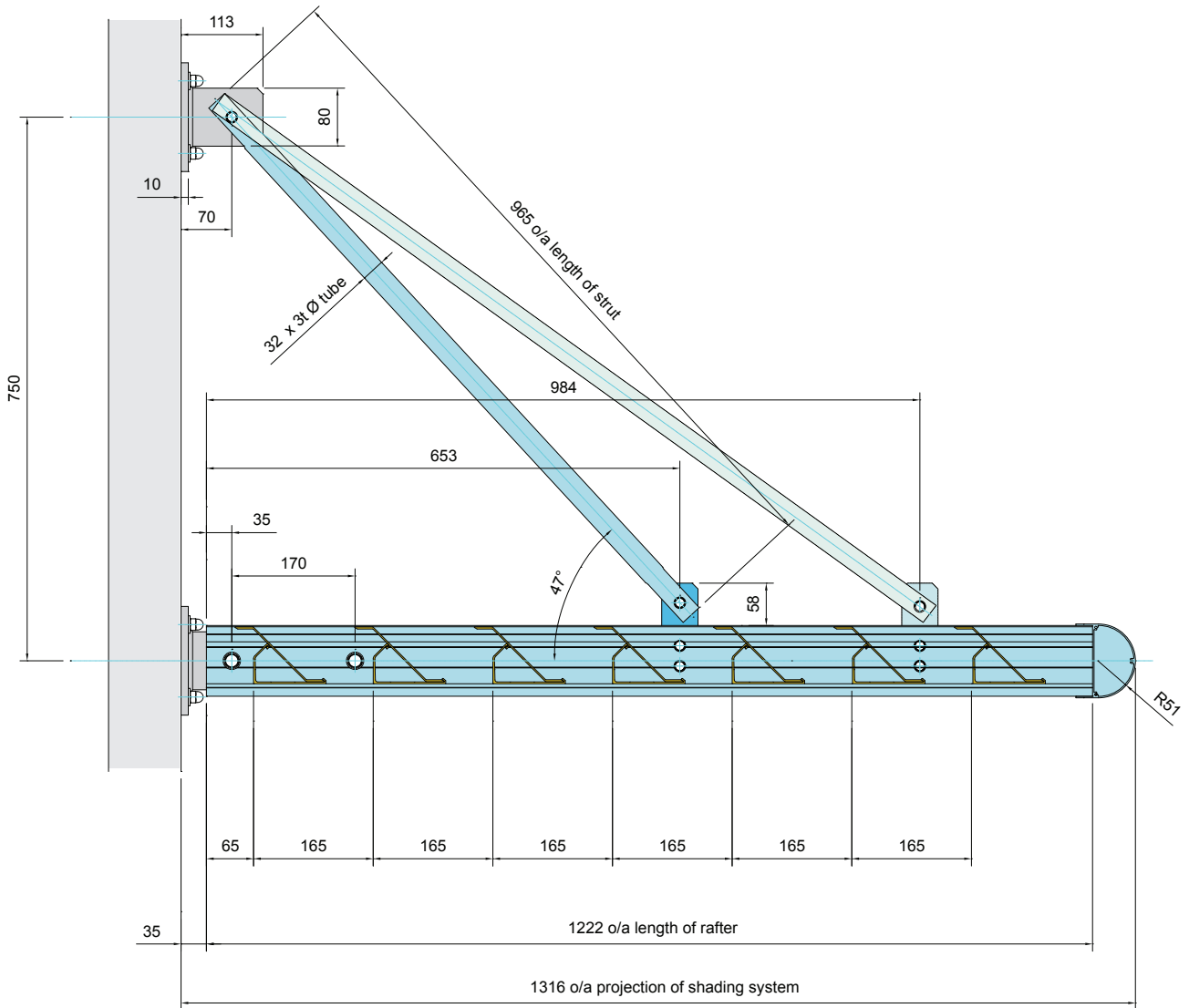
Linear Solar Shading

Typical Section C/W Optional Strut 3



Linear Solar Shading

Typical Section C/W Optional Strut 4



Linear Solar Shading Typical Section C/W Optional Strut 5

