

X-Line Actuated Louvres Panel Overview

AQUARIUS AC-100

Aquarius XLINE-AC 100 extruded aluminium louvre screening system with louvre blades set to 100mm vertical pitch.

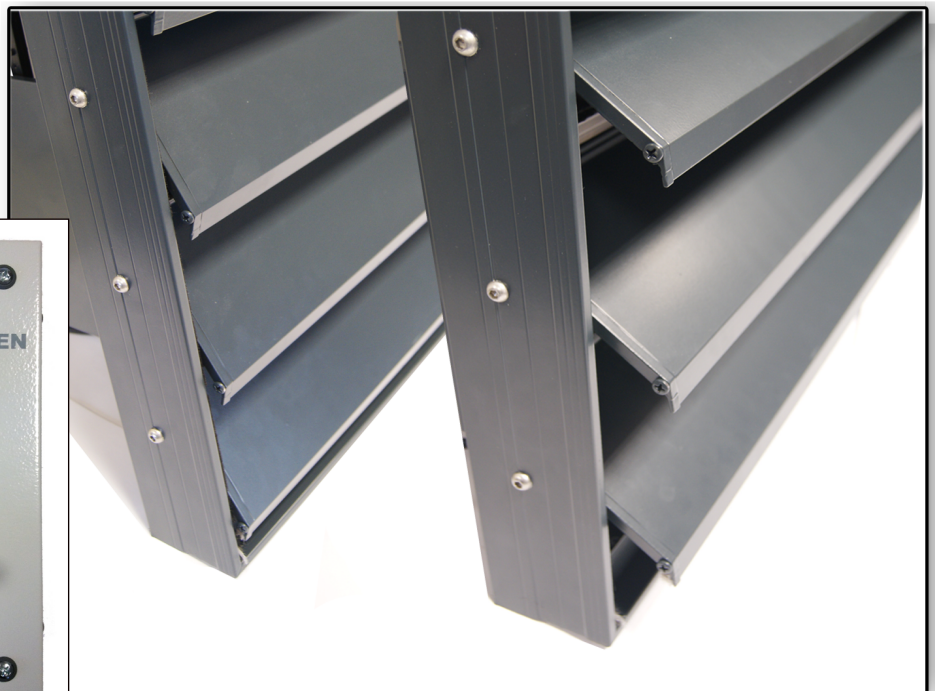
Louvre blades are fixed through the frame via M6 Bolts, through Rivnuts into blade endplates. Fixed between the structural opening height at nominal 1250mm horizontal centres, across the width of the panel.

These panels can be arranged as a modular or continuous construction to be made to any structural opening.

The X-line AC-100 louvre blade and Universal frame are manufactured to BS1474:6063:T6 aluminium specification.

These aluminium extrusions can be coated to an anodising quality finish. We have allowed for a black polypropylene insect mesh to the rear of the louvre panels.

Solinear can also Manufacture, supply and install solinear control boxes if a separate control system is necessary.

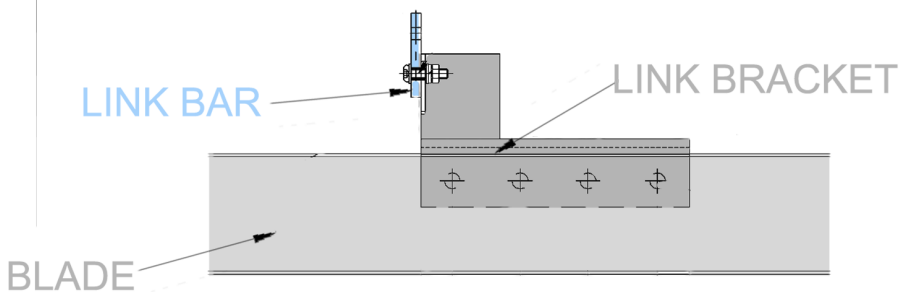


X-Line Actuated Louvres Panel Mechanics

The blades are connected to a 6mm thick Laser-cut link bar, as shown in the picture to the right. The various orientations of the blades, whether that be the maximum or minimum apertures, change the airflow accordingly.

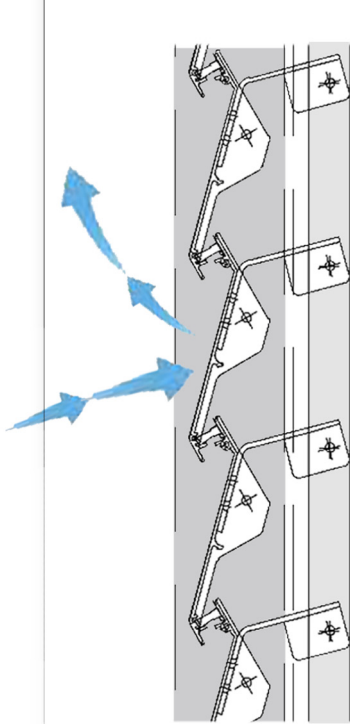
The blades requires a link bar to effectively synchronise the movement, so all blades move in unison. This link bar connects directly to a motor and arm driver.

All fasteners for the link arms and mechanisms are fixed with A2 stainless steel M6 bolts, with necessary washers and nuts to promote the movement of the blades.



X-Line Actuated Louvres

Airflow Specification



The AC-100 panels have an airflow free area of 57.9%. X-Line 50 and 75 have different airflow specification.

When closed, the brush seal at the top of each blade seals the louvre. The internal perimeter of the frames free area, encourages the movement of the blade. Brush seals create an airtight seal.

