

R

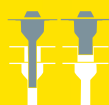
for Refurbishment

The older the roof, the greater the risk.

Keep an eye on the condition of your roof at all times with Sita. Flat roof refurbishment is required more and more frequently.

There are lots of reasons for this - changed regulations, leaking old rainwater outlets and pipelines, damaged roof skin and even saturated insulation. Statutory regulations mean that thermal insulation has to be topped up.

As your refurbishment partner we can help you to update your drainage system - and comply with the required standards.



SitaSani® 63/90



SitaSani® 95



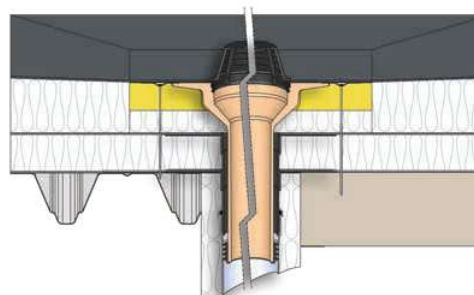
SitaSani® 110

Properties

The SitaSani® problem solver with a long spigot and sealing ring. This compensates for the existing waterproofing and insulation layers to the rainwater outlet or fall pipe in place. Multi-compatible for almost any make of rainwater outlet, the rainwater outlets of this series can solve almost any refurbishment task. The various sealing rings are used to match the existing internal diameters. The integrated and additionally fixed selected connection sleeve offers a homogeneous connection to the roof seal.

- + Backflow safe up to a water column of 2 metres
- + To refurbish rainwater outlets and for refurbishment down into the fall pipe
- + With selected connection sleeve
- + Can be installed and sealed very quickly





Installation example



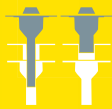
R

Quality marks

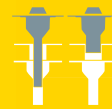


SitaSani®	Backflow safe for internal diameters from-to (mm)	Spigot length (mm)	Article number
 63	68-86	550	10 63 xx
 90	98-107	550	10 32 xx
 95	100-140	250	10 28 xx
	100-140	500	10 38 xx
 110	117-124	775	10 34 xx

SitaSani®



SitaSani® 125



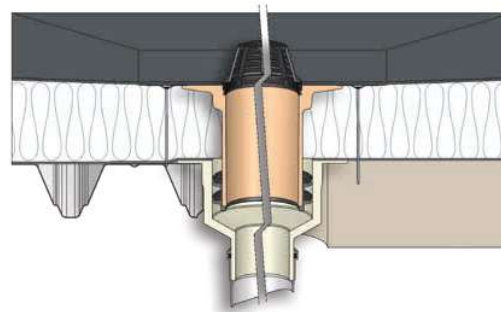
SitaSani® 165

Properties

The SitaSani® problem solver with a long spigot and sealing ring. This compensates for the existing waterproofing and insulation layers to the rainwater outlet or fall pipe in place. Multi-compatible for almost any make of rainwater outlet, the rainwater outlets of this series can solve almost any refurbishment task. The various sealing rings are used to match the existing internal diameters. The integrated and additionally fixed selected connection sleeve offers a homogeneous connection to the roof seal.



- + Backflow safe
- + To refurbish rainwater outlets and for refurbishment down into the fall pipe
- + With selected connection sleeve
- + Can be installed and sealed very quickly

Installation example



Quality marks



SitaSani®	Backflow safe for internal diameters from-to (mm)	Spigot length (mm)	Article number
 125	134-168	250	10 27 xx
	134-168	550	10 37 xx
 165	165-205	200	10 29 xx
	165-205	550	10 40 xx

SitaSani® Screw-on flange



SitaSani® 63/90
Screw-on flange



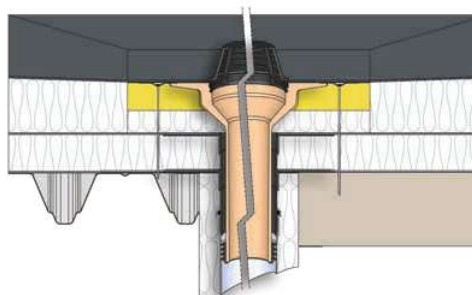
SitaSani® 165
Screw-on flange

Properties

The SitaSani® screw-on flange problem solver with a long spigot and sealing ring. This compensates for the existing waterproofing and insulation layers to the rainwater outlet or fall pipe in place. Multi-compatible for almost any make of rainwater outlet, the rainwater outlets of this series can solve almost any refurbishment task. The various sealing rings are used to match the existing internal diameters.




- + Backflow safe
- + To refurbish rainwater outlets and for refurbishment down into the fall pipe
- + With loose-fixed flange construction
- + Can be installed and sealed very quickly

Installation example



R

Quality marks

SitaSani® screw-on flange	Backflow safe for internal diameters from-to (mm)	Spigot length (mm)	Article number
 63	68-86	550	10 63 99
 90	98-107	550	10 32 99
 165	165-205	550	10 40 99



SitaSani® 160 DSS



SitaSani® 160 DSS



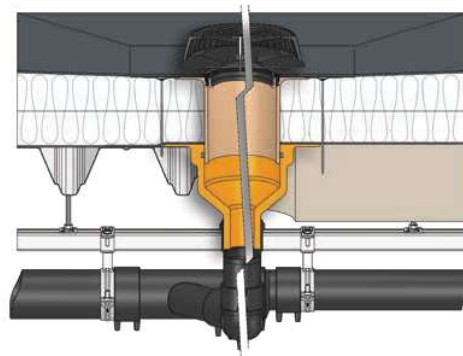
SitaSani® 160 DSS
Screw-on flange

Properties

For the refurbishment of siphonic drainage rainwater outlets in place with a pot diameter of 160 mm, the **SitaSani® 160 DSS** can easily bridge the thermal insulation. The relevant Airstop prevents the unwanted ingress of air, thus ensuring that the pipe system in place is completely filled. The integrated and fixed selected connection sleeve delivers a homogeneous connection to the roof seal. The SitaSani® DSS 160 is also available in a screw-on flange version.



- + For siphonic drainage rainwater outlets in place with a pot diameter of 160 mm.
- + With Airstop for siphonic drainage
- + With either with loose-fixed flange design or selected connection sleeve
- + Can be installed and sealed very quickly

Installation example



Quality mark



SitaSani® 160 DSS	Spigot length (mm)	Article number
	200	10 60 xx
	550	10 61 xx
 screw-on flange	550	10 61 99