

Pre-weathered titanium zinc with motif

NedZink NOVA STRUCTURE

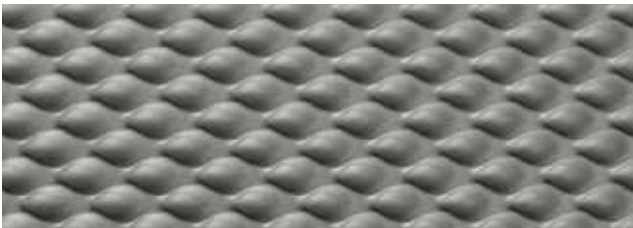


Product description

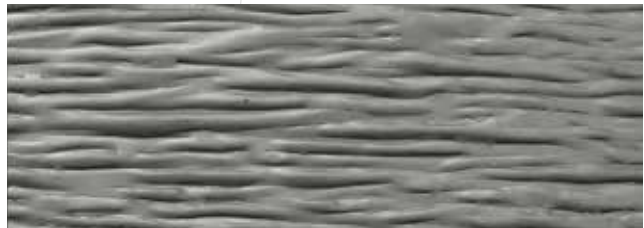
NedZink NOVA STRUCTURE is titanium zinc with motif available in different patterns. 'NedZink NOVA' as basic material is titanium zinc according to EN 988 that undergoes a patination process. The chemical composition, mechanical and physical properties and measurement tolerances are determined in the KOMO product certificate and the product certificate from Lloyd's Register, LRIQS (Approval QIS 122).

The defined material properties are checked by an independent and neutral research institute at regular intervals. This product certification and the ISO 9001:2008 certificate for the quality management system at NedZink assure a constant and uniform high quality, meeting our own standards and far exceeding EN 988. NedZink NOVA STRUCTURE is mainly used for visibly and aesthetically high quality applications outside and inside. This includes roofs, façades and various interior designs.

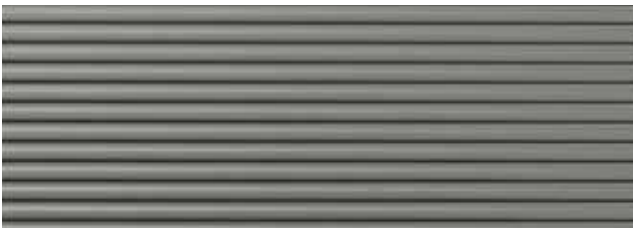
Surface structure



NOVA STRUCTURE Amsterdam



NOVA STRUCTURE Brasilia



NOVA STRUCTURE New York



NOVA STRUCTURE Paris

Product range

SHEETS	
standard sizes	1000 x 3000 mm
material thickness	0,80 mm
packaging	on pallets of approx. 1,000 kg

Transport and storage

NedZink products are packed and sent dry. The advice is to store titanium zinc dry and ventilated. This reduces the probability of condensation formation.

Surface

'NedZink NOVA Structure' titanium zinc is subjected to a patination process with a surface structure. Rolling and smoothing with imprint rollers results in a surface treatment that provides NedZink NOVA with a surface structure on both the top side and bottom side of the material. The properties of zinc as a building material do not change.

Properties of the material

A continuous stamp is applied to the back of all products in accordance with the provisions of EN 988 with the markings:

- NedZink NTZ
- The name titanium zinc in 4 languages; Dutch, German, French and English
- Product standard EN988
- The nominal thickness
- Batch number
- Year of production
- Logos of KOMO and Lloyd's Register

The products supplied when incorporated within any system, compliant with the suppliers guidelines for processing and installation, will remain water impervious and not perforate due to manufacturing defects.

For additional information about the product range and the processing of NedZink products, see our website www.nedzink.com.

NedZink 

Netherlands

NedZink B.V.
Postbus 2135, NL-6020 AC Budel
Hoofdstraat 1, NL-6024 AA Budel-Dorplein
Tel: +31 (0)495-455700
Fax: +31 (0)495-455790
www.nedzink.com | info@nedzink.com

Germany

NedZink GmbH
Im Lipperfeld 21
D-46047 Oberhausen
Tel: +49 (0)208-85798-0
Fax: +49 (0)208-85798-30
www.nedzink.de | info@nedzink.de

Belgium

NedZink n.v.
Avenue Jean Lenoir 14
B-1348 Ottignies (Louvain-la-Neuve)
Tel: +32 (0)10-452727
Fax: +32 (0)10-453362
www.nedzink.be | info@nedzink.be



Koramic
INVESTMENT GROUP

NedZink trademarks

NedZink® NATUREL, NedZink® NOVA, NedZink® NOIR, NedZink® NATUREL Pro-Tec, NedZink® NOVA Pro-Tec, NedZink® NOIR Pro-Tec, NedZink® NOVA STRUCTURE, NedZink® NOVA COMPOSITE and NTZ®

Liability

This brochure was produced with the utmost care. All information specified in this brochure is according to our current knowledge, and gives information about our products and their uses. It is not, however, intended as a guarantee for certain properties of the products or their suitability for an actual application. One can therefore derive no rights from the content of this brochure.