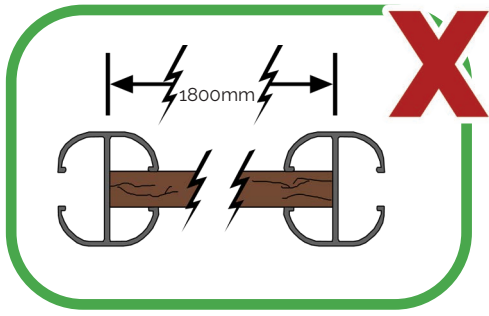


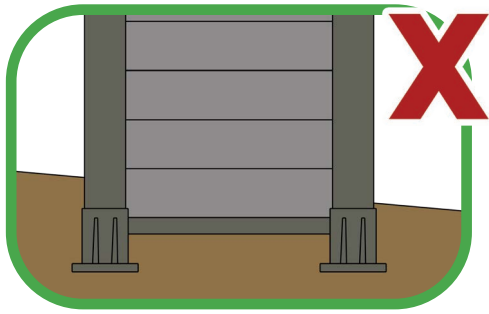
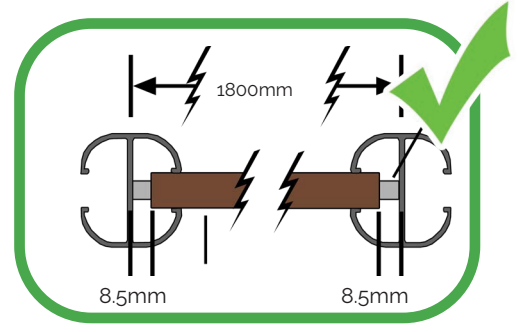


COMPOSITE FENCING

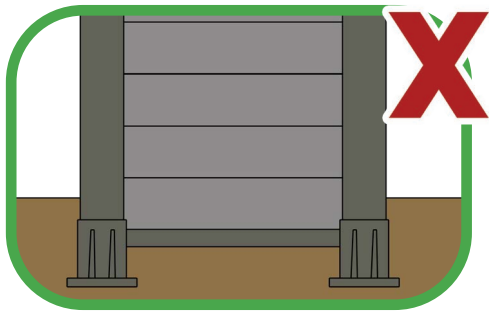
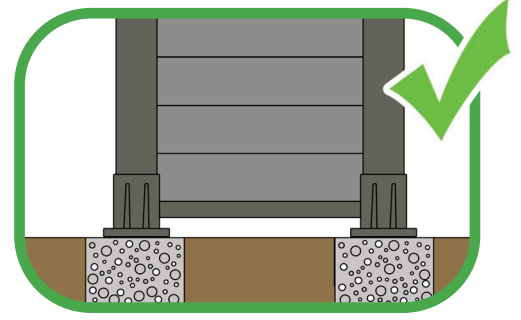
INSTALLATION MANUAL



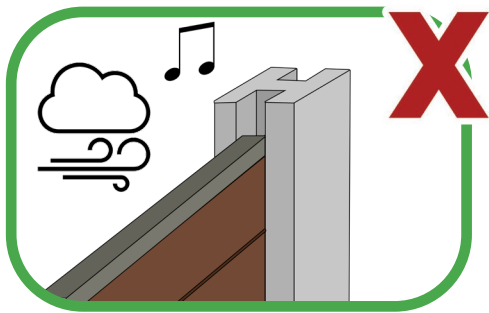
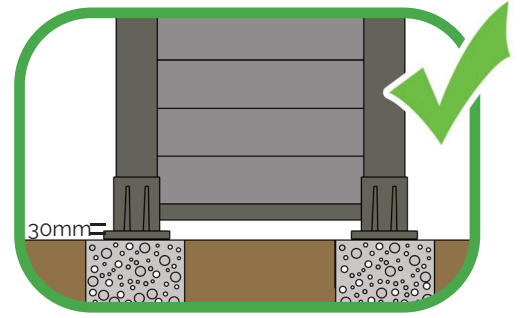
Always leave sufficient gaps at both ends of composite fence panels to allow for expansion otherwise you risk damaging the fence as a whole.



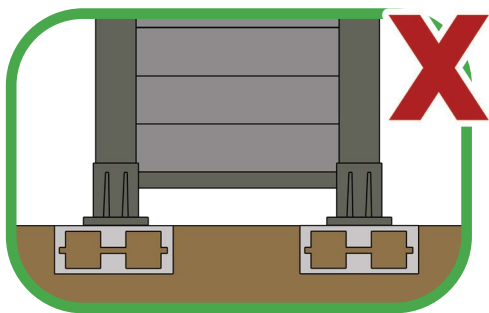
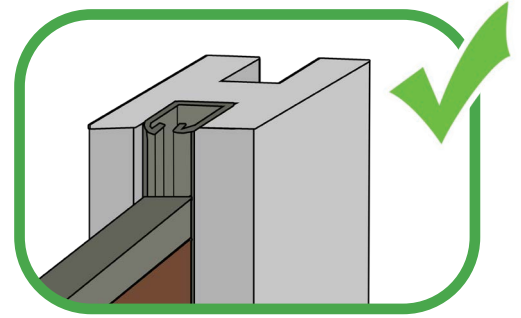
Never use composite fencing as a gravel board or a structural product.



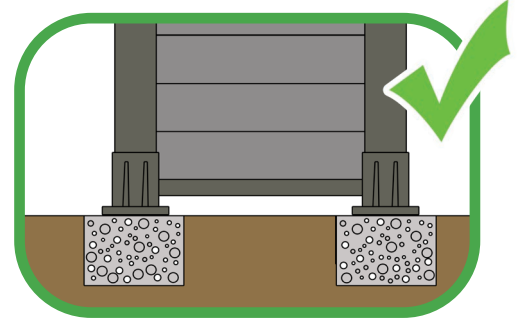
A minimum gap of 30mm **must** be allowed for drainage at the bottom of each fence panel. Gravel can be used to hide the gap.



Our Aluminium Concrete Post Adapter's **must** be used when installing our fencing into pre-installed concrete posts.



Do not fix posts to hollow bases such as breeze blocks.



BEFORE YOU START INSTALLATION

Select the location of your fencing carefully having regard for privacy, sun, shade and wind, as well as your neighbours.

INSTALLATION MANUAL: LIST OF COMPONENTS

TOOLS REQUIRED

Level, Line, Tape Measure, Mallet, M12 anchors and screws (anchors for railing are recommended)

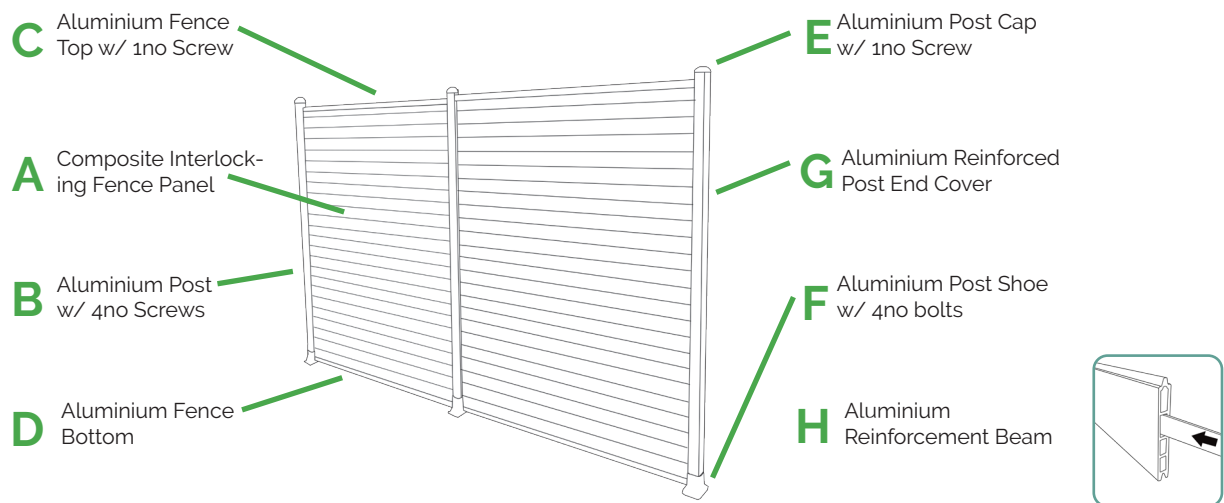


FIGURE	CODE	IMAGE	TITLE	DIMENSIONS
A	TNF001		Composite Interlocking Fence Panel	L: 1783 x W: 159 x H: 21mm
B	TNF002S TNF002L TNF002C		Short Aluminium Post Long Aluminium Post Corner Aluminium Post	L: 1905 x W: 73 x H: 66mm L: 2400 x W: 73 x H: 66mm L: 2400 x W: 73 x H: 66mm
C	TNF003A TNF003B		Aluminium 6ft Panel Top Rail Aluminium Small Panel Top Rail	L: 1800 x W: 25 x H: 30mm L: 1800 x W: 25 x H: 30mm
D	TNF004		Aluminium Bottom Rail	L: 1800 x W: 20 x H: 39mm
E	TNF005		Aluminium Post Cap w/ 1no Screw	L: 70 x W: 63 x H: 18mm
F	TNF006		Aluminium Post Shoe w/ 4no Bolts and 4no Screws	L: 140 x W: 100 x H: 90mm
G	TNF007 TNF009		Aluminium Post End Cover (Long and Short Versions)	L: 1905 x W: 26 x H: 8mm or L: 30 x W: 26 x H: 8mm
H	TNF008		Aluminium Reinforcement Beam	L: 1800 x W: 33 x H: 11mm
I	TNF010		Aluminium Concrete Post Adapter Kit	L: 1905 x W: 48 x H: 40mm
K	TNF010		Adjustable Height Riser w/ 1no	

INSTALLATION MANUAL: Aluminium Posts into Shoes

There are 3 ways to install our composite fencing system.
Please jump to the suitable figure for your individual project:

- 1a INSTALLATION WITH POST SHOE (FOR PANELS NO HIGHER THAN 4FT / 1.2M)**
1b INSTALLATION INTO CONCRETE
1c INSTALLATION USING PRE-ERECTED CONCRETE POSTS

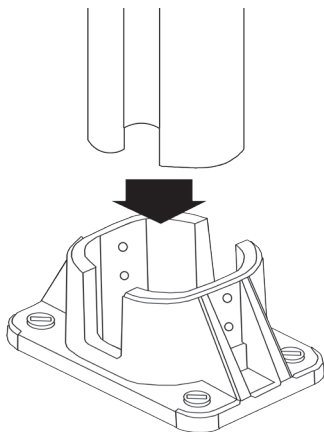
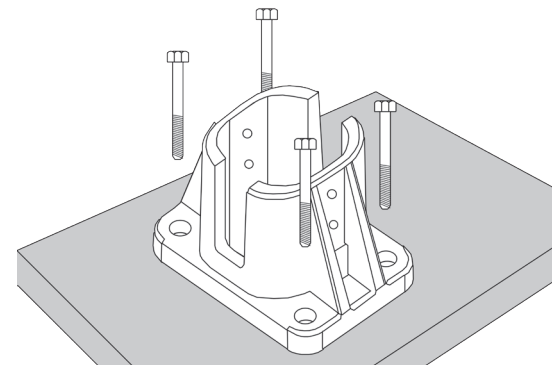
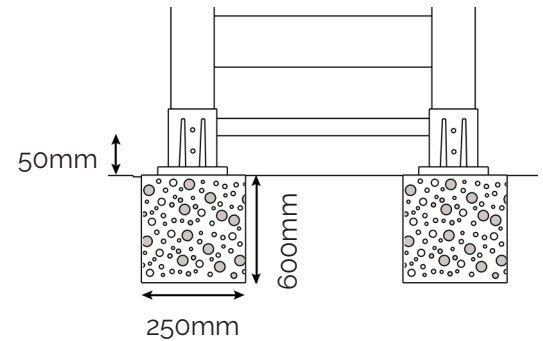
1a INSTALLATION WITH POST SHOE (FOR PANELS NO HIGHER THAN 4FT / 1.2M)

Before you commence installation, decide whether you require the fence to be at ground level or not. If you install the post shoes at ground level please be aware that a 30mm gap between the ground and the bottom of the fence will be visible as it is required for drainage. The gap can be disguised with gravel to still allow for water to drain away.

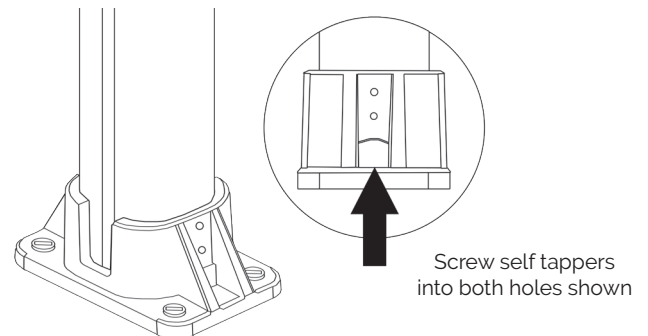
You are strongly advised to install TNF006 Aluminium Post Shoe on a flat strong concrete block made to British Standard BS8500 with a minimum dimensions of 250mm wide x 250mm length and 600mm depth or a solid concrete floor base that is at least 150mm deep.

Check the flatness of the concrete with a spirit level. We strongly prohibit the fixing of our post shoes to hollow supports such as breeze blocks.

- Position the first TNF006 Aluminium Post Shoe
- Track the anchors
- Remove the TNF006 Aluminium Post Shoe
- Pierce the solid concrete block
- Re-position the TNF006 Aluminium Post Shoe and fix with the 4 bolts provided.
- Fix the second TNF006 Aluminium Post Shoe as above ensuring the gap between the posts will be 1800mm from centre to centre.



- Push the TNF002 Aluminium Posts into the fixed Post Shoes ensuring they are plumb.



- Screw the two self tapping screws on each side of each post as shown.

- Slot the TNF004 Aluminium Bottom Rail between the two Aluminium Posts, pushing down until it sits on the shoes.

CONTINUE TO STEP 2

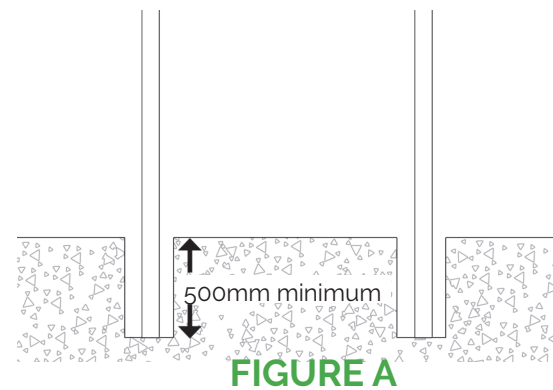
1b INSTALLATION OF POSTS BY BURYING INTO CONCRETE

For this style of installation we recommend 2 persons.

Post installation into concrete must be done with care. We recommend the use of "rich" concrete to British Standard BS8500.

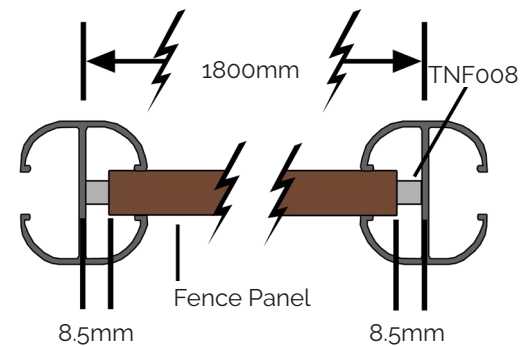
It is recommended to tighten a line between 2 stakes spaced 1800mm apart.

This dimension is vital to allow the composite fence boards to expand and contract.



A. Dig the footing holes for the posts. Holes must be a minimum of 250mm in diameter and 500mm deep into compact and solid ground. Adjust the holes dimension without reducing the height of the post above the ground. See Figure A.

B. Pre-position the post in the holes. The posts must be spaced at 1800mm between the post centres. Use a TNF008 Reinforcement Beam as a spacer to get the distance correct. It is necessary to leave a gap of 17mm between the fence board and the centre rib of the posts (8.5mm either side) and the TNF008 will allow for this. See Figure B.



C. Wedge the posts between the walls of the hole with stones or bricks to a height of roughly 80mm.

D. Ensure the posts are plumb.

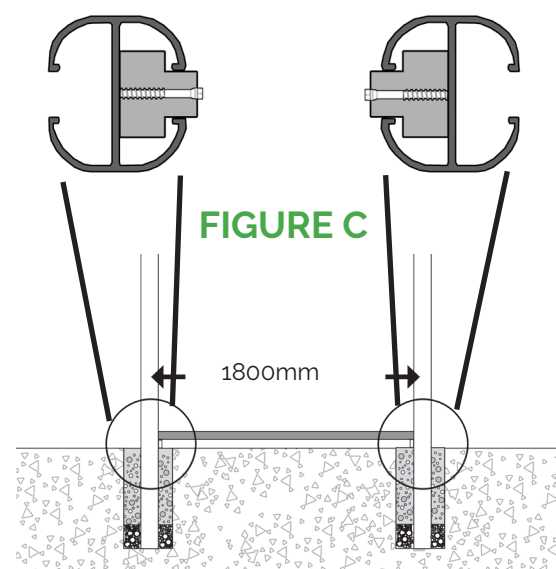
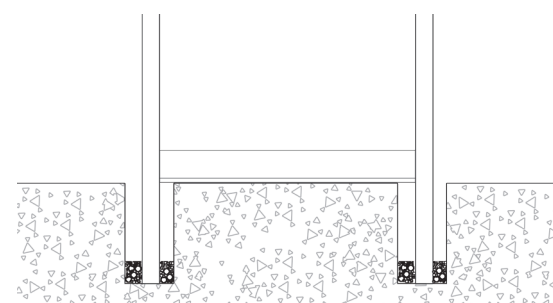
E. Check and control the height of the posts.

F. Fill the holes with "rich" concrete and at the same time control the height of the posts, the plumb and the 1800mm space between the posts (centre to centre). We recommend not doing this alone.

G. Leave to dry. After the concrete has dried control the 1800mm space between the posts again.

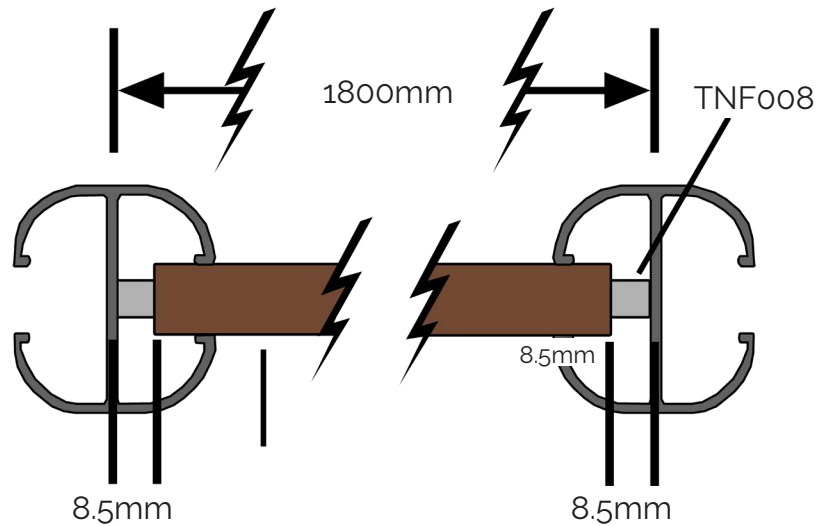
H. Please be aware that a 30mm gap between the ground and the bottom of the fence will be visible as it is required for drainage. The gap can be disguised with gravel to still allow for water to drain away. Fix Adjustable Height Risers to both bottoms of the insides of the posts, to allow for this gap. See Figure C.

I. Slot the TNF004 Aluminium Bottom Rail between the two posts pushing down until it sits on both of the Adjustable Height Risers.



COMPOSITE FENCE PANELS INTO ALUMINIUM POSTS

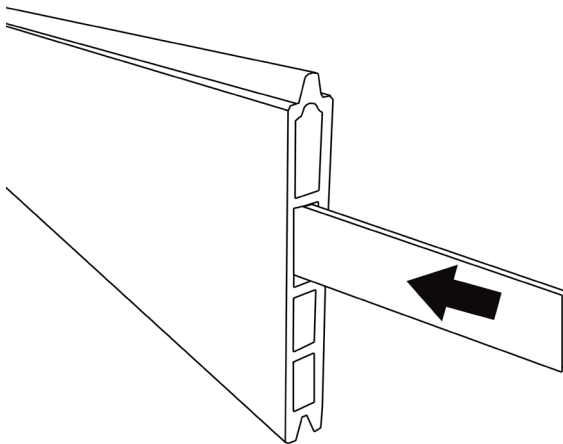
2



TNF001 Composite Fence Panel length is 1783mm (+/- 3mm) and a 1800mm gap must be allowed for between posts. This excess is vital to allow the composite to expand and contract.

If necessary, re-cut the boards to respect the required 8.5mm gap between the end of the board & the centre of the posts.

3

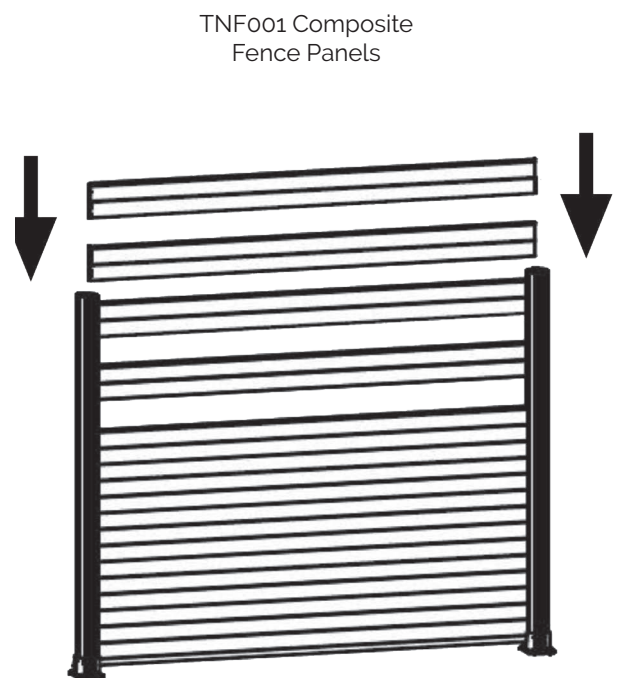


Slot TNF008 Aluminium Reinforcement Beams as above into the fence panels at the following intervals:

For 1.8m tall fences slot reinforcements into the 3rd, 6th and 9th fence boards width.

For 1.2m tall fences slot reinforcements into the 2nd and 5th fence boards width.

4



Slot TNF008 Aluminium Reinforcement Beams as above into the fence panels at the following intervals:

For 1.8m tall fences slot reinforcements into the 3rd, 6th and 9th fence boards width.

For 1.2m tall fences slot reinforcements into the 2nd and 5th fence boards width.

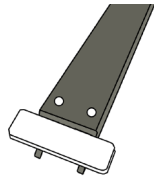
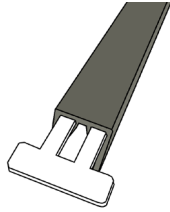
COMPOSITE FENCE PANELS & FINISHES

5 INSTALLATION OF ALUMINIUM TOP RAILS

FOR PANELS SMALLER THAN 6FT WIDE (1800MM)

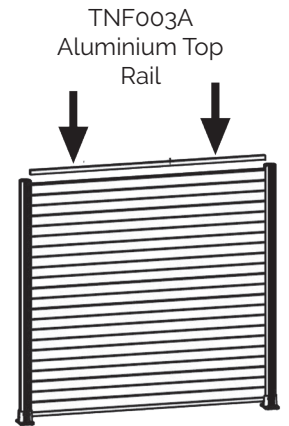
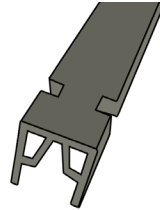
Push the TNF003B Fence Top adapters into both ends of the Top Rail to prevent movement when installed.

Once in place use the 2 provided screws to screw through the face of the top channel to hold the teeth in place. Push the Fence Top on to the fence panel.



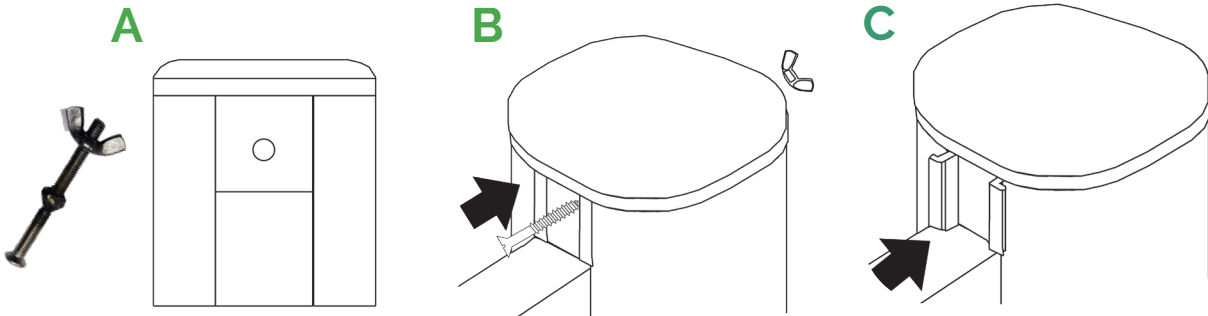
FOR STANDARD 6FT WIDE (1800MM) PANELS

Push the TNF003A Fence Top so that the grooves slot into either side of the fence post.



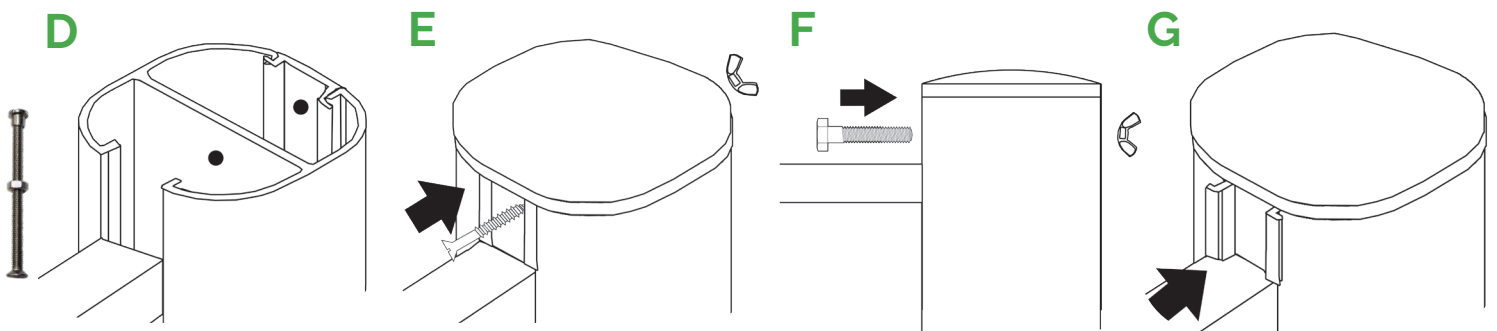
6 INSTALLATION OF POST CAPS

Do not stick, solder or screw boards to each other or the posts.



FOR POSTS IN THE MIDDLE OF A RUN

A. Push Post Caps onto each Post. Push the Post Cap screw through the cap and post and screw to tighten. See Figure A.
B. Take 2 Short Aluminium Post End Covers and push into the reveals on either side of each post as shown on Figure C.



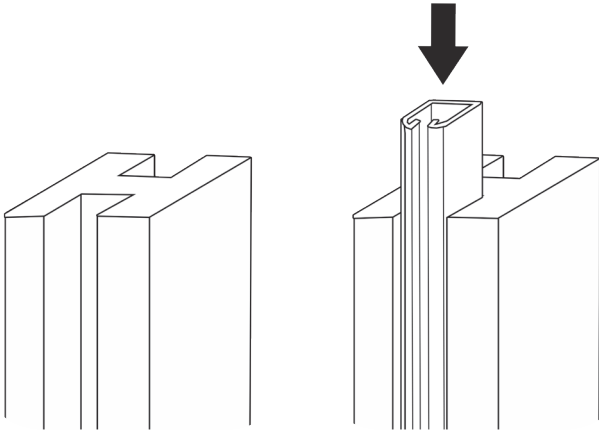
FOR POSTS AT THE END OF A RUN

A. Measure the distance from the centre of the screw hole to the top of the Post and pre drill a length Long Post End Cover that has been cut to the length of the full post. Slot in place as shown. See Figure D.

B Push the Post Cap in place & push the screw through using the outer thumb nut to secure. See Figure E & F.

C. Take a Short Aluminium Post End Cover and push into the reveal on the side of the post above the rail. See Figure G.

1C INSTALLATION USING PRE-ERECTED CONCRETE POSTS



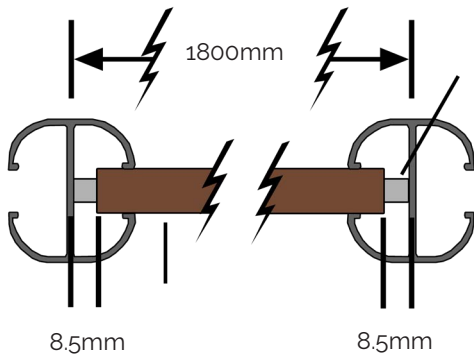
If you are using pre erected concrete posts, remove old fencing panels and ensure each concrete post is plumb, and at a maximum of 1800mm centres.

A. Insert concrete gravel boards into each proposed panel.

B. Measure lengths of TNF010 Aluminium Concrete Post Adapter to suit the reveals on each side of each concrete post to be used.

C. Slot each Post Adapter into place and fix into the concrete using the screws provided.

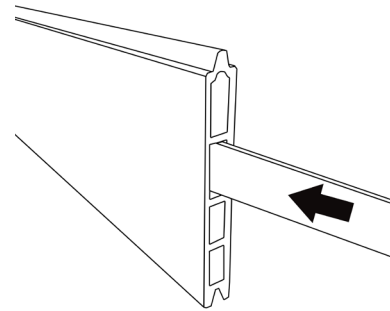
1d



TNF001 Composite Fence Panel length is 1783mm (+/- 3mm) and a 1800mm gap must be allowed for between posts. This excess is vital to allow the composite to expand and contract.

If necessary, re-cut the boards to respect the required 8.5mm gap between the end of the board & the centre of the posts.

1e

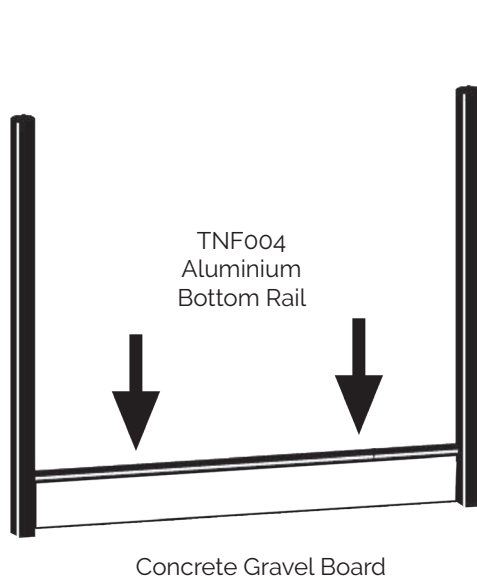


Slot TNF008 Aluminium Reinforcement Beams as above into the fence panels at the following intervals:

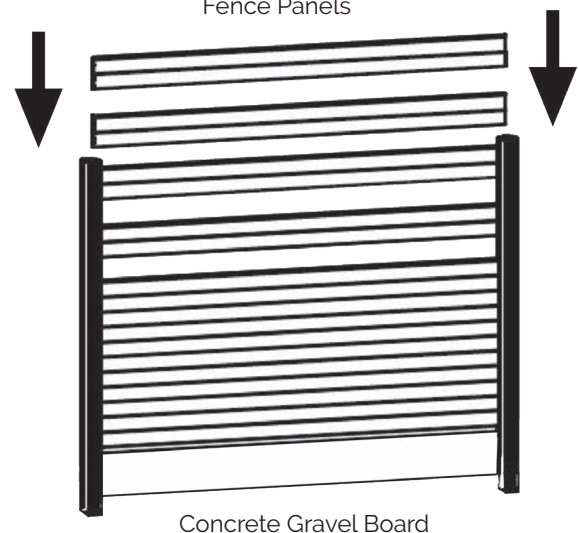
For 1.8m tall fences slot reinforcements into the 3rd, 6th and 9th fence boards width.

For 1.2m tall fences slot reinforcements into the 2nd and 5th fence boards width.

1f



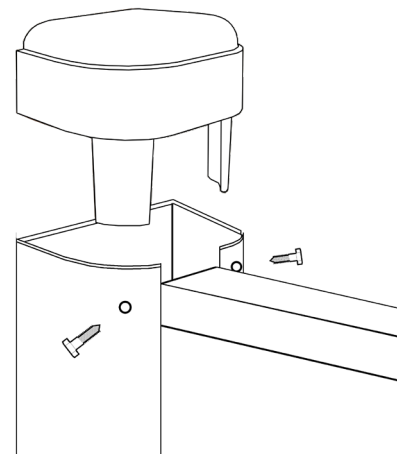
TNF001 Composite
Fence Panels



1g INSTALLATION OF POST CAPS

Do not stick, solder or screw boards to each other or the posts.

- A. Push Post Caps onto each top of each Aluminium Concrete Post Adapter to finish.
- B. Pre drill the post on both sides so there is a hole through both prongs centres.
- C. Screw in place using the screws provided.



Maintenance of Composite Fence Panels

Boards require little maintenance. We recommend you to wash your boards per month/season as necessary with water and soap. For a standard washing, use soft detergent and water.

If mould / mildew appears on you boards, clean with a product containing chlorine bleach. Test on a hidden area first. For oil and grease stain, wash immediately with a degreasing agent.

If necessary use a medium grain sand paper and sand slightly in the direction of the grain. Rinse the board before doing this operation. Brushing and sanding may generate a slight discolouration of the board, which is absolutely normal, and will vanish over the time.

Do not use solvent based material. Do not stain, oil or use normal paint on our fence boards. Builddeck Composite Fence Boards can be painted used specialist paint if necessary. Caution : In protected or semi protected areas (trees, vegetation...) dampness stains may appear. Stains vanish under UV. If necessary rinse evenly with water and let dry naturally.

Maintenance of Aluminium Components

These parts do not require any specific maintenance. We strictly prohibit the use of any acid based product, and do not advise the use of solvent which can affect the painting. These seven components are an aluminium alloy; consequently they do not go rusty. You can maintain them with classical cleaning materials.

Storage & Handling

All fence components should be stored indoors away from UV, rain & damp and be kept in their packaging. Fence boards should be stored on a flat and ventilated surface and correctly supported on beams at 300mm centres

Reminders

The colours of the boards will slightly change during the first weeks following the installation. If ordering an additional board, you may observe a slight difference with the one installed, which is again absolutely normal as the difference will vanish over the time due to UV exposure. Colours may slightly differ to samples received due to goods being ordered in different batches to samples as to our fence panels being man made recycled product. Due to this we recommend ordering all goods in one batch.

Builddeck Composite Fence boards are guaranteed 10 years against rot and insects in normal conditions of use. This guarantee covers replacement of damaged products only. Installation and related costs are excluded from the guarantee.

As our composite wood is a man-made recycled product, colour variations are to be expected. Our warranty does not cover colour fade, discolouration, water marks, or stains on our products.

To make sure you get the full advantage from your new composite fencing, we recommend our customers use a qualified, professional installer to fit our system. Please contact our team if you have any queries or questions in regards the installation process prior to commencing the job.

Please see our website <http://www.builddeck.co.uk> for our Warranty and Terms and Conditions for further details.

