

Series 41

AutoCAD Block

Drawings

Product Drawings Created for use with AutoCAD release 2000 and later

The drawings are intended to be inserted as blocks into AutoCAD drawing files.

This service is provided by Selectaglaze as a convenience to our clients.

The data supplied is of a confidential nature and is not to be passed on to or shared with a third party, except in printed form, without prior written consent from Selectaglaze.

The use of these drawings for any purpose whatsoever will be taken as a full acceptance of their confidentiality, and an agreement to abide by it.

Details of secondary glazing products compatible with AutoCAD 2000

The drawings are derived from the sectional details used within Selectaglaze for all CAD drawing production.

They comprise nine sub-assemblies and three front elevations.

The sub-assemblies contain mainly polylines to reduce the number of pieces and ease the construction of other details not specifically drawn.

There is an overview drawing, **Series-41.dwg**, which contains all the other drawings as blocks in addition to a copy of the instructions and a simplified printable recognition sheet.

The sub-assemblies are intended to be inserted onto a construction line which spans the structural opening.

The jamb, head & cill blocks locate onto the endpoints of the line - the softwood ground block (Batten_Std) inserts onto the same points (although it must be mirrored for the left jamb and the head).

The meeting section block locates onto the mid point of the line.

Coupling sections can be created by inserting one of the coupling section blocks onto the construction line at a point level with the centreline of the primary transom/mullion (if shown). The jamb, head & cill blocks then locate onto the same point.

Note: Only 6mm glass is shown, some exploding and stretching would allow other thicknesses. Use the alternative bead for glass thicker than 7.5mm.

Also included are three simple front elevations which can be exploded and stretched to the required dimensions (the hinges and handle would, of course, have to be re-centred).

Mirror to reverse the handing - allow 4mm between coupled units.

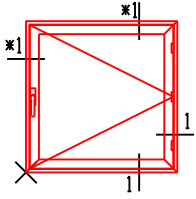
The meeting stile centreline of the double unit is on the non-printing 'Defpoints' layer.

The standard non-locking handle is shown in a central position.

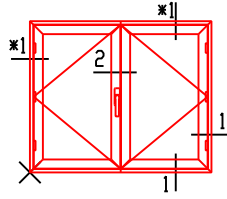
Note: tolerances and installation clearances should never be taken, assumed or deduced from these drawings.

A standard minimum clearance of 3mm on each of the four sides would increase depending upon the opening and the treatment.

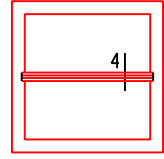
Selectaglaze have exercised reasonable care in the preparation of the information but do not warrant it's accuracy in any way and shall not be liable for any loss or damage occasioned to any person whether directly or indirectly by the use of the information. It is the Customer's responsibility to ensure that any information supplied is maintained in a current state and properly applied.



S-40_shc
w:1000 x h:1000

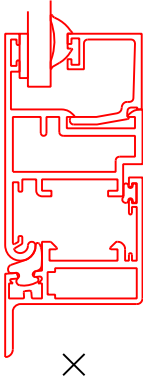


S-40_dshc
w:1200 x h:1000



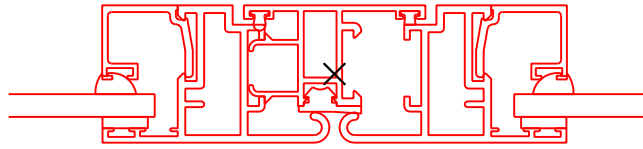
Any type

* handed



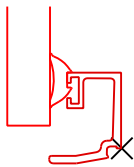
1

S-41_01
Cill, head & jamb
Casement opener - standard frame

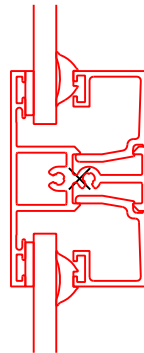


2

S-41_02
Meeting stiles - right-hand leaf leads

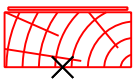


S-41_03
Alternative bead for thick glass

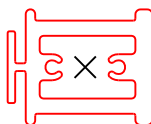


4

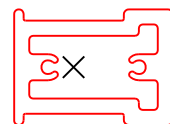
S-41_04
Internal muntin rail



Batten_Std
Standard softwood ground.



Coupling_Std
Standard coupling transom - vertical section.



Coupling_Hd
Heavy duty coupling transom - vertical section.