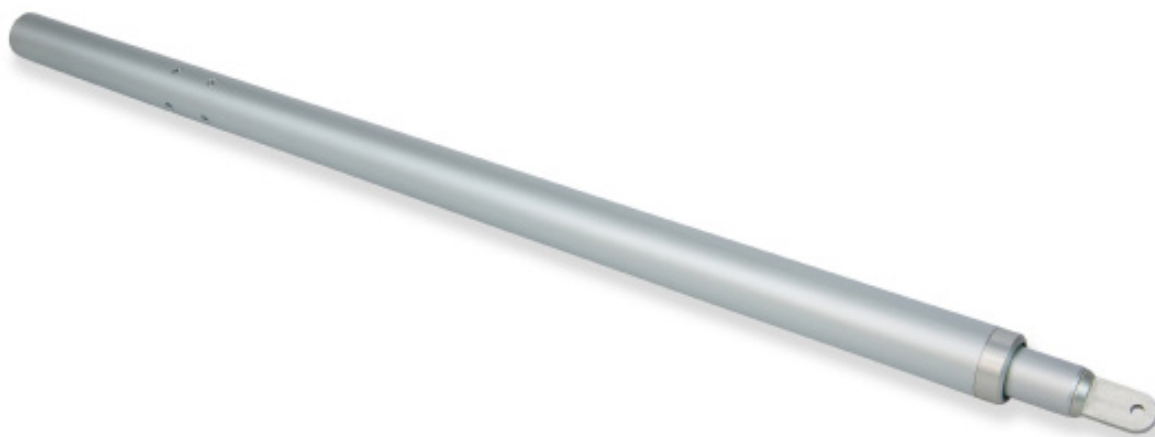


TGLA 24 200

Linear Drive Actuator / 24 V dc / 2,000 N



Linear Drive Actuator / 24 V dc / 2,000 N

This is an extremely strong linear drive providing 2000 N of force.

It is mainly used for sloping smoke ventilators and rooflight applications

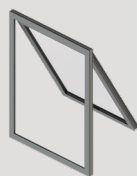
Large vents can be opened large distances due to the force and opening strokes available

Standard finish is Anodised Aluminium

Orientation



Bottom Hung



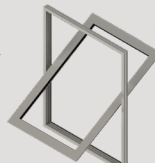
Top Hung



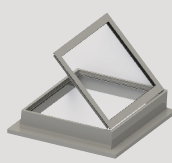
Side Hung



Sloping Roof Vent



Centre Pivot



Roof Vent

Certified and tested to EN 12101-2 2003 Annex G.



Applications



Environmental Ventilation

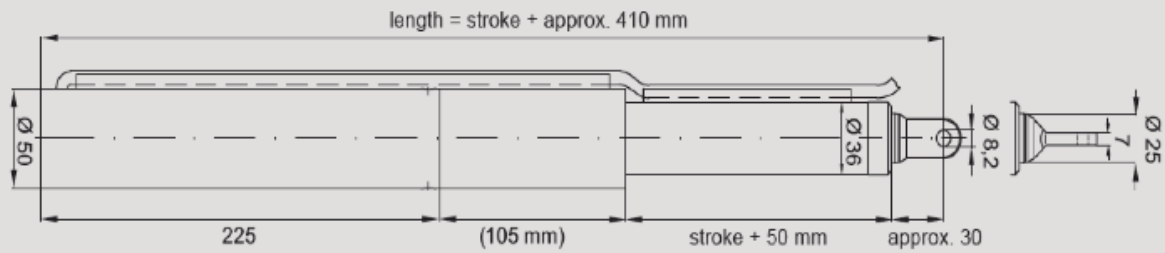


Smoke Ventilation



Please ensure the controllers have a minimum 1 second delay between switching if you are not using SE Controls products.

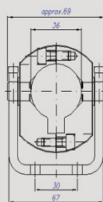
Technical Drawing



For further dimensions see the Product Codes table below
The AutoCAD drawing for this product can be found at www.secontrols.com

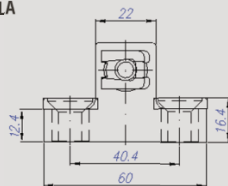
Brackets

Universal Bracket/ Lock Ring for TGLA 24 Linear Actuators



ABG65501000

Vent Bracket for TGLA Linear Actuators



ABG65609021

Product Codes

Stroke Y	Signal Giver
500 mm	*AAG02000501
600mm	*AAG02000600
750 mm	*AAG02000751
1,000 mm	*AAG02001001

Contact for details of availability for product codes starting with *

Technical Data

Actuator	TGLA 24 200 M1
Actuator Type	24V dc Motorised Linear Spindle
Voltage (all ± 6%)	24V dc
Amp Draw Current (with load)	3.0 A
Consumption (without load)	72W
Consumption (with load)	72W
Stroke	350/500/750/1,000 mm
Operating Speed	10.7 mm/sec for No Limit 9.2 mm/sec for Signal Giver
Ambient Operating Temp	-5°C to +75°C
IP Rating	IP 54
Thrust Force	2,000 N
Close Force	2,000 N
Switching	Electronic Limit Required
Type of Switch	Absorption
Standard Finish	Silver Anodised
Colour Option	Other RAL colours available on request
Flex Length	2 m
Flex Type	2 core Silicone 5 core Silicone
Flex Colour	White
Product Warranty	12 months from date of invoice ¹
Clamp Ring	Yes
U Bracket	Yes
Application	Environmental and Smoke Ventilation

¹ Commercial terms for each project will supersede this warranty information.
These actuators require control from a compatible low voltage unit such as OS2. Contact SE Controls for recommendations.