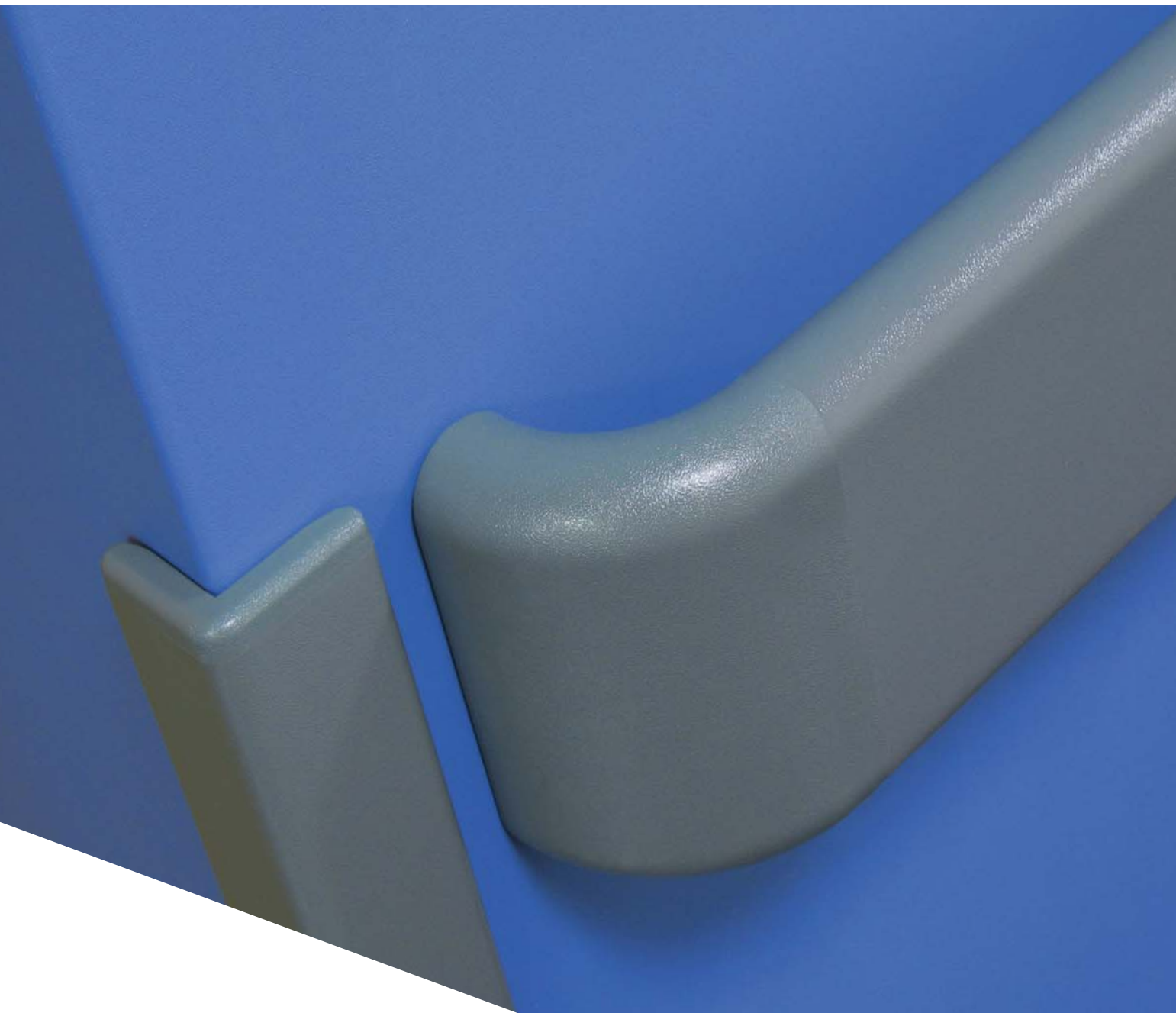




dFend wall protection specifier



Protecting against life's little knocks



Wall protection from SDS

The SDS wall protection system is designed to negate wear and tear in busy environments whilst setting new standards in both hygiene and durability.

For over 35 years SDS have specialized in wall, door and corner protection, supplying a wide range of sectors including Healthcare, Education, Recreation, Pharmaceutical and Retail. Through the years the concept of wall protection has become well established and the advantages of installing carefully designed profiles are increasingly apparent, resulting in reduced maintenance and

smart environments.

Today, SDS has move to the fore, introducing **dFend durablend** wall protection to the market. An ecologically sound, PVC-free, recyclable product which is supported by stringent fire ratings, **dFend durablend** is also impregnated with anti bacterial additives. It can truly be described as unique – offering protection at both the macroscopic and microscopic levels!

Now is the time to start installing this new generation of wall protection. Simply use this specifier or call SDS on 01420 543222.



Protecting against life's little knocks



*corner guards
dF CG55R
china blue*

*wallsheet
durablend
cobble*

*crashrail
dF CR200
china blue*

*bevel
top edge*



About dFend durablend™

dFend durablend from SDS is a very special product developed for use where tough, hygienic and ecologically sound wall protection systems are prerequisites.

Many of the SDS crashrails, wall protection components and doorsets are comprised from **dFend durablend** material, making them inherently resistant to damage and chemicals whilst still easy to clean and maintain to a high standard.

dFend durablend has certification to support its antimicrobial properties, and it remains free of toxic compounds. **dFend durablend** is also UV stable and

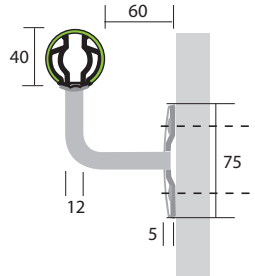
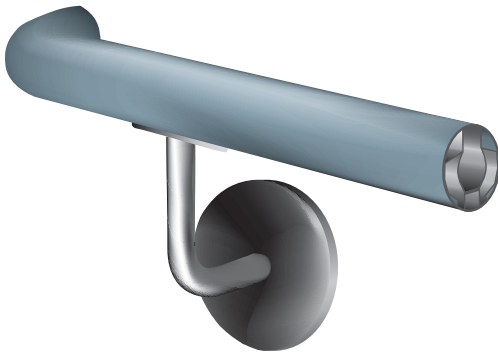
virtually eliminates the expansion and contraction problems associated with traditional PVC-based materials. Equally important, in the event of forced combustion, **dFend durablend** does not emit the life threatening toxic fumes produced by the ignition of PVC-based substrates. **dFend durablend** has been tested for its flame retardant properties and has a fire rating certified to the latest stringent European Standards.

This equates to a market leading range of PVC-free products encompassing all the essential characteristics expected from protection systems.

SDS dFend durablend™ rails



dF HR40



Impact resistant handrail.

40mm diameter tube with dFend durablend cover over aluminium retainer.

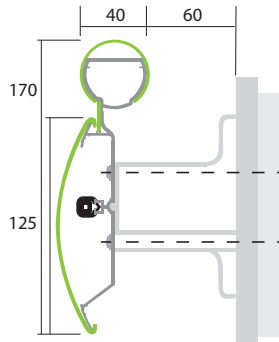
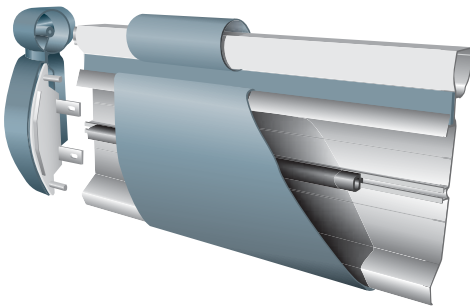
Return-to-wall end caps and external corners available.

Mounted on Stainless Steel brackets.

Suitable for use in corridors, entrances & ramps.



dF HR170



Heavy duty, combined hand/crashrail.

40mm diameter dFend durablend top hand rail and lower crashrail.

Internal bumper to absorb impact.

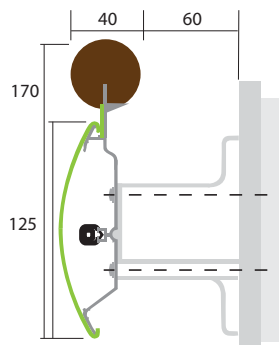
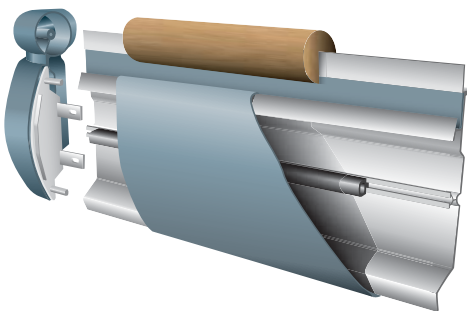
Return-to-wall end caps and external corners available.

Mounted on projecting brackets.

Suitable for use in busy circulation zones.



dF HRW170



Heavy duty, combined hand/crashrail.

40mm diameter timber top handrail with dFend durablend lower crash rail.

Internal bumper to absorb impact.

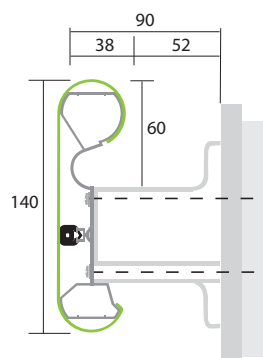
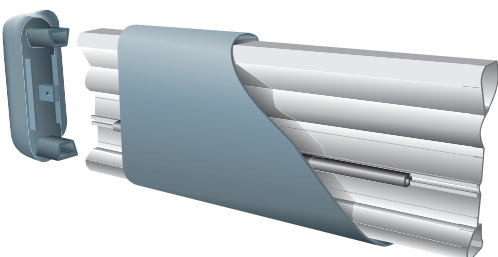
Return-to-wall end caps and external corners available.

Mounted on projecting brackets.

Suitable for use in busy circulation zones.



dF HR140



Heavy duty combined hand/crashrail with dFend durablend one piece cover.

Internal bumper to absorb impact.

Return-to-wall end caps and external corners available.

Mounted on projecting brackets.

Suitable for use in corridors.

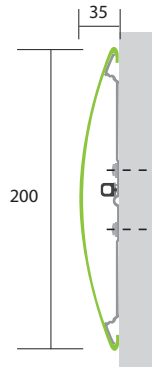
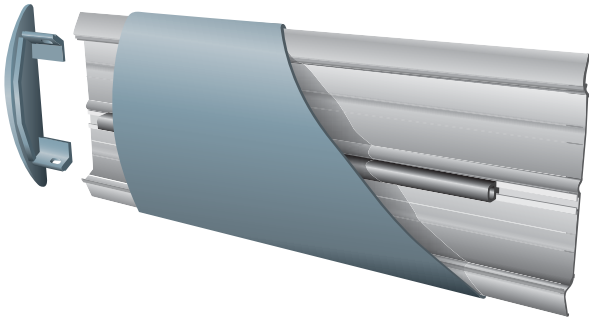


Protecting against life's little knocks

SDS dFend durablend™ crashrails



dF CR200



Heavy duty, slimline, dFend durablend curved profile crashrail.

Aluminium retainer with integral bumper for shock absorption.

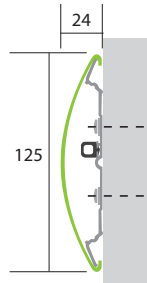
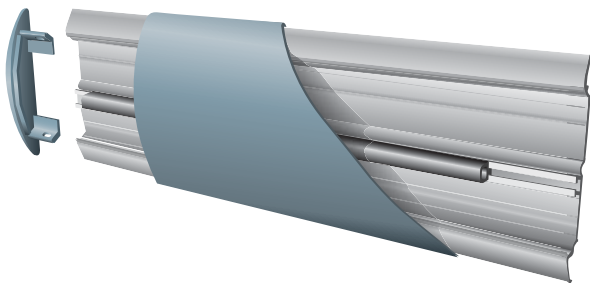
End caps and external corners available.

Option: Can also be mounted on projecting bungs.

Suitable for corridor protection.



dF CR125



Heavy duty, slimline, dFend durablend curved profile crashrail.

Aluminium retainer with integral bumper for shock absorption.

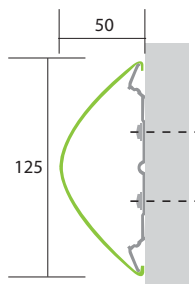
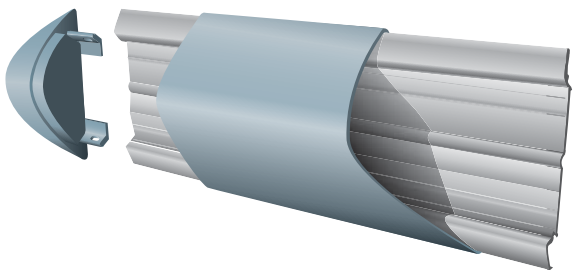
End caps and external corners available.

Option: Can also be mounted on projecting bungs.

Suitable for corridor protection.



dF BG125



Medium duty, dFend durablend curved deep profile crashrail.

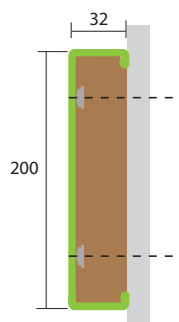
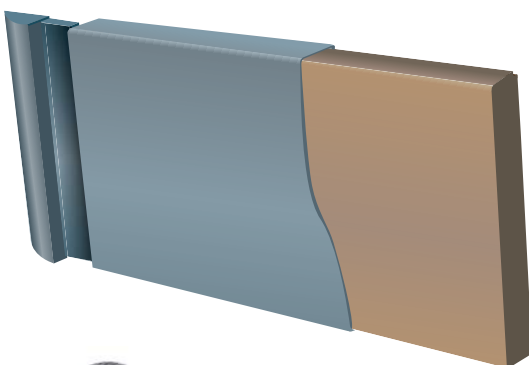
Aluminium retainer.

End caps and external corners available.

Suitable for general use.



dF SRW200



Severe duty dFend durablend crashrail.

Wall fitted to a continuous MDF core with dFend durablend clip on cover.

Return-to-wall end caps and external corners available.

Suitable for general use.

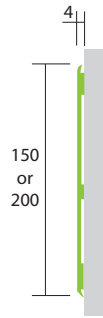
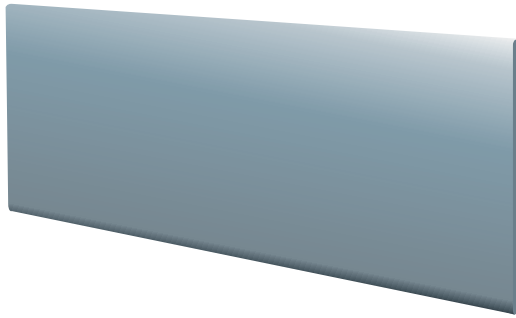


Protecting against life's little knocks

SDS dFend durablend™ protection



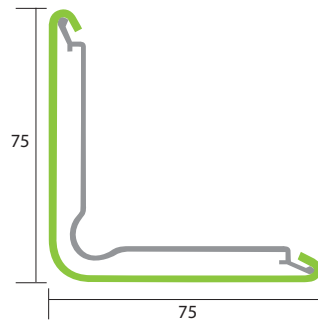
dF RR150 / 200



Light duty dFend durablend rub rails.
 Available in 150mm and 200mm depths.
 Scratch and impact resistant with edges cranked to wall.
 Installed using self adhesive foam tape and construction approved adhesive.
 Internal and external corners available.
 Suitable for general use.



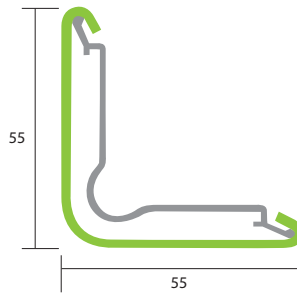
dF CG75



Heavy duty corner guard.
 dFend durablend cover over aluminium retainer.
 Designed to flex on impact.
 90° and 135° options available.
 End caps top and bottom.



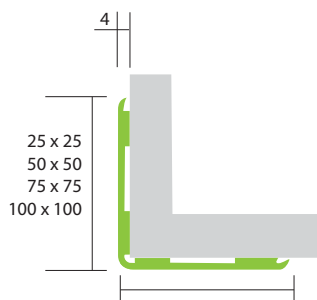
dF CG55



Heavy duty corner guard.
 dFend durablend cover over aluminium retainer.
 Designed to flex on impact.
 End caps top and bottom.



dF SCG25 / 50 / 75 / 100



Medium duty corner guard.
 Stick on dFend durablend corner angle.
 Installed using self adhesive foam tape and construction approved adhesive.
 Suitable for use where flexibility is required.

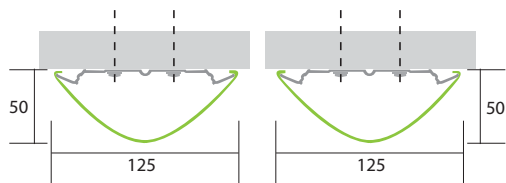
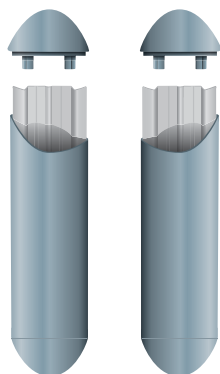


Protecting against life's little knocks

SDS dFend durablend™ protection



dF BL125



Medium duty bed locators for mounting in pairs in vertical orientation.

dFend durablend one piece cover fitted over aluminium backplate.

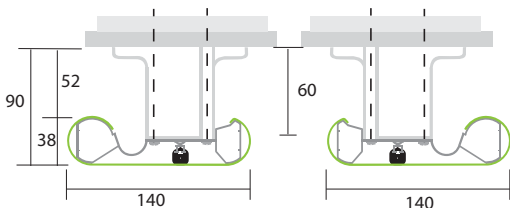
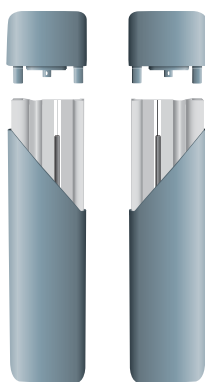
End caps supplied.

Standard height 0.75m.

Alternative projections available.



dF BL140



Heavy duty bed locators for mounting in pairs in vertical orientation.

dFend durablend one piece cover.

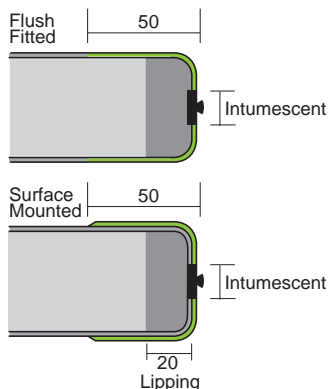
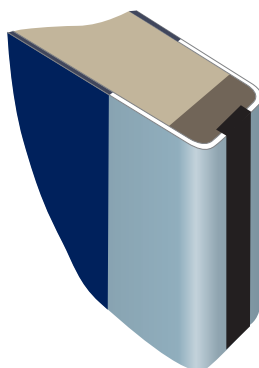
Internal bumper flexes to absorb impact.

End caps supplied.

Standard height 0.75m.



dF DEP



Heavy duty door edge protector.

dFend durablend cover flush fitted to door cladding or surface mounted.



dFend Wall Sheets



dFend durablend wall sheets with stippled finish.

Sheet size 1.5mm x 1220mm x 2440mm.

Bevelled edges optional.

Colour matched silicone for vertical joints.

Attached to wall with dFend durablend adhesives.



Protecting against life's little knocks

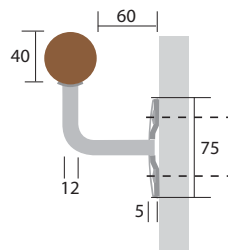
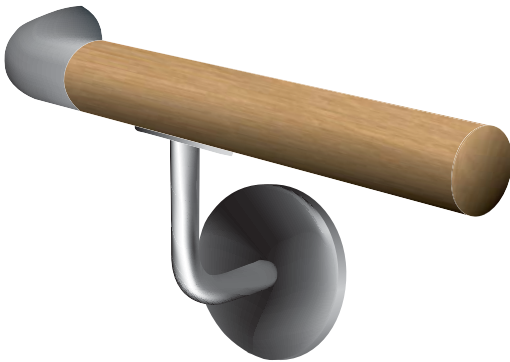
SDS timber & stainless steel



SDS supplies high quality timber handrails in beech, maple, oak and ash to give your project a distinctive appearance. We have a range of stainless steel or timber return-to-wall end caps and a selection of handrail mounting options. SDS can offer customised stairwell rails and rails with LEDs inset. For further details please contact us on 01420 543222.

The SDS stainless steel options provide an alternative stylish and practical system to SDS dFend durablend rails and protectors. To complement our products Grade 304 (Grade 316 available as an option) stainless steel wall sheeting can be supplied.

dF HWT40



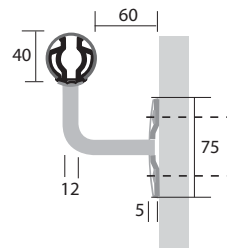
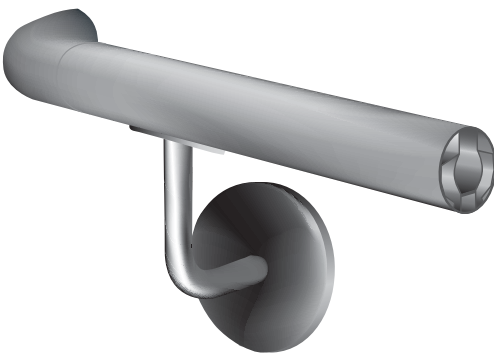
Medium duty timber handrail on stainless steel mounting brackets.

Available with stainless steel corner and return-to-wall ends.

Suitable for use in general circulation areas.

Confirm timber choice with SDS.

dF HS40

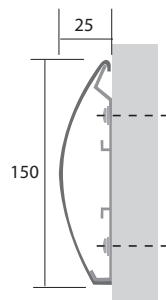
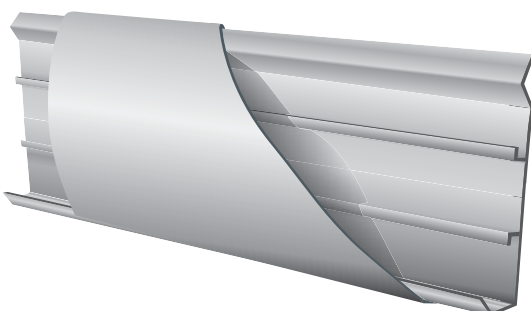


Medium duty stainless steel handrail on stainless steel mounting brackets.

Stainless steel corner and return-to-wall ends available.

Suitable for use in general circulation areas.

dF CSSR150



Extreme duty brushed stainless steel crashrail.

Wall fitted to a continuous aluminium retainer.

End caps pre-welded to schedule lengths.

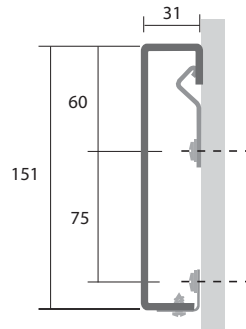
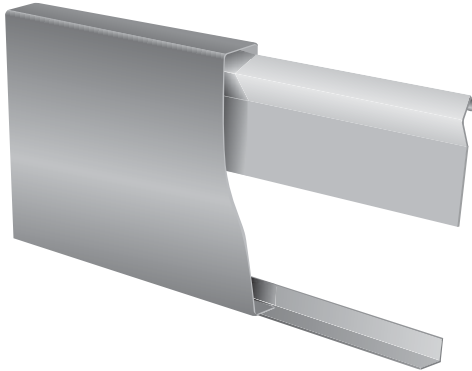
Suitable for use in ultra-clean areas.



Protecting against life's little knocks

SDS stainless steel protection

dF SR150



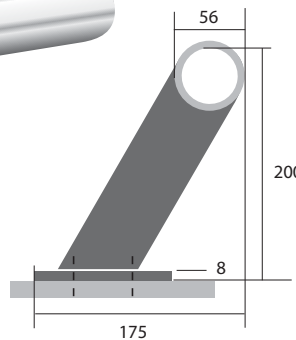
Heavy duty dull polished, stainless steel crashrail.

Wall fitted to a continuous aluminium retainer.

End caps pre-welded to schedule lengths.

Suitable for use in ultra-clean areas.

dF FSSR

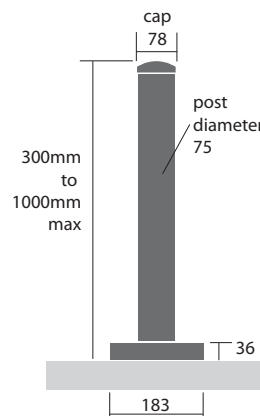
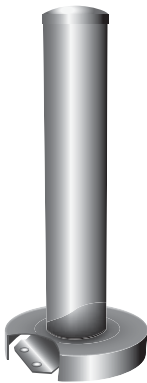


Heavy duty, satin finish, stainless steel tubular floor mounted rail on stainless steel brackets.

Stainless steel corners, end caps, stop and return-to-wall available.

Recommended protection in corridors with fully glazed walls.

dF PSS

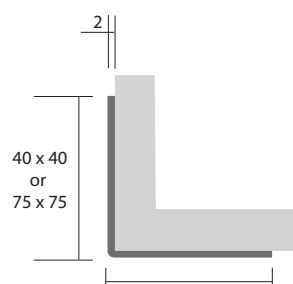


Heavy duty stainless steel posts.

Floor mounted with concealed fixings.

Suitable for protecting corners, doors and traffic management.

dF SG40 / 75



Heavy duty stainless steel corner guard.

2.0mm thick – surface mounted.

Installed using construction approved adhesive or pre-drilled for mechanical fixings.

40mm and 75mm options available.




Protecting against life's little knocks

the SDS dFend durablend™ protection specifier

Crashrail 170

NOTES:
 For a full specification please include all categories as shown.
 Where custom items are required please provide full drawings and specifications.
 Due to the limitations of the printing process, actual colours may vary slightly from chart.
 For an accurate colour match please ask SDS Protection for samples.

Drawing Ref	(project refs)
Manufacturer	SDS Protection Ltd. Tel: 01420 543222
Material	dFend durablend™  or Stainless Steel thickness: 1.5mm
Rail/Protection Ref	select type
Colour	choose from colour chart or Stainless Steel
Finish as delivered	factory


Example Specification


Crashrail 170

Drawing Ref	Sample 010806
Manufacturer	SDS Protection Ltd Tel: 01420 543222
Reference	dF CR200
Colour/Finish	mushroom
Fixings	As per manufacturers recommendations
Finish as delivered	Factory

NOTES *Extra projection*

Sheet samples are available on request - t: 01420 543222

 **dFend durablend™ colour chart**

snowflake	chalk	mushroom	buttermilk	lupin
denim	china	midnight	danube	peppermint
jade	aqua	gunpowder	cobble	flint
faux metal	Note: We are happy to colour match to any RAL or Pantone colour subject to minimum quantity/leadtime.			

the SDS timber rail specifier

Example Specification

Crashrail 170

Drawing Ref	Sample 010806
Manufacturer	SDS Protection Ltd Tel: 01420 543222
Reference	HWT40
Timber	european beech
Diameter of rail	40mm
Fixings	As per manufacturers recommendations
Finish as delivered	Factory

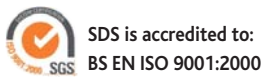
NOTES *Stop end caps 25mm from architraves*

Timber Rail Options

european beech	european maple	oak	ash
----------------	----------------	-----	-----

- Diameter 40mm to 45mm
- Wall distance to the inside edge of the handrail 60mm

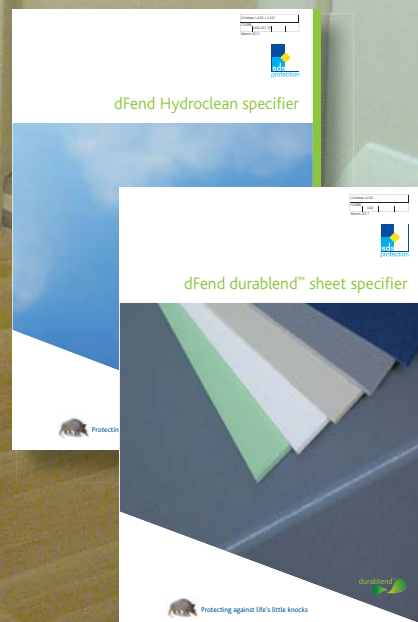
Disclaimer: SDS Protection Ltd reserves the right to make changes to designs or specifications, or to withdraw any design without notice



CHAS accredited



Protecting against life's little knocks



Wall Sheet Protection – Use in conjunction with Crashrails



SDS **dFend durablend** crashrails and bump rails perform an excellent role in rebuffing impact between the walls of a building and mobile apparatus or pedestrians. Coupled with these rails, it is recommended that the specifier insists on **dFend durablend** wall sheeting, which complements the crashrail choice while playing an unobtrusive but effective role in combating bacterial growth. Ensure that your next project is well designed by using the SDS sheet specifier.

SDS Protection solutions



SDS Protection dFendor

dFend durablend sheeting can be used on the SDS range of dFend doors and doorsets.



SDS Protection Hydroclean

dFend hygienic sheeting for protecting walls and doors.



SDS Protection dFend durablend™ sheeting

dFend durablend sheeting for wall protection.



Protecting against life's little knocks



SDS Protection Limited
Wyck Crossroads
Binsted Road | ALTON
HANTS | GU34 4NT
T: 01420 543222
F: 01420 543355

sales@sdsprotection.co.uk
www.sdsprotection.co.uk