

Schlüter®-SHOWERPROFILE-S / -R

Drainage
Floor level showers

14.1

Product data sheet

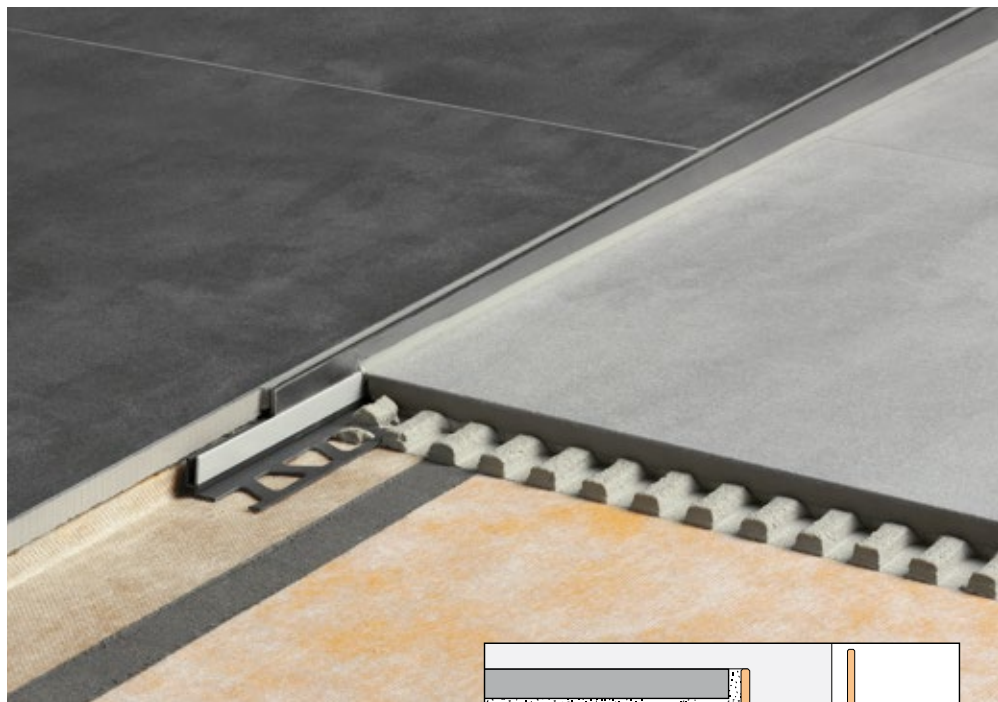
Application and Function

Schlüter®-SHOWERPROFILE-S is a two part profile with a tapered edge, designed to cover adjoining tile edges that become exposed as the shower floor slopes to accommodate drainage to the Schlüter®-KERDI-LINE. The tapered profile features a visible surface of brushed stainless steel and a fleece fabric on the reverse for bonding with the tile adhesive. It is designed to be inserted into the U shaped groove of the matching hard PVC support profile. The profile can be used for lateral transitions to the wall or the adjoining floor.

The PVC support profile is available in 6 different thicknesses from 3 mm to 22 mm to match the thickness of the tiles installed in the floor of the shower. The tapered profile is available in longer sections of 120 and 200 cm, with a height of 6 mm or 10 mm at the narrow end. It features a slope of 2% (i.e. the height changes by 2 mm across every 10 cm of length). The profile is simply cut to the required height and length at the narrow and broad ends.

In addition, the height can be further adjusted by inserting the profile into the U shaped support section to various depths.

Schlüter®-SHOWERPROFILE-R is a two part wall transition profile made of brushed stainless steel for covering the exposed wall area where the floor slopes down to a perimeter linear drain. A fleece fabric is laminated on the reverse of the profile for bonding with the tile adhesive. The two part design of Schlüter®-SHOWERPROFILE-R can be seamlessly adjusted to any height between 23 mm and 45 mm (available in two versions). The profile is available in lengths of 100 cm and 140 cm and can be cut to the desired length.

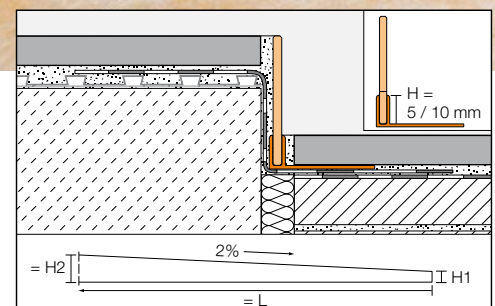


Material

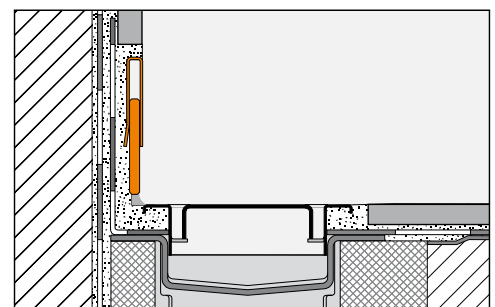
Schlüter®-SHOWERPROFILE-S and -R are made of stainless steel V4A (material no. 1.4404 = AISI 316L) and have a fleece fabric laminated on the reverse for bonding with the tile adhesive. The support profile of Schlüter®-SHOWERPROFILE-S is made of rigid recycled PVC. The visible surface of the profile is covered with a protective foil.

Material properties and areas of application:

The suitability of the profiles must be verified based on the anticipated chemical and mechanical stresses. The tapered profile Schlüter®-SHOWERPROFILE-S of stainless steel V4A (material no. 1.4404 = AISI 316L) is particularly suitable for high



Schlüter®-SHOWERPROFILE-S



Schlüter®-SHOWERPROFILE-R



mechanical impact or special exposure to chemicals. However, even stainless steel is not resistant to all chemical stresses, and may be affected by hydrochloric and hydrofluoric acid or certain chloride and brine concentrations, which may be present in detergents or swimming pools. Special anticipated stresses should therefore be verified in advance.

Installation

The protective foil must be removed before installation.

Schlüter®-SHOWERPROFILE-S

1. After cutting to length, press the trapezoid perforated anchoring leg of the support profile into the previously applied tile adhesive on the floor and align.
2. Measure the required length and height of the tapered profile (front: lowest height; rear: greatest height). Keep in mind the insertion depth into the U shaped groove.
3. Cut the tapered profile to size for the required height.

Note: Simply cut the profile at the narrow end and/or broad end to cut it to the required height and length. Apply tile adhesive to the back of the cut tapered profile and insert it into the U shaped support profile. Press it in place and align it flush with the floor or wall.

Schlüter®-SHOWERPROFILE-R

1. Determine the length and height of the exposed wall area to be covered and cut the profile to the required length.
2. Connect the two components of Schlüter®-SHOWERPROFILE-R to achieve the desired height.
3. Apply a sufficient amount of adhesive to the fleece fabric, which is laminated on the reverse of the profile, and set the profile in place so that it is flush with the tiles.

Notes

Schlüter®-SHOWERPROFILE-S and -R require no special maintenance or care. The profiles can be cleaned along with the covering, using suitable detergents. The visible surfaces of the profiles can be polished with commercial chrome polishing products. Stainless steel surfaces exposed to the environment or aggressive substances should be cleaned periodically using a mild household cleaner. Regular cleaning not only maintains the neat appearance of stainless steel, but also reduces the risk of corrosion. All cleaning agents must be free of hydrochloric and hydrofluoric acid. Avoid contact with other metals, such as regular steel, to prevent corrosion. This also includes installation tools such as trowels or steel wool, e.g. for the removal of mortar residue. Do not use abrasive cleaning agents on the sensitive surfaces. The stainless steel cleaning polish Schlüter®-CLEAN-CP may be used if necessary.

Product Overview

Schlüter®-SHOWERPROFILE-SA / -SB

EB = Brushed stainless steel V4A
Supplied lengths: 1.2 m, 1.6 m and 2.0 m

Tapered profile H1= mm	SA	SB
	6	10
EB	•	•
Support profile H = mm	SA	SB
5	•	
10		•
12.5		•

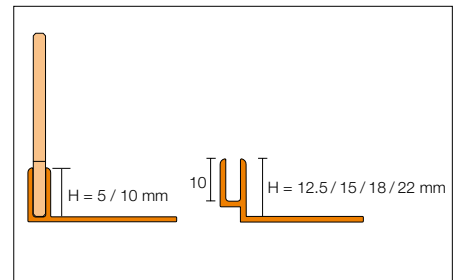
Note:
Tapered profile 120 cm H2 = SA: 30 mm / SB: 34 mm
Tapered profile 160 cm H2 = SA: 38 mm / SB: 42 mm
Tapered profile 200 cm H2 = SA: 46 mm / SB: 50 mm

Support profiles of the Schlüter®-DILEX-RF series are available in heights of 15, 18 and 22 mm upon request.

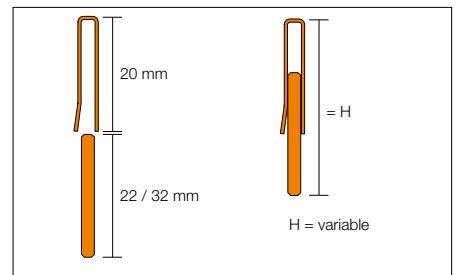
Schlüter®-SHOWERPROFILE-R

EB = brushed stainless steel
Supplied lengths: 1 m and 1.4 m

H = mm	23 – 35	33 – 45
EB	•	•



Schlüter®-SHOWERPROFILE-S



Schlüter®-SHOWERPROFILE-R

Text template for tenders:

___ units of Schlüter®-SHOWERPROFILE-S as a two part tapered profile made of brushed stainless steel V4A with a fleece fabric laminated on the reverse for bonding with the tile adhesive and a matching hard PVC support profile with U shaped insertion groove, to be provided and professionally installed while observing the manufacturer's instructions.

Profile type:
 SHOWERPROFILE-SA
 SHOWERPROFILE-SB
 Profile length:
 1.2 m 1.6 m 2.0 m
 Item no: _____
 Material: _____ / m
 Labour: _____ / m
 Total price: _____ / m

___ units of Schlüter®-SHOWERPROFILE-R as a two part wall transition profile made of brushed stainless steel V4A with a fleece fabric laminated on the reverse for bonding with the tile adhesive, to be provided and professionally installed while observing the manufacturer's instructions.

Profile type:
 SHOWERPROFILE-R A23EB
 SHOWERPROFILE-R A33EB
 Profile length:
 1.0 m
 1.4 m
 Material: _____ / m
 Labour: _____ / m
 Total price: _____ / m