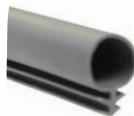
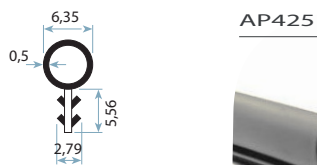
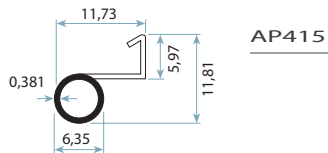
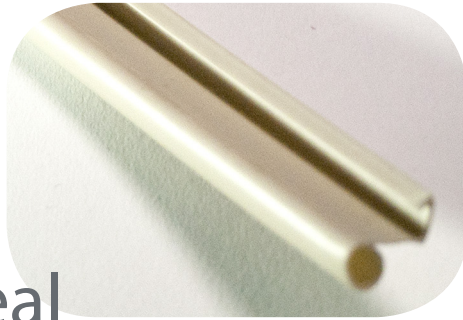


Aptus (AP): foam kerf seal



Code	Colour	Fixing Width	Fixing Depth	Gap Seal	Roll
		mm	mm	mm	size m
AP415BE	Beige	2.40	6.00	0.40 - 6.00	381
AP415BLK	Black	2.40	6.00	0.40 - 6.00	381
AP425BLK	Black	0.60	5.60	0.50 - 5.90	381
AP425BE	Beige	0.60	5.60	0.50 - 5.90	381
AP425WH	White	0.60	5.60	0.50 - 5.90	381

*Bronze also available



Head Office:

44 Riverside Road Chipping Norton NSW 2170
Ph: +61 2 8707 2000 Fax: +61 2 8707 2070
Email: salesnsw@schlegel.com

Victoria:

Factory 16 / 2-4 Damian Court Dandenong VIC 3175
Ph: +61 3 9793 4100 Fax: +61 3 9793 4566
Email: salesvic@schlegel.com

Queensland:

2 / 17 Lawrence Drive Nerang QLD 4211
Ph: +61 7 5527 3999 Fax: +61 7 5527 3393
Email: salesqld@schlegel.com

Western Australia:

3 / 45 Truganina Road Malaga WA 6090
Ph: +61 8 9248 4500 Fax: +61 8 9248 4855
Email: saleswa@schlegel.com

New Zealand:

Burrett Business Park, 10d Burrett Ave
Penrose, Auckland 1061
Ph: +64 9 478 4001 Fax: +64 9 478 4002
Email: salesnz@schlegel.com

Care has been taken to ensure that the contents of this publication are accurate, but Schlegel and its subsidiary companies do not accept responsibility for errors or for information that is found to be misleading. Suggestions for, or description of, the end use or application of products or methods of working are for information only. All dimensions are in mm and are nominal. Schlegel reserve the right to change specification without prior notice.

Schlegel's names and logos and all related trademarks (including 'SCHLEGEL', 'SCHLEGEL Red Square Logo', 'Red Square Logo', trade names, and other intellectual property) are the property of Schlegel Acquisition Holdings Limited trading as Schlegel International and cannot be used without its express prior written permission. All rights reserved.

© Schlegel Acquisition Holdings Limited trading as Schlegel International 2016.