



## FIRE GATHER

### Features and Benefits

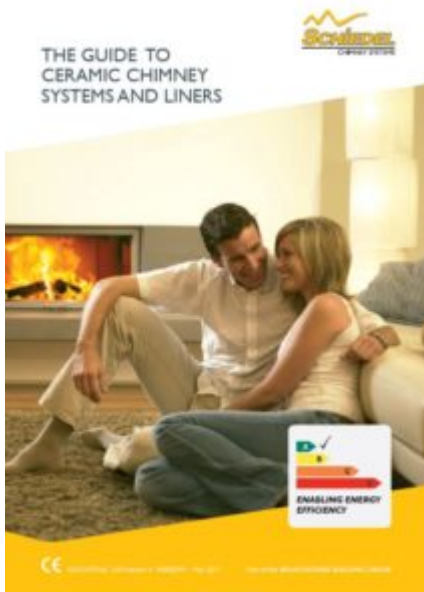
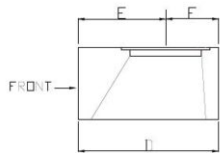
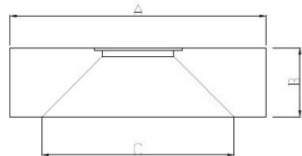
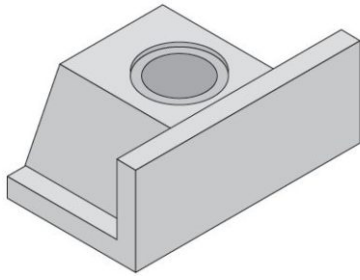
- Light Expanded Clay Aggregate Concrete
- Reinforced
- Connects openfire to flue
- Load Bearing
- Easy to use

**Categories:** [Ceramic Flue Liners Components](#), [Schiedel Swift Components](#), [Clay / Ceramic Liners](#), [Gathers](#)

## VARIATIONS

SKU	INT MM	MODEL	A	B	C	D	E	F
130698	200	NA	NA	NA	NA	NA	NA	NA
130699	225	C16	800	225	600	440	275	165
131200	250	C17	1000	300	800	550	275	275
131201	300	C18	1000	300	800	550	322	228

## GALLERY IMAGES



## Approvals

Schiedel Ceramic Liners are CE Certified to EN 1457-1 & 2 TÜV 0780 CPD 131086 with the following designations:

### High Temperature Applications



EN 1457-1  
A1 N1 (T600 N1 G)

**Low Temperature Applications**

EN 1457-2  
B4 N1 (T400 N1 WC O)  
D4 N1 (T200 N1 WC O)\*

\* When used on T200 rated low temperature systems, the liner system should be straight and fully ventilated.