

system installation advice

system 120

clip-in tiles, concealed grid

system 130

lay-in tiles, exposed grid

system 150

clip-in tiles, concealed grid

system 200

hook-on tiles, concealed grid

system 205

hook-on tiles, concealed grid

system 330

lay-in tiles, profile suspension

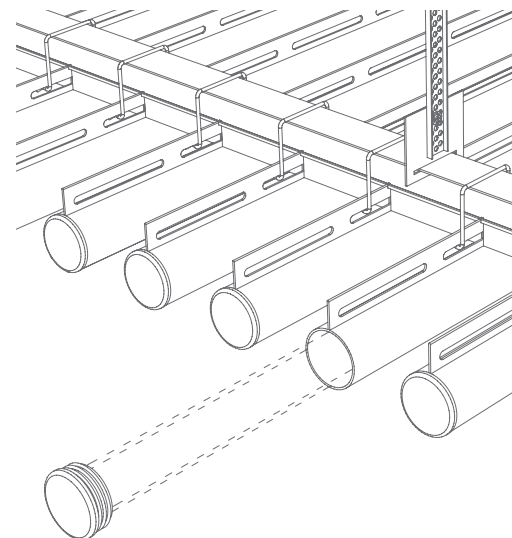
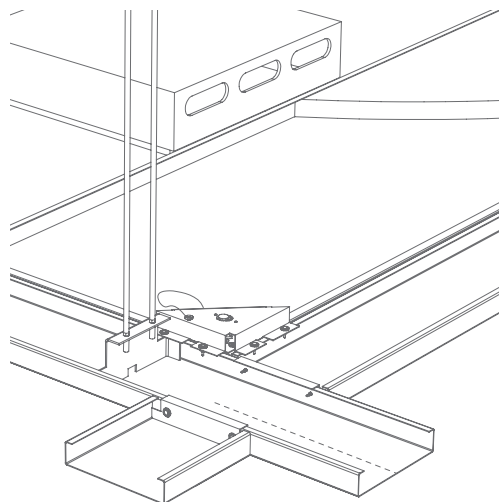
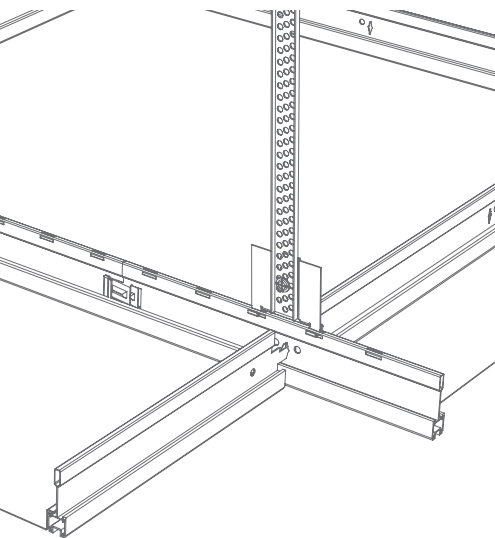
tubeline

tubular linear ceiling

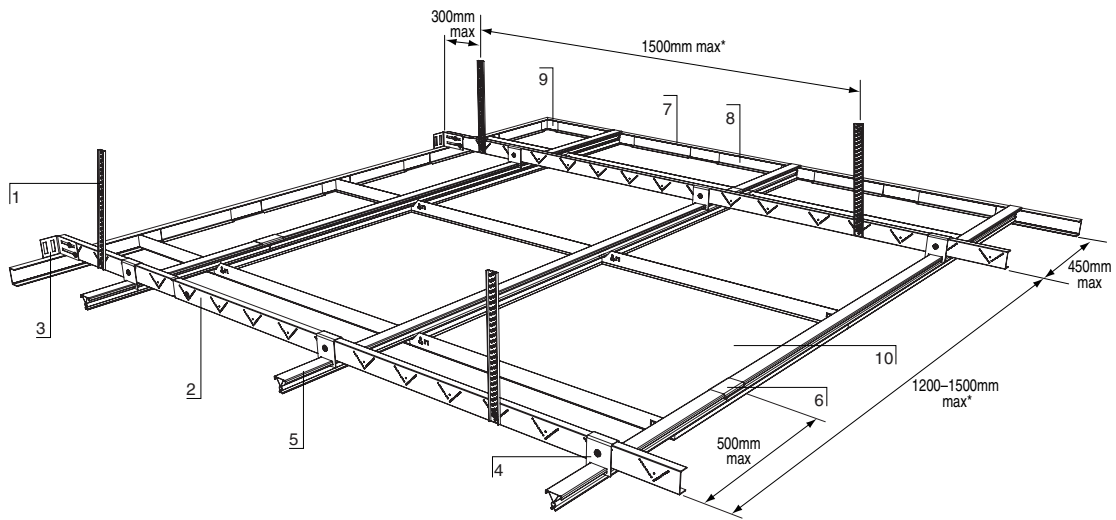
trucell

aluminium open cell ceiling

estimating quantity guide



system 120 installation advice



- 1] Emac Hanger 2] Emac Channel 3] Emac Wall Anchor 4] Emac Spring Tee to Channel Bracket 5] SAS Spring Tee
 6] Emac Spring Tee Splice 7] Perimeter Trim 8] Perimeter Wedge 9] Corner splice 10] System 120 Tile

Refer to components section page 145 for full description and item numbers.

Notes

Maximum suspension centres should only be considered for lightweight* installations.

Emac hangers should be installed a maximum of 300mm from the end of a run of Emac channel and 300mm from the joint between these channels. Where two spring tees meet and are spliced together, an Emac channel should be installed within 500mm.

It is considered good practice to stagger joints in supporting structures.

Additional Loads

When supporting services such as downlights, speakers, detectors and other mechanical and electrical services, the maximum load applied to the ceiling tile must not exceed 2.5kg including spreader yokes if applicable.

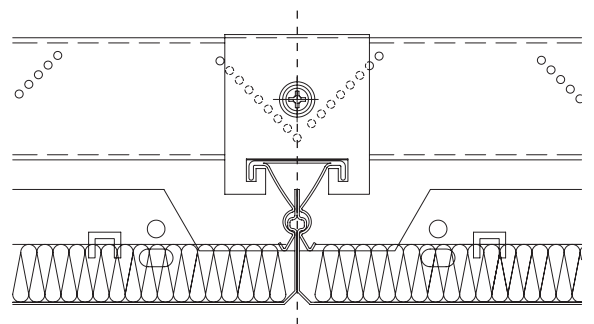
The SAS pattress system allows the integration of heavier items by distributing the load back to the Emac Spring Tee. The pattress can accommodate a load of up to 6kg and are available in sizes to suit all standard modules.

For load greater than 6kg we recommend independent suspension.

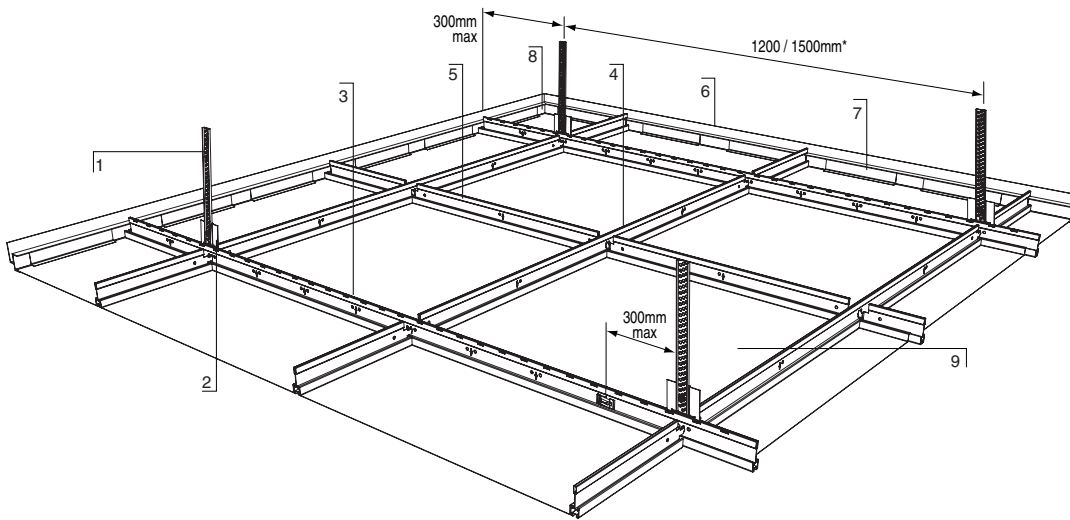
Pattresses are available in sizes to suit all standard modules.

*"Lightweight" meaning base system only such as fleece or pad backing. Where the ceiling supports the load of services or for acoustically upgraded ceilings, the suspension should be installed to minimum dimensions shown above. Suspension centres should always be considered when applying additional loads.

For further advice please contact the SAS technical department.



Bracket fixed to \bar{C} of setting-out Vs for accurate setting-out of ceiling to 100mm increments.



- 1] Emac Hanger 2] Emac Hanger Bracket 3] Main Runner 4] Double Module Cross Tee 5] Single Module Cross Tee
- 6] Perimeter Trim 7] Perimeter Wedge 8] Corner Splice 9] System 130 Tile

Refer to components section page 146 for full description and item numbers.

Notes

Hangers installed at 1500mm centres should be considered for lightweight* installations only. SAS Emac hangers must be used in conjunction with Emac hanger brackets for installation at 1500mm centres.

Emac hangers should be installed a maximum of 300mm from the edge of the system. Where two main runners are clipped together, an Emac hanger should be installed within 300mm.

It is considered good practice to stagger joints in supporting structures.

Additional Loads

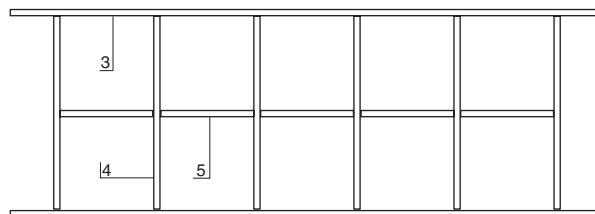
A lightweight* system can support additional loads such as services up to a limit of 3kg. This limit is based on a point or uniformly distributed load over 0.36m², positioned a minimum of 1000mm apart. This should be considered for lightweight* installations only.

*"Lightweight" meaning base system only such as fleece or pad tile backing. Where a ceiling supports the load of services or for acoustically upgraded systems, Emac hanger centres should be installed at 1200mm centres. Hanger centres should always be considered when applying additional loads.

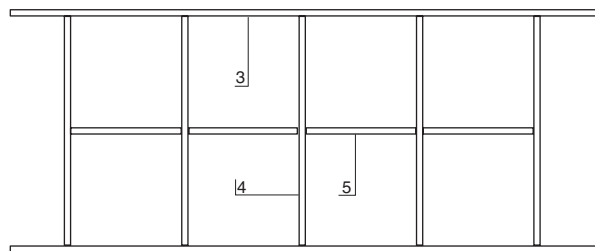
For further advice please contact the SAS technical department.

Configuration Guide

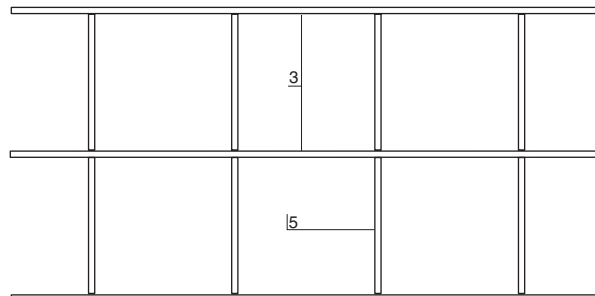
500x500mm Module



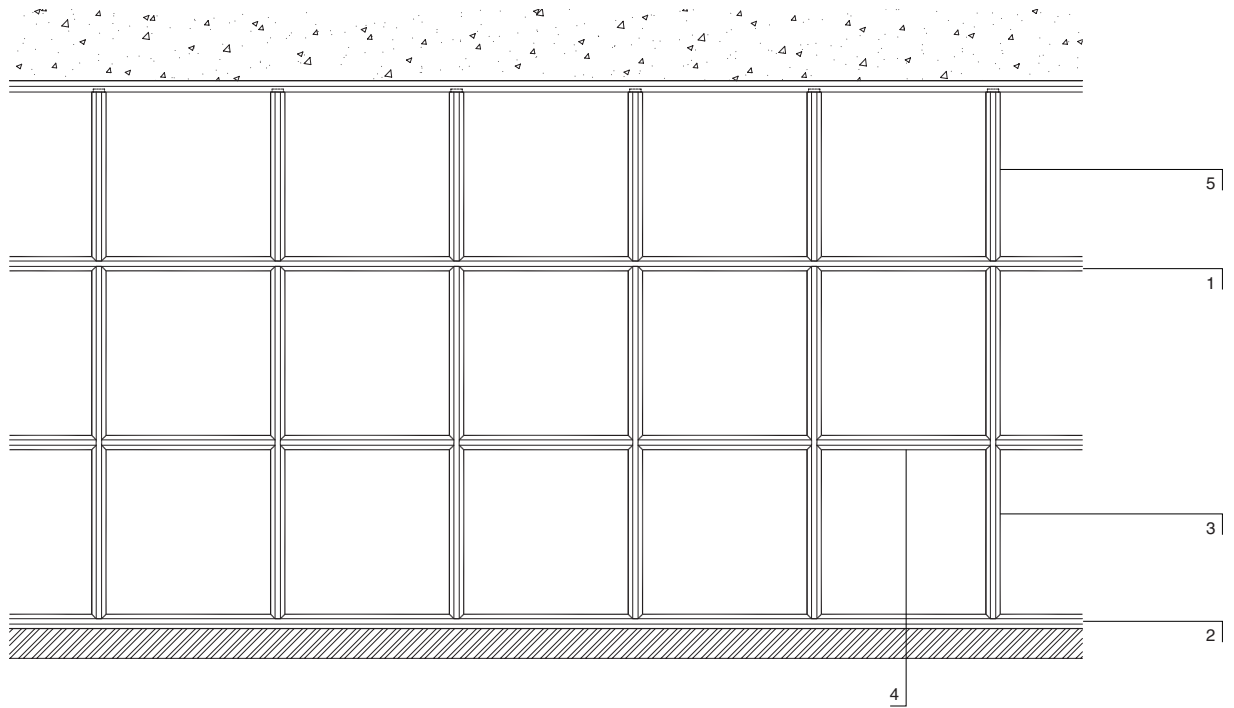
600x600mm Module



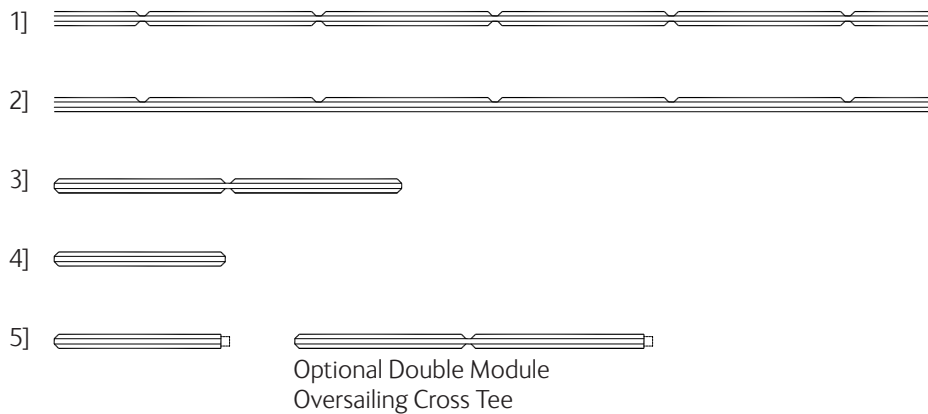
750x750mm Module



system 130 installation advice, alugrid-q



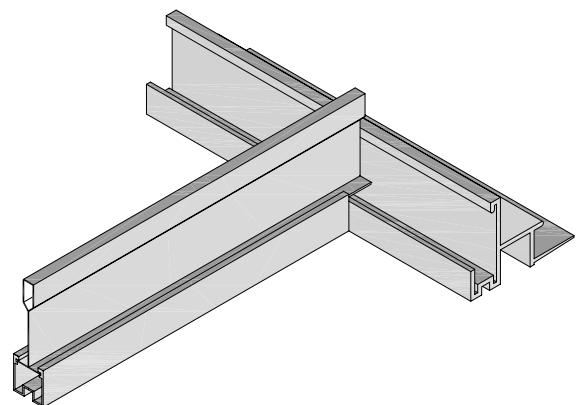
1] Alugrid-Q Main Runner 2] Alugrid Main Runner (bird's mouths one side) 3] Double Module Cross Tee 4] Single Module Cross Tee
5] Single Module Oversailing Cross Tee



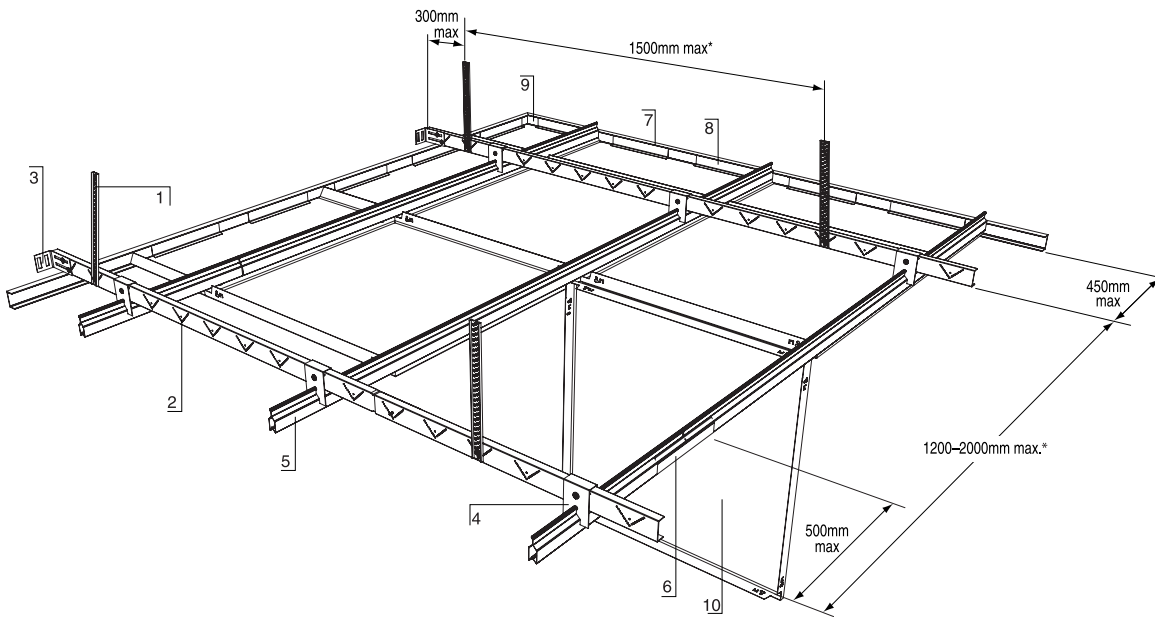
System 130 Alugrid-Q main runner (1) is supplied as standard with bird's mouths both sides to suit module sizes. Alugrid-Q main runner can be supplied with bird's mouths one side for individual project requirements (2).

Alugrid-Q Cross Tees are supplied as standard with arrowhead detail each end (4). Double modules cross tees are additionally supplied with a bird's mouth detail both sides (3).

Alugrid Cross Tees, both single and double module, can be supplied as "oversailing" cross tees (5). Oversailing Cross Tees have a longer tee runner enabling full tiles to be used at the perimeter. The Oversailing Cross Tees are integrated and supported by a range of SAS perimeter trims.



Oversailing Cross Tee and Perimeter detail



- | | | | | | |
|-------------------|--------------------|---------------------|---------------------------------|------------------|---------------------|
| 1] Emac Hanger | 2] Emac Channel | 3] Emac Wall Anchor | 4] Omega Bar to Channel Bracket | 5] SAS Omega Bar | 6] Omega Bar Splice |
| 7] Perimeter Trim | 8] Perimeter Wedge | 9] Corner Splice | 10] System 150 Tile | | |

Refer to components section page 149 for full description and item numbers.

Notes

Maximum suspension centres should only be considered for lightweight* installations.

Emac hangers should be installed a maximum of 300mm from the end of a run of Emac channel and 300mm from the joint between these channels. Where two omega bars meet and are spliced together, an Emac channel should be installed within 500mm.

It is considered good practice to stagger joints in supporting structures.

Additional Loads

When supporting services such as downlights, speakers, detectors and other mechanical and electrical services, the maximum load applied to the ceiling tile must not exceed 2.5kg including spreader yokes if applicable.

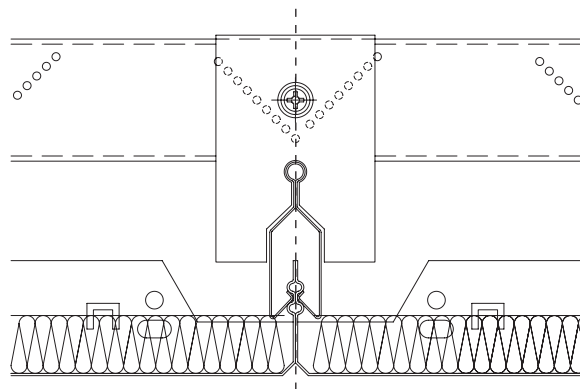
The SAS pattress system allows the integration of heavier items by distributing the load back to the Emac Omega Bar. The pattress can accommodate a load of up to 6kg and are available in sizes to suit all standard modules.

For load greater than 6kg we recommend independent suspension.

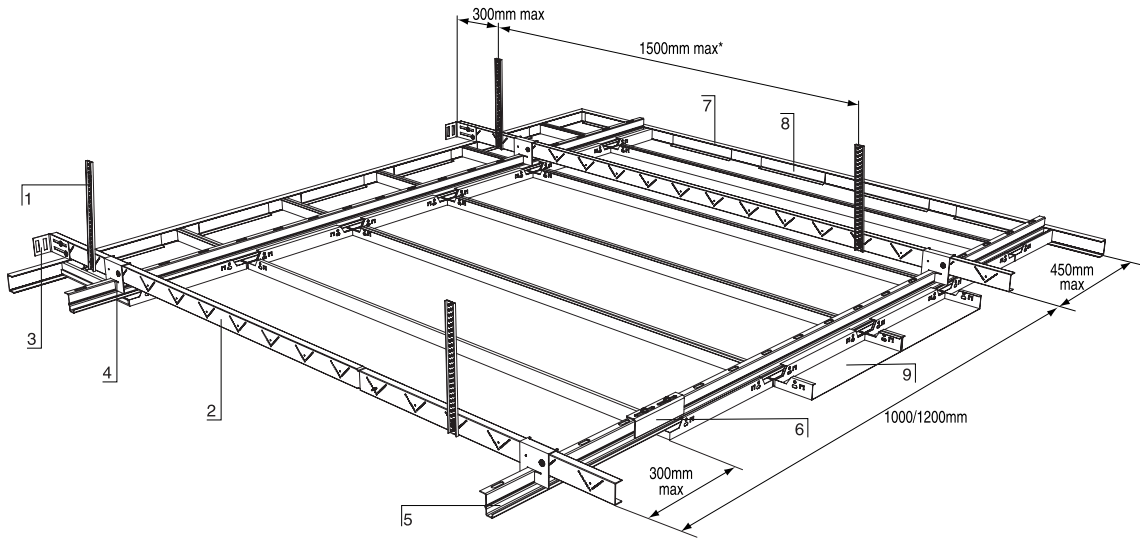
Pattresses are available in sizes to suit all standard modules.

*"Lightweight" meaning base system only such as fleece or pad backing. Where the ceiling supports the load of services or for acoustically upgraded ceilings, the suspension should be installed to minimum dimensions shown above. Suspension centres should always be considered when applying additional loads.

For further advice please contact the SAS technical department.



Bracket fixed to C_L of setting out Vs for accurate setting-out of ceiling to 100mm increments.



- | | | | | |
|-----------------|-------------------|---------------------|-----------------------------|----------|
| 1] Emac Hanger | 2] Emac Channel | 3] Emac Wall Anchor | 4] J-Bar to Channel Bracket | 5] J-Bar |
| 6] J-Bar Splice | 7] Perimeter Trim | 8] Perimeter Wedge | 9] System 200 Tile | |

Refer to components section page 150 for full description and item numbers.

Notes

Emac hangers should be installed a maximum of 300mm from the end of a run of Emac channel and 300mm from the joint between these channels. Where two J-bars meet and are spliced together, an Emac channel should be installed within 300mm.

For planks longer than 2000mm, the distance between Emac channels should be reduced to 1000mm max.

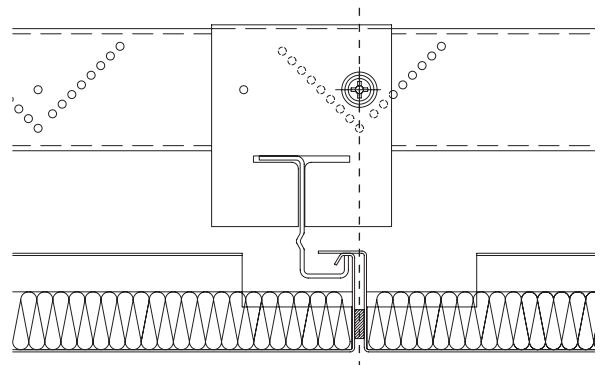
It is considered good practice to stagger joints in supporting structures.

Additional Loads

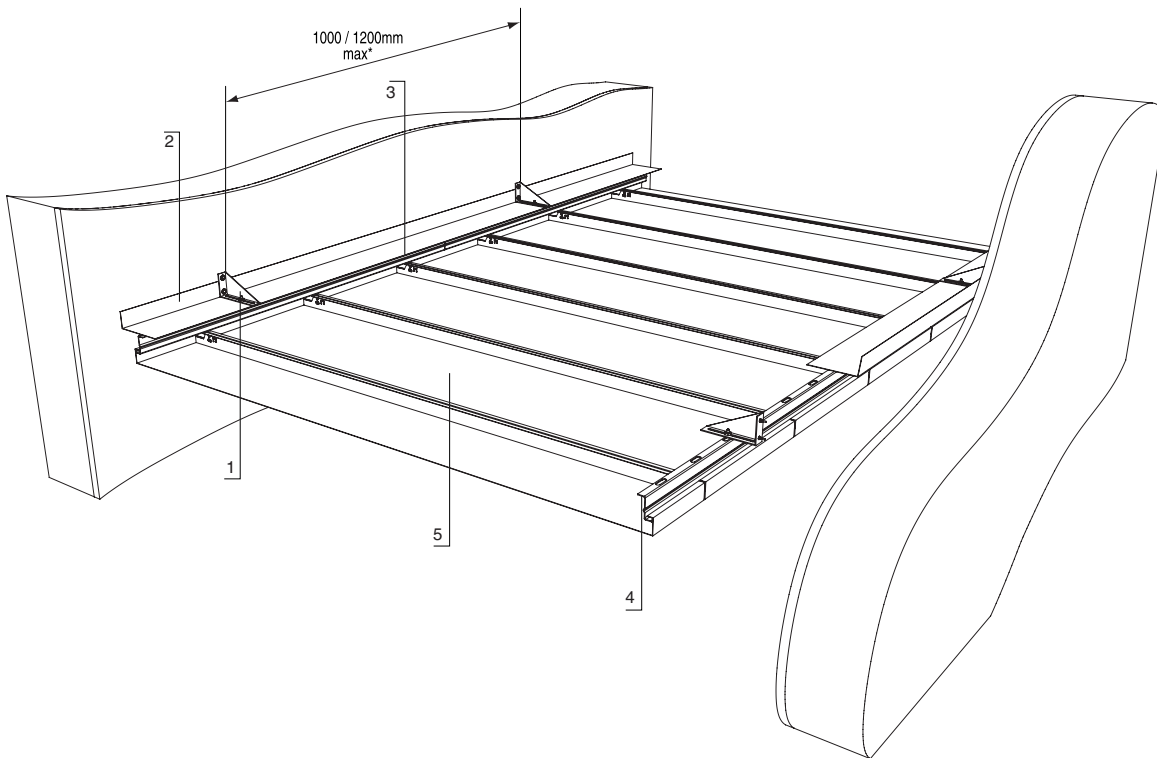
When supporting services such as down-lights, speakers, detectors and other mechanical and electrical services, the maximum load applied to the ceiling tile must not exceed 7kg including spreader yokes if applicable.

The application of a load should always be considered. Please consult the SAS Technical Department for further advice.

For loading for flange formed reinforced apertures, please consult with the SAS technical department.



Bracket fixed to C_L of setting out Vs for accurate setting-out of ceiling to 100mm increments, the supporting heel of the J-Bar is then centred directly below this. The bracket is handed to allow installation of the bracket in the reverse position.



1] Gallows Bracket 2] Closure Angle 3] J-Bar Splice 4] J-Bar 5] System 205 Tile

Refer to components section page 150 for full description and item numbers.

Notes

Where two J-bars meet and are spliced together, a gallows bracket should be installed within 300mm.

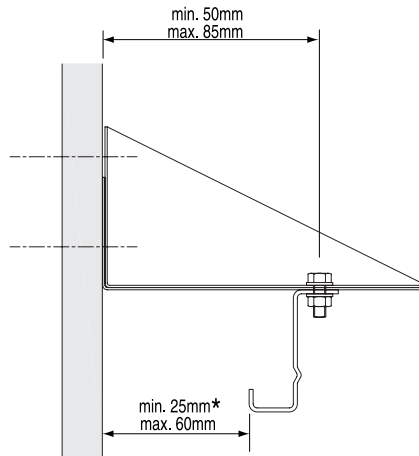
It is considered good practice to stagger joints in supporting structures.

Additional Loads

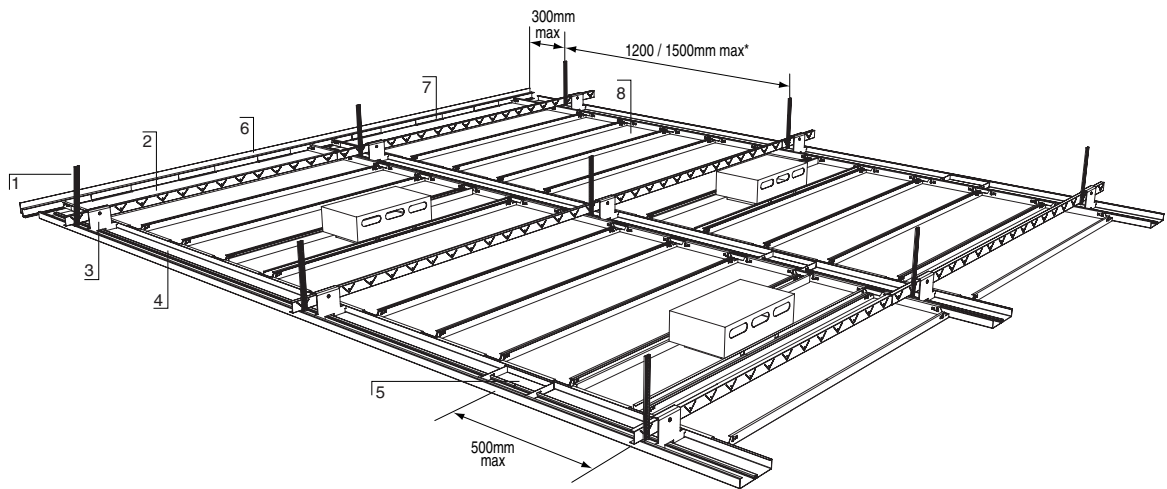
When supporting services such as down-lights, speakers, detectors and other mechanical and electrical services, the maximum load applied to the ceiling tile must not exceed 7kg including spreader yokes if applicable.

The application of a load should always be considered. Please consult the SAS technical department for further advice.

For loading for flange formed reinforced apertures, please consult with the SAS technical department.



**Note: for tiles to be able to hinge down, a maximum dimension of 40mm is required.*



- 1] Emac Hanger 2] Emac Channel 3] C-Profile Hook-over Suspension Bracket 4] C-Profile / Omega C-Profile 5] C-Profile Splice
 6] Perimeter Trim 7] Perimeter Wedge 8] System 330 Tile

Refer to components section page 151 for full description and item numbers.

Notes

Emac hangers should be installed a maximum of 300mm from the end of a run of Emac channels and 300mm from the joint between these channels. Where two C-Profiles meet and are spliced together, an Emac channel should be installed within 500mm.

It is considered good practice to stagger joints in supporting structures.

Additional Loads

When supporting services such as downlights, speakers, detectors and other mechanical and electrical services, the maximum load applied to the ceiling tile must not exceed 7kg including spreader yokes if applicable.

The application of a load should always be considered. Please consult the SAS technical department for further advice.

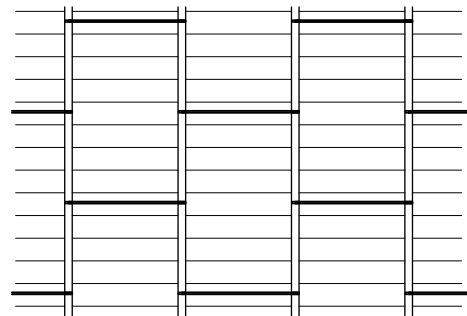
For loading for flange formed reinforced apertures, please consult with the SAS technical department.

Suspension Options

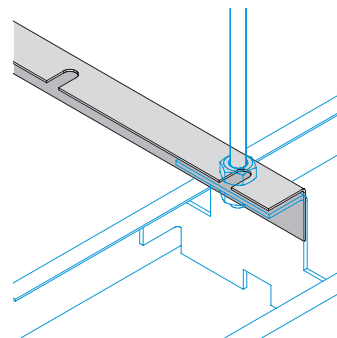
C-Profile suspension brackets can be used with Emac channel sub grid or threaded rod.

A single threaded rod can be used with C-Profile widths of less than 150mm, wider C-Profiles require two threaded rods for stability. A distancing profile must be used when using the following System 330 applications for lateral restraint and integrity.

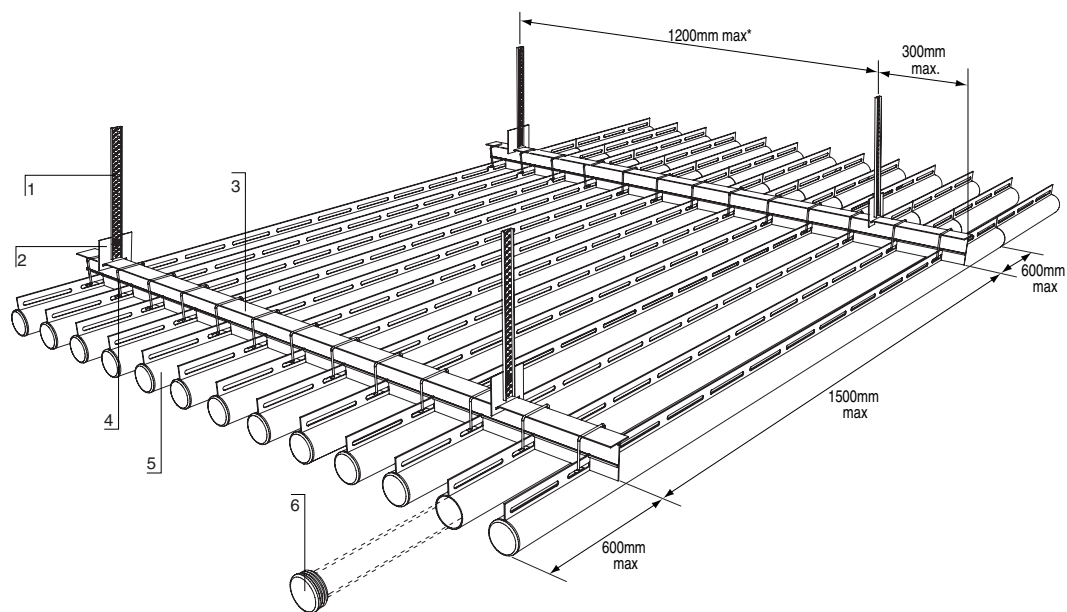
- All Linear 330 arrangements
- Tartan grid arrangement when single threaded rod is being used



Distancing profiles set out in chequer-board arrangement



Distancing profile in application



- 1] Emac Hanger 2] Carrier Suspension Hanger Bracket (TCB12) 3] Tubeline Carrier (TCA0219) 4] Wire Clip 5] Tube
6] End Cap

Refer to components section page 156 for full description and item numbers.

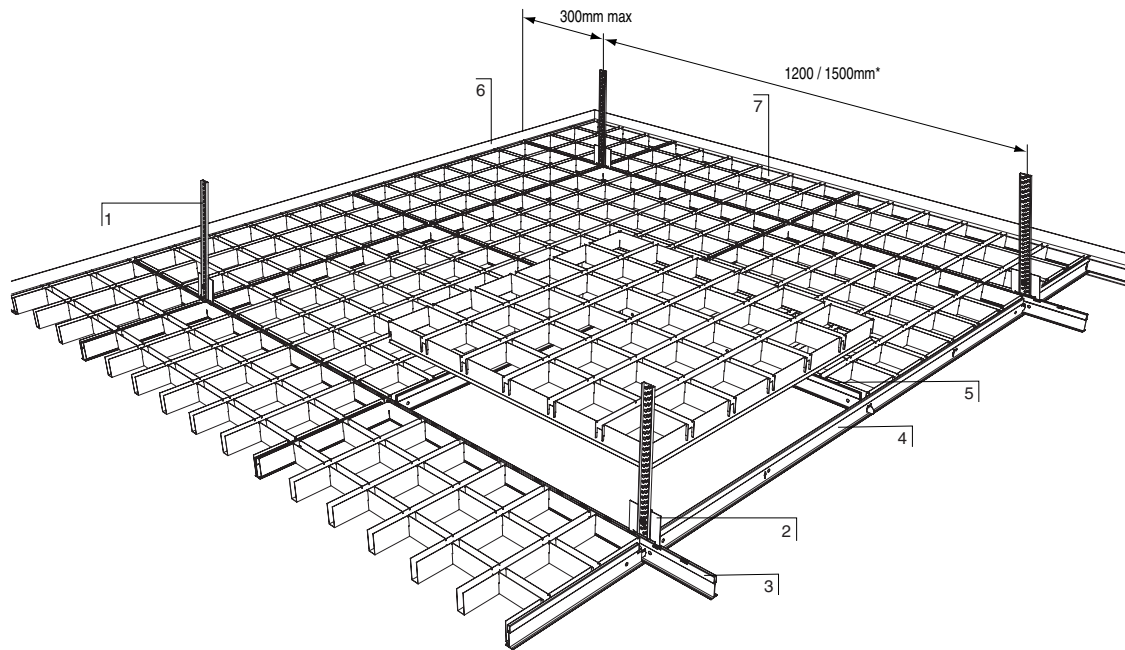
Notes

Emac hangers should be installed a maximum of 300mm from the end of a run of TCA0219 carrier and 300mm from the joint between these carriers.

The TCA0219 carrier should be installed a maximum 600mm from the end of any tube. Where these tubes meet and are spliced together, a TCA0219 carrier should be installed within 600mm.

It is considered good practice to stagger joints in supporting structures.

For further advice please contact the SAS technical department.



- 1] Emac Hanger 2] Emac Hanger Bracket 3] Main Runner 4] Double Module Cross Tee 5] Single Module Cross Tee
- 6] Perimeter Trim 7] Perimeter Wedge 8] System 130 Tile

Refer to System 130 components section page 146 for full description and item numbers.

Notes

SAS Emac hangers must be used in conjunction with Emac hanger brackets for installations at 1500mm centres max.

Emac hangers should be installed a maximum of 300mm from the edge of the system. Where two main runners are clipped together, an Emac hanger should be installed within 300mm.

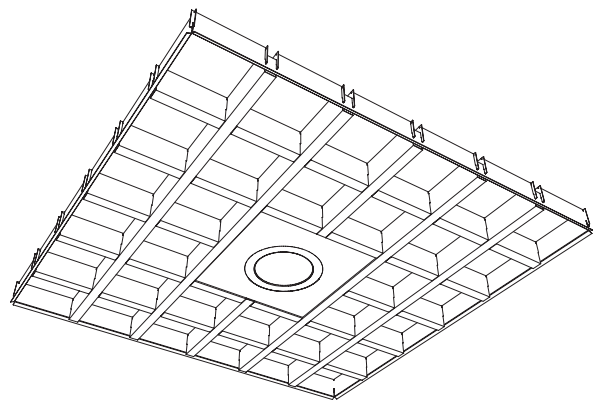
It is considered good practice to stagger joints in supporting structures.

Additional Loads

The Trucell system can support additional loads such as services up to a limit of 3kg. This limit is based on a point or uniformly distributed load over over 0.36m², positioned a minimum of 1000mm apart.

Trucell panels can be pre-ordered with enlarged cells to accept luminaire trays, supplied by either the luminaire manufacturer or SAS International.

For further advice please contact the SAS technical department.



View on underside of panel with luminaire tray.

System 120 –Channels at 1500mm centres, hangers at 1500mm centres

	Item Number	500 x 500	600 x 600	750 x 750	1200 x 300	1200 x 600	1500 x 300
Emac Hanger (Variable Length)	Various	45	45	45	45	45	45
Emac Channel 38x19mm	22974	17	17	17	17	17	17
Emac Spring Tee to Channel Bracket	12522	136	114	91	57	57	46
Emac Spring Tee	22976	50	42	34	21	21	17
Emac Spring Tee Splice	10408	50	42	34	21	21	17
Ceiling Tiles	Various	400	278	178	278	139	223

System 150 –Channels at 1500mm centres, hangers at 1500mm centres

	Item Number	500 x 500	600 x 600	750 x 750	1200 x 300	1200 x 600	1500 x 300
Emac Hanger (Variable Length)	Various	45 (34)	45 (34)	45 (34)	45 (34)	45 (34)	45 (34)
Emac Channel 38x19mm	22974	17 (14)	17 (14)	17 (14)	17 (14)	17 (14)	17 (14)
Deep Omega Bar to Channel Bracket	10351	136 (112)	114 (94)	91 (75)	57 (46)	57 (46)	46 (38)
Deep Omega Bar	22977	50	42	34	21	21	17
Deep Omega Bar Splice	10353	50	42	34	21	21	17
Ceiling Tiles	Various	400	278	178	278	139	223

The estimating quantity guide has been based on a 100m² ceiling. It therefore does not take the following into account:

- Areas that are out of square, cut tiles, wastage, perimeter trims, light fittings, air grille and other services

