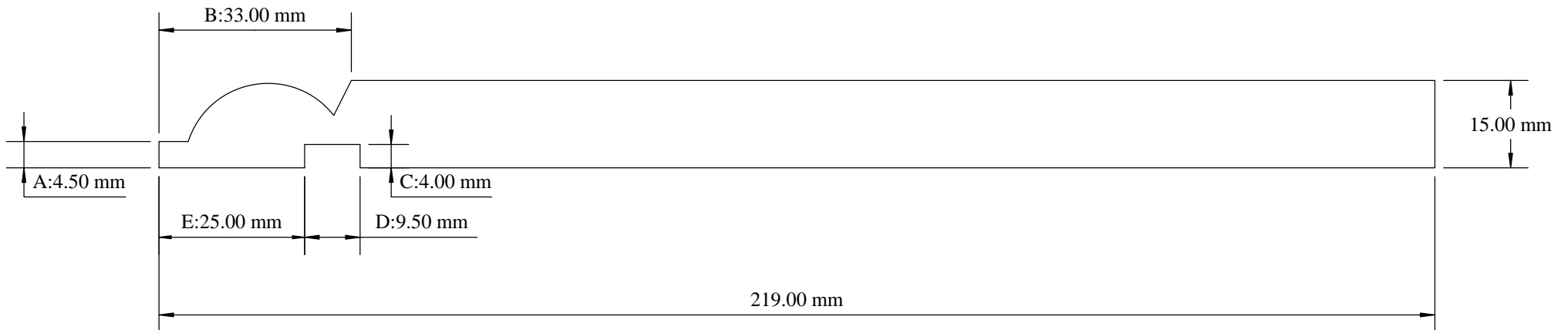


Place SAM 01 profile block on side spindle 2.  
 Place SAM 01 profile block on side spindle 3.  
 Place SAM 3166 profile block on the first top spindle.  
 Place 8-15mm adjustable groover on the first top spindle set at 9.50mm. Set to produce 9.50mm x 4.00mm deep groove.



Manufactured from Tricoya boards

AREA MACHINED AWAY 267.29 SQMM.

MOULDER	ANY
PASSES	1
DRAWN BY	S McMaster
DATE	14/10/13
SCALE	1:1
REV:	2
AUTH:	
TOLERANCE	+/- 0.5MM

# SAM MOULDINGS

Newpark Industrial Estate Greystone Road Antrim BT41 2RU  
 Tel : (028) 9442 8288 Fax : (028) 9442 8244

Website: [www.sammouldings.co.uk](http://www.sammouldings.co.uk) Email: [info@sammouldings.co.uk](mailto:info@sammouldings.co.uk)

PROFILE	DRAWN BY	S McMaster	REV:	2
SAM 3309	DATE	14/10/13	AUTH:	
	SCALE	1:1	TOLERANCE	+/- 0.5MM