



Isover Optima IWI System Details Guide

2 of 2 - Isover Optima IWI System Installation Guide also available online

ISOVER
SAINT-GOBAIN

Your environment. It's the nature of our business.

Buildings Insulation

Technical advice
and support line

including new build
residential, renovation
and commercial

Tel: **0115 945 1143**

Email: **isover.enquiries@saint-gobain.com**

Advice on

- » U-value and condensation risk calculations for constructions using Isover and British Gypsum products
- » Product application information
- » Thermal, fire and acoustic performance

ISOVER
SAINT-GOBAIN

Your environment. It's the nature of our business.

www.isover.co.uk

Your environment, it's the nature of our business

We develop sustainable insulation solutions to protect both your built environment and the natural environment. To maintain our focus we have placed environmental responsibility at the heart of our business strategy.

Our vision to lead the UK mineral wool market in energy efficiency and acoustic insulation solutions will be achieved with products that meet the highest thermal, acoustic and fire safety performance levels. We will meet changing regulations first and surpass current regulations for those that wish to excel. Our products will provide best value solutions for the residential, commercial, RMI and technical building environments, be safe to use and help to protect the environment.

At the heart of our strategy is our 3 Point Plan for environmental sustainability. This dynamic plan adopts the life cycle concept, guides our efforts to continuously improve the way in which our products and processes impact your environment, and seeks to ensure that Isover and our products use...

- ★ **Less Materials**
- ★ **Less Energy**
- ★ **Less Emissions**

www.3pointplan.co.uk

www.isover.co.uk

3pointplan
for environmental sustainability

ISOVER
SAINT-GOBAIN

Your environment. It's the nature of our business.



Contents

Solid Wall

5

ROOF

- Ventilated Roof Space Detail *page 5*
- Ventilated Roof Space / Room-in-the-roof Detail *page 6*
- External Wall Roof Detail *page 7*
- Party Wall Roof Detail *page 8*
- Optima Flat Roof Junction *page 9*

DETAILS

- Partition Floor Detail *page 10*
- Partition Wall Junction Detail *page 11*
- Internal Corner Detail *page 12*
- External Corner Detail *page 13*
- Masonry Separating Wall Detail *page 14*
- Reveal Detail *page 15*
- Head Detail *page 16*
- Cill Detail *page 17*
- Bay Window Splay *page 18*

Typical Solid Wall

19

DETAILS

- Vent & Socket Box Detail *page 19*
- Boiler Installation *page 20*

FLOOR

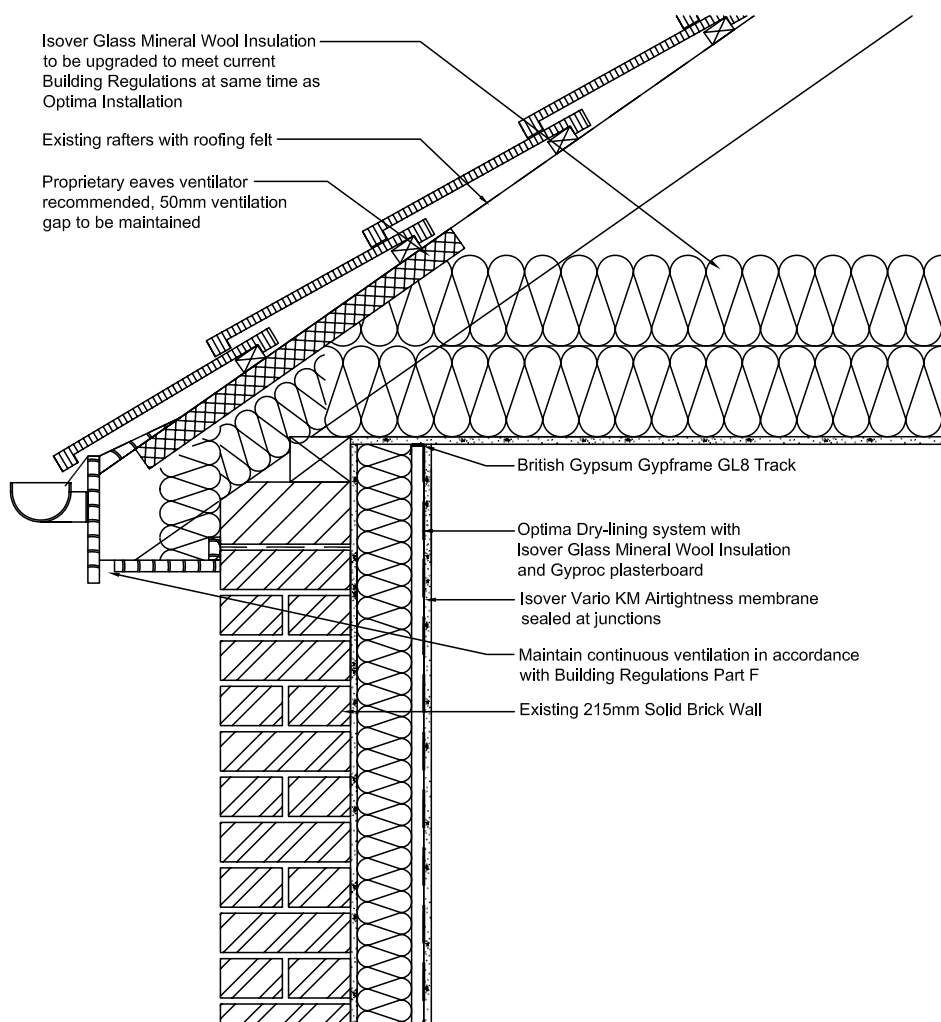
- Ground Floor Slab Detail (Un-insulated) *page 21*
- Ground Floor Slab (Insulated) *page 22*
- Suspended Timber Ground Floor *page 23*
- Party Wall Floor Slab *page 24*



Optima IWI System Details

● Solid Wall – Roof - Ventilated Roof Space Detail

For new build situations all parts of the Building Regulations must be complied with.

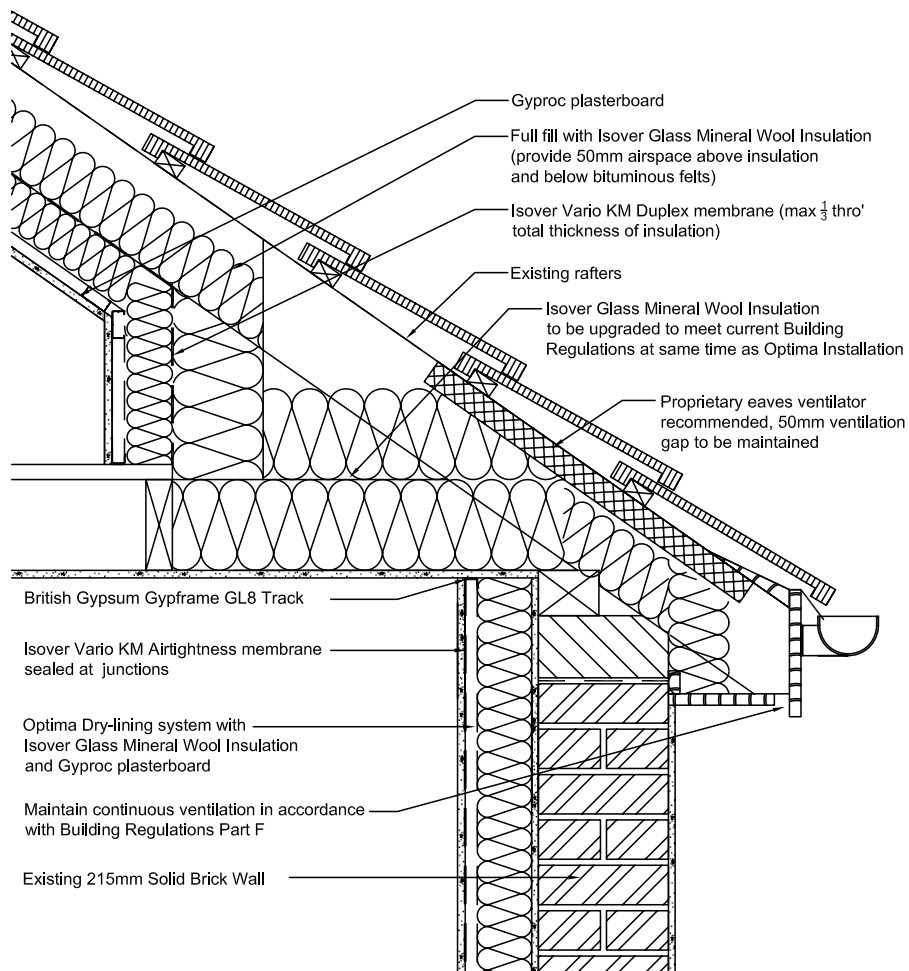




Optima IWI System Details

● Solid Wall – Roof - Ventilated Roof Space / Room-in-the-roof Detail

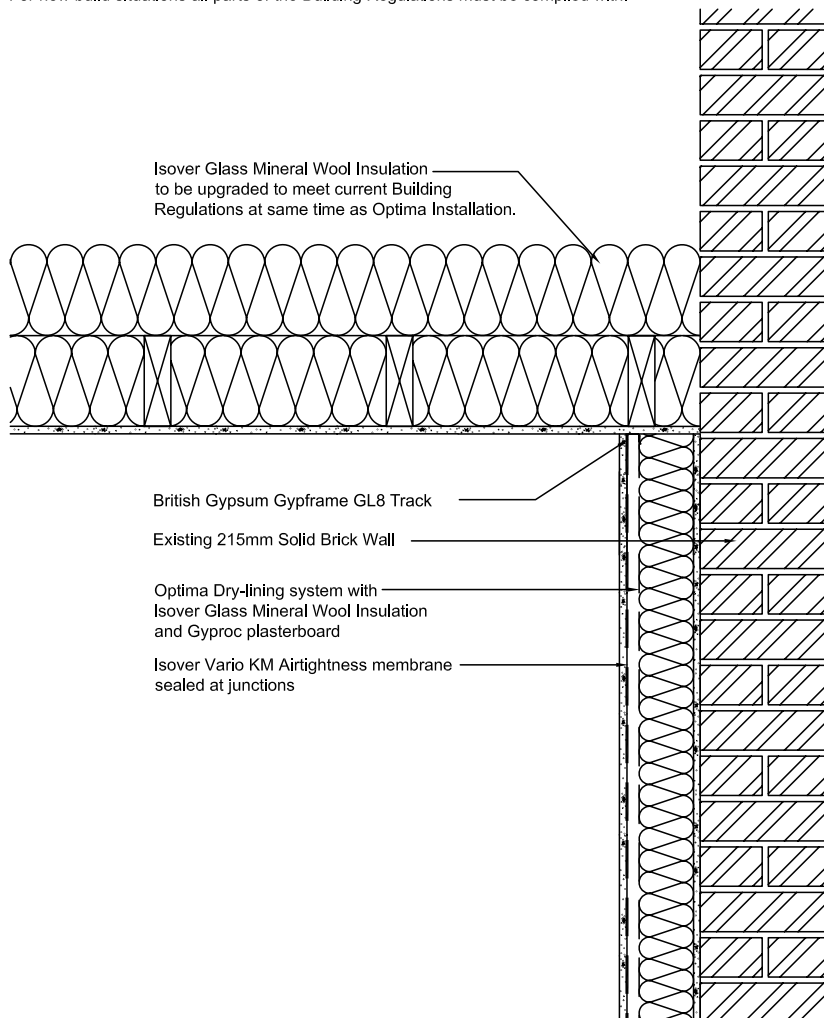
For new build situations all parts of the Building Regulations must be complied with.





● Solid Wall – Roof - External Wall Roof Detail

For new build situations all parts of the Building Regulations must be complied with.

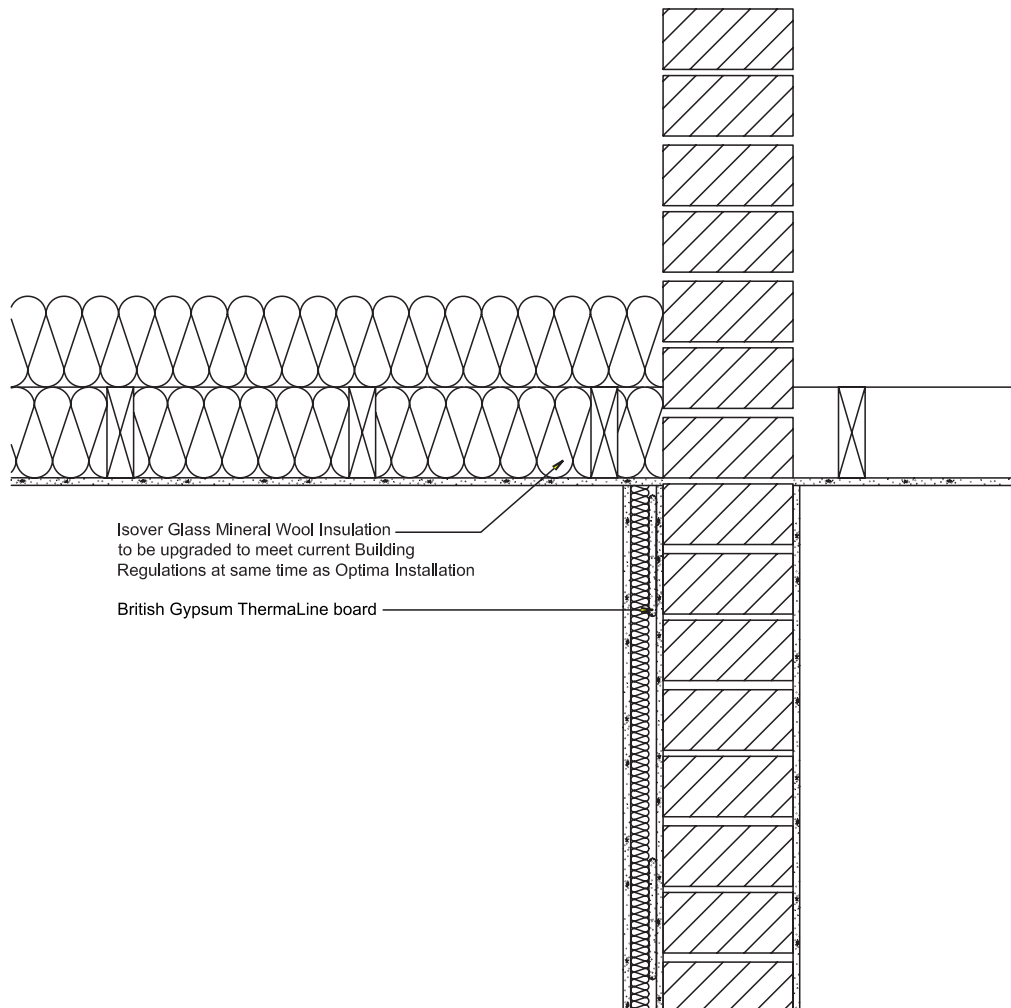




Optima IWI System Details

● Solid Wall – Roof - Party Wall Roof Detail

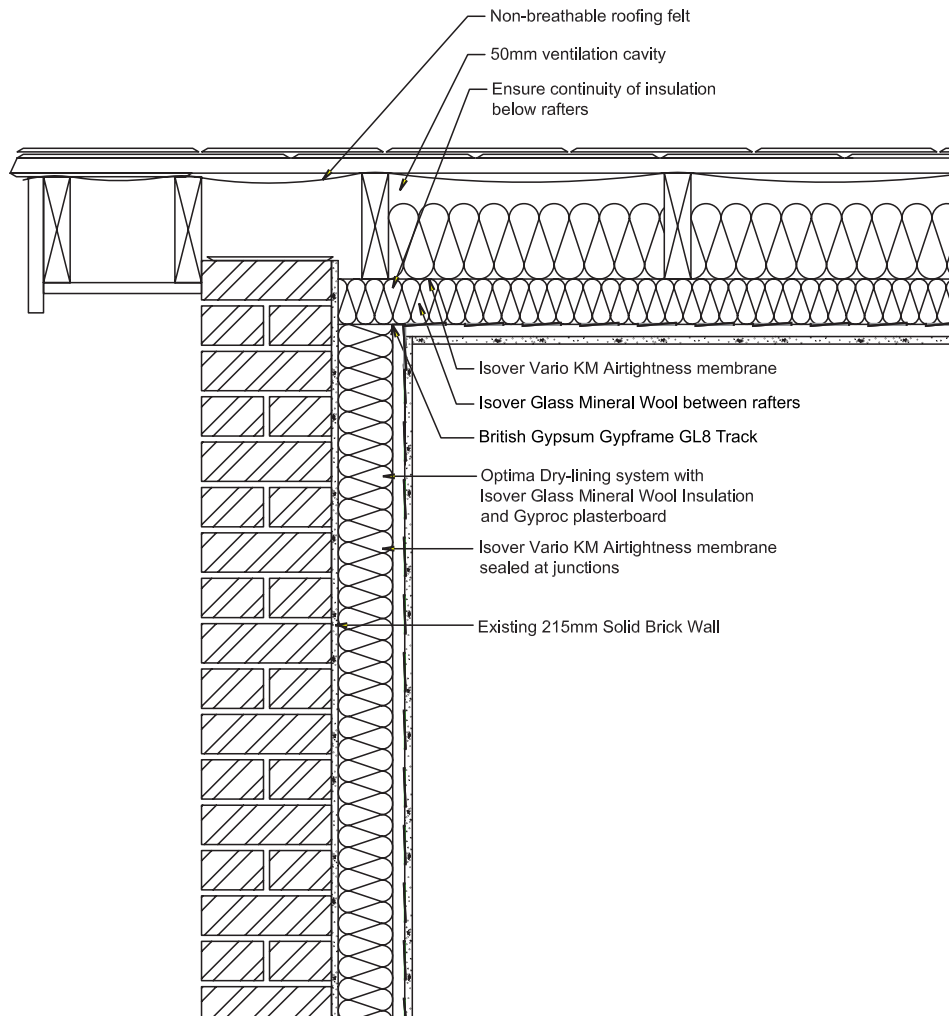
For new build situations all parts of the Building Regulations must be complied with.





● Solid Wall – Roof - Optima Flat Roof Junction

For new build situations all parts of the Building Regulations must be complied with.

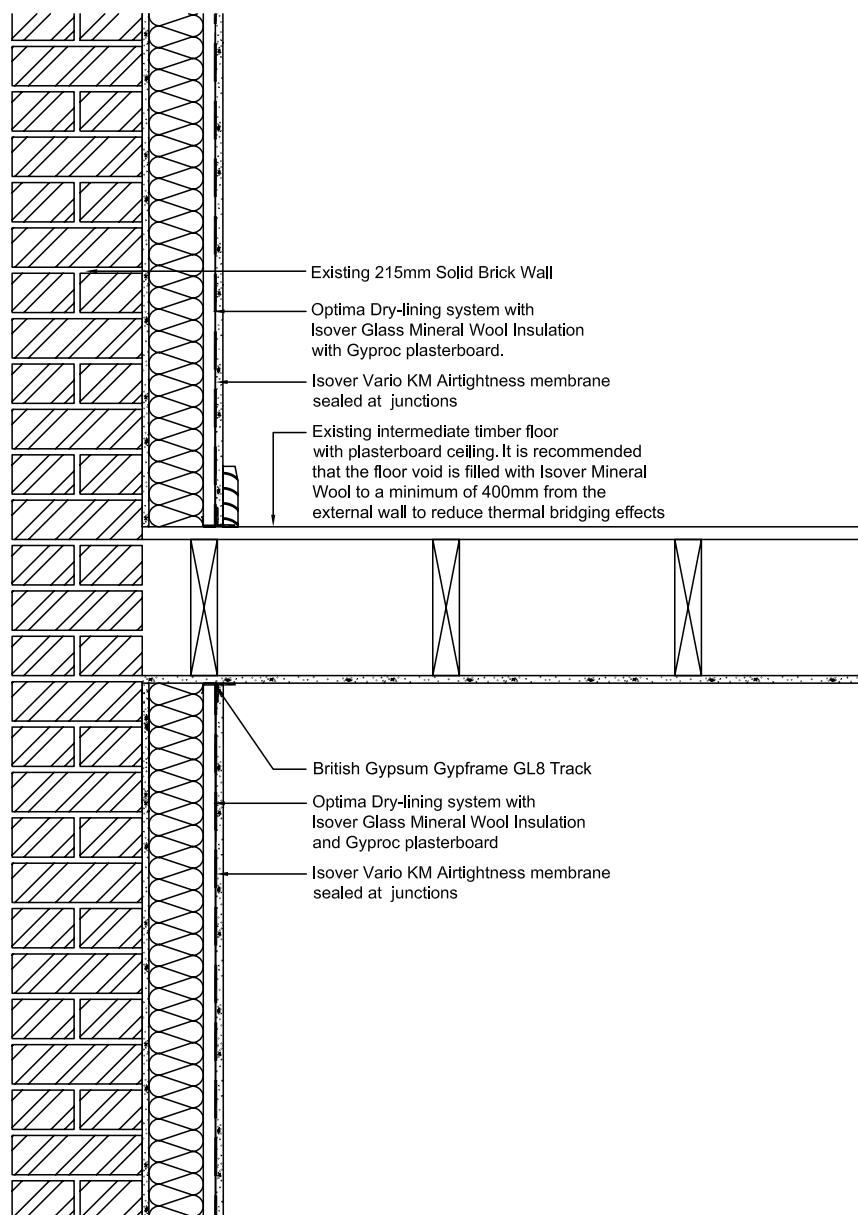




Optima IWI System Details

● Solid Wall – Details - Partition Floor Detail

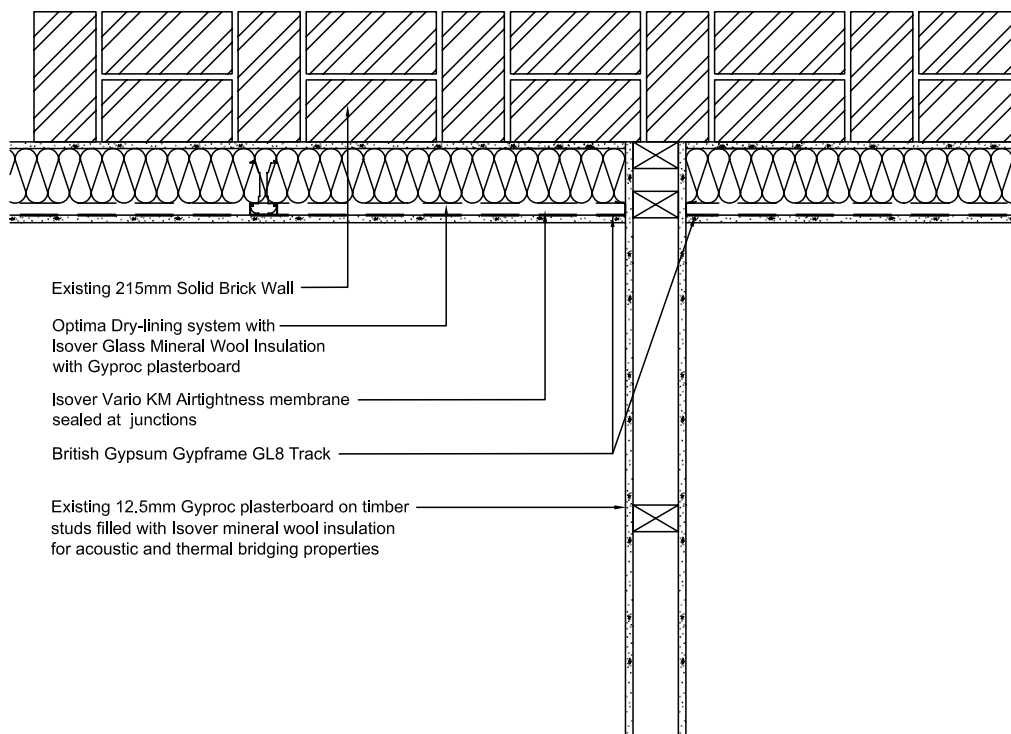
For new build situations all parts of the Building Regulations must be complied with.





● Solid Wall – Details - Partition Wall Junction Detail

For new build situations all parts of the Building Regulations must be complied with.

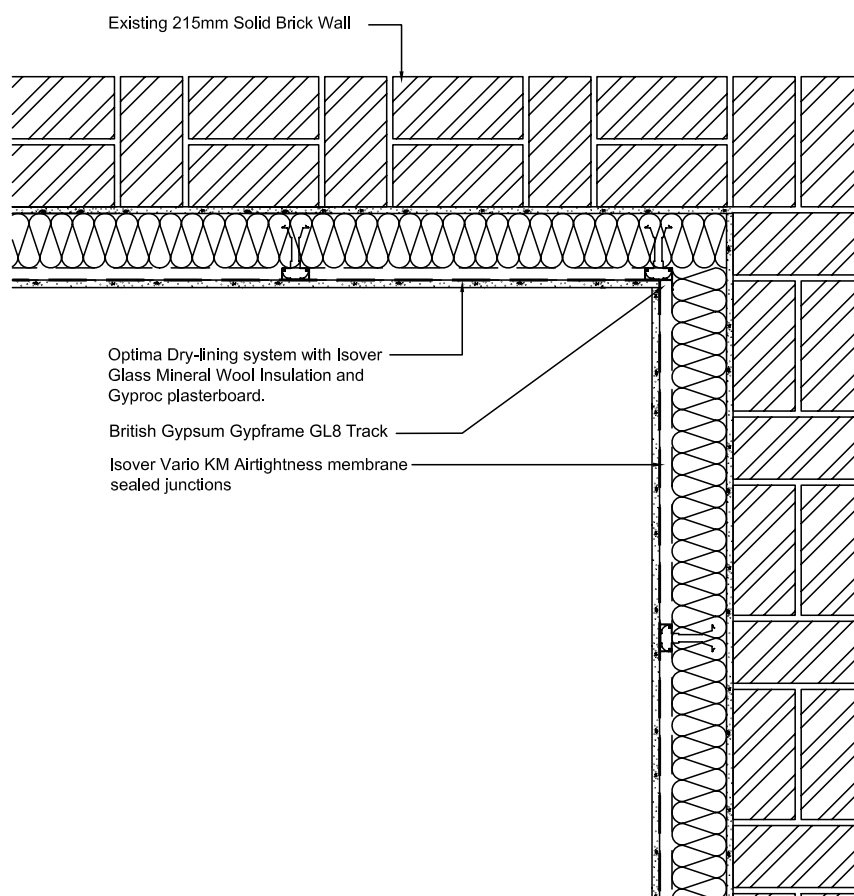




Optima IWI System Details

● Solid Wall – Details - Internal Corner Detail

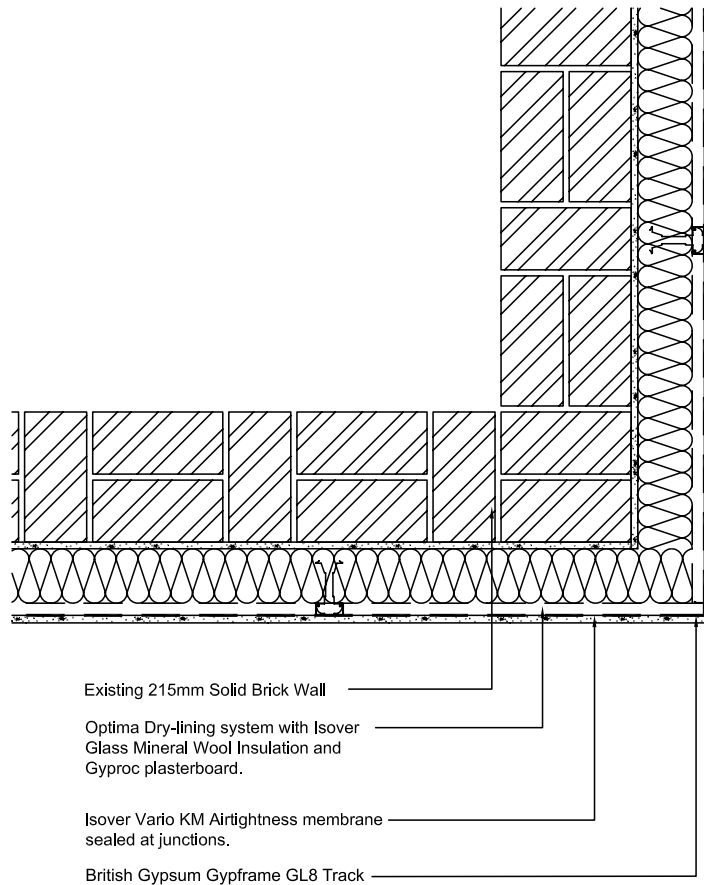
For new build situations all parts of the Building Regulations must be complied with.





● Solid Wall – Details - External Corner Detail

For new build situations all parts of the Building Regulations must be complied with.

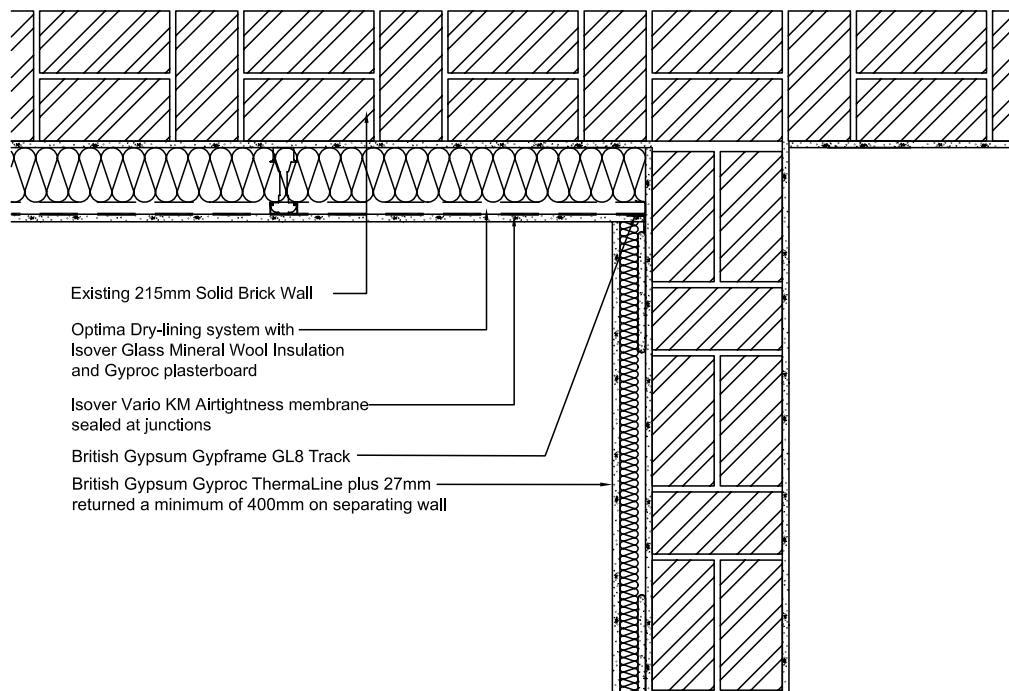




Optima IWI System Details

● Solid Wall – Details - Masonry Separating Wall Detail

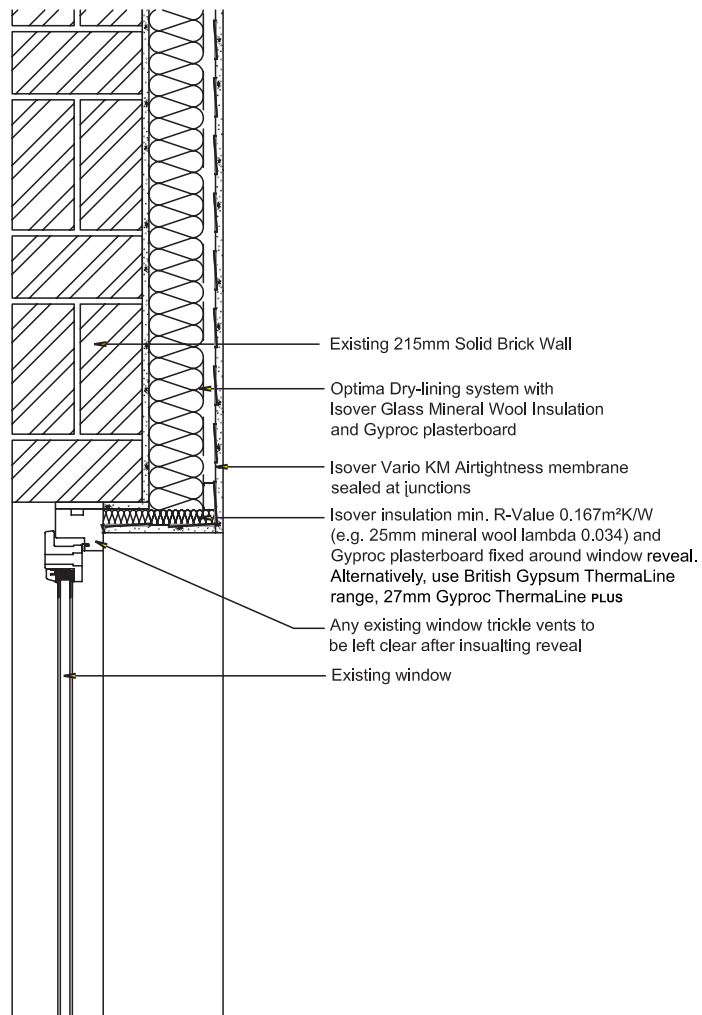
For new build situations all parts of the Building Regulations must be complied with.





● Solid Wall – Details - Reveal Detail

For new build situations all parts of the Building Regulations must be complied with.

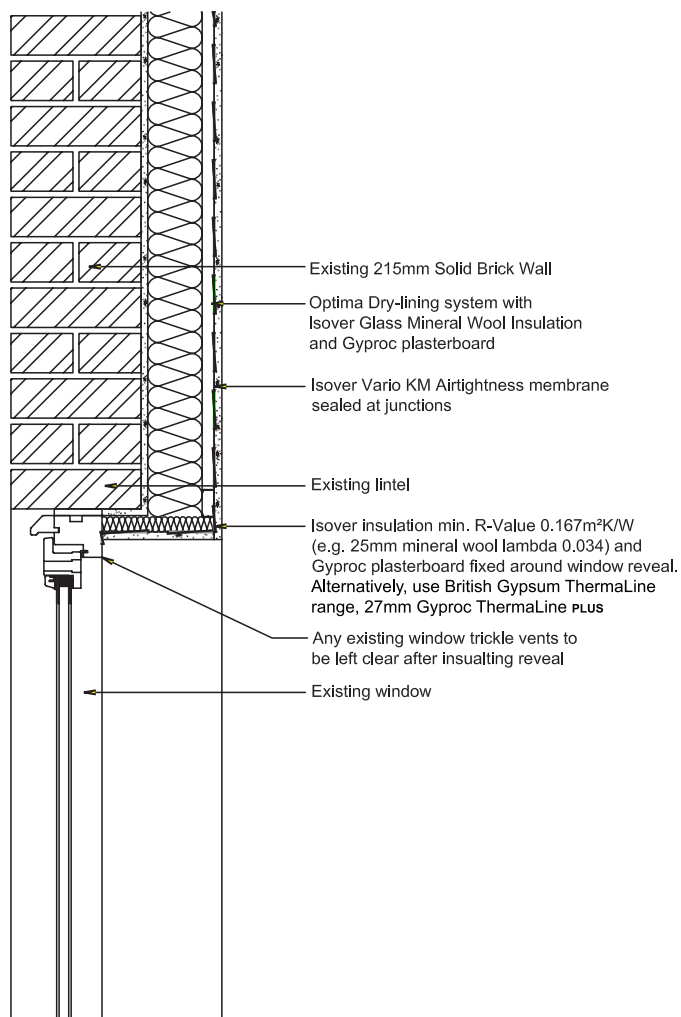




Optima IWI System Details

● Solid Wall – Details - Head Detail

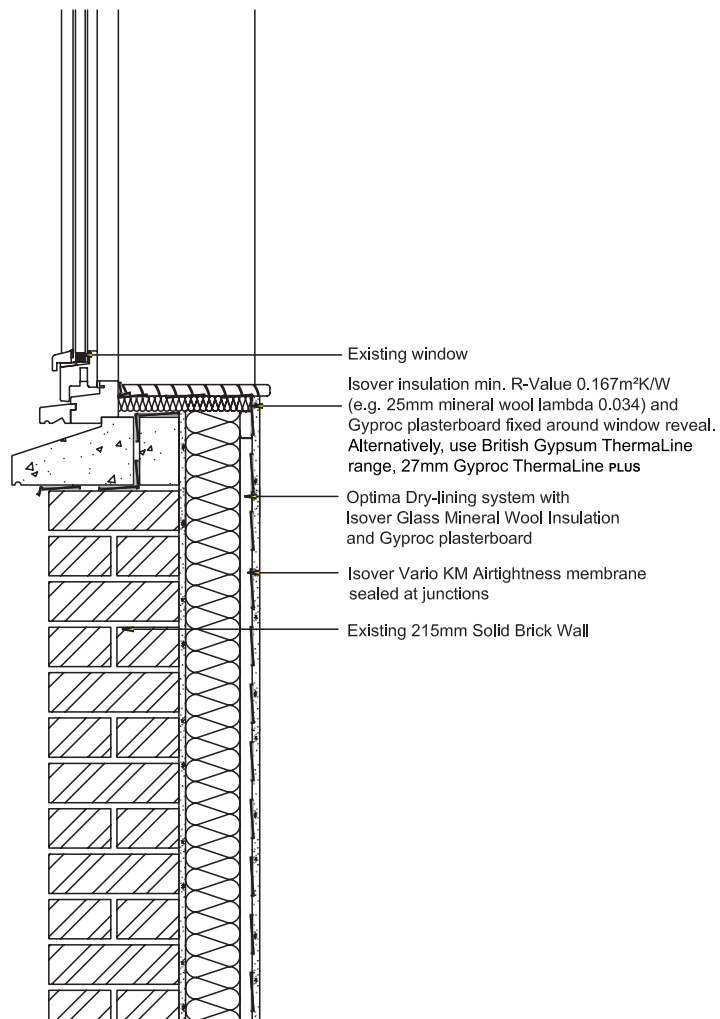
For new build situations all parts of the Building Regulations must be complied with.





● Solid Wall – Details - Cill Detail

For new build situations all parts of the Building Regulations must be complied with.

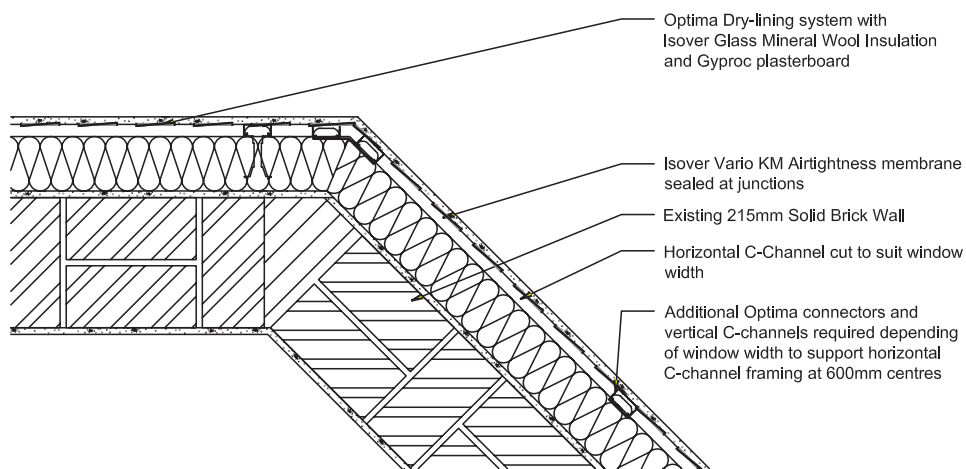




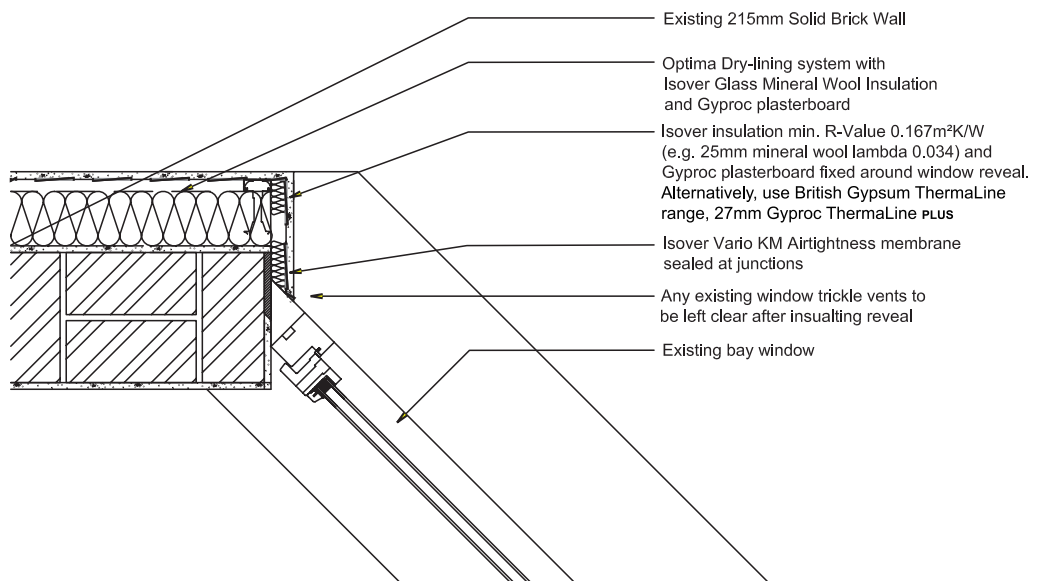
Optima IWI System Details

● Solid Wall – Details - Bay Window Splay

For new build situations all parts of the Building Regulations must be complied with.



LOW LEVEL DETAIL

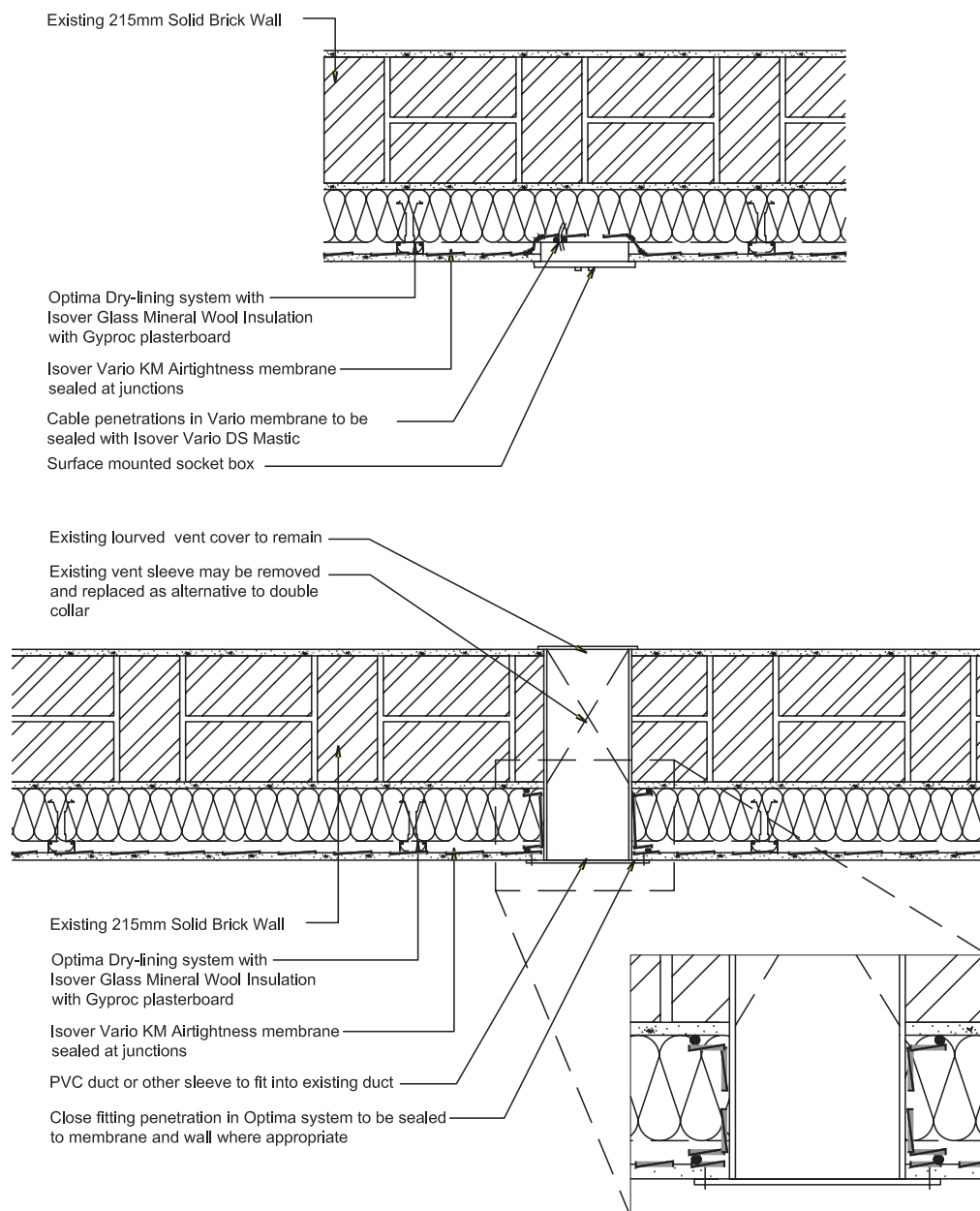


BAY WINDOW DETAIL



● Typical Solid Wall – Details - Vent & Socket Box Detail

For new build situations all parts of the Building Regulations must be complied with.

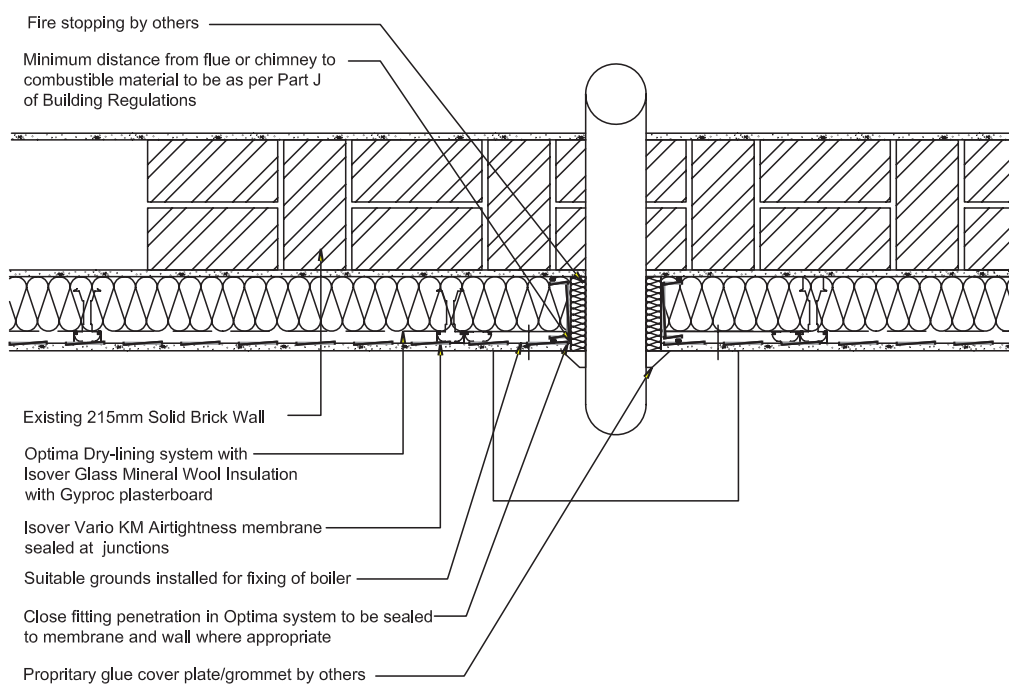




Optima IWI System Details

● Typical Solid Wall – Details - Boiler Installation

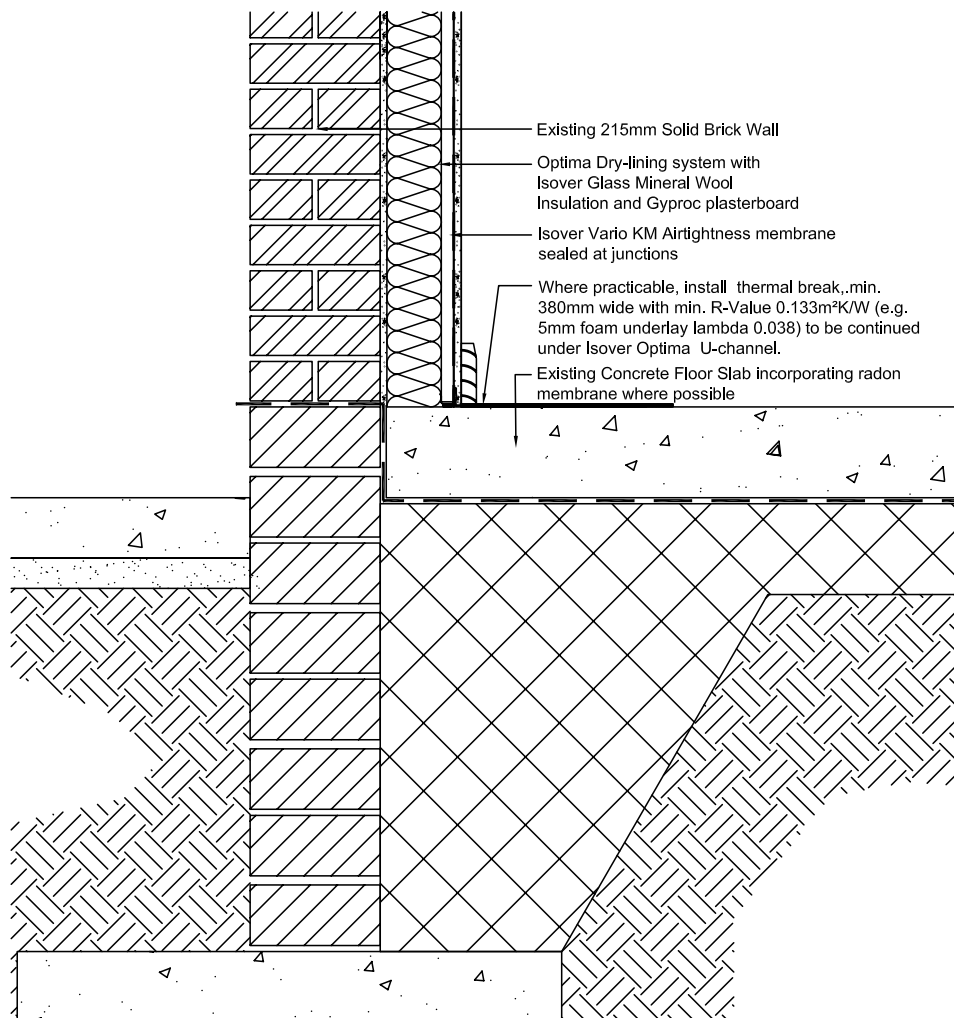
For new build situations all parts of the Building Regulations must be complied with.





● Typical Solid Wall – Floor - Ground Floor Slab Detail (un-insulated)

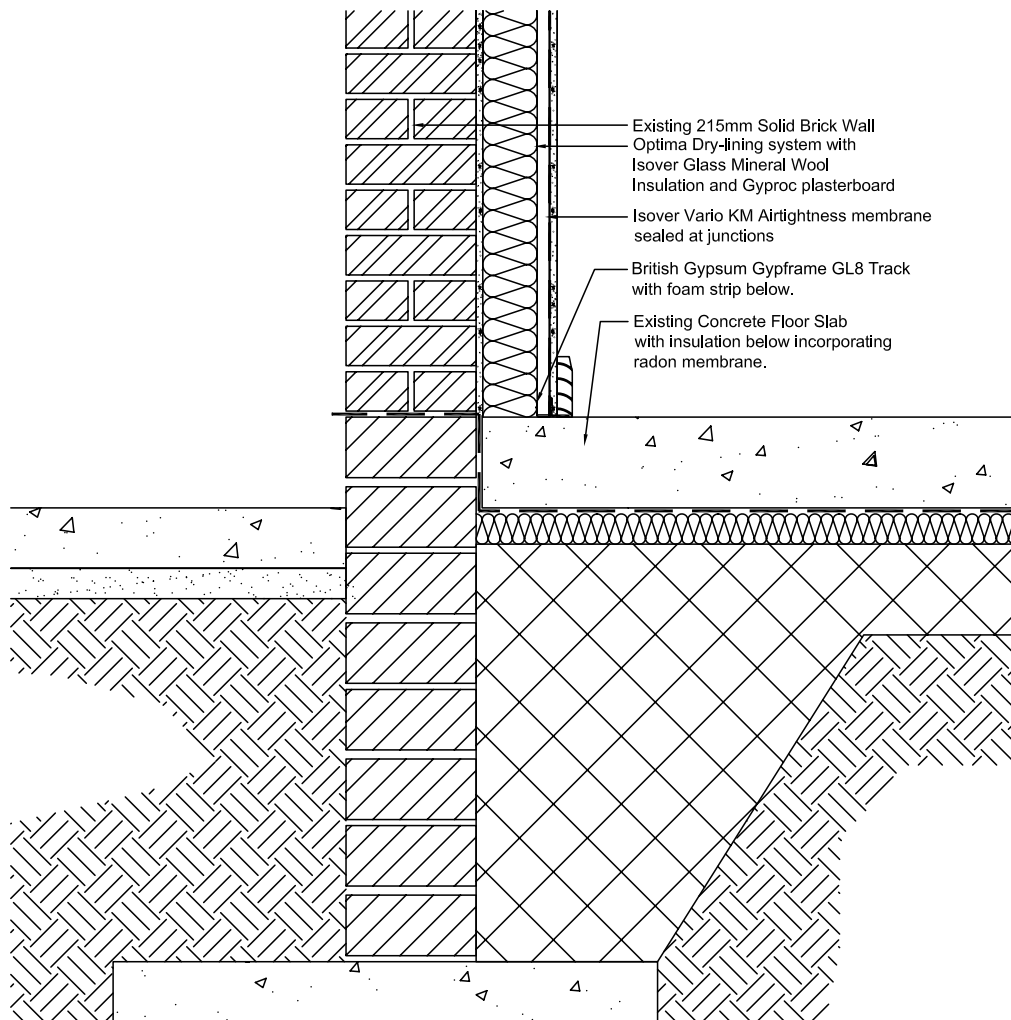
For new build situations all parts of the Building Regulations must be complied with.



Optima IWI System Details

● Typical Solid Wall – Floor - Ground Floor Slab Detail (Insulated)

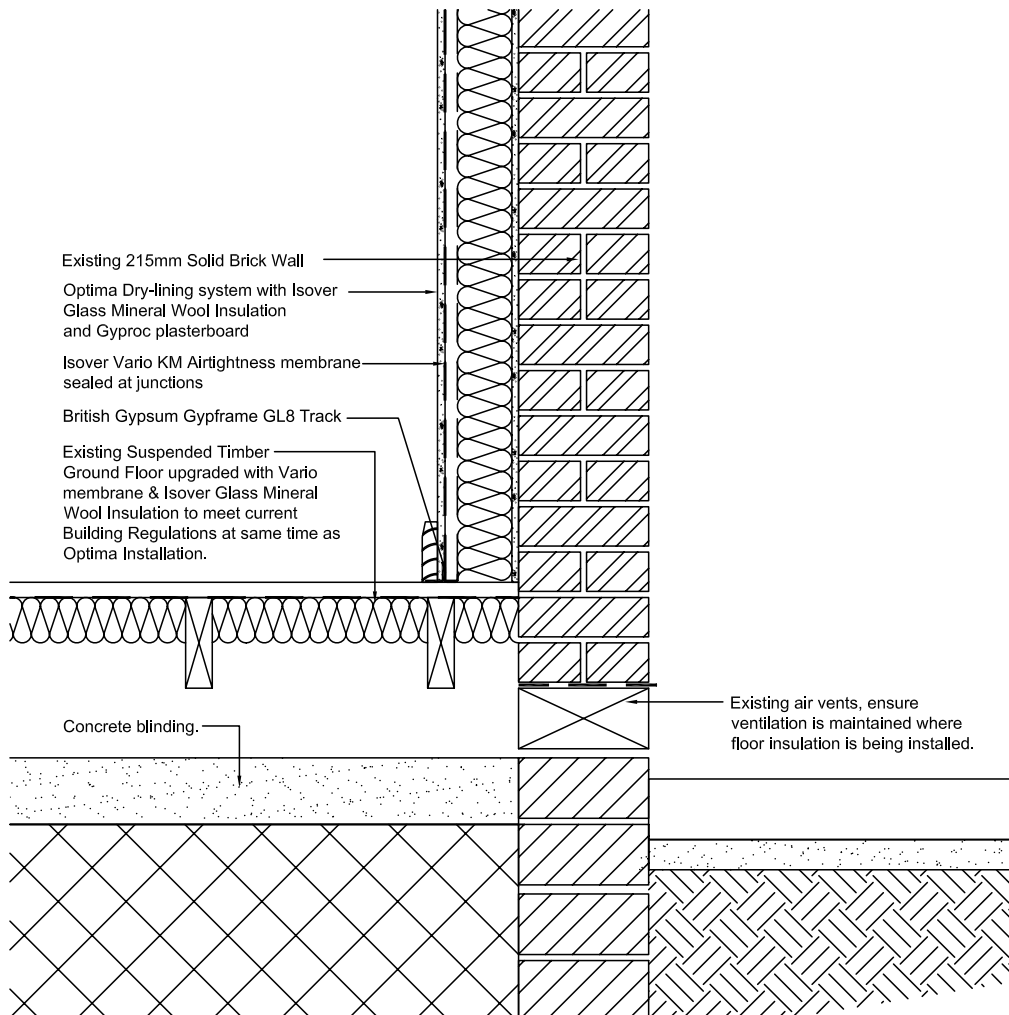
For new build situations all parts of the Building Regulations must be complied with.





● Typical Solid Wall – Floor - Suspended Timber Ground Floor

For new build situations all parts of the Building Regulations must be complied with.

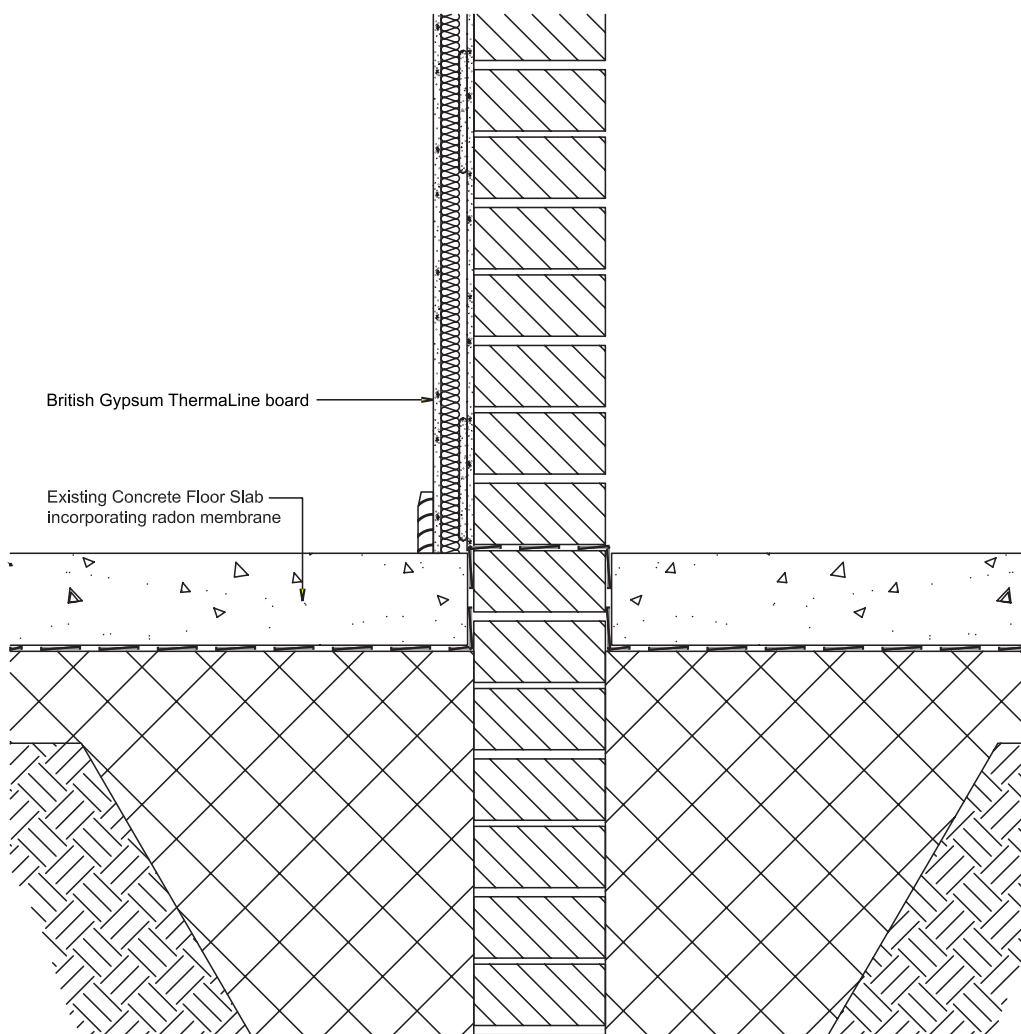




Optima IWI System Details

● **Typical Solid Wall – Floor - Party Wall Floor Slab**

For new build situations all parts of the Building Regulations must be complied with.





www.3pointplan.co.uk

www.isover.co.uk

Isover Order Placement or Order Enquiries:

Tel: 0800 032 2555
Fax: 0800 917 9188

**Isover Technical Advice - Buildings Insulation
Technical Enquiries:**

Tel: 0115 945 1143
Email: isover.enquiries@saint-gobain.com

Published Date: December 2012

Isover Document Reference: I-OPT-DG-1201

Isover
UK Commercial Centre
Gotham Business Park
Leake Road
Gotham
Nottinghamshire
NG11 0LB
Tel: 0115 969 8010
Fax: 0115 983 1675
Email: isover@saint-gobain.com

Isover reserves the right to revise product specifications without notice. The information in this document was correct to the best of our knowledge at the time of publication. It is the users responsibility to ensure that it remains current prior to use. The information in this document is for guidance only and should not be read in isolation. Users should read and familiarise themselves with all the information contained in this document and ensure that they are fully conversant with the products and systems being used, before subsequent specification or installation. For a comprehensive and up to date library of information visit the Isover website.