



 R O T E C

MAJOR PROJECTS

2022



THE BEST SUPPLY & INSTALL LEAD TIMES FOR **STEEL DOORS,** GUARANTEED.

Founded almost 15 years ago, Rotec has grown to become a leading supplier for steel doors to Tier 1 contractors across the UK.

With our years of industry experience and technical expertise, we are best placed to serve the needs of customers working on high value projects.

Our product range offers a broad range of solutions, from fire and security rated doors, to acoustic doors, louvres and glazed doors. Facilitating a project at an early involvement phase enables us to add the most possible value to our customer's supply chain; we take the time to understand requirements in thorough detail to enable delivery of a bespoke solution.

Enclosed in this brochure is a sample of our recently completed projects. All values included refer to the value of the steel door package.

For more information, please get in touch with our team: info@rotecsecurity.co.uk

ROTEC PRODUCT RANGE



FIRE



SECURITY



GLAZED



LOUVRED



ACOUSTIC

STEEL DOORS **BUILT TO LAST**

Manufactured in the UK, our doors are made from the highest quality steel, providing a safety-first solution which is built to last.

No two projects are the same and neither are our doors, which are tailor-made to suit each project's unique requirements. We offer a range of configurations, hardware and finishes across our entire product catalogue.

ADDING VALUE TO YOUR SUPPLY CHAIN: **THE 360 SOLUTION**

The Rotec 360 solution provides in-depth design consultation, tailor-made products, installation service and product after care. We're committed to going the extra mile, providing a solutions-driven approach and excellent customer service as standard.

We primarily work on high-value projects where we can add the most value on a scheme.

Our steel doors are made bespoke to suit each project specification. We take the time to understand all requirements in detail, before offering a solution that delivers on performance - and all necessary compliance procedures - without compromising on architectural vision.



Bespoke orders



Tailored solutions



Quality products



Fast-track service



Technical expertise



Dedicated Project Manager



RECENTLY SECURED

PROJECT UNITY PLACE
VALUE £400k
CONTRACTOR JOHN SISK & SONS

PROJECT MARYLEBONE SQUARE
VALUE £222k
CONTRACTOR KIER

PROJECT GATESHEAD MSCP
VALUE £326k
CONTRACTOR MORGAN SINDALL

PROJECT ECOPARK SOUTH
VALUE £165k
CONTRACTOR TAYLOR WOODROW

PROJECT HALLSVILLE QUARTER - PHASE 3
VALUE £161k
CONTRACTOR BOUYGUES

PROJECT PROJECT OSIER
VALUE £139k
CONTRACTOR BENNETT CONSTRUCTION



SKY STUDIOS ELSTREE

CONTRACTOR: BAM

Background

Sky Studios Elstree, Sky's new state-of-the-art film and TV studio, will open later this year and will become home to new film and TV projects from Sky and NBC Universal.

Set to become operational in early 2022 and fully open with 13 sound stages later in the year, Sky Studios Elstree will create 2,000 jobs locally and attract £3bn of new production investment over the first five years alone.

Sky's ambition is to build the world's most sustainable film and TV studios, aligning with its overall commitment to be net zero carbon

by 2030 and the Sky Zero campaign to help millions of customers reduce their carbon footprint.

Our Solution

Rotec are providing a total of 213 doors on the scheme: a mixture of internal and external doors with security, acoustic and fire ratings.

As a key partner within BAM's supply chain, we are providing ongoing technical expertise and a bespoke product solution, focusing on the project's specific security and acoustic requirements.



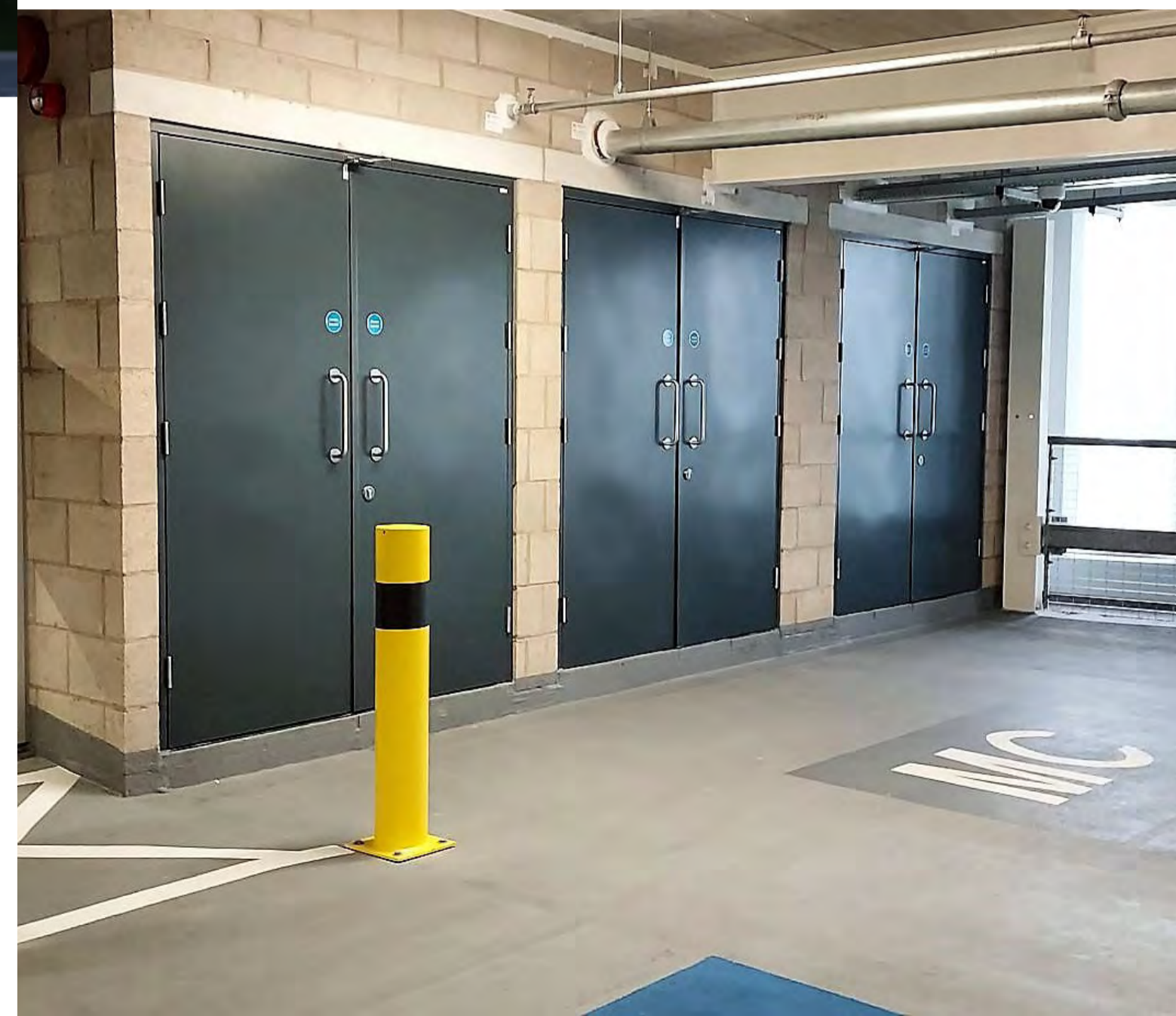
126 SR2 Doors



85 Acoustic & Fire Rated Doors



2 Fire Rated Roller Shutters



BROADMARSH MSCP

CONTRACTOR: GALLIFORD TRY

Background

Centrally located, Broadmarsh (MSCP) provides 1,200 parking spaces across 6 suspended levels above the bus station. An interconnecting link bridge has created pedestrian access to the popular shopping centre next door.

£48 million was invested into the car park, library and retail centre to regenerate the area and drive increased footfall.

720 solar panels, an electronic vehicle management system and sustainable materials have contributed to the eco-friendly construction and ongoing performance of the building since its completion in 2021.

Our Solution

Rotec provided 109 fire doors and 4 standard doors on the project. Our expert technical team were able to assist with the varied fire ratings of the doors to ensure complete compliance throughout the build.



109 Fire Doors



4 Standard Doors



MANCHESTER AIRPORT DROP & GO MSCP

CONTRACTOR: GALLIFORD TRY

Background

The project had complex fire and security requirements; we therefore recognised the importance of early engagement with the scheme's architect, AECOM, to develop a bespoke solution. We worked collaboratively throughout the initial design process, providing several drawing revisions, and sharing our technical product knowledge and sector expertise through regular meetings.

Our Solution

A comprehensive specification was developed, including a L20 specification, door and ironmongery schedule and elevations. In addition, a bespoke threshold was developed to ensure no water ingress on the open deck; this has since become a standard feature across all Rotec MSCP projects.



180 Fire Doors



13 Standard Doors

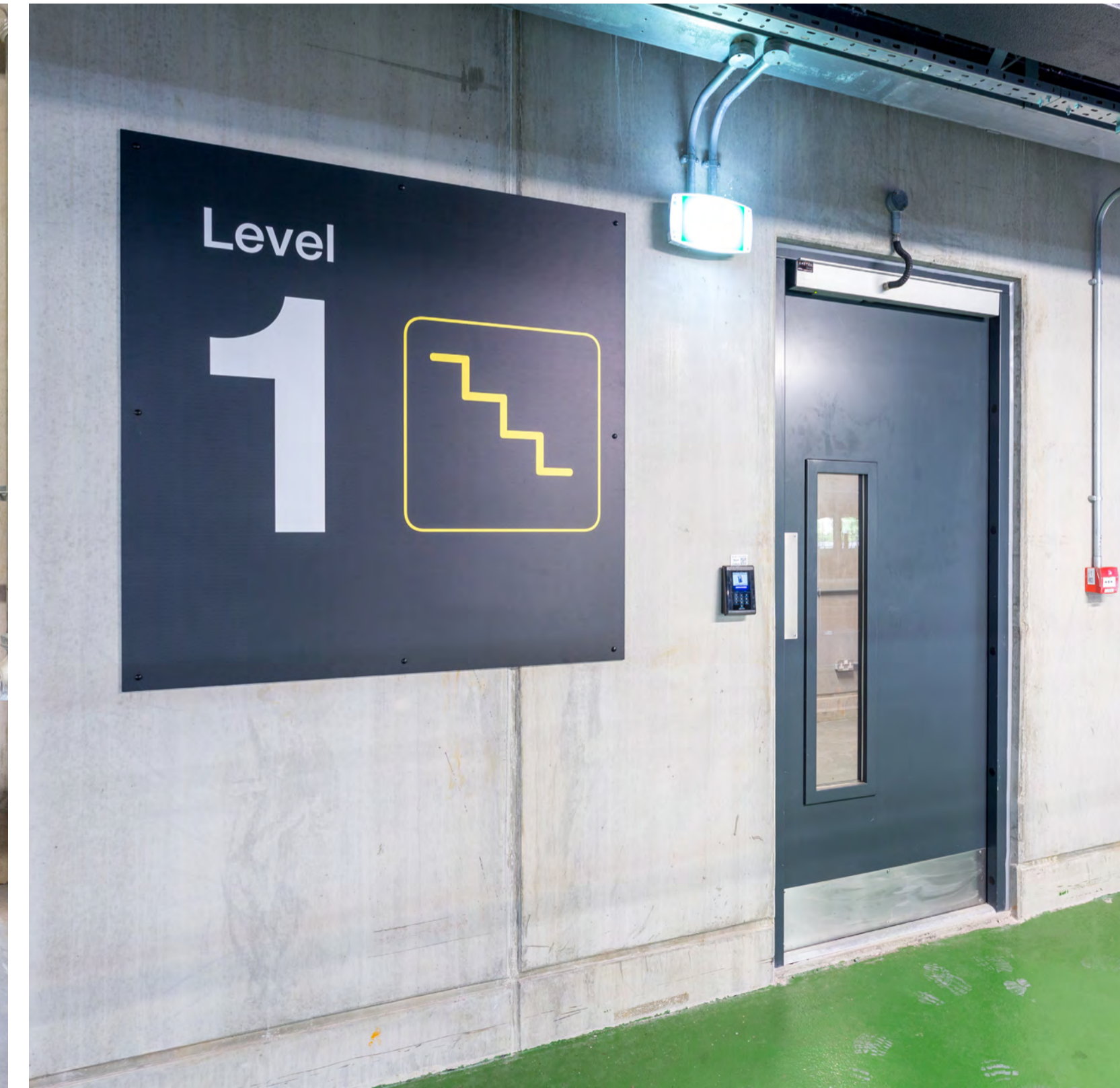


4 Louvred Doors



I HAVE USED ROTEC ON A NUMBER OF OCCASIONS AND THEY HAVE ALWAYS PROVIDED AN EXCELLENT SERVICE, GOOD QUALITY PRODUCTS AND EXCELLENT AFTER CARE.

PROJECT MANAGER | GALLIFORD TRY





Our Solution

As a key supply chain partner to Vinci, Rotec were appointed to manage the steel door package across the scheme.

During the initial planning phase, our technical estimating team conducted a thorough review of requirements to establish the most viable products and solutions. It soon became apparent that the security requirements had been over-specified, so a design meeting was held with the project architects, Leach Rhodes Walker, to consult with them directly. We developed the design requirements in conjunction with the project team, which resulted in significant cost savings.

As a multi-use development, the purpose and specification for each door varied significantly – which is where our technical expertise proved to be vital. By taking a consultative approach, we empowered our customers with the ability to make informed decisions, in terms of both product suitability and safety performance.

With numerous buildings on site and phased handovers, it was imperative to maintain close control of the programme schedule. Maintaining regular communication with Vinci and coordinating with the on-site team throughout the project was key to overall success.



BRIDGE STREET QUARTER

CONTRACTOR: VINCI

Background

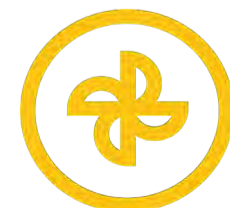
Time Square in Warrington's Bridge Street Quarter offers a state-of-the-art retail space, cinema, restaurants, offices and a permanent market hall. In addition to creating several new jobs, the £107 million development has created a vibrant public square, with plenty of outdoor seating options and on-site amenities.



58 Security Doors



11 Fire Doors



3 Louvred Doors



Recently secured -

ROTEC SECURES £150M UNITY PLACE PROJECT



Santander's 'Unity Place' is the new, landmark headquarters for the UK division of the global finance company.

Four core pillars make up Santander's well-being strategy: mental, physical, financial, and social; from these, a modern, health-centric office concept has been commissioned. Vast open-plan offices will span across 8 floors as well as retail outlets, a gym, a community hall and an auditorium on the ground floor and further dining facilities and a running track on the rooftop terrace.

The headquarters will bring together 6,000 employees from four local Santander offices in a new, state-of-the-art environment designed to attract and retain the best of local talent. Keen to contribute to the local community, Unity Place will encourage local businesses and startups to utilise the on-site coworking facilities and book the state-of-the-art meeting spaces.

Dubbed the UK's Silicon Valley, Milton Keynes has quickly become a leading technology hub for the country. The area is undergoing significant development in line with the uber-modern MK:U which will provide higher education courses in science, technology, engineering and mathematics once open in 2023.

At 44,000 m², the colossal commercial space is an impressive undertaking by John Sisk under the Architectural vision of LOM Architects. Having worked on a number of large-scale commercial projects previously, our team was keen to seize the opportunity to provide a quote for Unity Place. We're ecstatic to have been awarded the steel door package on this project with the installation of over 150 steel doors scheduled to begin in May of this year and completion anticipated in Q2 of 2023.

Our sales manager, Robbie Shaw was key in securing the project;

"Santander's New HQ is a fantastic project to be involved in, an environmentally sustainable building designed around enhancing the health and wellbeing of occupants."

We have an excellent relationship with John Sisk and were awarded the steel door package following involvement on the project with the client and architect."



Recently secured -

ROTEC TO DELIVER MARYLEBONE SQUARE'S STEEL DOOR PACKAGE



Located on the largest plot of undeveloped land in central London, Marylebone square is a monumental landmark project with a proposed BREEAM rating of excellent. The £106m investment into the plot will deliver premium accommodation.

The 25,160m² project will see the creation of a nine-storey building comprising of five residential floors above ground floor and a three-storey basement. It will comprise of 54 private apartments and 25 affordable apartments situated across the five upper floors, with the ground and lower ground floors providing retail, restaurant and community facilities including a community hall, which will house the popular farmers market each Sunday. The lowest basement level will include parking for residents and plant space, with the B1 level providing a new public parking facility.

The building has been designed in the style of a contemporary interpretation of a classic London mansion block that seamlessly blends into its historic surroundings. The external envelope consists of a bespoke ceramic cladding with a range of glazes across the elevations, with cast aluminium balustrading and feature frieze detailing.

Marylebone Square will also include a central external courtyard that allows daylight into the building, whilst providing a covered, naturally ventilated space providing residents with protection from adverse weather conditions.

We're delighted to have secured the steel door package on Marylebone Square as part of Kier's supply chain. Our team will begin installing 127 fire-rated and general-purpose products in Q3 of 2022. Upon completion, our doors will provide secure access to the retail units, plant rooms, car parks, stairwells, and bicycle storage.

“Having worked with Kier on over 40 projects across 17 regions, we're pleased to have secured our first London project with the Group as part of its supply chain.

This is a really exciting project for the Marylebone area and will undoubtedly contribute to the vibrant community that has already been established over many years. We're elated to be able to add this to our portfolio of major projects”

- Lucy Fransham, Key Account Executive

When providing the quotation, our technical estimating team identified a 5% value engineering saving within the commercial without compromising on quality and essential compliance of the scheme. Our highly skilled project management team is working closely with Kier to achieve timely project completion, which is anticipated for summer 2023.



IN ADDITION, WE HAVE ALSO COMPLETED WORKS ON THE FOLLOWING:

Project: Cardiff Innovation

Value: £81k

Contractor: Bouygues

Project: Newcastle Helix

Value: £64k

Contractor: Bourne

Project: G Hub, Crawley

Value: £53.9k

Contractor: Readie Construction

Project: Fletton Quays

Value: £32k

Contractor: Bowmer & Kirkland



For more information about our products and services, and how we can assist you on your next project, get in touch:

Robbie Shaw | Sales Manager

07384 457650

robbie.shaw@rotecsecurity.co.uk

www.rotecsecurity.co.uk

