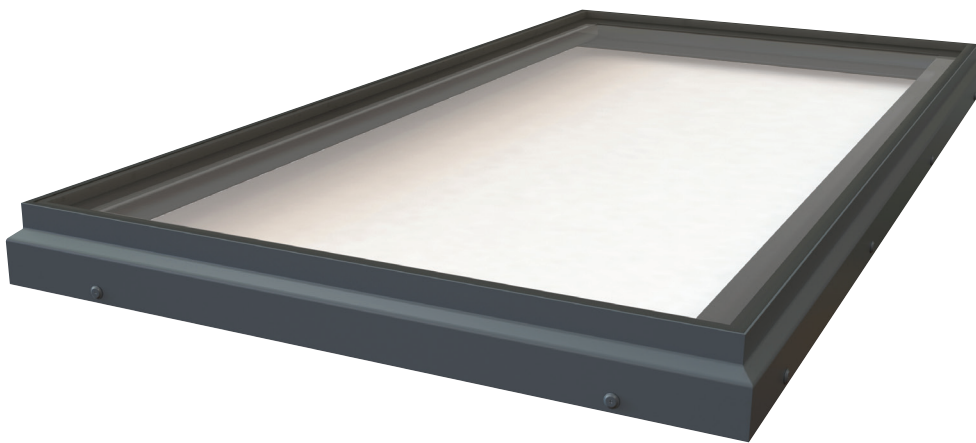


Installation Procedure for Fixed Single Pane Flatglass Rooflights

- ▶ Flatglass rooflights must be stored and transported flat



Tools Required:

- ▶ Drill



- ▶ No.25 TX Torx Bit



- ▶ Knife

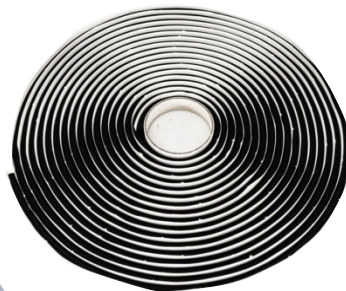


- ▶ 3mm Drill Bit



Installation Pack:

- ▶ Butyl Tape



- ▶ Fixing Screws

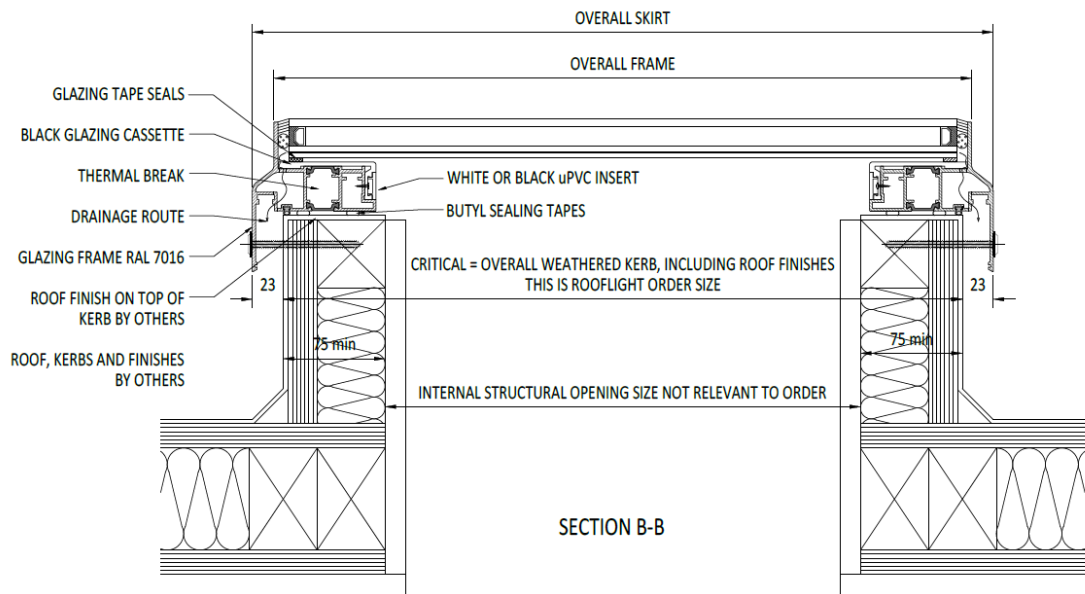


Installation Guide

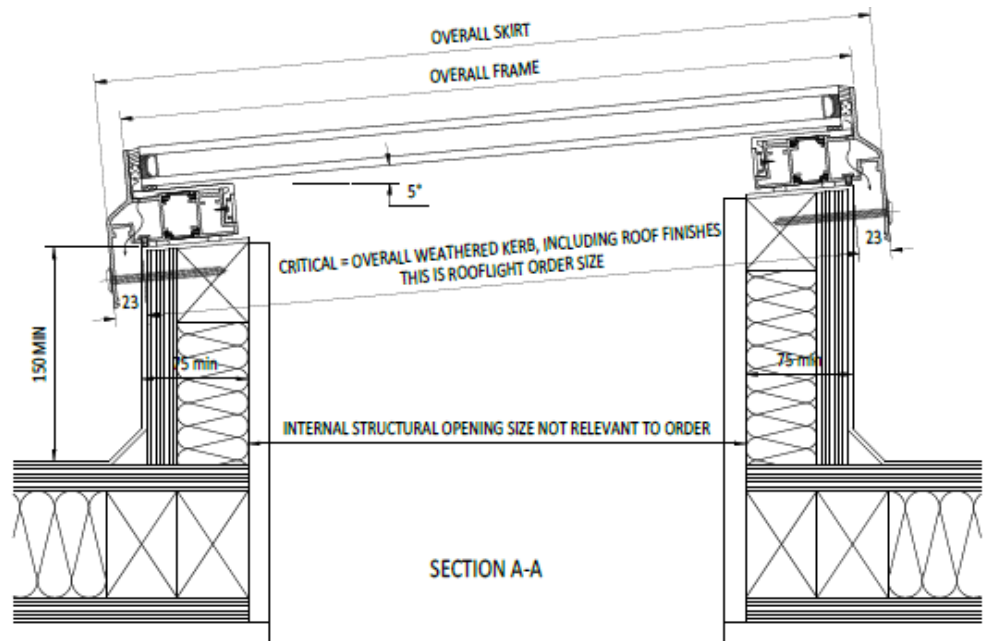
V.01-2019

Installation Procedure:

- ▶ 1. Check size of rooflight and the size of the external kerb to make sure the rooflight will fit over the kerb. The rooflight must not be forced down over the kerb as this will cause the frame to twist which may adversely affect the glass. There should be at least 10mm between inside face of frame and finished kerb.



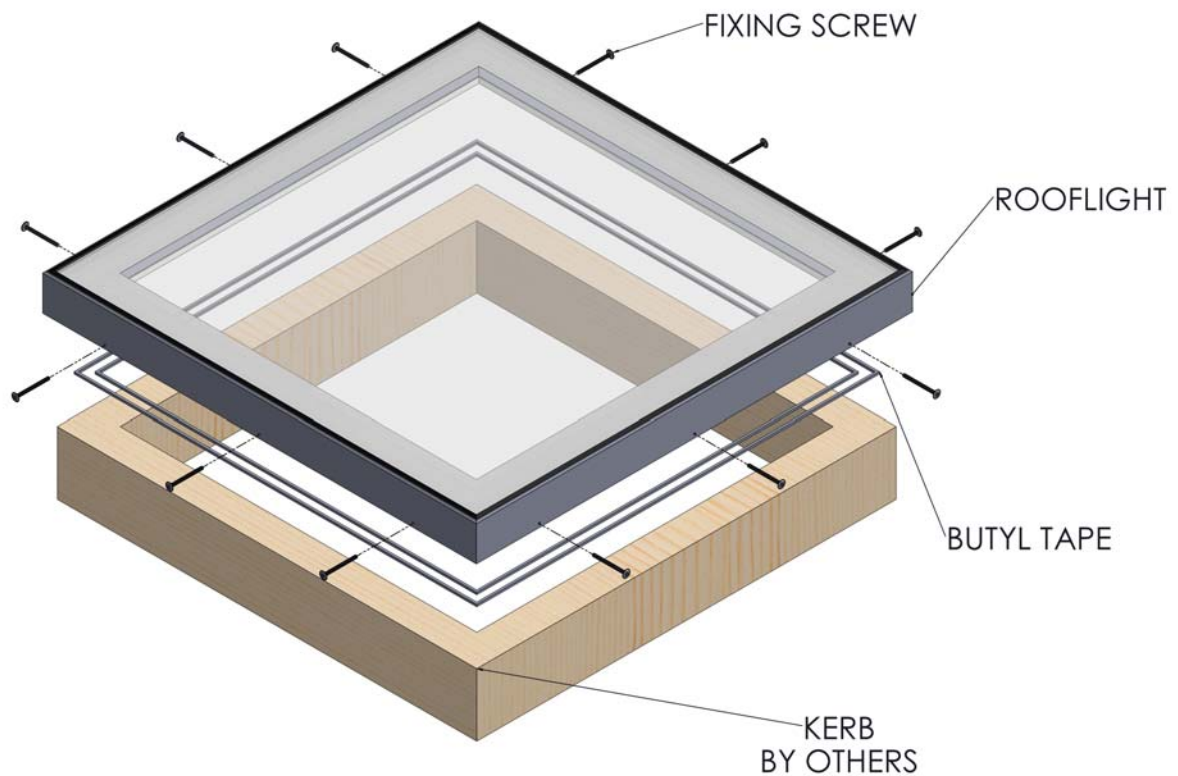
- ▶ 2. Check that the kerb has been constructed with a min 5° fall to help shed water, and that the kerb top is level and in one continuous plane (this is most important as this could affect drainage).



Installation Guide

V.01-2019

- ▶ **3.** Position one or two beads of butyl tape to the underside of the fixing frame, dependent on quality of kerb finish. Alternatively, silicone or foam seal can be used but this is not supplied with the rooflight.
- ▶ **4.** Position the rooflight onto the top of the kerb ensuring the butyl tape or seal is in full contact with the kerb top around the full perimeter.
- ▶ **5.** Using the fixing screws supplied, fix the frame to the kerb horizontally through the fixing holes pre-drilled in the lower part of the perimeter frame. Make sure to pilot drill the kerb fixing holes with the 3mm drill bit so that the stainless steel screw heads do not shear off.
- ▶ **6. PLEASE NOTE:** Once the rooflight has been installed all the protective film should be removed on the day of installation. The protective film, which has no UV protection, will become brittle and difficult to remove over time and may damage the paint if left for prolonged periods.



Installation Procedure for Fixed Multi-Pane Flatglass Rooflights

Installation Pack:

▶ Machine Screws



▶ Silicone



▶ Butyl Tape



▶ Fixing Screws



▶ Backer Rod



Tools Required:

▶ Drill



▶ No.25 TX Torx Bit



▶ Knife



▶ 3mm Drill Bit



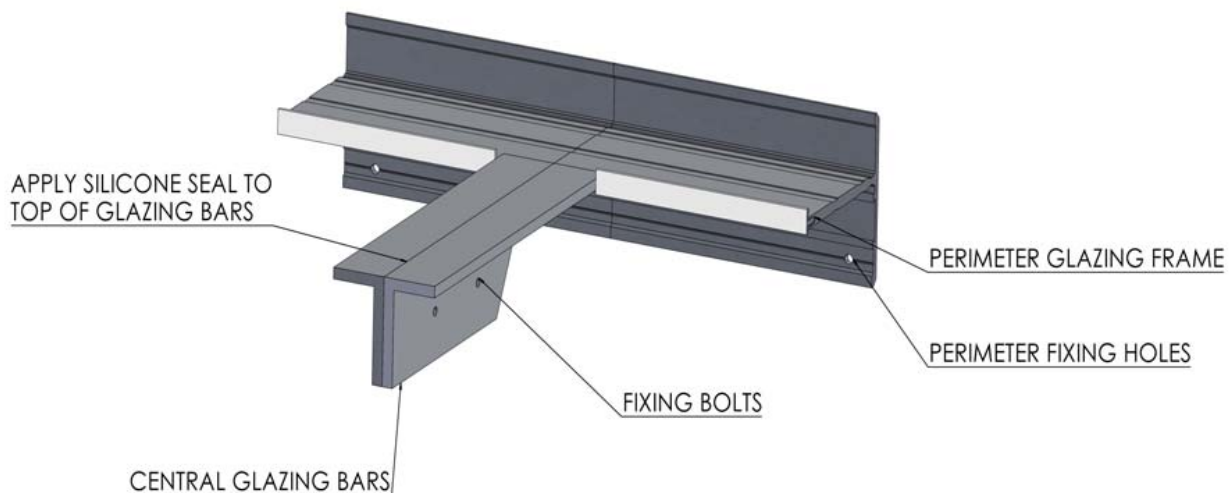
Installation Procedure:

- ▶ **1.** Check size of rooflight and the size of the external kerb to make sure the rooflight will fit over the kerb. The rooflight must not be forced down over the kerb as this will cause the frame to twist which may adversely affect the glass. There should be at least 10mm between inside face of frame and finished kerb.
- ▶ **2.** Check that the kerb has been constructed with a min 5° fall to help shed water, and that the kerb top is level and in one continuous plane (this is most important as this could affect drainage).
- ▶ **3.** Position one or two beads of butyl tape to the underside of the fixing frame, dependent on quality of kerb finish. Alternatively, silicone or foam seal can be used but this is not supplied with the rooflight.

Installation Guide

V.01-2019

- ▶ 4. Working from right to left, position an end rooflight panel onto the top of the kerb ensuring the butyl tape or seal is in full contact with the kerb top around the full perimeter.
- ▶ 5. Locate the first of the middle sections of the rooflight and position it next to the end section, slotting the glazing bars together if necessary. Line up the central glazing bar holes, before using the fixing bolts. If there are no holes pre drilled in the glazing bars, no bolts are required.
- ▶ 6. Using the fixing screws supplied, fix the frame to the kerb horizontally through the fixing holes pre-drilled in the lower part of the perimeter frame. Make sure to pilot drill the kerb fixing holes with the 3mm drill bit so that the stainless steel screw heads do not shear off.
- ▶ 7. Repeat until all sections are in place.
- ▶ 8. Once the glazing bars are bolted together cut the silicone nozzle to approx. 10mm across and run a bead of silicone along the top of the glazing bars where they meet to create a water tight seal.

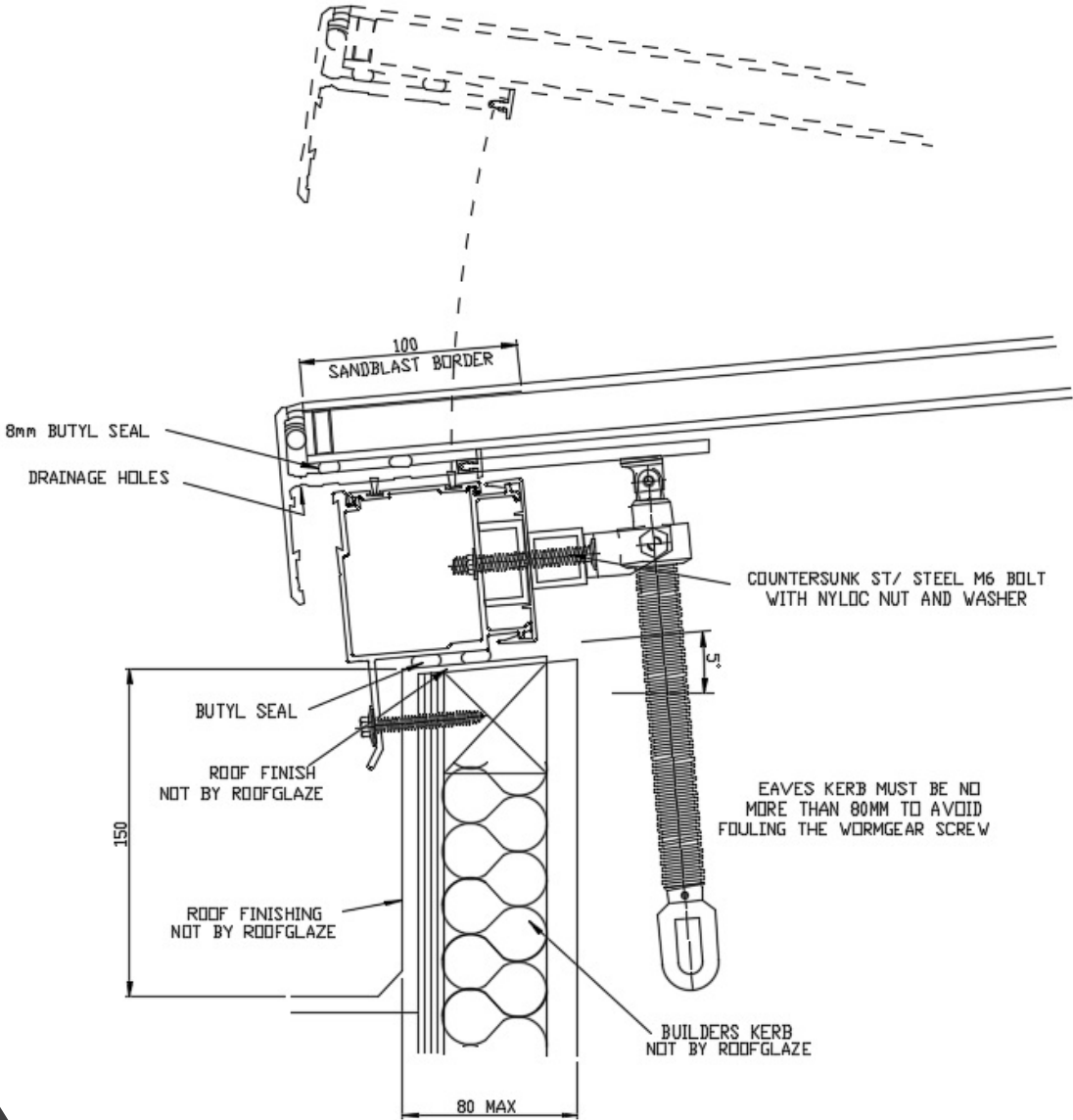


- ▶ 9. Clean and use masking tape to protect the glass at the joint between the glass panes making sure the tape is fully on the glass and not overlapping.
 - ▶ 10. Position the foam backer rod in between the abutting panes of glass.
 - ▶ 11. Pump silicone into the joint until it overlaps the height of the glass.
 - ▶ 12. Using a putty knife or similar, level the silicone into the joint.
 - ▶ 13. Remove the masking tape and tidy the silicone if required.
 - ▶ 14. **PLEASE NOTE:** Once the rooflight has been installed all the protective film should be removed on the day of installation. The protective film, which has no UV protection, will become brittle and difficult to remove over time and may damage the paint if left for a prolonged period.

Installation Procedure for Hinged Flatglass Rooflights

- ▶ **1.** The procedure for hinged rooflights is the same as for fixed. Pilot drill the kerb fixing holes and secure horizontally while bedded on foam.
- ▶ **2.** Manual worm gear spindle – if not already done so make sure the spindle is in the correct position prior to connecting to the bracket. If spindle is wound out the bracket too far pressure on the bracket may cause it to shear.
- ▶ **3.** Also, make sure the kerb with the spindle is no more than 80mm thick or it will clash with the spindle.
- ▶ **4.** If you have a rain sensor, position the sensor on the roof near the rooflight. All electrical installation must be carried out by an approved electrician.
- ▶ **5.** For electric hinged units a fly lead will be left hanging out of the frame. This will need to be connected to the building supply via the switch. All electrical installation must be carried out by an approved electrician.
- ▶ **6.** If you have a wind speed sensor it should be set to close the vent at approx. 14m/s or 49km/h.

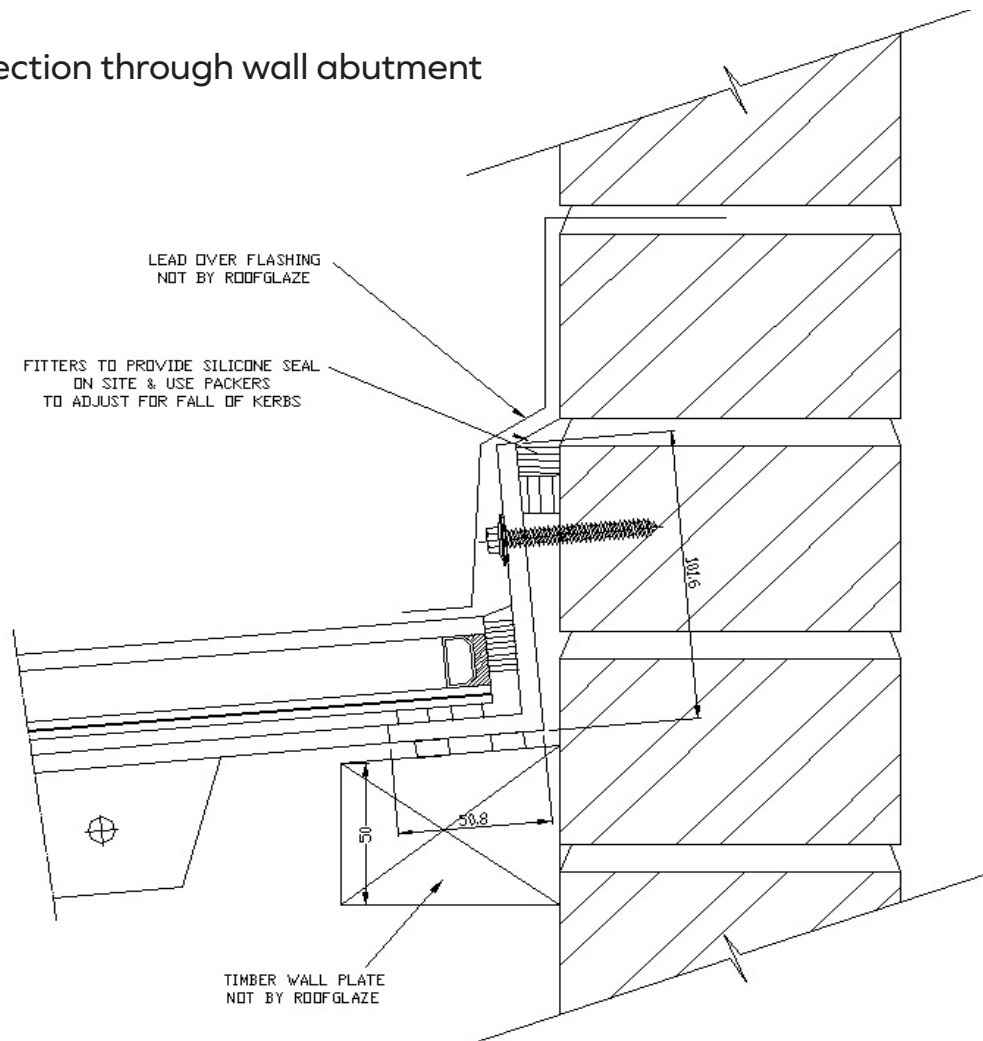
► Sketch section through eaves kerb with manual worm gear spindle



If your rooflight has a wall abutment you will need to seat the rooflight 5mm away from the wall, on butyl which you've already placed on top of the wall plate.

Then provide a silicone seal between the wall and the top of the wall abutment angle. Then screw the rooflight to the wall. Finally, flash over the wall abutment with lead or similar to complete the installation.

► Sketch section through wall abutment



The uPVC cover shroud designed to hide the internal glazing bars will be supplied over length to be measured for fit on site by the installers.

It is made from very thin material so we suggest you use a wedge to support the walls of the shroud when cutting it.