

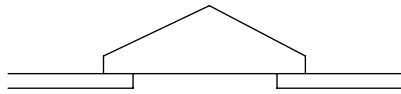
**IF INCLUDING BLACKOUT BLINDS**

Black out blind option

When blinds are selected, plaster up to blind trim

When no blind is selected, plaster stop bead to finish flush with the top of the inside profile (as illustrated)

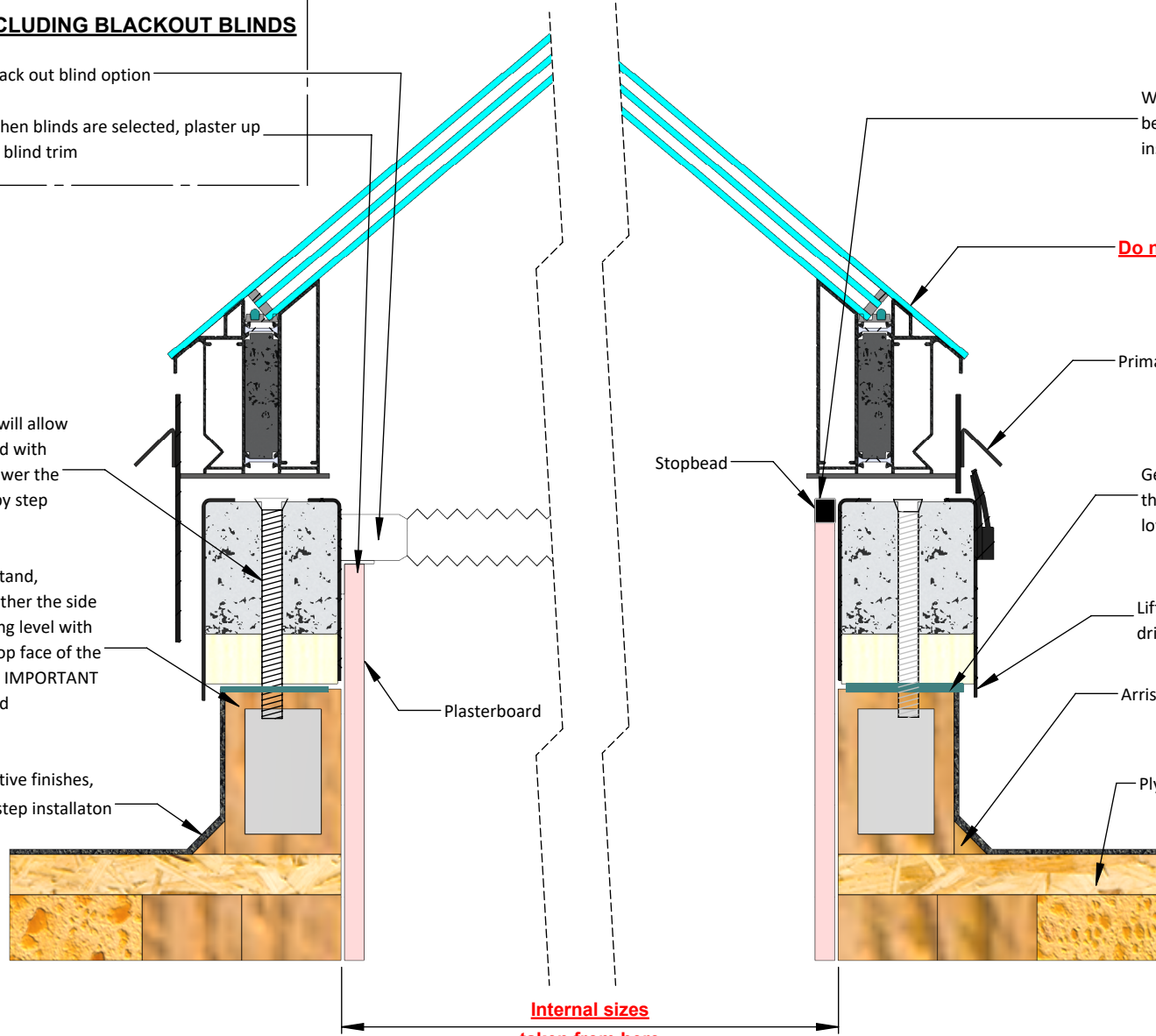
Level timber upstand required



Pre-formed screw holes within upstand will allow you to fix the unit to your timber upstand with screws provided. This requires you to power the rooflight before opening - refer to step by step installation guide

Maximum 70mm width timber upstand, minimum height of 30mm. Pre-weather the side face of your timber upstand finishing level with the top (as illustrated). Leave the top face of the timber upstand as exposed timber. IMPORTANT do not exceed 70mm width to avoid compromising drip detail.

EPDM roof finish, for alternative finishes, please refer to your step by step installation guide



**Internal sizes**  
taken from here  
(size ordered = size of timber structural opening)

**ROOF MAKER**  
WORLD CLASS ROOFLIGHTS

**ROOF-maker**

1 Pinfold Road , Thurmaston  
Leicester, LE4 8AS  
Tel: 0116 269 6297  
Fax: 0116 269 6291  
Email: sales@roof-maker.co.uk

**Title:** TRIPLE GLAZED PYRAMID AND SLIMLINE SLIDING ROOF LANTERN - TYPICAL FITTING GUIDELINES - WARM DECK ROOF

THIS DRAWING IS FOR REFERENCE ONLY. PLEASE REPORT ANY DISCREPANCIES TO THE DESIGNER BEFORE ANY WORK COMMENCE. ALL DIMENSIONS ARE IN mm. ALL DIMENSIONS TO BE CHECKED ON SITE BEFORE ANY WORK COMMENCE.

**Date:** 17/01/18

**Drawn:** CS

**Checked:** SM

**Scale:**

Approx 1:4 @A4