

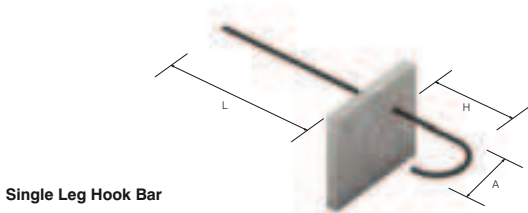
Standard Units

Although most Startabox units are made to order using the engineers original rebar details, there are occasions when time pressures do not allow this and a quicker supply is required. Last minute drawing changes or rescheduling of pour sequences can require another solution.

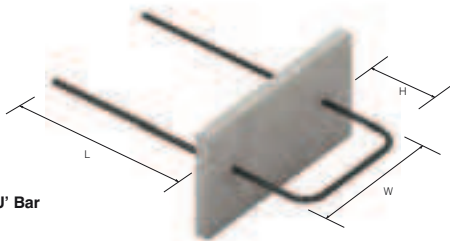
For this reason, a full range of Startabox standard units are kept in stock for rapid dispatch. The range covers a wide variety of wall and slab thicknesses and caters for the most popular bar diameters and bar centres. Standard units can be easily ordered using the relevant stock code.

Standard units containing 12mm rebar are supplied with 500mm lap bars.

Standard units containing 16mm rebar are supplied with 650mm lap bars.

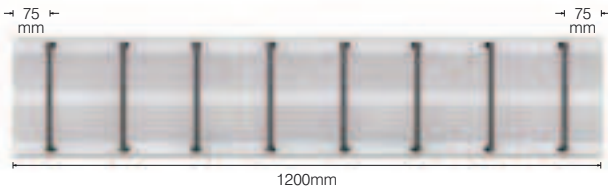


Single Leg Hook Bar

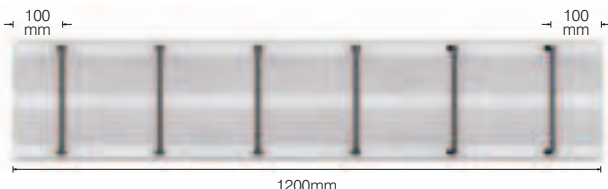


Double Leg 'U' Bar

Bar Spacings



150mm Centres



200mm Centres

Dimensions	Bar Type	Bar Spacing mm	Lap'L' mm	Stock Code
	C12	150	500	S801215
	C12	200	500	S801220
	C12	150	500	S111215
	C12	200	500	S111220
	C12	150	500	S141215
	C12	200	500	S141220
	C12	150	500	S161215
	C12	200	500	S161220
	C12	150	500	S191215
	C12	200	500	S191220
	C12	150	500	S241215
	C12	200	500	S241220
	C16	150	650	S111615
	C16	200	650	S111620
	C16	200	650	S161620
	C16	150	650	S191615
	C16	200	650	S191620
	C16	150	650	S241615
	C16	200	650	S241620