

## Superior PVC beads for rendering, plastering, dry lining, EWI and ETICS



Bellcast / drip beads



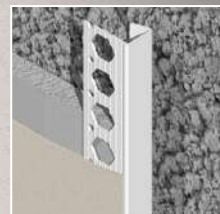
Corner / angle beads



Movement / expansion joints



Stop beads



Dry lining beads



EWI / ETICS beads



Renderplas PVC beads provide high performance solutions to Part L compliance, with a high recycled content creating an 'excellent' Ecopoint rating, backed by BBA approval on all external products.

# Renderplas



## About Renderplas and PVC beads

Renderplas was formed in 1990 to offer the construction industry a brand new concept in beading for rendering, plastering and dry lining applications.

As the UK's first manufacturer of PVC beads, Renderplas leads the field in cost-effective, non-corrosive PVC beading products that address what many regard as the aesthetic and performance shortcomings of traditional metal beads. Innovations in design and manufacturing techniques have now made it possible to produce PVC beads that can outperform and outlast even stainless steel beads.

### Why choose Renderplas?

At Renderplas we take great pride in designing and delivering robust, plasterer-friendly PVC beads that offer a wide range of benefits for contractors, architects and end users alike.

### Performance benefits

Renderplas PVC beads have a very narrow arris, making them ideal for both scratched and scraped finishes and sand and cement render applications. Our products also offer ease of handling, are safe to cut, and simple to apply, with little or no waste. And once installed, PVC beads have a high resistance to corrosion, staining and impact.

### REACH

The Registration, Evaluation, Authorisation and restriction of Chemicals (REACH) legislation controls all substances that move through the EEA, from manufacture through to the end user. Renderplas PVC beads would be non-hazardous in the watercourse or if ingested and are free from substances of very high concern (SVHCs). Our products are ecologically benign and comply with the REACH legislation.

### Accreditations

Designed and manufactured to BS EN 13914-1&2:2016 and with



BBA approval on all external products, Renderplas PVC beads provide the peace of mind that all our products are fit for purpose.

### Colour options

In addition to our standard range of white and ivory beads, Renderplas offers a choice of colours to give architects and contractors the freedom to use more vibrant through-coloured renders, whilst also eliminating the time and cost of repainting that would be required when using metal beads.

### Internal applications

Used internally, whether in conjunction with wet plastering or dry lining, Renderplas PVC beads will not stain during drying out periods and offer superior protection against impact in high traffic areas.

With such an impressive array of benefits over traditional beads, it's not surprising that PVC beads are fast becoming the first choice for renderers and plasterers across the world.



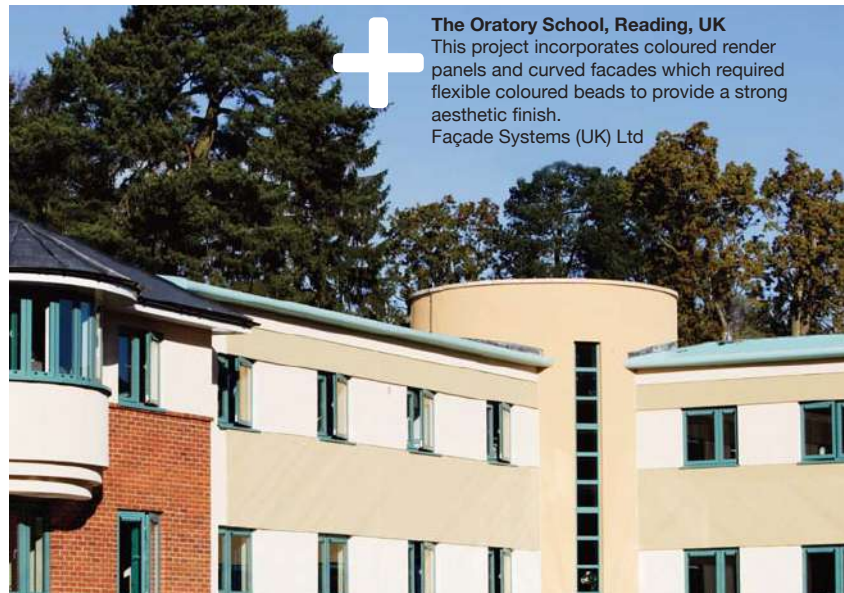
### Renderplas and the environment



Renderplas PVC beads are manufactured locally from 100% recycled materials for white, and up to 96% in other colours; offcuts are recycled, and all of the PVC we use is recyclable. Our PVC beads also assist Part L compliance by eliminating the cold bridges that could be caused by steel beads.

**Renderplas beads awarded "excellent" rating of 0.004 Ecopoints per kg installed**

Renderplas has also taken the lead in providing Ecopoint calculations for its products to assist the specifier in lowering carbon production. An independent environmental profile awarded our PVC beads an "excellent" Ecopoint rating of just 0.004 per kg installed.



### The Oratory School, Reading, UK

This project incorporates coloured render panels and curved facades which required flexible coloured beads to provide a strong aesthetic finish.  
Façade Systems (UK) Ltd



Renderplas PVC beads provide high performance solutions to Part L compliance, with a high recycled content creating an 'excellent' Ecopoint rating, backed by BBA approval on all external products.

# Renderplas

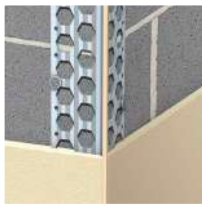
## Renderplas PVC bead range

A comprehensive range of PVC bead profiles offers cost-effective solutions for all external rendering, including sand and cement, through-coloured renders, EWI and internal plastering applications. Options include the choice of up to nine colours and beads that have alkaline resistant glass fibre reinforcement mesh already bonded into them, saving time and money on site.



### **Bellcast / drip beads**

Allow rainwater to drip clear of underlying substrate when applied at or above DPC level and above reveals.



### **Corner / angle beads**

Provide a straight arris and impact protection on plastered and rendered corners.



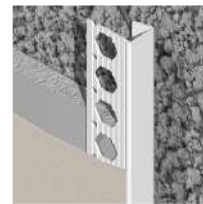
### **Movement / expansion joints**

Specified wherever there is a structural movement joint under the render or to allow for thermal movement.



### **Stop beads**

Used around door and window surrounds to prevent potential cracking or to give a clean finish to panels of render.



### **Dry lining beads**

Ensure a clean edge and protection on external corners and extremities of plasterboard.



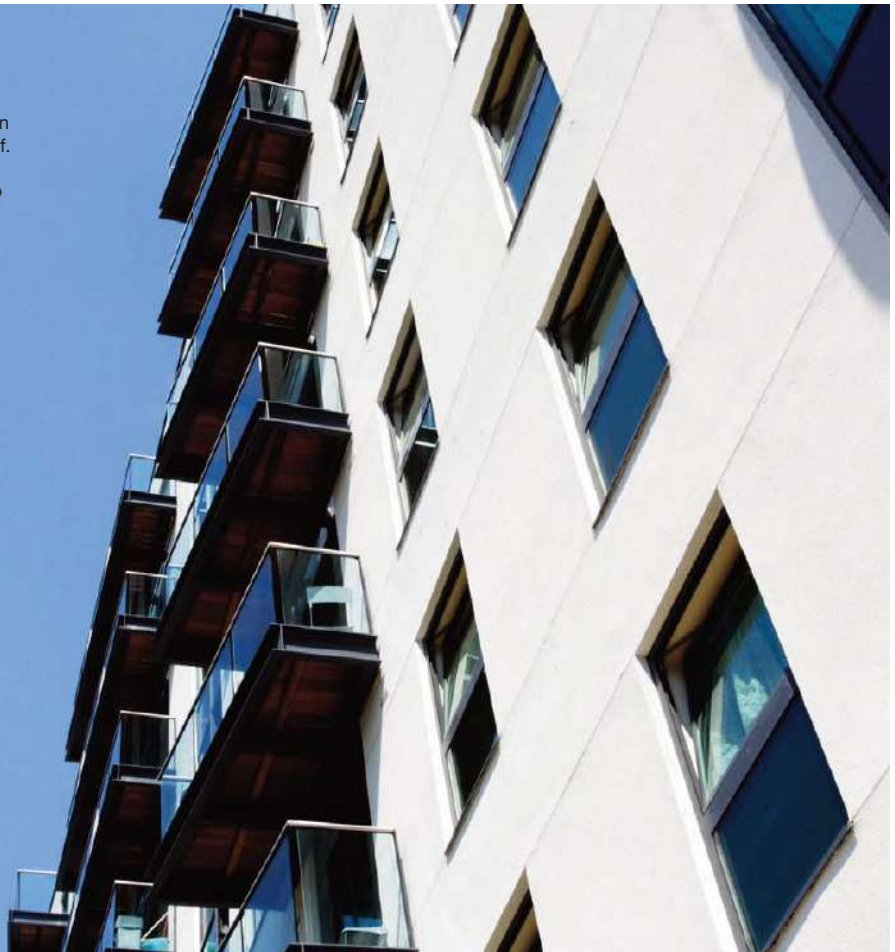
### **EWI / ETICS beads**

Designed to work with all External Wall Insulation Systems and External Thermal Insulation Composite Systems.



**Millharbour, London, UK**  
One of the desirable high spec residential buildings on Millharbour at Canary Wharf. Renderplas PVC bellcast beads provide protection to render and attractive architectural features.

Façade Systems (UK) Ltd






Renderplas PVC beads provide high performance solutions to Part L compliance, with a high recycled content creating an 'excellent' Ecopoint rating, backed by BBA approval on all external products.

## Better by design

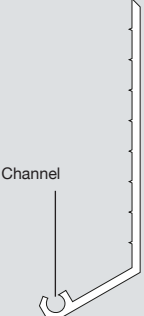
Renderplas PVC beads are specifically designed to provide a robust, cost-effective and plasterer-friendly beading solution that outperforms and is aesthetically superior to metal alternatives. All our products conform to BS EN 13914-1:2016, the standard for external rendering, and can be specified with complete confidence for all external rendering and internal plastering and dry lining applications.

### 1 Design


The superior design of Renderplas beads greatly reduces the occurrence of capillary action and therefore water ingress between the bead and the render system. Less well-designed beads can include 'channels' that may not be completely filled with render and after a few years of freeze-thaw action spalling may occur which weakens / cracks the render system.



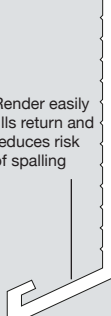
**Competitor bellcast bead**



Channel




**Renderplas bellcast bead**




Render easily fills return and reduces risk of spalling

### 2 Aesthetics

Renderplas beads are designed to provide an unobtrusive, smart installation. The extremely narrow arris makes them ideal for scratched or scraped finishes. We offer a wide choice of profiles for straight, durable joints, sharp lines and clean corners. Renderplas PVC beads are guaranteed never to rust and they will not stain like metal beads can do.

**Rusty steel bead**




**Renderplas PVC bead**

### 3 Strength

Renderplas PVC beads are impact resistant and dissipate shockwaves reducing impact damage. They can often be re-rendered without chopping out the bead, which is very unlikely in the case of metal. Renderplas' superior Y-shape design with an arrowhead arris provides the maximum render thickness and strength. Metal corners have a large folded arris, reducing render thickness at the most vulnerable point.




**Steel corner bead**

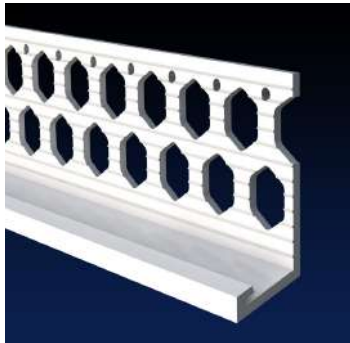



**Renderplas corner bead**



Renderplas PVC beads provide high performance solutions to Part L compliance, with a high recycled content creating an 'excellent' Ecopoint rating, backed by BBA approval on all external products.

## PVC bellcast / drip beads



Renderplas PVC bellcast / drip beads allow rainwater to drip clear of the underlying substrate when applied at or above DPC level and window heads. Our beads are designed for function and speed on all external rendering applications. Discreet but strong, all beads give a perfect finish to through-colour render and are strong enough for heavy sand and cement. Renderplas bellcast beads offer a value for money alternative to steel products and are guaranteed not to stain or corrode like galvanized steel beads, reducing spalling and impact damage.

### Application

Designed to provide a stop to the render just above the damp-proof course and above reveals to produce a straight edge, bellcast / drip beads provide protection against impact and deflect rain water. They can also be used as an architectural feature at each storey to provide a shadow.

### Performance

Renderplas plastic bellcast / drip beads offer a value for money alternative to stainless steel beads because they are made from cost-effective recycled exterior-grade, impact resistant, UV-stable PVC and are guaranteed not to stain or corrode like galvanized steel beads, reducing spalling and impact damage.

Designed to outlast their metal counterparts, plastic beads are guaranteed to be fit for purpose for the lifetime of the render and at least 25 years. Our PVC beads match the stipulations of the British and European Standard for the design requirements of metal beads and lath (BS EN 13658-2:2005), are BBA certified, Class 1Y fire rated, and are not affected by weather. The British and European Standard for the design

and application of external render (BS EN 13914-1:2016) stipulates that only PVC beads and stainless steel beads can be used in all applications including situations of high atmospheric or background moisture and high atmospheric or background salt.

### Storage, cutting and fixing

PVC beading is quick and easy to cut to length using either tin snips or a fine toothed hacksaw and is safer to handle than cut metal. Fixing is not different from steel beads and standard industry practice can be followed. Please see the installation guide for details. Store vertically away from heat and direct sunlight, or flat if supported along the entire length.

### Packing

All PVC beads are packed in robust fibreboard tubes or high strength corrugated boxes. Supplied in 2.5m lengths and in packs of 25.

### Colours

Stocked in white and ivory and seven further colours across all PVC bead profiles except B9 which is supplied in white only.

Terracotta



Salmon



Wheat



Ivory



White



Dove



Slate



Willow



Sky



### Main applications:

- Brick and blockwork
- Timber frame
- Insulation board
- Cement board
- Composite systems
- Plasterboard



### More information

Detailed product datasheets can be viewed on our website. See [www.renderplas.co.uk](http://www.renderplas.co.uk)



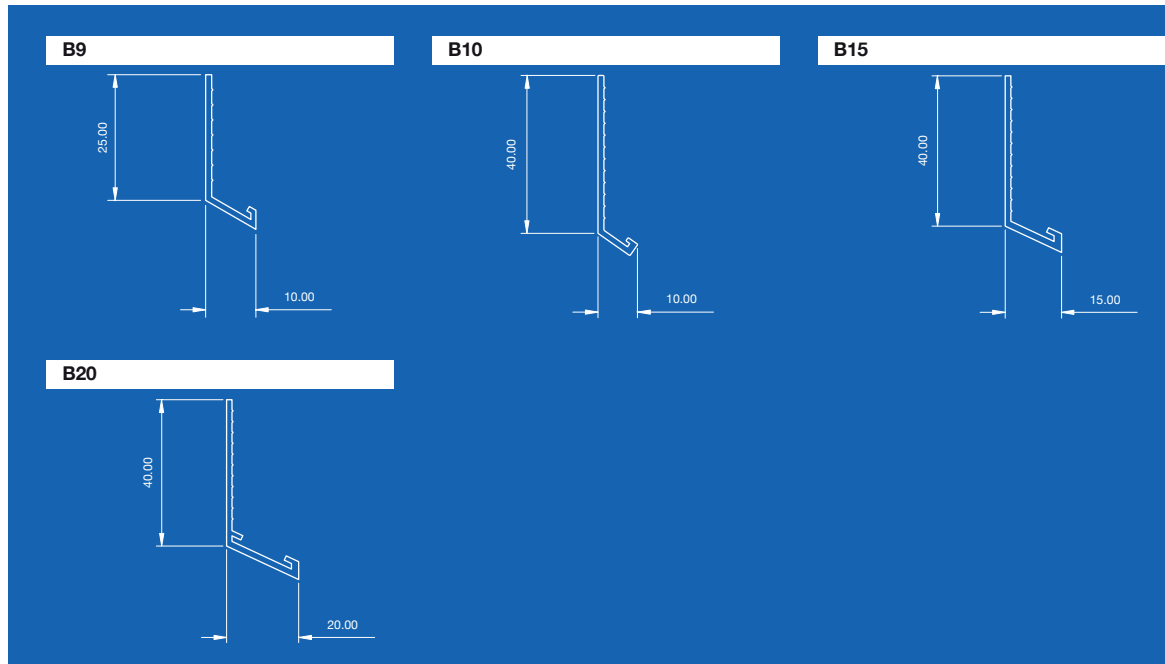
### Al Aqah Beach Resort, Fujairah, UAE

This luxury hotel is situated 90 minutes from Dubai International Airport. Famed for its year round sunshine, the United Arab Emirates is a testing environment for building products. The Renderplas PVC beads in this hotel are the natural choice as they require no extra maintenance, do not require painting and can be cleaned along with the render.



Renderplas PVC beads provide high performance solutions to Part L compliance, with a high recycled content creating an 'excellent' Ecopoint rating, backed by BBA approval on all external products.

## PVC bellcast / drip beads



All dimensions are shown in millimetres

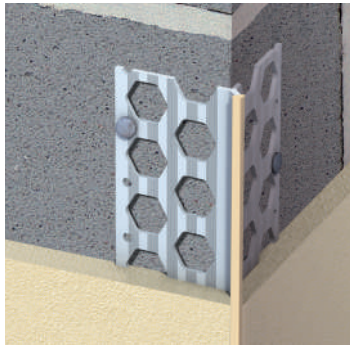
Code	Product description	Render or plaster depth (mm)	Weight per pack (kg)	Length (m)	Lengths per pack	Colour
B9	10mm PVC small wing bellcast bead	4-10	4.46	2.5	25	White
B10	10mm PVC bellcast bead	4-12	6.70	2.5	25	All 9
B15	15mm PVC bellcast bead	10-17	11.13	2.5	25	All 9
B20	20mm PVC bellcast bead	13-22	12.89	2.5	25	All 9





Renderplas PVC beads provide high performance solutions to Part L compliance, with a high recycled content creating an 'excellent' Ecopoint rating, backed by BBA approval on all external products.

## PVC corner / angle beads



Our locally manufactured PVC corner / angle beads are designed for function and speed. Suitable for external and internal rendering and plastering applications ensuring a straight edge to corners and reveals. Discreet but strong, all beads give a perfect finish to through-colour render and are more than strong enough for heavy sand and cement. Renderplas corner beads offer a value for money alternative to stainless steel products and are guaranteed not to stain or corrode like galvanized steel beads, reducing spalling and impact damage.



**Application**  
Designed for use on all rendered and plastered corners and reveals to produce a straight edge and provide protection against impact. Can also be used for internal plastering applications.

**Performance**  
Renderplas plastic corner beads / angle beads offer a value for money alternative to stainless steel beads because they are made from cost-effective recycled exterior-grade, impact resistant, UV stable PVC and are guaranteed not to stain or corrode like galvanized steel beads, reducing spalling and impact damage. Designed to outlast their metal counterparts, plastic beads are guaranteed to be fit for purpose for the lifetime of the render and at least 25 years. Our PVC beads match the stipulations of the British and European Standard for the design requirements of metal beads and lath (BS EN 13658-2:2005), are BBA certified, Class 1Y fire rated, and are not affected by weather. The British and European Standard for the design and application of external render (BS EN 13914-1:2016)

stipulates that only PVC beads and stainless steel beads can be used in all applications including situations of high atmospheric or background moisture and high atmospheric or background salt.

**Storage, cutting and fixing**  
PVC beading is fast and quick to cut to length using either tin snips or a fine toothed hacksaw and is safer to handle than cut metal. Fixing is no different from steel beads and standard industry practice can be followed. Please see the installation guide for details. Store vertically away from heat and direct sunlight, or flat if supported along the entire length.

**Packing**  
All PVC beads are packed in robust fibreboard tubes or high strength corrugated boxes. Supplied in 2.5m lengths and in packs of 6, 25 or 50 as shown in the table overleaf.

**Colours**  
6mm, 10mm and 15mm corner beads stocked in all nine colours. Full colour options on all corner bead profiles are shown in the table overleaf.

**Main applications:**

- Brick and blockwork
- Timber frame
- Insulation board
- Cement board
- Composite systems
- Plasterboard



**More information**  
Detailed product datasheets can be viewed on our website. See [www.renderplas.co.uk](http://www.renderplas.co.uk)

**Clement Park Care Home, Dundee, UK**  
Renderplas corner beads were used on corners and reveals to ensure a straight arris and to provide impact protection. Stop beads were used to prevent cracking around door and window surrounds.



**Terracotta**



**Salmon**



**Wheat**



**Ivory**



**White**



**Dove**



**Slate**



**Willow**



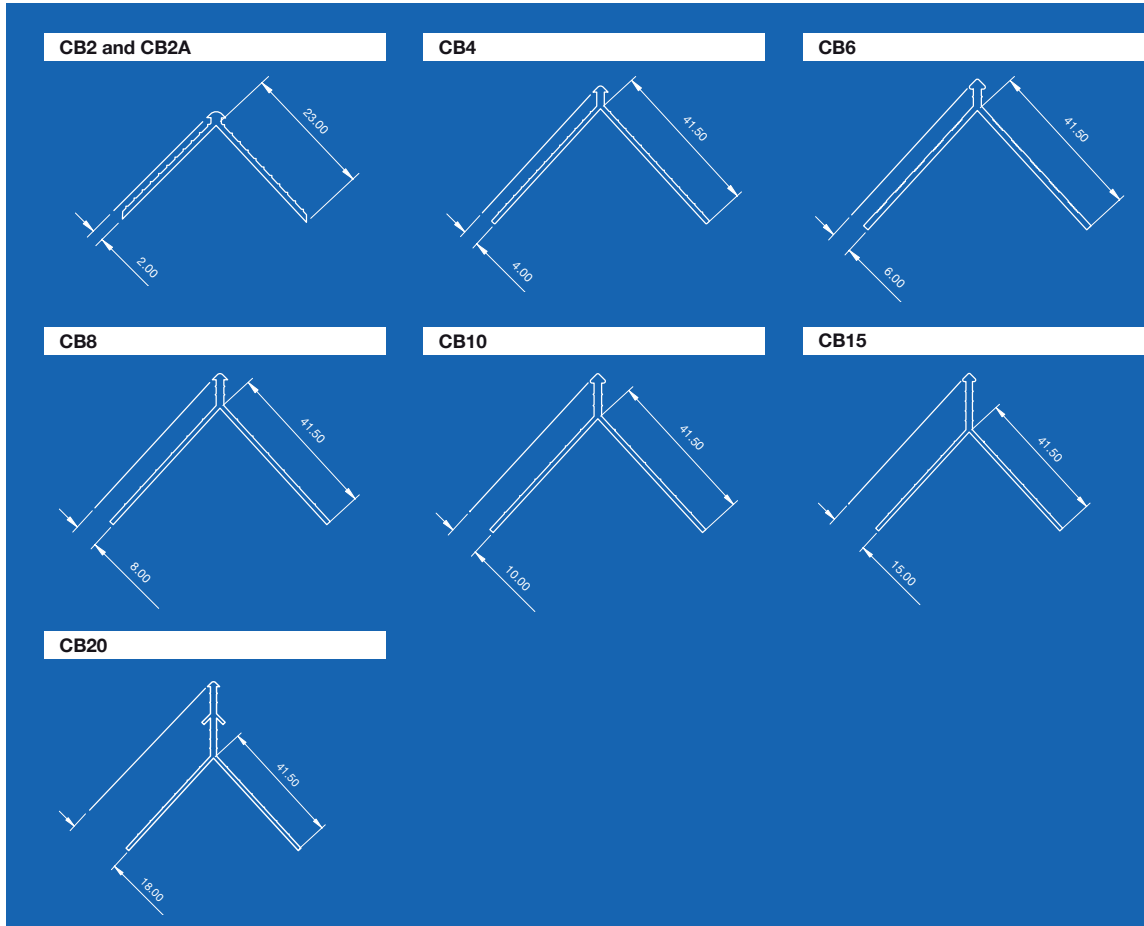
**Sky**





Renderplas PVC beads provide high performance solutions to Part L compliance, with a high recycled content creating an 'excellent' Ecopoint rating, backed by BBA approval on all external products.

## PVC corner / angle beads



All dimensions are shown in millimetres

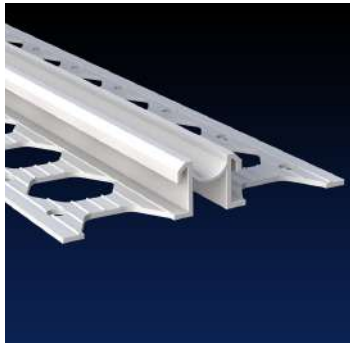
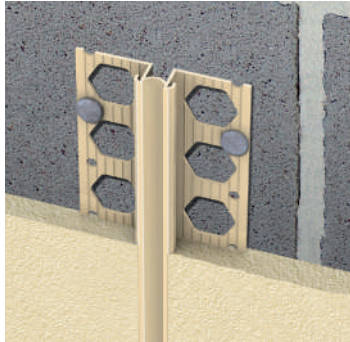
Code	Product description	Render or plaster depth (mm)	Length (m)	Lengths per pack	Colour
CB2	2mm PVC skim corner bead	2	2.5	25	White
CB2-50	2mm PVC skim corner bead	2	2.5	50	White
CB2A	PVC skim arch bead	2	2.5	25	White
CB2A-50	PVC skim arch bead	2	2.5	50	White
CB4	4mm PVC corner bead	4-6	2.5	25	White
CB6	6mm PVC corner bead	6-8	2.5	25	All 9
CB8	8mm PVC corner bead	8-10	2.5	25	White
CB10	10mm PVC corner bead	10-12	2.5	25	All 9
CB15	15mm PVC corner bead	14-17	2.5	25	All 9
CB20-6	20mm PVC corner bead	18-22	2.5	6	White/Ivory





Renderplas PVC beads provide high performance solutions to Part L compliance, with a high recycled content creating an 'excellent' Ecopoint rating, backed by BBA approval on all external products.

## PVC movement / expansion joints



Renderplas movement joints allow for structural movement and the thermal compression and expansion of render using a long-lasting flexible PVC membrane. Our locally manufactured beads are designed for function and speed on all external and internal rendering and plastering applications. Discreet but strong, all beads give a perfect finish to through-colour render as well as being ideal for sand and cement. Our movement joints are guaranteed not to stain or corrode like galvanized steel beads, reducing spalling and impact damage.

### Application

Designed to prevent cracking to render through thermal expansion and compression. Must be used over a structural movement joint once settling is complete. Can be used horizontally as a day joint to disguise a break in the render. MJ4 can be folded through 90° to form an internal corner on plasterboard.

### Performance

Renderplas plastic movement joints offer a value for money alternative to steel beads because they are made from cost-effective recycled, impact resistant, UV-stable PVC and are guaranteed not to stain or corrode like galvanized steel beads. PVC beads are guaranteed for the lifetime of the render and at least 25 years. Our beads match the stipulations of the British and European Standard for the design requirements of metal beads and lath (BS EN 13658-2:2005), are BBA certified, Class 1Y fire rated, and are not affected by weather. The British and European Standard for the design and application of external render (BS EN 13914-1:2016) stipulates that only PVC beads and stainless

steel beads can be used in all applications including situations of high atmospheric or background moisture and high atmospheric or background salt. Renderplas movement joint beads provide movement of +/- 2.5mm as certified by the BBA.

### Storage, cutting and fixing

PVC beading is quick and easy to cut to length either using tin snips or a fine toothed hacksaw. Fixing is no different from steel beads. Store vertically away from heat and direct sunlight, or flat if supported along the entire length.

### Packing

All PVC beads are packed in high strength corrugated boxes. Supplied in 2.5m lengths. White and ivory are supplied in packs of 25 lengths. Other colours are supplied in packs of 6 as shown in the table overleaf.

### Colours

Stocked in white and ivory across all profiles except MJ4 and MJ20 which are supplied in white only. Other colours are stocked for 10mm and 15mm movement joints as shown in the table overleaf.

### Main applications:

- Brick and blockwork
- Timber frame
- Insulation board
- Cement board
- Composite systems
- Plasterboard



**More information** Detailed product datasheets can be viewed on our website. See [www.renderplas.co.uk](http://www.renderplas.co.uk)



**Norwood Hall Hotel, Aberdeen, UK**  
Renderplas movement joints have provided an effective and easy to use solution for an extension to the Norwood Hall Hotel, a magnificent country house hotel and conference centre in Aberdeen.



### Terracotta



### Salmon



### Wheat



### Ivory



### White



### Dove



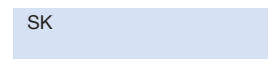
### Slate



### Willow



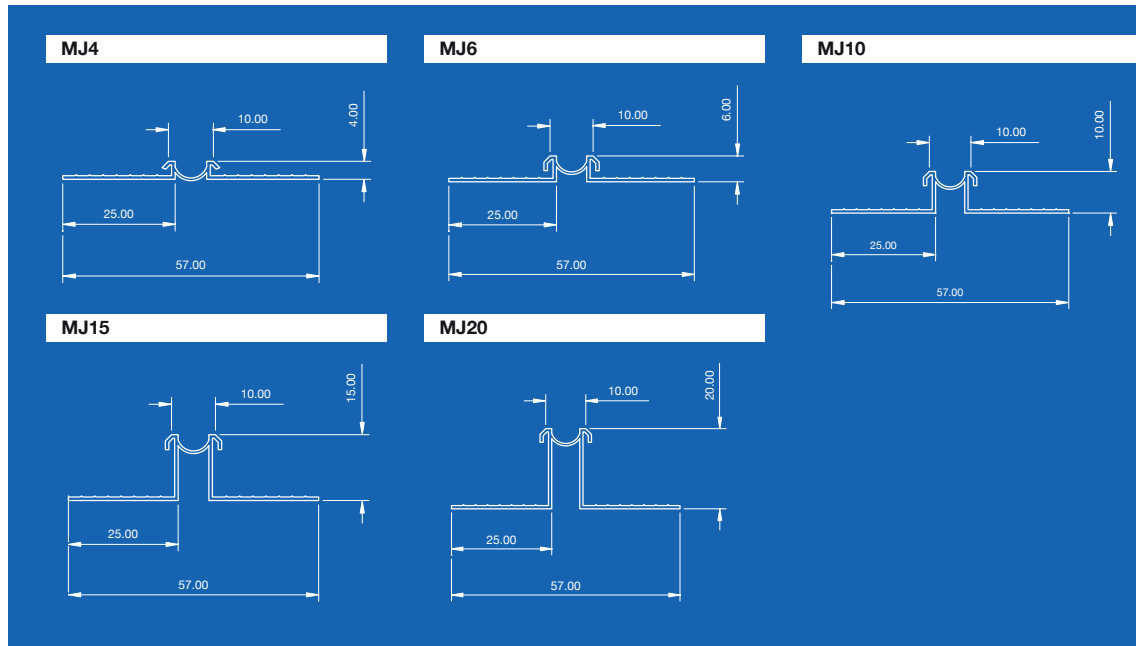
### Sky





Renderplas PVC beads provide high performance solutions to Part L compliance, with a high recycled content creating an 'excellent' Ecopoint rating, backed by BBA approval on all external products.

## PVC movement / expansion joints



All dimensions are shown in millimetres

Code	Product description	Render or plaster depth (mm)	Length (m)	Lengths per pack	Colour
MJ4	4mm PVC movement joint	4-6	2.5	25	White
MJ6	6mm PVC movement joint	6-8	2.5	25	White/Ivory
MJ10	10mm PVC movement joint	10-12	2.5	25	White/Ivory
MJ10-6	10mm PVC movement joint	10-12	2.5	6	Dove/Slate
MJ15	15mm PVC movement joint	14-17	2.5	25	White/Ivory
MJ15-6*	15mm PVC movement joint	14-17	2.5	6	7 Colours
MJ20	20mm PVC corner bead	18-22	2.5	25	White

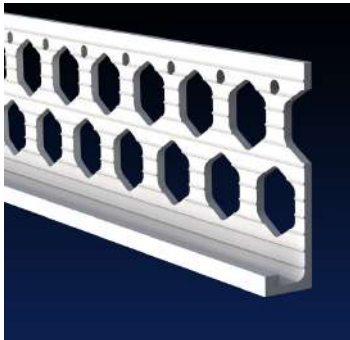
\* Bead supplied may have a different profile to that drawn above





Renderplas PVC beads provide high performance solutions to Part L compliance, with a high recycled content creating an 'excellent' Ecopoint rating, backed by BBA approval on all external products.

## PVC stop beads



Our locally manufactured PVC stop beads are designed for function and speed on all external and internal rendering and plastering applications. Discreet but strong, all beads give a perfect finish to through-colour render as well as being ideal for sand and cement. Because they are made from cost-effective recycled PVC, Renderplas stop beads offer a value for money alternative to stainless steel products and are guaranteed not to stain or corrode like galvanized steel beads, reducing spalling and impact damage.

### Application

Designed to provide a stop to the render at window and door frames and at changes to the facade to produce a straight finish and protection against impact. Can also be used for internal plastering applications.

### Performance

Renderplas plastic stop beads offer a value for money alternative to stainless steel beads because they are made from cost-effective recycled exterior grade, impact resistant, UV-stable PVC and are guaranteed not to stain or corrode like galvanized steel beads, reducing spalling and impact damage. Designed to outlast their metal counterparts, plastic beads are guaranteed to be fit for purpose for the lifetime of the render and at least 25 years. Our PVC beads match the stipulations of the British and European Standard for the design requirements of metal beads and lath (BS EN 13658-2:2005), are BBA certified, Class 1Y fire rated, and are not affected by weather. The British and European Standard for the design and application of external render (BS

EN 13914-1:2016) stipulates that only PVC beads and stainless steel beads can be used in all applications including situations of high atmospheric or background moisture and high atmospheric or background salt.

### Storage, cutting and fixing

PVC beading is quick and easy to cut to length using either tin snips or a fine toothed hacksaw and is safer to handle than cut metal. Fixing is no different from steel beads and standard industry practice can be followed. Please see the installation guide for details. Store vertically away from heat and direct sunlight, or flat if supported along the entire length.

### Packing

All PVC beads are packed in robust fibreboard boxes. Supplied in 2.5m lengths and in packs of 25.

### Colours

RS6, RS10, RS15 codes stocked in all 9 colours, RS20 in white and ivory. RS4 and all 'PS' codes are white only. Details are as shown in the table overleaf.

### Main applications:

- Brick and blockwork
- Timber frame
- Insulation board
- Cement board
- Composite systems
- Plasterboard



### More information

Detailed product datasheets can be viewed on our website. See [www.renderplas.co.uk](http://www.renderplas.co.uk)

Terracotta



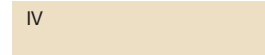
Salmon



Wheat



Ivory



White



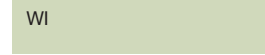
Dove



Slate



Willow



Sky



### Templar House, South Harrow, UK

The striking geometric patterns in the render at Templar House in South Harrow were finished faster using Renderplas coloured stop beads. The discreet beading creates a sharp finish.

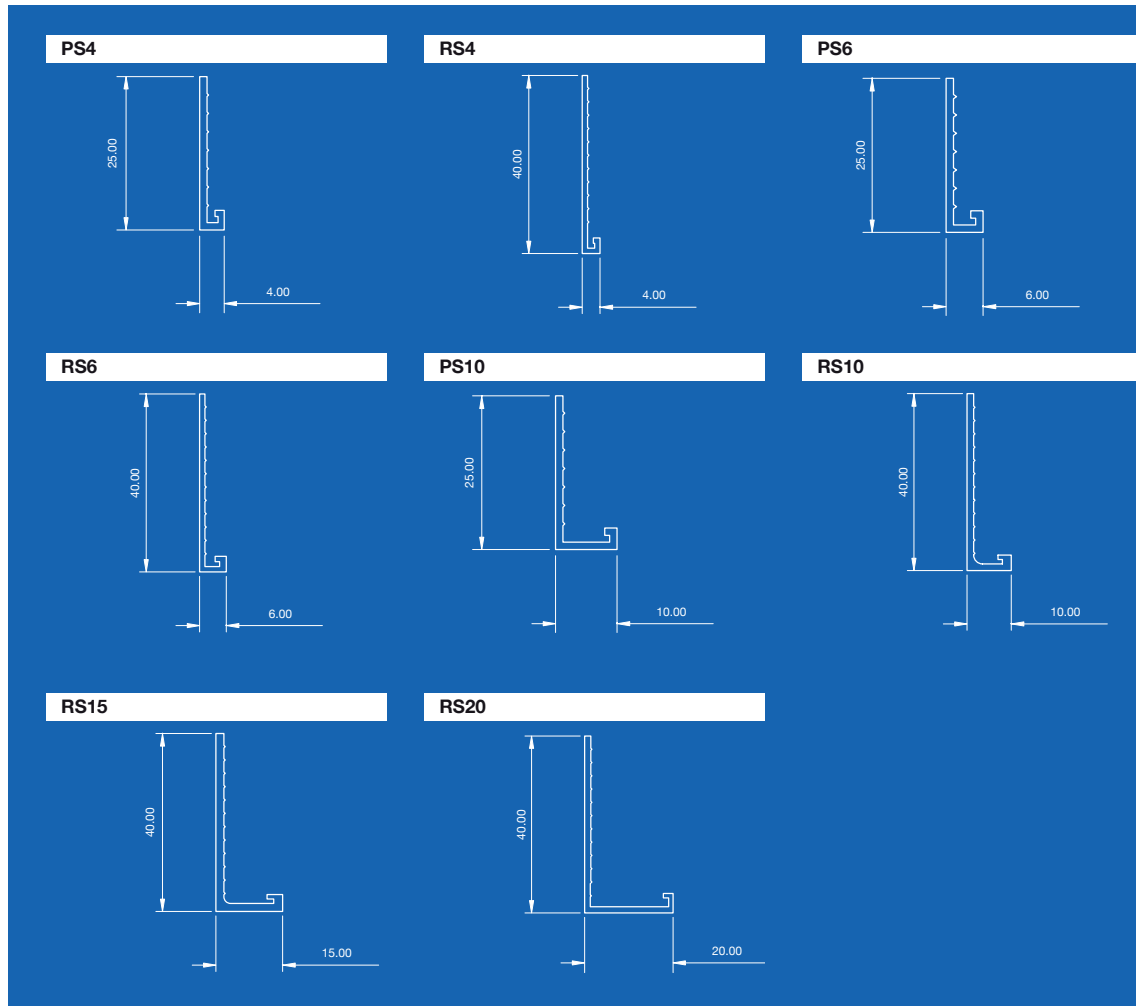
Façade Systems (UK) Ltd





Renderplas PVC beads provide high performance solutions to Part L compliance, with a high recycled content creating an 'excellent' Ecopoint rating, backed by BBA approval on all external products.

## PVC stop beads



All dimensions are shown in millimetres

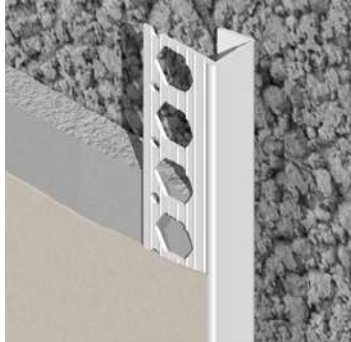
Code	Product description	Render or plaster depth (mm)	Length (m)	Lengths per pack	Colour
PS4	4mm PVC small wing stop bead	3-5	2.5	25	White
RS4	4mm PVC render stop bead	4-6	2.5	25	White
PS6	6mm PVC small wing stop bead	6-8	2.5	25	White
RS6	6mm PVC render stop bead	6-8	2.5	25	All 9
PS10	10mm PVC small wing stop bead	10-12	2.5	25	White
RS10	10mm PVC render stop bead	10-12	2.5	25	All 9
RS15	15mm PVC render stop bead	15-17	2.5	25	All 9
RS20	20mm PVC render stop bead	20-22	2.5	25	White/Ivory





Renderplas PVC beads provide high performance solutions to Part L compliance, with a high recycled content creating an 'excellent' Ecopoint rating, backed by BBA approval on all external products.

## PVC dry lining beads



Renderplas PVC dry lining beads offer the perfect solution for skim plastering and dry wall applications. Because they are made locally from cost-effective recycled PVC, they offer a value for money alternative to metal products. They are guaranteed not to stain during a lengthy drying out process or in situations with high moisture or salt such as kitchens, bathrooms and pool enclosures. They are particularly well suited to schools, prisons and hospitals as they do not pose any threat to safety, either after a heavy impact or if pulled out of the wall.

### Application

Corner beads provide a clean edge and impact protection on external corners. Arch beads create smooth curves in arched reveals. Edge beads provide a clean, attractive stop to plasterboard where it meets another finish, such as a brick wall or door frame, and prevent cracking. Architrave beads provide a shadow gap between the wall and ceilings, skirting boards and door frames.

suited to all general plasterboard applications.

### Health & Safety

PVC beads are completely safe to handle during application and do not have the razor sharp edges of cut metal. They are also preferred in schools, hospitals and prisons as they do not pose any threat to safety, either after a heavy impact or if pulled out of the wall.

### Storage, cutting and fixing

Store vertically away from heat and direct sunlight, or flat if supported along entire length. PVC beads are quick and easy to cut to length using either tin snips or a fine toothed hacksaw. They are simply fixed with nails or staples through the wing of the bead.

### Packing

All PVC beads are packed in robust fibreboard tubes or high strength corrugated boxes. Supplied in 2.5m or 3.0m lengths and in packs of 6, 25 or 50 as shown in the table overleaf.

### Colours

White in all profiles.

### Main applications:

- Brick and blockwork
- Timber frame
- Insulation board
- Cement board
- Composite systems
- Plasterboard



**More information** Detailed product datasheets can be viewed on our website. See [www.renderplas.co.uk](http://www.renderplas.co.uk)



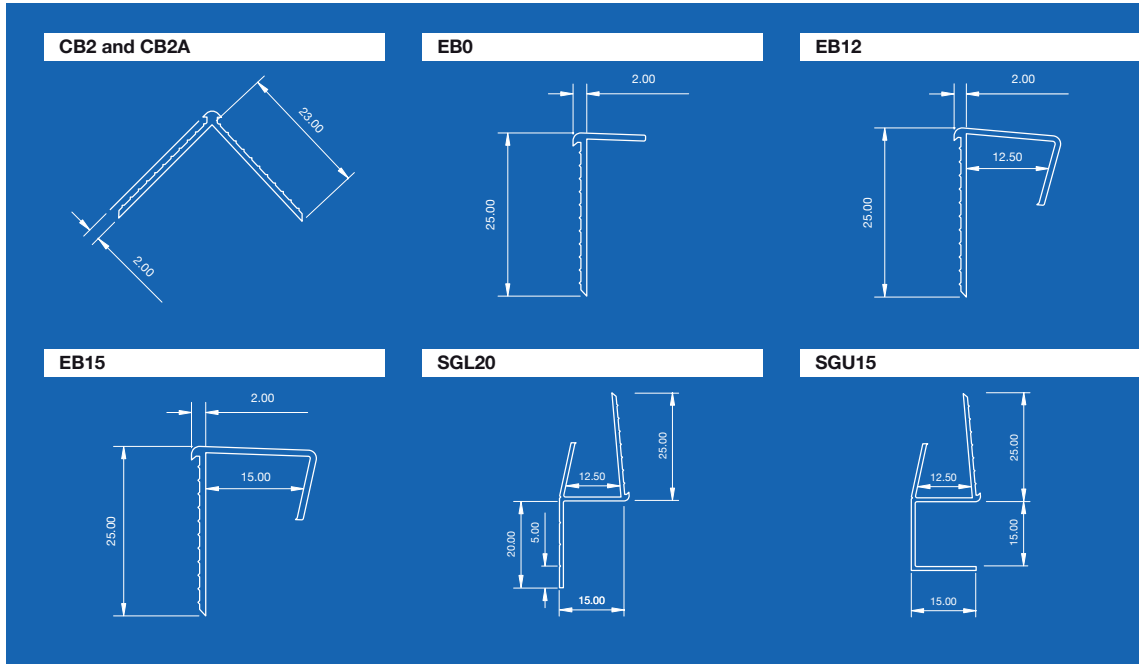
**Kentish Town Sports Centre, London, UK**  
Flexible PVC beads made the ideal choice for curved architectural features in the high moisture atmosphere of Kentish Town Sports Centre.  
David Andrews Construction Ltd





Renderplas PVC beads provide high performance solutions to Part L compliance, with a high recycled content creating an 'excellent' Ecopoint rating, backed by BBA approval on all external products.

## PVC dry lining beads



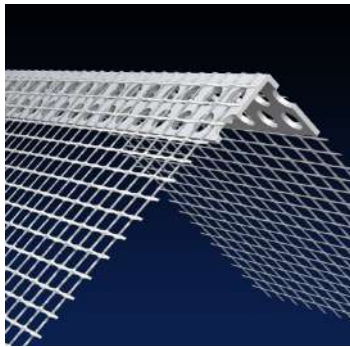
All dimensions are shown in millimetres

Code	Product description	Render or plaster depth (mm)	Length (m)	Lengths per pack	Colour
CB2	2mm PVC skim corner bead	2	2.5	25	White
CB2-50	2mm PVC skim corner bead	2	2.5	50	White
CB2A	PVC skim arch bead	2	2.5	25	White
CB2A-50	PVC skim arch bead	2	2.5	50	White
EB0	PVC flexible board edge bead	2	2.5	25	White
EB12	12.5mm PVC clip-on edge bead	2	2.5	25	White
EB12-50	12.5mm PVC clip-on edge bead	2	2.5	50	White
EB15	15mm PVC clip-on edge bead	2	2.5	25	White
EB15-50	15mm PVC clip-on edge bead	2	2.5	50	White
SGL20-6	PVC architrave shadow gap 'L' profile	2	3.0	6	White
SGL20	PVC architrave shadow gap 'L' profile	2	3.0	25	White
SGU15-6	PVC architrave shadow gap 'U' profile	2	3.0	6	White
SGU15	PVC architrave shadow gap 'U' profile	2	3.0	25	White



Renderplas PVC beads provide high performance solutions to Part L compliance, with a high recycled content creating an 'excellent' Ecopoint rating, backed by BBA approval on all external products.

## EWI / ETICS beads & accessories



Renderplas EWI & ETICS beads are designed to work with all External Wall Insulation Systems (EWI) and External Thermal Insulation Composite Systems (ETICS). Made from high-quality PVC and incorporating alkaline resistant glass fibre reinforcement mesh, Renderplas beads are ideally suited for use with all insulation panels and boards. The comprehensive range contains each type of bead needed to make an effective insulation system and can be combined with Renderplas EWI accessories to create unique insulation installations.

### Application

EWI beads add strength and form to facades insulated with render and insulating panels. Each of the components in the Renderplas EWI range is essential to the success of a system; from the reinforcement that a corner mesh bead gives a fragile surface, to the flexibility that a reveal bead allows when the wind buffets a window – the integrity of the whole system is never compromised.

### Health & Safety

PVC beads are completely safe to handle during application and do not have the razor sharp edges of cut metal. They are also preferred in schools, hospitals and prisons as they do not pose any threat to safety either after a heavy impact or if pulled out of the wall.

### Storage, cutting and fixing

Store horizontally away from heat and direct sunlight and supported along their entire length. Renderplas EWI beads are quick and easy to cut to length using either tin snips or a fine toothed hacksaw. They are simply fixed with plastic pins through the wing of the bead.

### Packing

All EWI beads and accessories are packed in recyclable corrugated cardboard boxes or polythene packing. Product sizes and quantities per pack vary as shown in the table overleaf.

### Colours

All EWI and ETICS beads are white and can be painted with waterbased paint.

### Main applications:

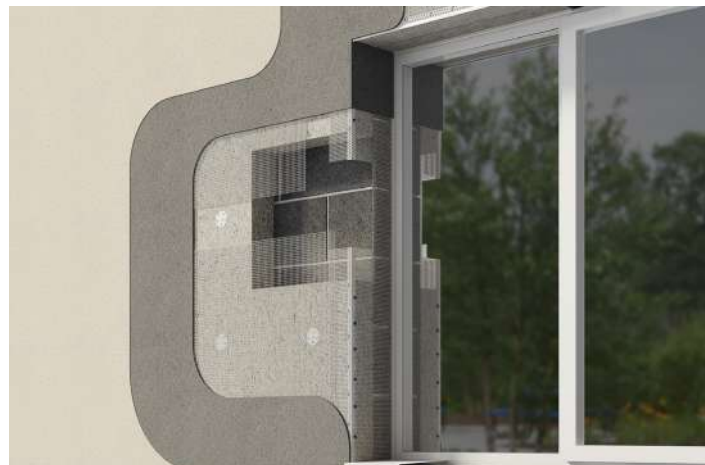
- Brick and blockwork
- Timber frame
- Insulation board
- Cement board
- Composite systems
- Plasterboard



**More information** Detailed product datasheets can be viewed on our website. See [www.renderplas.co.uk](http://www.renderplas.co.uk)



**Cut away depiction of a typical EWI system.** Renderplas EWI beads and accessories help gain a perfect and robust finish for all rendered insulation systems.



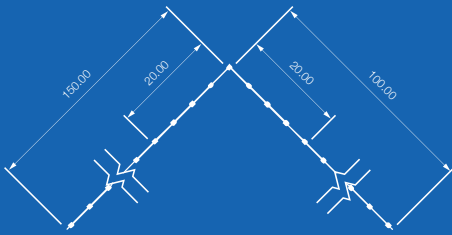


Renderplas PVC beads provide high performance solutions to Part L compliance, with a high recycled content creating an 'excellent' Ecopoint rating, backed by BBA approval on all external products.

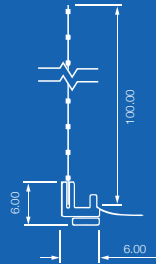
# Renderplas

## EWI / ETICS beads & accessories

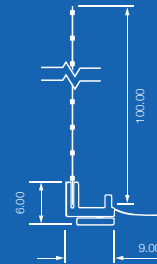
**CB0MESH**



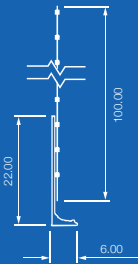
**RB6MESH**



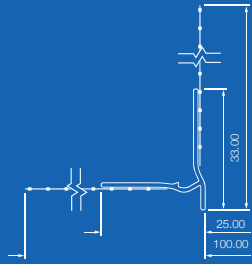
**RB9MESH**



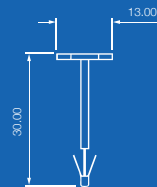
**RS6MESH**



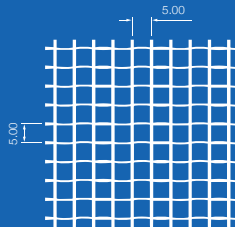
**WDCMESH**



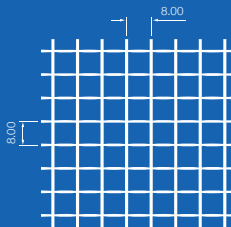
**PINS-200**



**M160EU**



**M220EU**



All dimensions are shown in millimetres

Code	Product description	Render or plaster depth (mm)	Length (m)	Lengths per pack	Colour
CB0MESH	PVC EWI corner bead 150x100mm mesh	All depths	2.5	50	White
RB6MESH	6mm PVC EWI reveal bead 100mm mesh	6	2.4	50	White
RB9MESH	9mm PVC EWI reveal bead 100mm mesh	9	2.4	50	White
RS6MESH	6mm PVC EWI stop bead 100mm mesh	6	2.5	25	White
WDCMESH	EWI Window head drip bead	6-9	2.0	25	White
PINS-200	Fixing pins for insulation board	All depths	0.03	200	White
M160EU	Glass fibre mesh weave 5mm x 5mm x 160g/m <sup>2</sup> 1m wide	All depths	50	1	White
M160EU-30	30 rolls of glass fibre mesh weave 5mm x 5mm x 160g/m <sup>2</sup> 1m wide	All depths	50	30	White
M220EU	Glass fibre mesh weave 8mm x 8mm x 220g/m <sup>2</sup> 1m wide	All depths	50	1	White



Renderplas PVC beads provide high performance solutions to Part L compliance, with a high recycled content creating an 'excellent' Ecopoint rating, backed by BBA approval on all external products.

## Installation guide

Renderplas PVC beads are all made locally from exterior grade UV-resistant PVC so they can be installed both inside and out. They are quick and easy to install and perfect for all renders including sand and cement. Standard industry practice can be used on blockwork, timber frame and external wall insulation systems to cut and fix the beads, which are safer to handle than cut metal.

### Blockwork

On blockwork, beads are set onto render dabs to the required depth and plumbed straight. Adhesive mortar can also be used for faster drying and to prevent slipping. If it's not possible to install them using dabs, Renderplas beads can be fixed with non-corrosive mechanical fixings. Nail clouts or hammer-in plug fixings are suitable for this.

### Timber frame and external wall insulation systems

On timber frame and external wall insulation systems, there is no need to set the beads onto render or adhesive mortar if the surface is level. Suitable fixings should be chosen depending on the background.



**1** Assess the substrate for large irregularities. These should be dabbled out with mortar which is then allowed to set hard prior to application of beading.



**2** Cut beads to the required length. Tin snips are normally used, or a fine toothed saw for precision mitres or cutting larger movement joints.



**3** Trowel on render dabs onto the background surface. Adhesive mortar can be used instead to increase the level of grip and reduce slipping.



**4** Set stop beads into the render dabs and push into reveals against window and door frames. Push corner beads onto external corners and tap to level.



**5** Once the beads are aligned, apply render over the wings and allow to set hard.



**6** Fix bellcast beads onto a continuous line of render dabs, or better still, onto adhesive mortar to prevent slipping.



Installation guide continues overleaf





Renderplas PVC beads provide high performance solutions to Part L compliance, with a high recycled content creating an 'excellent' Ecopoint rating, backed by BBA approval on all external products.

# Renderplas



**7** Alternatively nail clouts or hammer-in plug fixings can be used along the length of the bellcast bead every 300-700mm.



**8** The beads are rigid enough for one person to fix alone. When using hammer-in fixings, the strong arris helps prevent the bead from deflecting.



**9** At a change of finish, stop beads can be fixed either mechanically or onto render or mortar dabs.



**10** Leave a gap of 8-14mm between bellcast beads at a movement joint and fix the bead over the top on render dabs, adhesive mortar or with mechanical fixings and plumb straight.



**11** Once the render dabs or mortar have set hard, the system is ready for rendering.



**12** Where beads meet, compound mitres give the best even finish especially in highly visible areas, but wings can be overlapped instead to save time.



**13** Sand and cement render is applied to the required depth. Through-colour render is applied 2-3mm thicker than the required finish.



**14** Care should be taken to push the render into the edges of the beading to eliminate air pockets.



**15** When scraping back through-colour render, take care not to make contact with the flexible membrane on the movement joint as this will cause it to fail.



**16** The render should be left level with the edges of the beads which are exposed to give a neat finish.



**17** Movement joints come with a protective strip over the flexible membrane. This is removed as the render is going off but before it sets hard.



**18** All beads can be wiped down where necessary. The end result is a superior finish, even without painting.



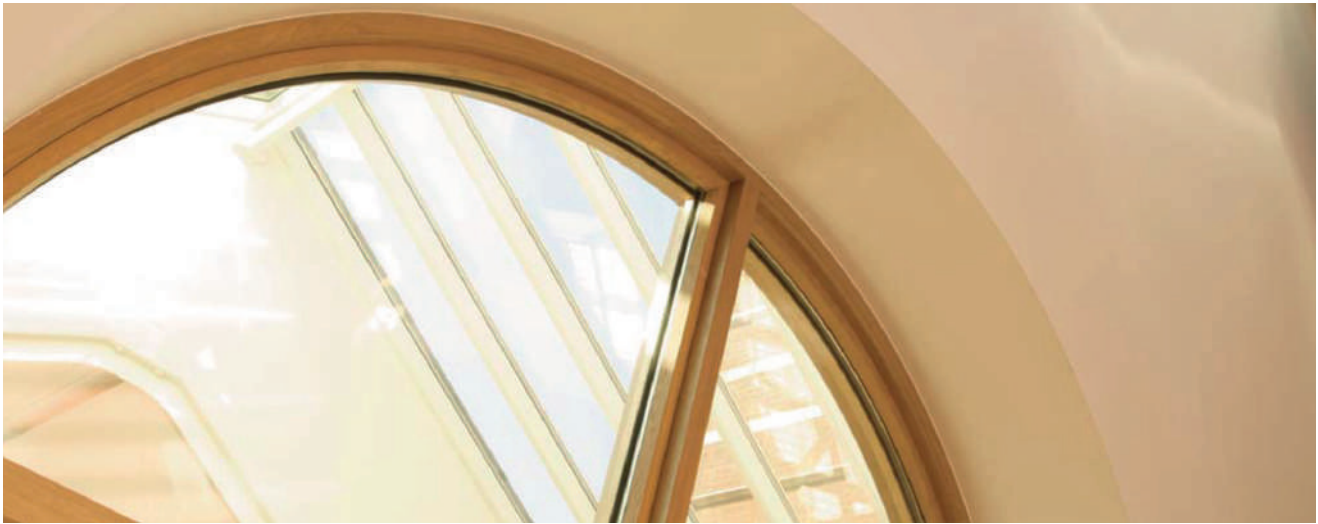
Renderplas PVC beads provide high performance solutions to Part L compliance, with a high recycled content creating an excellent Ecopoint rating, backed by BBA approval on all external products.

# Renderplas

## Case studies



## Case study: PVC beads perform in London projects



Renderplas PVC beads for rendering, plastering and drylining are exhibiting their benefits at London's Victoria and Albert Museum and a number of other prestigious London projects by David Andrews Construction, a leading specialist in high-quality trade finishes. The award-winning contractor has used over 3,000 metres of Renderplas beading for various new-build and refurbishment contracts, from hotels, luxury

homes and leisure centres to one of the capital's most popular museums. Renderplas is able to assist distributors with direct-to-site deliveries which also save the contractor valuable time and resources.

versatile and perform equally well with standard and specialist plasters and rendering systems," he comments. "Their flexibility compared with metal alternatives is ideal for curved rendering, such as arches, which were a feature in a recent refurbishment project at the Victoria and Albert Museum."

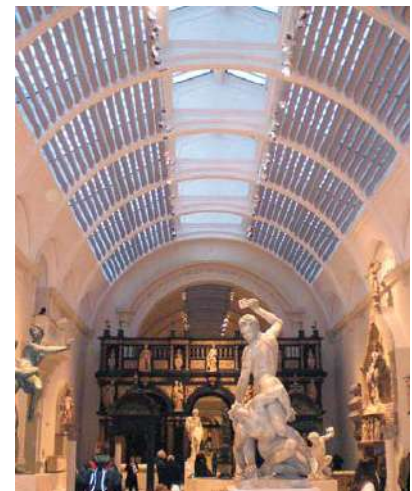
David Andrews Construction also recommended Renderplas beads for its plasterwork renovation

Angle and stop beads from the Renderplas range are providing a highly durable beading solution on curved bulkheads around the indoor pool at the Sports Centre. "Being PVC, Renderplas beads are not affected by atmospheric corrosion so will outlast galvanised metal beading in this type of environment" says Ian Englishby.

"Their flexibility compared with metal alternatives is ideal for curved rendering, such as arches"

homes and leisure centres to one of the capital's most popular museums. Renderplas is able to assist distributors with direct-to-site deliveries which also save the contractor valuable time and resources.

sub-contract in high moisture areas at the Kentish Town Sports Centre, which has recently been restored to its former Victorian splendour and enhanced with new facilities by main contractor Wates Construction.



Based in Islington, North London since 1987, David Andrews Construction has gained experience in all types of plastering and related services, including specialist plasterwork for listed buildings and external insulated render systems, as well as acoustic ceilings and fire protection partitioning. Renderplas PVC beads ensure a reliable result, whatever the application, says the company's Project Manager, Ian Englishby. "We use them on a regular basis because they are so



## Case study: Renderplas on parade in major barracks revamp

Major barracks improvements for service personnel at Tidworth, Wiltshire, feature external walls newly rendered with military precision using PVC beading from Renderplas to ensure well-regimented joints, corners and edges.

Renderplas' beading offers the contractor significant time and cost savings. Concrete Repairs Ltd, specialists in external envelope renovation, selected Renderplas to supply the 6.5km of beading needed for rendering at Tidworth as part of Project Allenby / Connaught.

Aspire Defence, a joint venture between Carillion and KBR, is delivering Project Allenby / Connaught, the largest infrastructure PFI ever let by the Ministry of Defence. The quality of life for over 18,700 soldiers, 20% of the British Army, is improving thanks to the provision of modern, high-quality, fully serviced and purpose-built living and working accommodation across the garrisons of Aldershot and Salisbury Plain.

The Project is already significantly improving the lives of soldiers, at what is a crucial time for many, with more than 4,100 soldiers having already moved into their own single en-suite living accommodation. The new and refurbished buildings include Junior Ranks Single Living Accommodation (JRSLA) blocks, eight-man houses, dining facilities, mess halls, offices,

“Even small details like using wire mesh or a metal bead can ruin the performance in critical areas by introducing potential thermal bridges.”

stores and workshops, as well as sports and leisure facilities which incorporate high-performing materials in the external envelopes to improve overall efficiency.



Olu Ogunwale, Contracts Manager at Concrete Repairs, says the energy efficiency of an external wall depends on the materials and their use. “When selecting the optimum wall covering solution, we choose high quality materials and apply them exactly to specification. Even small details like using wire mesh or a metal bead can ruin the performance in critical areas by introducing potential thermal bridges.”

Mr Ogunwale says Concrete Repairs chose Renderplas as the only partner able to deliver exactly what was required. “We needed someone to supply a bead that would work equally well on refurbishment and new-build walls. We considered traditional stainless steel beading,

but we knew there would be performance issues and we were aware of its high cost, the difficulty of cutting it, and the potential for extra maintenance costs that occur if the aris is exposed.”

Renderplas was selected as it meets MoD requirements on sustainability and value for money. The beads were fixed directly to the substrate without mortar, to save time and money. Because Renderplas beads have a stronger aris than competitor products they hold their straightness, while the wings flex to take up irregularities in the blockwork.

Mr Ogunwale says: “Beware of lesser PVC beads – Renderplas beads are strong and easy to work with. They're simple to cut to size and it doesn't flex when render is trowelled on. We have also found that their design saves render, as depth-setting is more accurate.”

Renderplas developed their beads with performance in mind and no compromise in terms of style. The range comes in colours that match today's most popular renders. The PVC material is UV stabilised to maximise the life of the colour, so exposed joints and edges will complement the render for its whole lifetime, making it the natural choice for through-colour renders.

## Case Study: Perfect colour match for render beads and brand new rendered health centre

The vibrant façade of a new healthcare facility and offices in Cornwall posed no problem for Renderplas' PVC external render beads. Renderplas was able to provide a decorative and durable solution to match the through-coloured render of the £1.9m Wheal Northey Centre, built by Midas Construction on the site of a former tin mine in St Austell.

In addition to enhancing the building's fresh-looking façade, ivory coloured Renderplas PVC beading has ensured straight, durable joints, corners and edges on all external rendering. The PVC material we use makes a scratch resistant bead and will not discolour over time, so any exposed joints and edges will continue to complement the colour of the façade indefinitely.

External rendering applied on blockwork to a depth of 15mm was undertaken by Plymouth based Steve Turton Plastering Ltd, whose proprietor Steve Turton has no hesitation in recommending Renderplas beads for the project, having used PVC beads for much of his working life.

Steve Turton and his team used Renderplas Corner Beads on external corners and reveals to ensure a straight arris and to offer protection against impact. Stop Beads from the range have been used to prevent cracking around door and window surrounds, while Bellcast Beads above DPC level and window heads allow rainwater to drip clear of the underlying substrate.

He comments: "I find Renderplas PVC beads far superior to metal alternatives, which can introduce potential thermal bridges and are less durable. PVC is robust, non-corrosive and easy to cut to length. Also, using Renderplas beads that match the through-coloured render saves time and money on site as they don't need painting like metal beads."



"I find Renderplas PVC beads far superior to metal alternatives, which can introduce potential thermal bridges and are less durable."

Renderplas PVC beads need no alternative maintenance and eliminate the time and cost of re-painting, which would be required when using metal beads. In addition to standard white and ivory, Renderplas offers a wide choice of colours to meet the individual design requirements of all types of building. The 'standard' range comprises 9 colours to match the vast majority of render available from leading manufacturers.

"Renderplas beads come in a choice of colours to suit different project and planning requirements."

Both functional and aesthetic, through-coloured renders are widely used by architects to create bright, bold building facades. In addition to the aesthetic benefits, they are an increasingly popular solution as the façade never needs to be re-painted, so the delivered project is lower in maintenance and the building exterior can simply be washed using normal cleaning materials.

The 'standard' range comprises 9 colours including terracotta, willow, slate and sky, to match the vast majority of render available from leading manufacturers.

Terracotta

TE

Salmon

SA

Wheat

WH

Ivory

IV

White

Dove

DO

Slate

SL

Willow

WI

Sky

SK

## Technical

T 01299 888338  
E [technical@renderplas.co.uk](mailto:technical@renderplas.co.uk)

## Sales

T 01299 888330  
F 01299 888234  
E [order@renderplas.co.uk](mailto:order@renderplas.co.uk)

## Customer services

T 01299 888333  
E [admin@renderplas.co.uk](mailto:admin@renderplas.co.uk)

[www.renderplas.co.uk](http://www.renderplas.co.uk)