

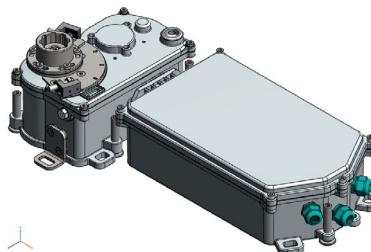
record C 127 X OFFSET underfloor swing door drive



records C127 X is the world's first underfloor operator for swing doors with exceeded IP 69 protection and enables unprecedented door designs for entrances in state-of-the-art buildings. The drive, which is concealed in the floor, allows all-glass doors to hover elegantly and silently over the ground. The drive system can be used for single or double leaf applications. The unique offset drive design offers a very close façade install and is therefore a huge benefit for installation flexibility. The integrated wind-damping feature slows down the door at wind loads – even during power failure and prevents damage while increasing pedestrian safety.

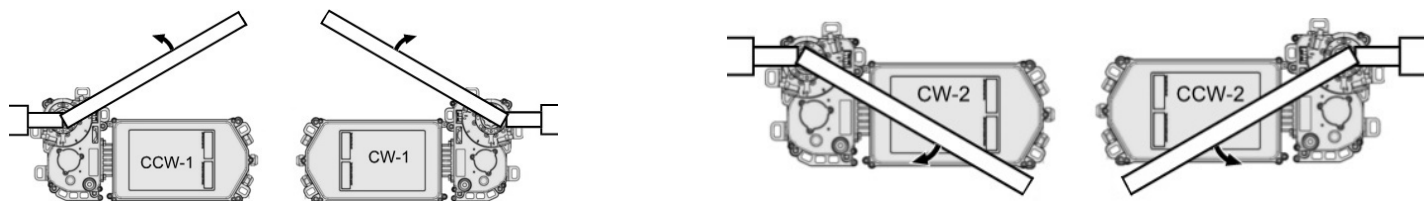
Main Features

Wind-damping feature
(also at power failure)
Various adjustment options from outside
up to 120° opening cycle adjustable
Separated die-cast housing
(mechanics/electronics)



Easy installation
(with included water level control)
1Mio. cycle tested
IP 69 rating
6X: protected against dust
X8: 24h dynamic test under water
X9: high-pressure water jet test

Product types



Options

Accessories

- Control panel BDE-D (required), BDE-D with i-record
- Sensors (optional) or activation via touchless solutions
- Hard end stopper (required)
- Design-rails, patch-fittings or titan glass inserts available



i-record Port



Technical data

Basic data		
Opening width	(A) ¹⁾ double leave single leave	1600 – 2500 mm 800 – 1250 mm
Passage height	(G) ¹⁾	Up to 3 000 mm
IP rating (with certificate)		IP 69 ²⁾
Door wing weight (max)		400 kg
Opening Angle		80° – 120°

¹⁾ Maximum values depend on glass type ²⁾ Additional 48 hours dynamic under water test

Operating modes & settings	
Low-energy, Full-auto, Manual operation	YES
Power-assist	YES, push to open
Door opening	Speed, acceleration
Door closing	Speed, acceleration & spring closing

Conformity to standards

EN 16005 Safety Standard, EN 60529 IP Rating, IEC 61000 EMC Electromagnetic Compatibility, IEC 60335-1 Functional Safety, UL 60950 (power supply), ANSI 156.19 and IBC.

Drive unit		
Type OFFSET		Motor opening, spring closing
Drive housing	(L x W x H)	503 x 254 x 150 mm
Min. hole size in floor ²⁾	(L x W x H)	ca. 600 x 300 x 170 mm
Rotating axis location		50 x 50 mm
Weight		19 kg

¹⁾ Maximum values depend on glass type ²⁾ drive without floor box or threshold cover

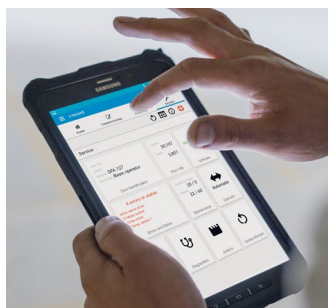
Electrical connection data	
Drive connection data	
Nominal voltage	100 – 240 V AC, 50 / 60 Hz
Rated power	67 W
Consumption in idle mode	Approx. 25 W
Basic data	
Temperature range	– 15 ° to + 50 ° C
Humidity range	up to 85 % rel. humidity, no condensation

Service

With our globally qualified service network we offer you the fastest possible support for door and gate systems.

The **i-record** app supports the technician during service and maintenance contributes to rapid troubleshooting with an exact diagnostics of the door system. Remote support can also be requested online, if required.

Our consultants will assist you in finding the right service package for your needs



Maintenance

Periodic maintenance is indispensable to ensure that your automatic door functions perfectly for many years and that the safety regulations are complied with at the same time. Benefit from the variable services of the record maintenance agreements.



[record AR App](#)



All CAD drawings and BIM models on our website