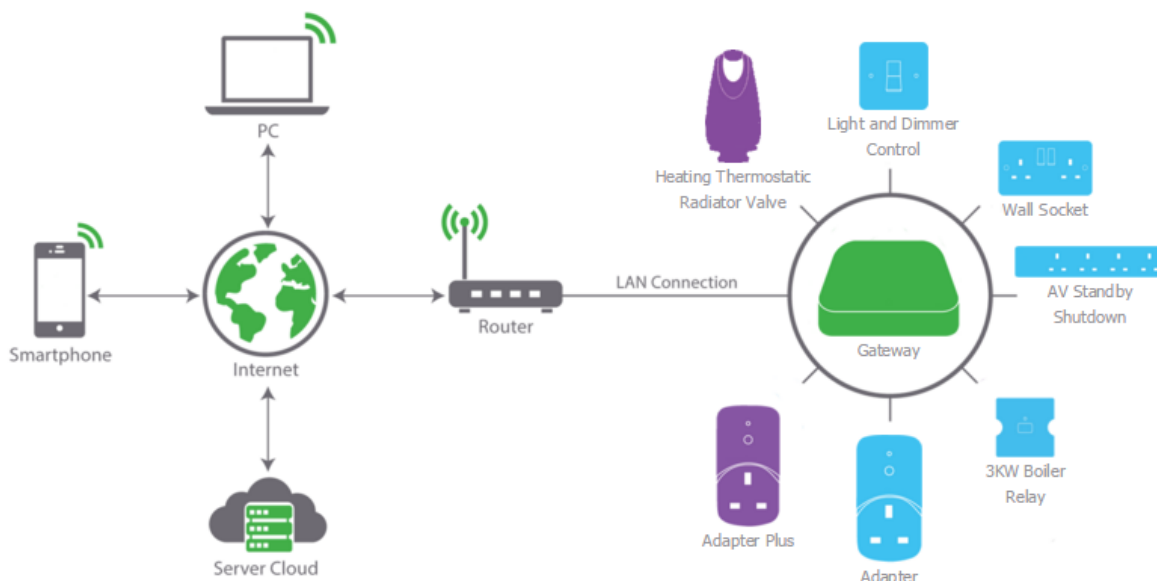


## Adapter Plus Product Instructions



### User Manual

#### Pairing the Adapter Plus

To use the adapter in your system it must be first “paired” with the Gateway.

Please ensure that your device is in range of the Gateway when you pair it. We suggest 10 metres or so as unobscured by furniture or walls etc. as possible.

You have two options to pair your adapter to the Gateway: either via a browser on a PC or smart device or via

the MiHome  smart device App.

You will need to have created an account and already installed the Gateway.

#### Using the Dashboard

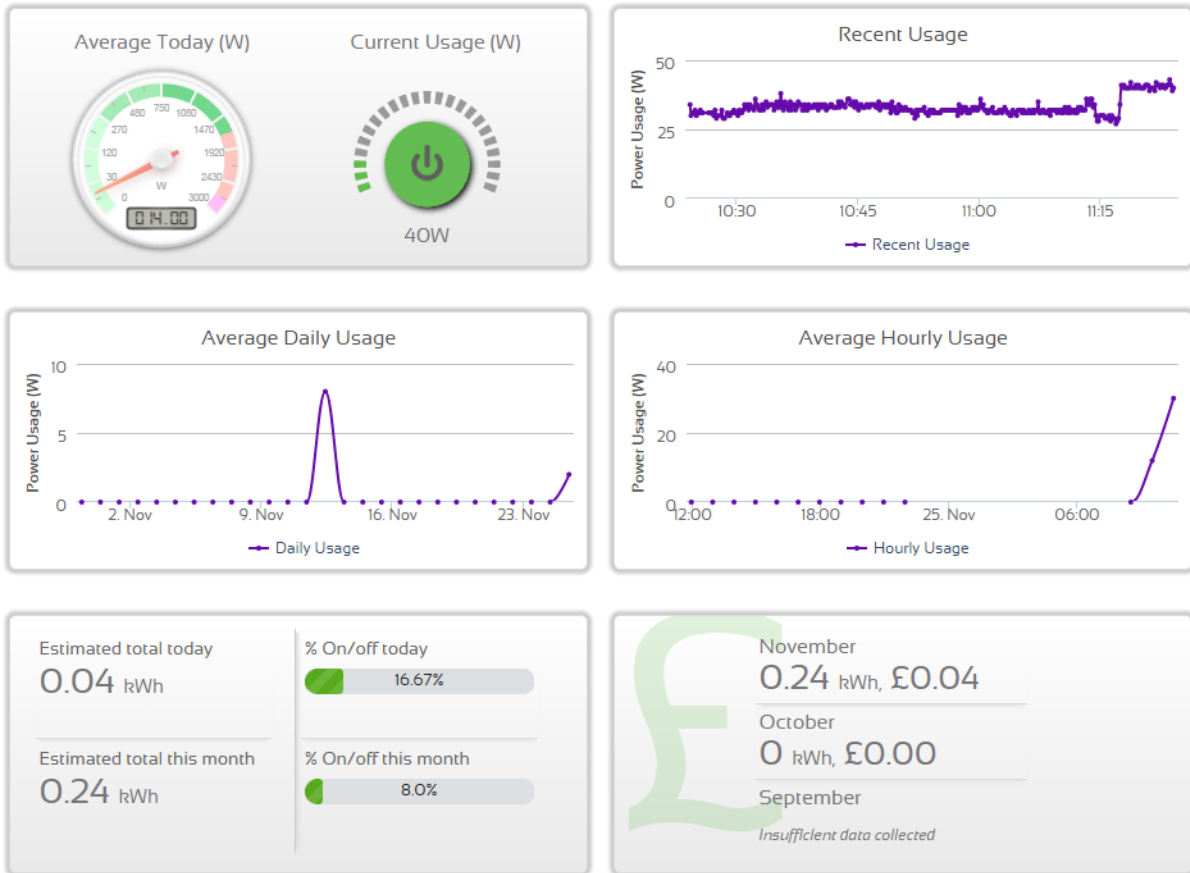
You can view and control your paired device by selecting the Dashboard option on your App or via the browser.

**Radmiser Example**  
Hardware ID: a0bb3e9003fa   Last Seen: less than a minute ago   Firmware Version: 1.1.3  
[Activity Log](#)   [Manage Gateway](#)   [Delete Gateway](#)   [Pair New Device](#)

Device Name	Power	SET	Target	Current	Actions
Living Room Radiator	3.33v	SET	22°	22°	Manuals, Manage, Unpair
Master Bedroom Radiator	3.19v	SET	22°	22°	Manuals, Manage, Unpair
Entertainment System	40W	SET	Monitor	Power	Manuals, Manage, Unpair

## Entertainment System

### Usage, Costs and Impact



## Technical Specification -

### Electrical

Maximum load: 3000W, 13A

Voltage range: 230-250V 50Hz ac

Plug and socket: BS5733 and BS1363

Insulation: Class II

### Radio

Transmission Frequency: 434.300 MHz

Tx duty cycle: <10%

Modulation: FSK, Manchester encoded

Transmission Interval: 10s

*Protocol: OpenThings*

## Environmental

*Operating temperature: 0°C to 40°C*

*Storage temperature: -40°C to 85°C*

*Location: Indoor use only*

## Mechanical

*Plug adapter housing in UK format*

## Troubleshooting

1. Please ensure that you do not plug adapters into adjacent sockets in a wall socket or extension lead. There should be several metres distance between individual adapters.
2. Any local source of radio noise may effect operation of the system. This may include poorly regulated fans or other devices running electric motors, noisy power supplies or other low quality electrical and electronic equipment including LED lights.
3. If your attempt to pair and adapter fails please try again. Occasionally the signals between devices may be subject to noise or other outside interference which is common for radio systems of this nature.
4. The range of communication between your Gateway and the device will be affected by anything in between that may obscure the signal such as furniture, walls, ceilings, windows, doors etc.

## Declaration of Conformity

Model: MIHO005 is in accordance with the following Directive(s):

2006/95/EC Low Voltage Directive (LVD)

2014/53/EC R&TTE Directive (Article 3.1b and 3.2)

2002/96/EC Waste Electrical and Electronic Equipment (WEEE) Directive

2011/65/EU Restriction of the Use of Certain Hazardous Substances (RoHS) Directive Recast

The unit complies with all essential requirements of the above referenced specifications and directives and has been issued a CE mark as per directive 93/98/EEC.

## Caution

**Important Note: The adapter can get warm to the touch during normal operation. This is normal and does not affect the operation or lifetime of the device.**

The adapter devices are 13amp approved, however it is not recommended to use your Control adapter with any appliance pulling a large current for an extended period, such as a heater or a device with a powerful motor such as a power tool or washing machine.

0800 978 8616  
enquiries@radmiser.co.uk

**Radmiser**<sup>TM</sup>

Please be aware that any changes or modifications not expressly approved in this manual could void your authority to operate this equipment.

