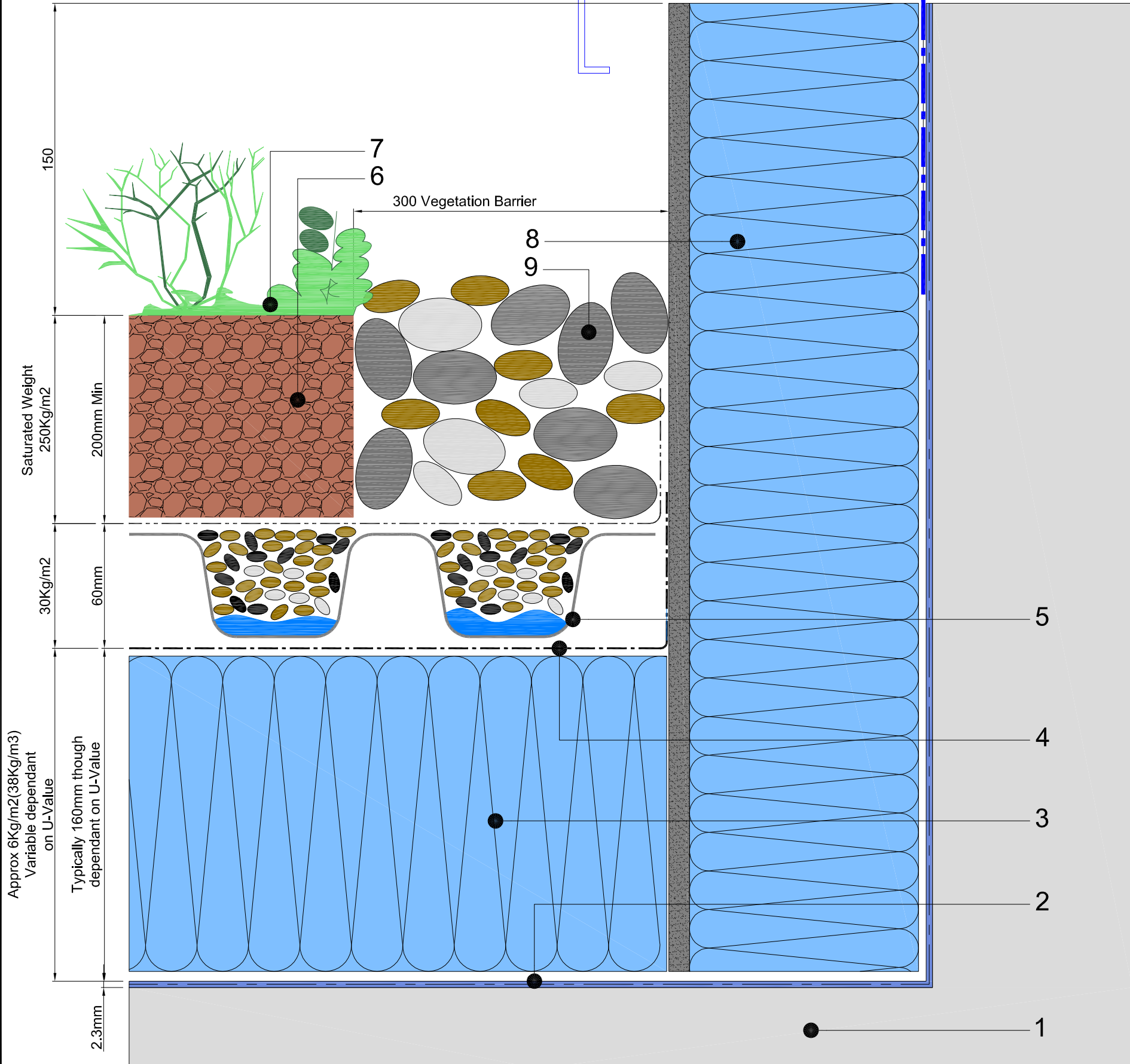


Membrane sealed by cladding contractor to Paraflex. Any membrane sealed direct to Paraflex must be checked for compatibility by the cladding contractor.



1. Concrete deck
2. Paraflex system
  - > Paraflex universal primer
  - > Hand cast kiln dried sand cast into primer
  - > Paraflex FD 1.5 mm initial coat
  - > Radmat 165Kg reinforcement layer
  - > Paraflex FD 0.8mm top coat
3. Extruded polystyrene insulation board.
4. Min-K thermal sheet
5. Radmat D60 water retention & drainage board  
G12 filter membrane
6. Radmat 100% recycled green roof growing media
7. Plant layer either plug & plant wild flowers/perennials or selected herbs
8. Extruded polystyrene cementitious faced insulation board
9. 300mm wide ballast margin

Note: Expected rainwater retention from 80 Litres/m<sup>2</sup>



TITLE **INVERTED ROOF PARAFLEX  
CONCRETE DECK INTENSIVE  
GARDEN UPSTAND DETAIL**

DATE: **Aug '09** SCALE **N.T.S.**

DRAWING NUMBER  
**RAD-PAR-603**