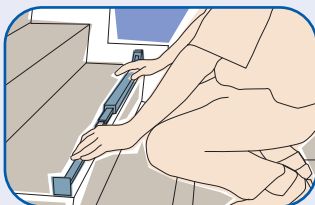


Fitting Instructions

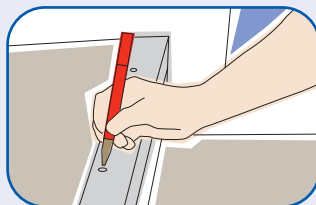
Drill & Plug Stair Nosings

1



When on site, check step measurements with cut stair nosing supplied. Trim if required. Prepare step edge surfaces. They must be clean, smooth, and clear of debris. For steps that are worn or have cracked surfaces repair mortar or similar should be used to repair the step.

2



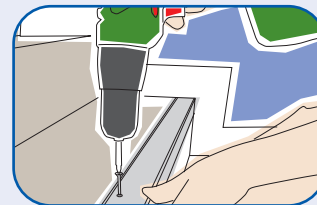
Mark the drill holes on the step, using a pre-drilled nosing as a guide or approximately 1 hole every 300mm. Then drill the holes using a masonry drill bit to suit the screw size.

3



Fit riser floor covering if applicable. Apply adhesive as per the manufacturers' instructions.

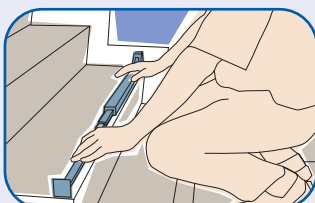
4



Starting at the top, place the nosing onto the step, press down and screw into position, then insert the infill plugs to cover the crew heads. Repeat the process for the next step down.

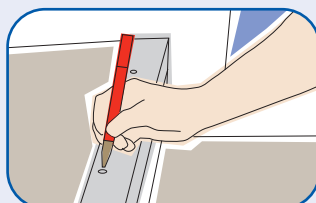
Secret Fixing Stair Nosings

1



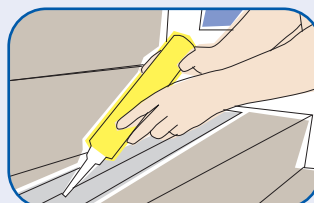
When on site, check step measurements with cut stair nosing supplied. Trim if required. Prepare step edge surfaces. They must be clean, smooth, and clear of debris.

2



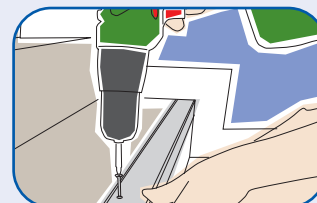
For stone or concrete steps mark screw locations on each tread (3 per step is recommended). Drill and plug screw holes.

3



Fit riser floor covering if applicable. Apply adhesive as per adhesive manufacturers' instructions.

4



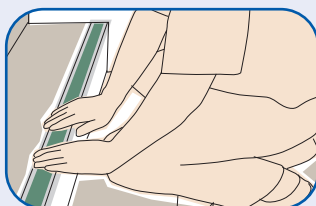
Place first nosing on top step, press down and screw into position. Repeat for second step and continue working downwards.

5



Trim infill lengths to respective stair nosing width. Working a step at a time from the top of the stairway downwards, peel off release paper from adhesive in channel(s).

6



Apply infill into channel - position each end first flush with ends and work the excess towards the centre. Press down firmly with hand roller along the full length of the infill to ensure the bond.

Technical Data

Material:	Aluminium Alloy / PVC / PVC-u
Applications:	Internal
Biological:	Will not support infestations or organic growth
Light:	Colours may fade in prolonged sunlight
Fire:	Self extinguishing - no support to combustion
Chemical:	Avoid strong acids or acetone
Thermal:	Avoid large ambient temperature variations
Electrical:	Aluminium is conductive

Cleaning

Aluminium carrier with PVC infill:

Clean aluminium carrier with a mild detergent solution then polish with a clean dry cloth. If required use a scouring pad to remove any ingrained dirt. Clean infill with a mild detergent solution using a scouring pad to remove any heavy soiling. Dry off if necessary with lint free cloth. Do not traffic whilst wet!

PVC-u:

Both infill and nosing should be cleaned with a mild detergent solution. Dry off if necessary with lint free cloth. Do not traffic whilst wet!