



*Flooring Contractor - Mick Shea Flooring End User - Bradley Hall Golf Club*

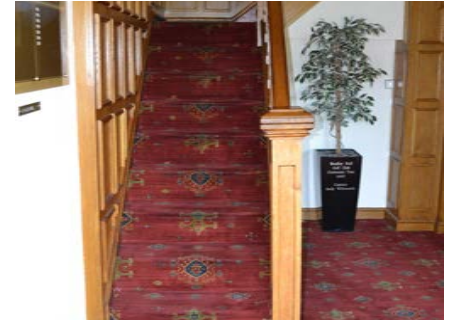
#### **CHALLENGE**

Prestigious Bradley Hall Golf is located over 60 acres of picturesque parkland in central Yorkshire. Golf was first played here in 1906 and considerable investment was spent converting the old house into an outstanding club house.

Recently the golf club had a major building upgrade but still retained the quality that had been set up all those years ago. As part of this refurbishment the central entrance of the golf club required an impressive eye catching finish to their mature style Victorian staircase with a unique large Bullnose curved bottom step.

**// We required a Stair Nosing that would suit the aesthetics of Bradley Hall Golf Club and would be safe and durable for heavy foot traffic. Quantum offered the best solution to suit the needs of our client. //**

Flooring Contractor



## SOLUTION

After visiting the golf club and discussing with the client the requested brass finishing proved too costly, however Specialist gold anodising still managed to provide a premium decorative finish for the golf club staircase, as well as making the staircase extremely durable and long lasting for heavy footfall.

Quantum Flooring and the flooring contractor worked closely with the customer to provide a perfect alternative in the form of the HB157 Heavy Duty Stair Nosing range. The HB157 Stair Nosing profile is an extremely stylish brass effect Stair Nosing with a slip resistant tread material that makes the steps safer and accommodates for heavy foot traffic conditions. HB157 has a higher gauge between 4-7mm enabling the

Floor Nosings to be well adapted to fit with various textured floor coverings, which protects the step edge and flooring material.

The Stair Nosing was installed using the specialist 'Secret Fixing' method. This was chosen to hide the screw heads and reduce the risk of dirt traps forming. This cost effective and aesthetically pleasing Stair Nosing solution was quick and easy to install in order to keep disruption levels to a minimum within the working environment of the golf club.

## PROJECT SPECIFICATION DETAILS

- >> **Stair Nosing:**  
HB157
- >> **Fixing:**  
Cut and hidden
- >> **Infill colour:**  
Peat
- >> **Flooring contractor:**  
Mick Shea Flooring
- >> **End user:**  
Bradley Hall Golf Club

