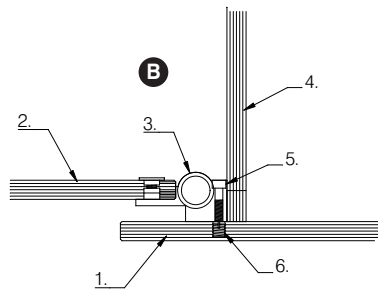


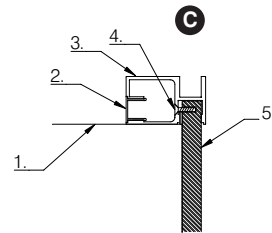
**A Connect Lock Detail**

- 1 - Compact Grade Laminate Fascia
- 2 - Aluminium Receiver
- 3 - Nylon Tip.
- 4 - Aluminium Finger.
- 5 - Aluminium Lock Body.
- 6 - Compact Grade Laminate Door.
- 7 - Aluminium Indicator Plate.



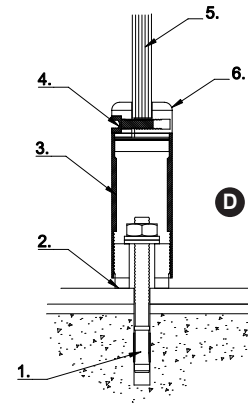
**B Connect Hinge Detail**

- 1 - Compact Grade Laminate Fascia.
- 2 - Compact Grade Laminate Door.
- 3 - Aluminium Hinge.
- 4 - Divider Panel.
- 5 - Cap Head Set Screw.
- 6 - Brass Insert.



**C Connect Head Rail Section Detail**

- 1 - Divider Panel.
- 2 - Aluminium Clip-In Profile.
- 3 - Connect Aluminium Head Section.
- 4 - Mar 40 No 8 x 1/2" Posi Count Sunk.
- 5 - M



**D Connect Foot Section Detail**

- 1 - Plastic Plug.
- 2 - Inner (2 Part Assembly).
- 3 - Nylon Insert.
- 4 - Adjustable Bolt.
- 5 - Aluminium Inner Profile.
- 6 - Shroud.
- 7 - Screw.



Door Lock



Door Hinge



Head Rail



Foot

**CONNECT**  
Technical

