



# 4000 series

**A performance range of access panels for jointless plasterboard/plaster and masonry walls**

-  **1 HOUR FIRE RATED (1FR)**
  -  **2 HOUR FIRE RATED (2FR)**
  -  **4 HOUR FIRE RATED (4FR)**
  -  **2 HOUR UL (USA) RATED (UFR)**
- ACOUSTIC SHIELDED Rw**

## KEY FEATURES

**1 HOUR FIRE RATED (1FR)**



integral fixing angles for easier fixing  
door edges protect insulation



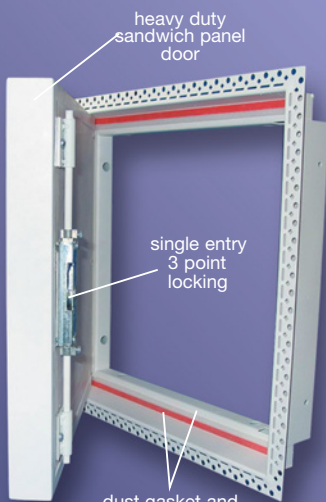
slim sandwich panel door  
dust gasket all round  
frame choice

## KEY FEATURES

**2 HOUR FIRE RATED (2FR)**



choice of frame to suit finishing requirements  
strong welded box section frame



heavy duty sandwich panel door  
single entry 3 point locking  
dust gasket and intumescent seals all around

## INTRODUCTION

The PROFAB 4000 series range of steel lockable access panels is available in a variety of designs that can provide up to 4 hours fire resistance into jointless plaster/plasterboard and masonry walls and partitions. Used widely in service shafts, corridors and protected zones where access to mechanical and electrical services is required without compromising aesthetics and fire safety. Access is often a multi-door requirement and can be up to 2800mm in height.

The product is available with a variety of lock options, finishes and door configurations including single, double and multi door options.

One hour Fire rated (1FR) and two hour fire rated (2FR) designs are also available acoustically shielded to provide up to 35dB RW rating.

## DESCRIPTION

### COMPOSITION & MANUFACTURE

A precision welded, strong metal frame holds a flush metal door through a concealed pivot hinge (or a series of fully adjustable concealed hinges for the 170 degree opening product). Actual construction varies dependant upon size and fire performance requirements. The door is held closed with a choice of locking systems and opens outwards towards the user. Doors are removable if damage occurs or during installation. Panels with simulated drywall beaded frames (BF) or deep plaster (DPF) are jointed/plastered over on site and finished to match the colour/texture of the adjacent surface. Retrofitted panels have a picture frame surround (PF) and are factory finished in powder coat semi-gloss white paint. A constant 3mm gap is maintained between the door and frame by the dome location system.



Single Door (SD)



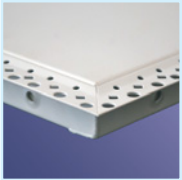
Double Door (DD)



Multi Door Continuous Access (CA)

**FRAME OPTIONS**

**LOCK OPTIONS**



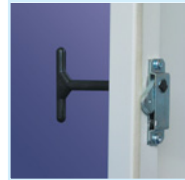
**Beaded Frame (BF)**



**Picture Frame (PF)**



**Deep Plaster Frame (DPF)**



**Budget Lock (BL)**



**Security Lock (SL)**



**Three Point Lock (3PL)**



**Three Point (HS)**



**4000/2FR/BF/3HS**



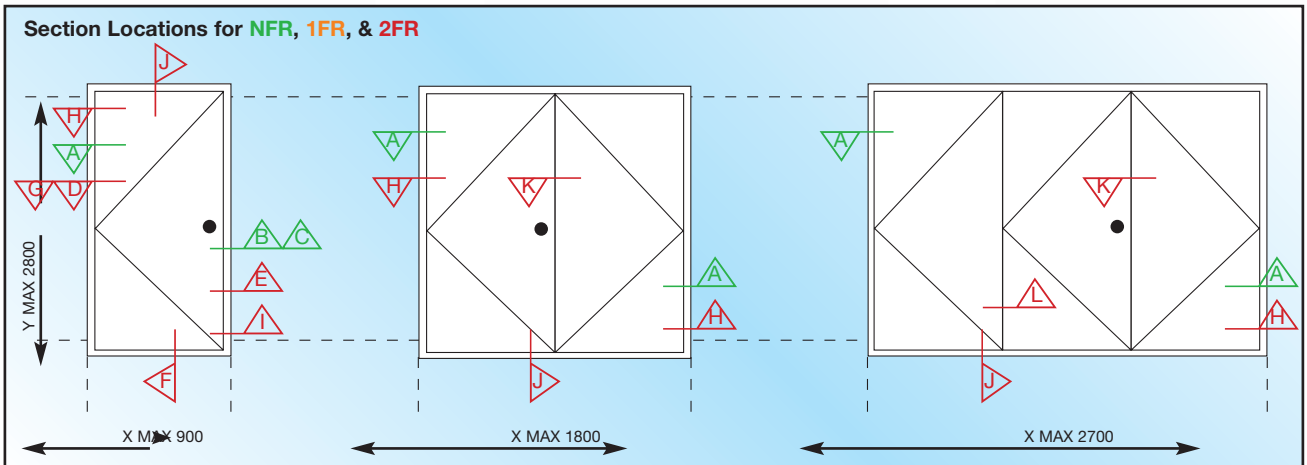
**4000/2FR/BF/3HS**



**4000/2FR/BF/3HS**



**4000/2FR/BF/3HS/DD**



# 4000/1FR

## 1 Hour Fire Rated

### 4000/1FR (1 Hour Fire Rated)

Fig.7  
scale 1:2  
section on 

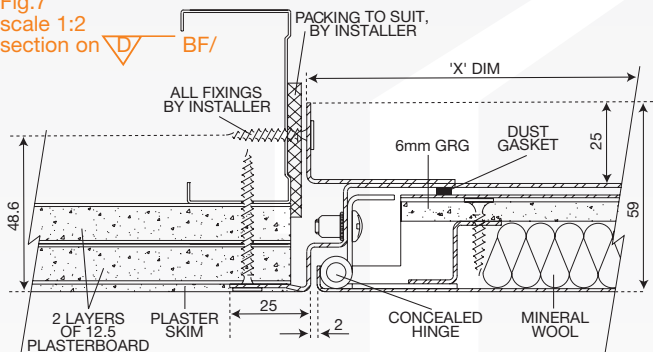


Fig.8  
scale 1:2  
section on 

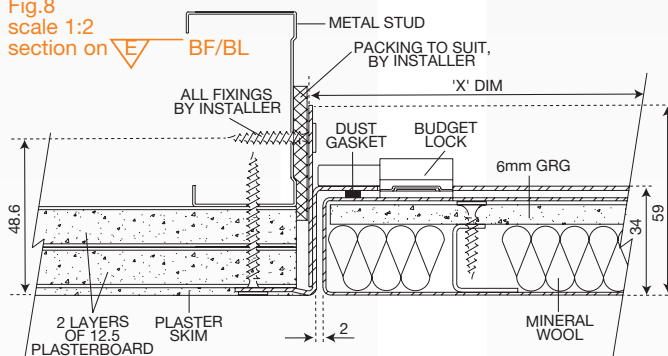


Fig.9  
scale 1:2  
section on 

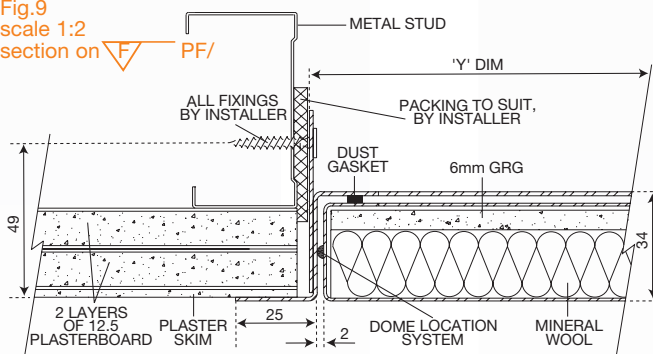
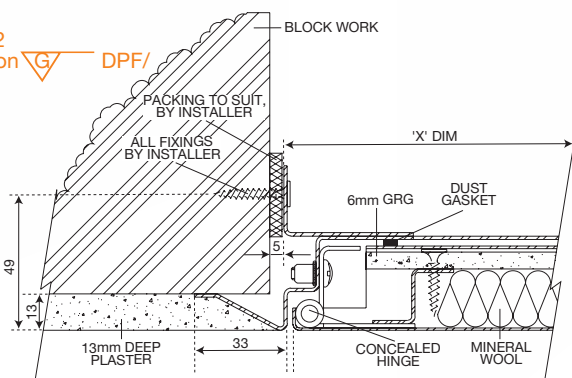


Fig.10  
scale 1:2  
section on 



**Frame:** 1.2mm thick electro-galvanised mild steel, incorporating either a simulated dry wall edge bead profile (BF), picture frame (PF) or deep plaster frame specified size, fitted with dust seals and finished white powder coated primer or semi-gloss white.

**Door:** 0.9mm thick, electro-galvanised mild steel flush faced tray lined with mineral wool and glass reinforced gypsum board with a white powder coated finish.

**Locks:** Select from budget lock (BL), security lock (SL), both concealed on the rear of the door but operated from the front face with an included 8mm square drive or security key. A white round removable cap on the door face conceals the key hole or is an integral chrome escutcheon for the SL option.

#### TYPICAL SIZES & WEIGHTS

DimX	DimY	Std Lock Options	Kgs
200	200	BL SL	3.5
300	300	BL SL	4
450	450	BL SL	7
550	550	BL SL	8
600	600	BL SL	13
550	900	BL SL	20
550	1200	BL SL	26

All dimensions in millimetres.

All doors hinge along dimension Y

When Y dimension exceeds 700mm two locks are fitted (applies to BL and SL). All panels above are single door. For larger panels use 4000/1FR/3PL. For multi-door configurations use the 4000/2FRpanel. If in doubt contact Profab Technical Services.

#### KEY INSTALLATION/POINTS TO NOTE

- 1.X and Y dimensions are outside rear frame.
- 2.Overall frame depth is 59mm (Dim at fixing angles). Panel sandwich is 34mm (see fig 8).
- 3.Structural opening required for installation is (X+5) x (Y+5)mm.

#### FIRE PERFORMANCE

The 4000/1FR series panel has been designed so as not to impair the fire resistant performance of a fire rated wall if installed in it. It will match the tested or assessed construction. All 4000/1FR structural components and fixing methods are non-combustible. Small plastic components will melt, but are not structural.

#### Fire Test Data

A 1 hour fire resistance test to BS476 Part 22 was carried out on a 900x900mm 1FR access panel that maintained the integrity criteria for 72 minutes. Test No IF03029 dated 12 June 2003.

Testing and assessments are ongoing. Please contact Profab Technical Services for the latest verification data.

#### APPLICATIONS & USES

All standard panels are for internal use and only in areas of normal humidity. 4000/1FR/BF or DPF is suitable for vertical use where the panel is being installed prior to any tape and jointing/skim-coat or plastering. 4000/1FR/PF is suitable for vertical use where the panel is being installed after finishing work has been completed. The panel is factory finished semi-gloss white so needs no further decoration.

#### Acoustic Rating

This product is available with additional acoustic shielding up to 35dB RW. Please contact Profab Technical Services for full details.

#### SPECIFICATIONS

##### EXAMPLE:

Access panel type 4000/1FR/BF/BL. Size 550mm x 900mm single door unit supplied by Profab Access Limited.

# 4000

## 4000/2FR 2 Hour Fire Rated

### 4000/2FR (2 Hour Fire Rated)

Fig.11 scale 1:2 section on BF

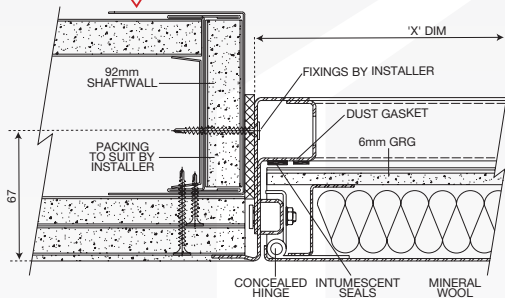


Fig.12 scale 1:2 section on BF/3P

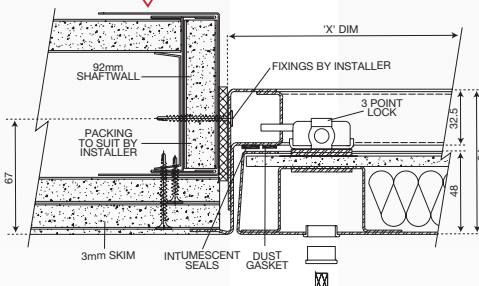


Fig.13 scale 1:2 section on PF/3P

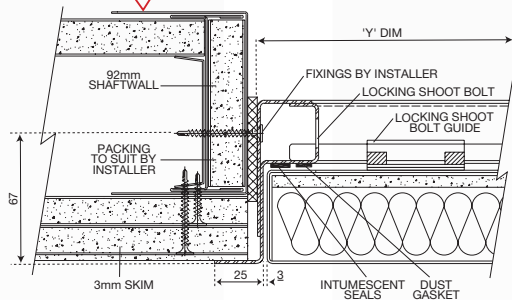


Fig.14 scale 1:2 section on /3P

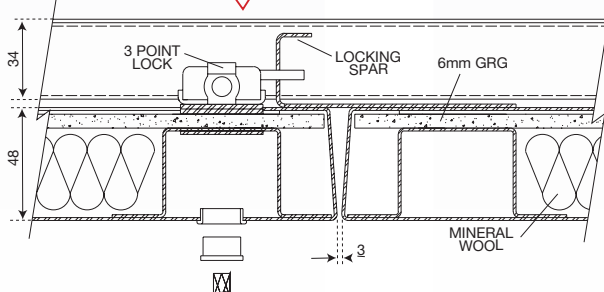
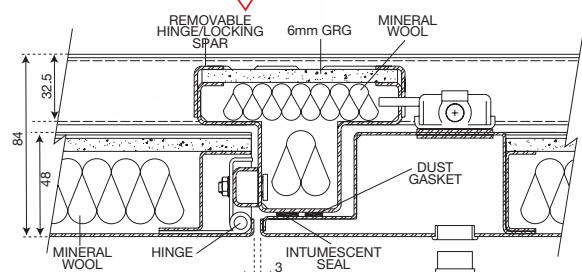


Fig.15 scale 1:2 section on /3P



**Frame:** 1.6mm thick electro-galvanised mild steel, incorporating either a simulated dry wall edge bead profile (BF), picture frame (PF) or deep plaster frame (DPF). Factory welded box section to specified size, fitted with dust and intumescent seals and finished white powder coated primer or semi-gloss white.

**Door:** 0.9mm thick, electro-galvanised mild steel flush faced tray lined with mineral wool and glass reinforced gypsum board with a white powder coated finish.

**Locks:** Three-point lock (3PL) on the rear of the door but operated from the front face with an included 8mm square drive key. A white round removable cap on the door face conceals the key hole. Locks can be upgraded to include preparation for an additional Europrofile high security cylinder (3HS) if y dimension is 450mm or greater.

#### TYPICAL SIZES & WEIGHTS

DimX	DimY	Std Lock Options	Kgs
450	450	3PL	9
600	600	3PL 3HS	15
550	900	3PL 3HS	23
550	1200	3PL 3HS	30
600	1500	3PL 3HS	40
900*Max	2800*Max	3PL 3HS	107

#### DOUBLE DOOR UNIT

1080	1800	3PL 3HS
1200	2100	3PL 3HS
1800	2100	3PL

All dimensions in millimetres.

All doors hinge along dimension Y

When Y dimension exceeds 700mm two locks are fitted (applies to BL and SL).

All panels above are single door. For larger panels use 4000/2FR/3PL. For multi-door configurations use the 4000/2FR panel. If in doubt contact Profab Technical Services.

#### KEY INSTALLATION/POINTS TO NOTE

1. X and Y dimensions are outside rear frame.
2. Overall frame depth is 59mm (Dim at fixing angles). Panel sandwich is 34mm (see fig 8).
3. Structural opening required for installation is (X+5) x (Y+5)mm.

#### FIRE PERFORMANCE

The 4000/2FR series panel has been designed so as not to impair the fire resistant performance of a fire rated wall if installed in it. It will match the tested or assessed construction. All 4000/2FR structural components and fixing methods are non-combustible. Small plastic components will melt, but are not structural.

#### Fire Test Data

A 2 hour resistance test to BS EN 1634-1:2008 was carried out on a 2000x2400mm 2FR access panel that maintained the integrity criteria for 120 minutes.

Testing and assessments are ongoing. Please contact Profab Technical Services for the latest verification data.

#### APPLICATIONS & USES

All standard panels are for internal use and only in areas of normal humidity. 4000/2FR/BF or DPF is suitable for vertical use where the panel is being installed prior to any tape and jointing/skim-coat or plastering. 4000/2FR/PF is suitable for vertical use where the panel is being installed after finishing work has completed. The panel is factory finished semi-gloss white so needs no further decoration.



# 4000 series

## RISER, DUCT & POD ACCESS DOORS

### Typical Application

Profab 4000 series products are suitable for riser, duct and pod access applications requiring performance access panels for jointless plasterboard/plaster and masonry walls where maximum performance is required from the access panel.

Designed for ease of installation with flush metal doors for clean uncluttered appearance, the 4000 panel is a good alternative to conventional timber door/architrave access. It is an ideal choice for hotel, office, student, affordable housing, key worker, hospital and other building projects.

The panel can be manufactured in any size in single (SD), double (DD) or multi-door banks (CA).

### Fire Tested to BS EN 1634-1:2000

4000/1FR/3PL and 4000/2FR/3PL panels have been tested and retained structural integrity achieving 4 hours fire rating in single door (900mm x 2400mm) and 2 hours fire rating in double door (1800mm x 2400mm) configuration. ).

### Lock Mechanism

The panel uses a lockable three point catch mechanism (3PL) which can be upgraded to incorporate a Euro Profile High Security cylinder key lock (3HS).

### Frame Options

The panel is available in standard beaded frame (BL) for installation into unfinished walls, or 25mm visible picture frame (PF) for retrofit into finished walls. A number of other frame options are available on request including deep plaster frame (DPF), alternative picture frame widths, Dutch fold frames (for positioning directly onto a concrete floor and/or into a corner), simulated architrave and bespoke frames. Details on request from Profab Technical.

### Paint Finish, Ironmongery and Signage

The panel is supplied in standard beaded frame (BF) finished all over in etch white polyester powder coat primer (EWP) or in standard picture frame (PF) in RAL 9010 Matt. A wide variety of other paint colours, gloss levels and textures are available on request. Lock escutcheon plates, pull or turn handles and signage etc can be fitted on request.



4000/1FR/SD/3HS



4000/2FR/DD/3HS



4000/2FR/CA/3PL



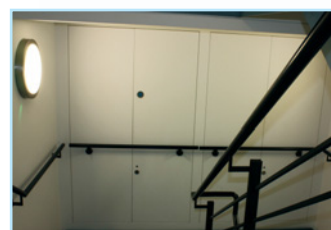
3HS LOCK TYPE



WITH D RING HANDLE



SIGNAGE



BESPOKE 4000/2FR3HS  
MODIFIED TO ACCEPT  
REMOVABLE HANDRAIL



# 4000 series

## Acoustic

### Typical Application

As per 40001FR/3PL and 2FR/3PL. The panel includes acoustic gaskets and rubber laminated steel back plates to the doors. For optimum performance the panels can be further upgraded to seal all of the air paths through the frame and door and/or by the inclusion of additional secondary acoustic insulation and/or acoustic gasket. In this way the panel can be tailored to a specific acoustic Rw performance in accordance with the surrounding structure. CONTACT PROFAB TECHNICAL FOR FURTHER DETAILS.

### Fire Tested to BS EN 1634-1:2000

As per 4000/1FR/3PL and 4000/2FR/3PL.

### Lock Mechanism

As per 4000/1FR/3PL and 4000/2FR/3PL.

### Frame Options

As per 4000/1FR/3PL and 4000/2FR/3PL.

### Paint Finish, Ironmongery and Signage

As per 4000/1FR/3PL and 4000/2FR/3PL.

## 4000/UFR FIRE RATED TO UL 10B (USA AND CANADA)

### Typical Application

As per 4000/2FR/3PL, the 4000/UFR is approved to UL10B for up to 2 hours fire resistance in single door (SD) and double door (DD) configuration and carries the UL label.

Contact Profab Sales or Technical for details.

### Lock Mechanism

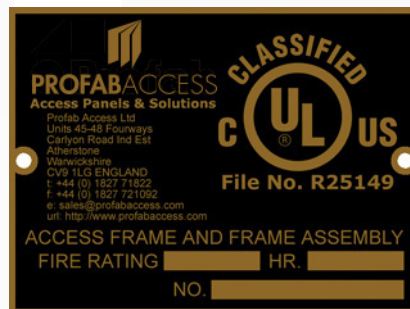
As per 4000/2FR/3PL.

### Frame Options

As per 4000/2FR/3PL.

### Paint Finish, Ironmongery and Signage

As per 4000/1FR/3PL and 4000/2FR/3PL.



For further information visit [www.ul.com](http://www.ul.com)

File Number R25149



Our products are now available to download as objects...



NBS National BIM Library

Distributor:

Profab Access Ltd.  
Unit C-D  
Riversdale House  
Riversdale Road  
Atherstone  
Warwickshire  
UK  
CV9 1FA

TEL: +44 (0) 1827 718 222  
FAX: +44 (0) 1827 818 680  
sales@profabaccess.com  
www.profabaccess.com

