

PPG TRAFFIC SOLUTIONS

Surfacing solutions for line and area marking in EV Bays



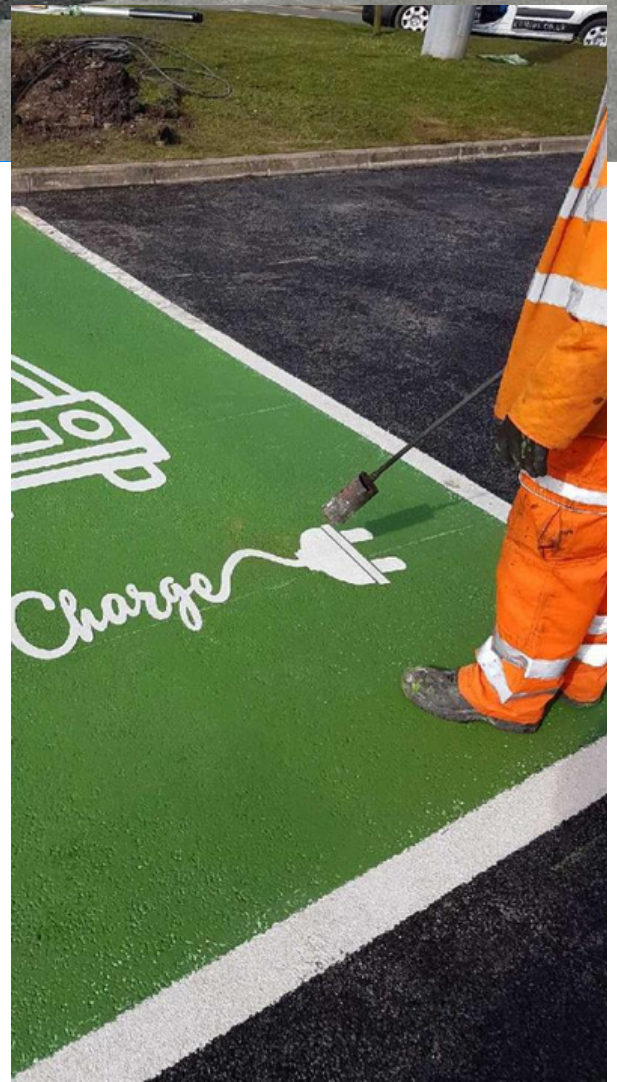
Electric Vehicles are the future

Superior, durable materials contributing to creating a more sustainable transportation ecosystem.

As the world races towards a greener future, Electric Vehicles (EVs) have emerged as the first choice for sustainable transportation, and we recognise the importance for businesses and organisations to adapt to this shift. That's why we have dedicated ourselves to developing a comprehensive range of marking solutions designed for 'EV Charging Bays'.

Across our product range, you can choose from our varied product offering that is tailored to your needs and requirements for each project. All products are suitable for application on any surface with appropriate primer.

Furthermore, we offer the option to customise the markings to include your company logo, symbol, or any other element that aligns with your organisation's goals.





Line Marking

Our advanced line marking solutions offer high-visibility delineation for EV charging bays to ensure seamless navigation for drivers.

FS01 SBP

Description

An acrylic, aromatic-free, solvent-based paint, suitable for hand and machine application at minimum 5°C. FS01 SBP is a cost-effective, quick drying paint which can achieve increased retroreflectivity with drop-on glass beads. FS01 SBP is suitable for both line and area marking.

Key Benefits

- Cost-effective solution
- Highly durable which can be enhanced with addition of antiskid material
- Fast drying time
- High adhesion/bonding to the surface
- Aromatic free

FS01 SBP PREMIUM

Description

An acrylic, aromatic-free, solvent-based paint, suitable for application using brush, roller, conventional, or airless marking machines between temperatures 5°C - 45°C. FS01 SBP Premium can achieve higher levels of retroreflectivity with addition of drop-on glass beads.

Key Benefits

- Highly durable which can be enhanced with addition of antiskid material
- Fast drying time
- Aromatic free
- High adhesion/bonding to the surface
- Engineered to enable extended use throughout cold seasons

WB SERIES

Description

An acrylic waterborne paint, suitable for application using conventional marking machines, or handgun, brush and roller for small areas, at minimum temperature 10°C. Our WB Series contains anti-skid aggregates for enhance skid resistance.

Key Benefits

- Highly durable which can be enhanced with addition of antiskid material
- Fast drying time
- Aromatic free
- High adhesion/bonding to the surface
- Engineered to enable extended use throughout cold seasons

THERMALINE®

Description

A preformed thermoplastic product applied using a gas torch, suitable for all climates. Thermaline® is available with or without glass beads for enhanced night visibility. Thermaline® is suitable for both line and area marking.

Key Benefits

- High durability with a long service life
- Excellent skid resistance
- Suitable for application in all climates and weather conditions
- No curing time needed
- High adhesion/bonding to the surface

PRISMO EPOXYLINE™

Description

A pure epoxy-ester solvent borne paint, suitable for hand and machine application at minimum temperature 5°C. Prismo Epoxyline™ is provided in a single pack for quick and easy application. Prismo Epoxyline™ is suitable for both line and area marking.

Key Benefits

- Excellent durability and resistance to wear
- Anti-skid properties which can be enhanced by drop on or incorporation of material
- Fast curing time
- One-pack product for hassle-free application
- Suitable for application in varied climates.

Area Marking

Enhance the visual appeal of your EV charging bays by incorporating vibrant colors from our election of area marking products, which can be customised to meet your desired RAL colour.

FS01 SBP

Description

An acrylic, aromatic-free, solvent-based paint, suitable for hand and machine application at minimum 5°C. FS01 SBP is a cost-effective, quick drying paint which can achieve increased retroreflectivity with drop-on glass beads. FS01 SBP is suitable for both line and area marking.

Key Benefits

- Cost-effective solution
- Highly durable which can be enhanced with addition of antiskid material
- Fast drying time
- High adhesion/bonding to the surface
- Aromatic free

ROBUR® GRIP

Description

A two-component, solvent-free Methyl Methacrylate (MMA) product, suitable for hand application between temperatures 7°C - 40°C. Robur® Grip offers the possibility to blend in aggregates to boost surface texture and skid resistance.

Key Benefits

- Highly durable and resistant to wear in all weather conditions
- Anti-skid properties
- Fast curing time
- Skid resistance can be enhanced with aggregates
- UV stable

PRISMO HELIX™

Description

An acrylic waterborne paint, suitable for hand and machine application between temperatures 10°C - 45°C. Prismo Helix™ is a cost-effective product that offers the possibility to blend in aggregates to enhance skid resistance.

Key Benefits

- Cost-effective product
- Possibility to enhance skid resistance with addition of premix aggregates
- Fast curing time
- Minimised odour due to absence of solvents

THERMALINE®

Description

A preformed thermoplastic product applied using a gas torch, suitable for all climates. Thermaline® is available with or without glass beads for enhanced night visibility. Thermaline® is suitable for both line and area marking.

Key Benefits

- High durability with a long service life
- Excellent skid resistance
- Suitable for application in all climates and weather conditions
- No curing time needed
- High adhesion/bonding to the surface

PRISMO EPOXYLINE™

Description

A pure epoxy-ester solvent borne paint, suitable for hand and machine application at minimum temperature +5°C. Prismo Epoxyline™ is provided in a single pack for quick and easy application. Prismo Epoxyline™ is suitable for both line and area marking.

Key Benefits

- Excellent durability and resistance to wear
- Anti-skid properties which can be enhanced by drop on or incorporation of material
- Fast curing time
- One-pack product for hassle-free application
- Suitable for application in varied climates.



Thermaline®
Car Park
Symbols



This document contains general information only and should not be construed as creating any warranties, express or implied. Please contact a PPG representative for additional information.

The PPG Logo is a registered trademark of PPG Industries Ohio, Inc.

Thermaline and Robur are registered trademarks of the PPG Group of Companies. Prismo Epoxyline are Prismo Helix are trademarks of the PPG Group of companies.