

# PREMIER LOFT LADDERS

2 Dawson Drive, Trimley St Mary  
Felixstowe, Suffolk IP11 0YW

Tel: 0845 9000 195 Fax: 01394 214413  
email: [sales@premierloftladders.co.uk](mailto:sales@premierloftladders.co.uk)  
[www.premierloftladders.co.uk](http://www.premierloftladders.co.uk)

## PREMIER LOFT LADDERS

### Premier Loft Ladders Ltd

Registered office:  
2 Dawson Drive,  
Trimley St Mary,  
Felixstowe,  
Suffolk. IP11 0YW  
0845 9000 195 telephone  
01394 214413 fax  
[sales@premierloftladders.co.uk](mailto:sales@premierloftladders.co.uk)

Visit us on the web at  
[www.premierloftladders.co.uk](http://www.premierloftladders.co.uk)

Because of developments in technology, these data or procedures may be subject to change.  
Consequently, we advise users to review their continuing validity annually.

Aug 2006 Produced in England by IBIS Documentation Services. [www.ibisdoc.com](http://www.ibisdoc.com)

## Installation Instructions: The Piccolo



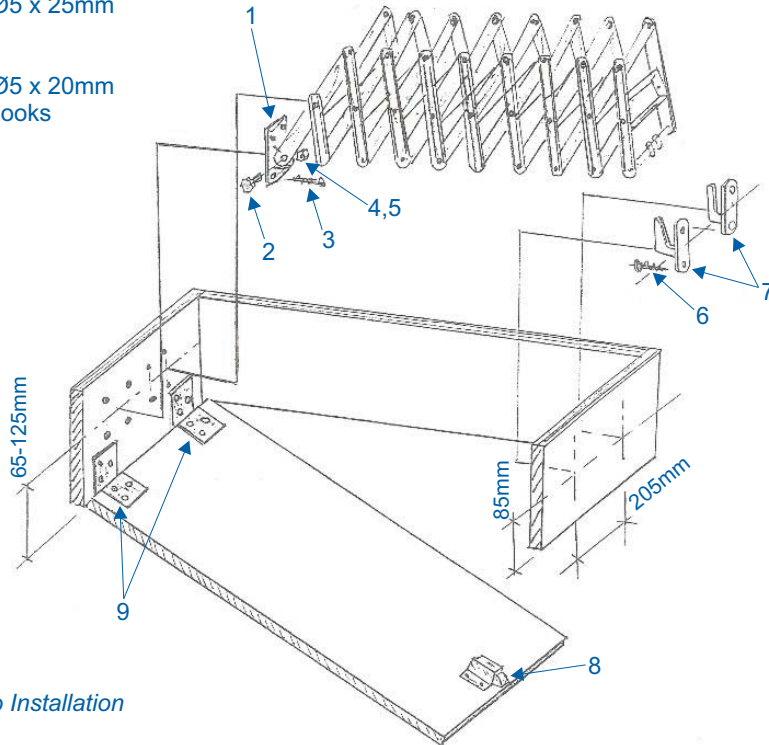
Premier Loft Ladders Ltd Registered Office: 2 Dawson Drive, Trimley St Mary, Felixstowe, Suffolk. IP11 0YW  
Registered in England No. 4941576  
All business is subject to Premier Loft Ladders Ltd. Terms & Conditions

**The Piccolo**

The Piccolo S stairway is supplied with counterbalance springs which hold the stairway in the folded position without additional support. The Piccolo stairway without the counterbalance springs, is supplied with a pair of hooks which are to be positioned at the opposite end of the opening to the hinge. This will allow the stairway to be stored when not in use. Both models require a clear aperture width of 380mm inside the hatch.

The Piccolo S is supplied mounted on a wooden backboard, the fixing brackets on the backboard have a number of pre-drilled holes to aid fixing. The backboard should be secured using at least 6 screws (3) 6x80mm, suitable plugs and washers 6.4mm DIN 125. The backboard must be fixed to a suitable secure structure or hatch box.

1. Bearing support brackets
2. Hexagonal bolt M8
3. Pan head screw Ø5 x 25mm
4. Self locking nut
5. Washer M10
6. Pan head screw Ø5 x 20mm
7. Plastic retaining hooks
8. Catch
9. Offset hinges

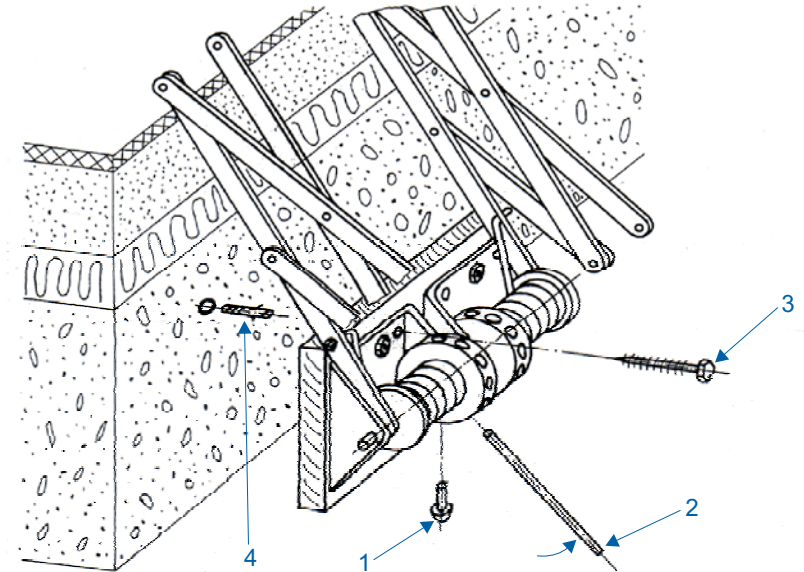


Piccolo Installation

**Adjustment of the springs - Piccolo S:**

**(Caution: Only undertake this instruction with the steps closed and only if the steps are required to lower under their own weight).**

1. Insert the metal rod 8 x 30mm (2) into one of the holes on the spring fixing bracket. Preferably the hole next to the rivet (1).
2. Using the metal rod, rotate the spring fixing until another hole is exposed. Relocate the rivet in this newly exposed hole.
3. Allow the spring fixing to gently return, until the rivet touches the bracket and prevents further movement.
4. **Caution: Do not remove the metal rod until the rivet is resting on the bracket.**  
**Caution: The spring is under high tension, do not over wind.**



Piccolo S Installation

**Maintenance:**

- At regular intervals, check all screws, nuts, and locking parts for proper seating.
- Regularly oil/grease all moving parts.

**Safety instructions:**

- When opening the installed steps, do not push the swivelling arm up to the stop. There is a risk that the large lever of the extended scissor steps will tear the front board from the screwed mounting, or that parts of the step assembly will be damaged.