



PORTMAN

*Pocket door systems
Sliding door gear*

Space making doorsets

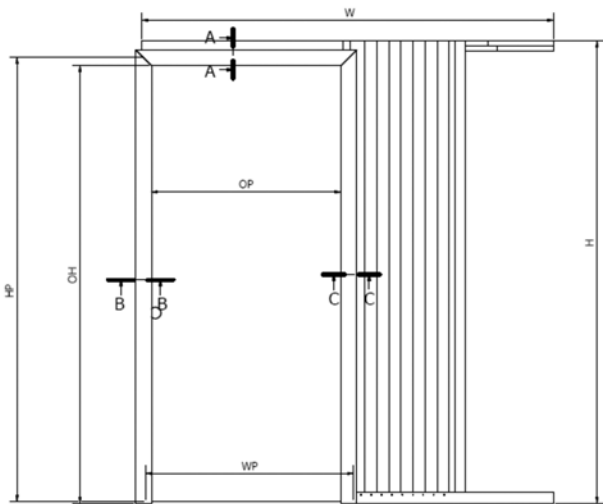
KITS for FD30/E30 applications

Portman is unique in its ability to provide a system that is certified for use with FD30 door leaves. The Portman FD30 system allows for approved* single and double door leaves to be installed. This unique fire rated assemblies open up new opportunities to create innovative designs and room layouts.

Standard design – Gypsum framed

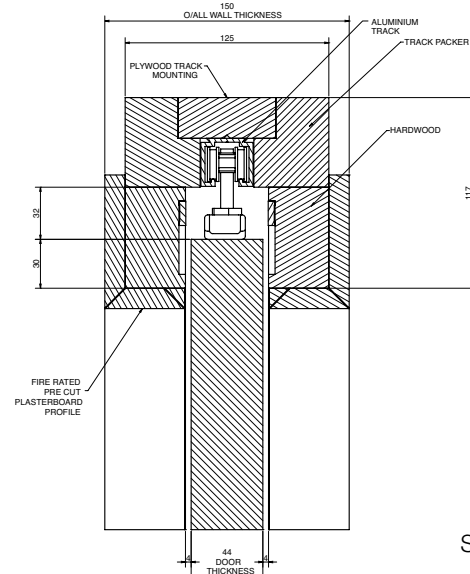
Bespoke profiled timber door sub-linings come complete with intumescent fire seals and pre-cut and formed plasterboard sections which wrap around the sub-frame and create the door lining, all providing exceptional fire integrity. The standard plasterboard lining may be sub-lined with timber and architraved in the usual way for aesthetic purposes.

Doors for use within FD30 Portman kits must incorporate a specific door leaf construction types to comply with the scope of certification, please see page over for guidance. Single fire doors being installed with a self closer must use one of the “F” suffixed closer options (see page 19) for parts.

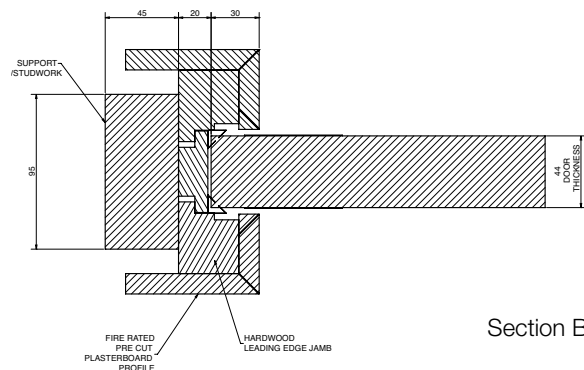


Dimensions (max door thickness 44mm)	
Single Door	
Wp = Door panel width	Sp = Wp-9mm
Hp = Door panel height	Op = Wp-95mm
W = (2Wp)-20mm	Oh = Hp-35mm
H = Hp+95mm	

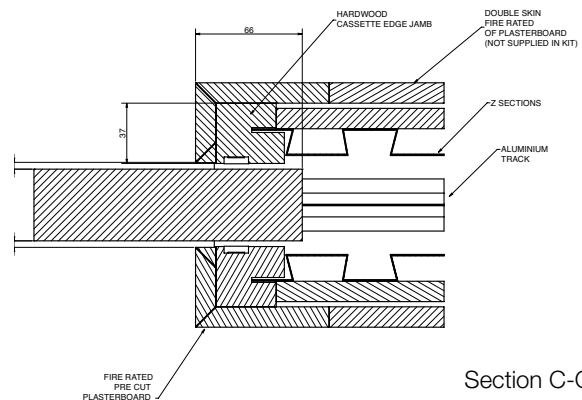
For doors over 2400mm high the use of the P5700 reinforcing kit is recommended (see page 27 for details).



Section A-A



Section B-B



Section C-C

Single door kits (only)

Standard door leaves (up to 2100mm high)

Description	Part No	SG
Standard width door leaf 626–926mm wide	PFD30 SD	SG
Intermediate width door leaf 927–1250mm wide	PFD30 ID	SG
Wide door leaf 1251–1500mm wide	PFD30 WD	SG

Tall door leaves (up to 2700mm high)

Description	Part No	SG
Tall door leaf 626–926mm wide	PFD30 TD	SG
Tall/Intermediate width door leaf 927–1250mm wide	PFD30 ITD	SG
Tall/Wide door leaf 1251–1500mm wide	PFD30 WTD	SG

Timber framed – ‘SG’ suffixed part numbers

This FD30 design allows for a solid visible timber door lining, and if desired, a Shadow Gap up to 10mm (locations as specified) between the door lining and the surrounding wall structure. Hardwood timber sections are supplied as standard within the -SG suffixed kits.

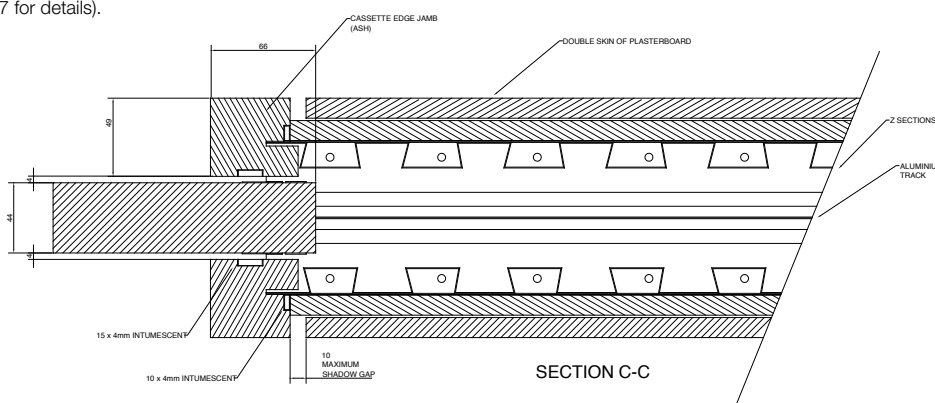
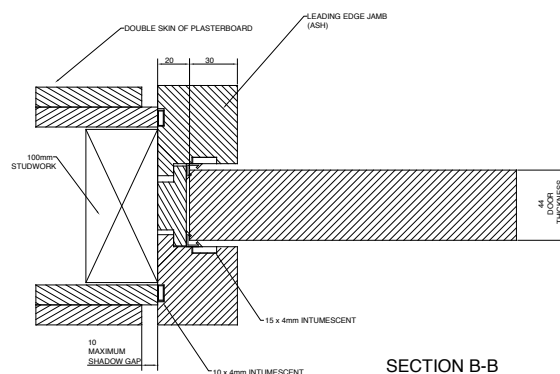
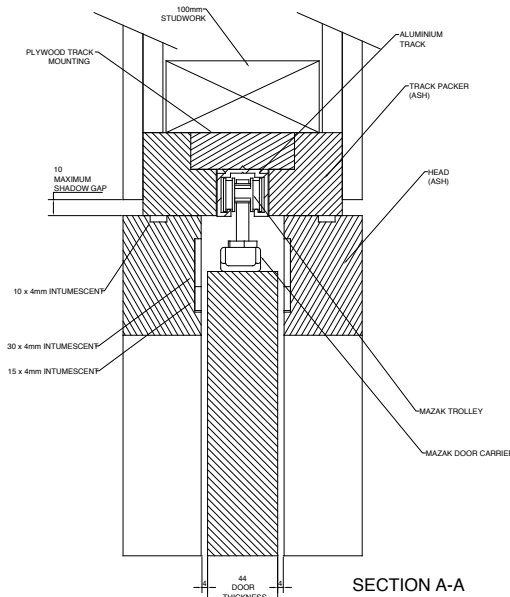


Dimensions

Double Doors

W_p = Door panel width S_p = $W_p - 9\text{mm}$
 H_p = Door panel height O_p = $(2W_p) - 131\text{mm}$
 W = $(4W_p) - 80\text{mm}$ O_h = $H_p - 35\text{mm}$
 H = $H_p + 95\text{mm}$

For doors over 2400mm high, the use of the P5700 reinforcing kit is recommended (see page 27 for details).



Double door kits

Standard door leaves (up to 2100mm high)

Description

Standard width door leaf
626–926mm wide

Part No

PFD30 DD SG

Intermediate width door leaf
927–1058mm wide

PFD30 IDD SG

Tall door leaves (up to 2480mm high)

Description

Tall door leaf
626–926mm* wide

Part No

PFD30 TDD SG

Intermediate width door leaf
927–1058mm* wide

PFD30 ITDD SG

*Please see over or contact the sales office for approved door leaf sizes for use in double pocket kits.

FD30 Fire Doors

Door leaf information

Door leaves for use in Portman FD pocket door kits are subject to certain size and door leaf construction constraints to comply with fire Certification. Generally there is an inverse relationship between the size of door panel (leaf) and the scope e.g. FD20, FD30 etc which can be achieved under the Certification. The information below and right is only relevant for doors for use within Portman FD kits.

The certification provided under: "IFC Field of Application Report PAR/10790/01 Rev A" which draws from Portman specific test evidence, door leaf test evidence and engineering assessment by IFC provides for a wide range of specific door leaf sizes and door construction types, right/below are the main UK standard requirements for further guidance please contact the sales office.

NB: Although the figures right show a wide size variation for approved door leaf sizes. For single doors the scope of size availability is limited to 2700mm high x 1500mm wide by the Pocket kit.

Notes on FD and E rated assemblies

"FD" relates to for test methodology according to BS 476: Part 22: 1987

"E" relates to for test methodology according to EN 1634-1: 2008

Both the above categories are covered by the enclosed certification although the specific scope differs slightly between them.

Calculation for Door Leaf Heights & Widths To FD30 for Area Under the Triangle

To calculate height 'Hp':

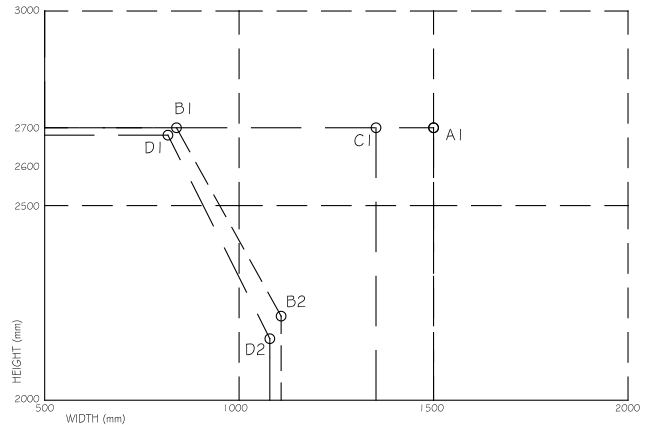
$$H_p = 4264 - (2 \times W_p)$$

To calculate width 'Wp':

$$W_p = \left(\frac{2480 - H_p}{2} \right) + 892$$

For guidance on door leaves to be installed in 60min kits, please contact the sales office.

Single door FD/E rated kits (sizes stated are per door leaf)



FD30

44mm Moralt	
A1	
Width	1500
Height	2700

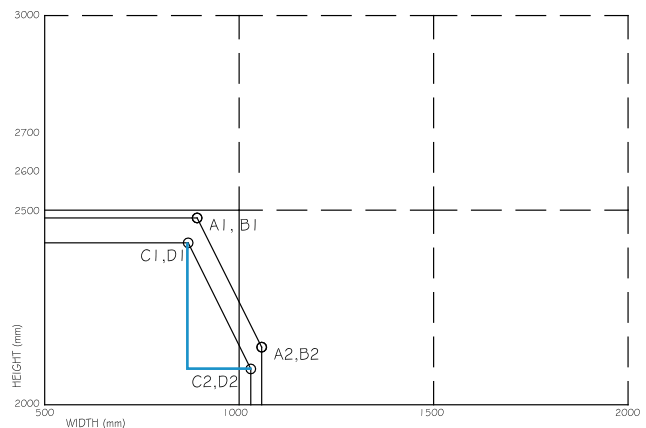
44mm Halspan Prima	
B1	B2
Width	839 1108
Height	2700 2216

E30

44mm Moralt	
C1	
Width	1352
Height	2700

44mm Halspan Prima	
D1	D2
Width	817 1079
Height	2681 2158

Double door FD/E rated kits (sizes stated are per door leaf)



FD30

44mm Moralt	
B1	B2
Width	892 1058
Height	2480 2148

44mm Halspan Prima	
C1	C2
Width	892 1058
Height	2480 2148

E30

44mm Moralt	
B1	B2
Width	869 1030
Height	2416 2092

44mm Halspan Prima	
C1	C2
Width	869 1030
Height	2416 2092

PORTMAN

Portman Pocket Door Systems Sales Office and showroom

Bilton Road
Cadwell Lane
Hitchin

SG4 0SB

Tel: 01462 444466

Fax: 01462 444433

e-mail: sales@portman-pocketdoors.co.uk

www.portman-pocketdoors.co.uk

Due to the progressive development, Portman
Pocket Door Systems reserve the right to modify
specifications and descriptions without prior notice.

