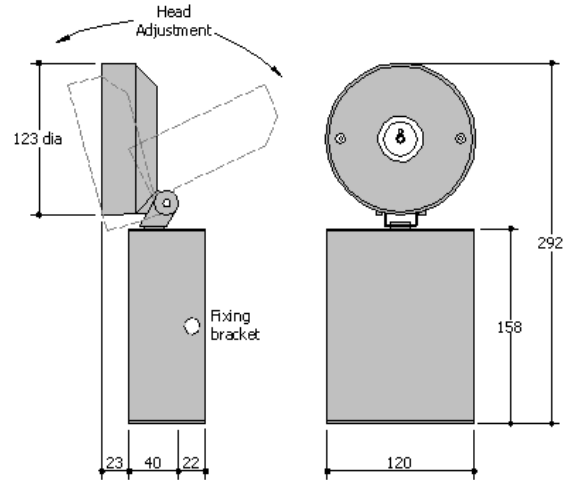
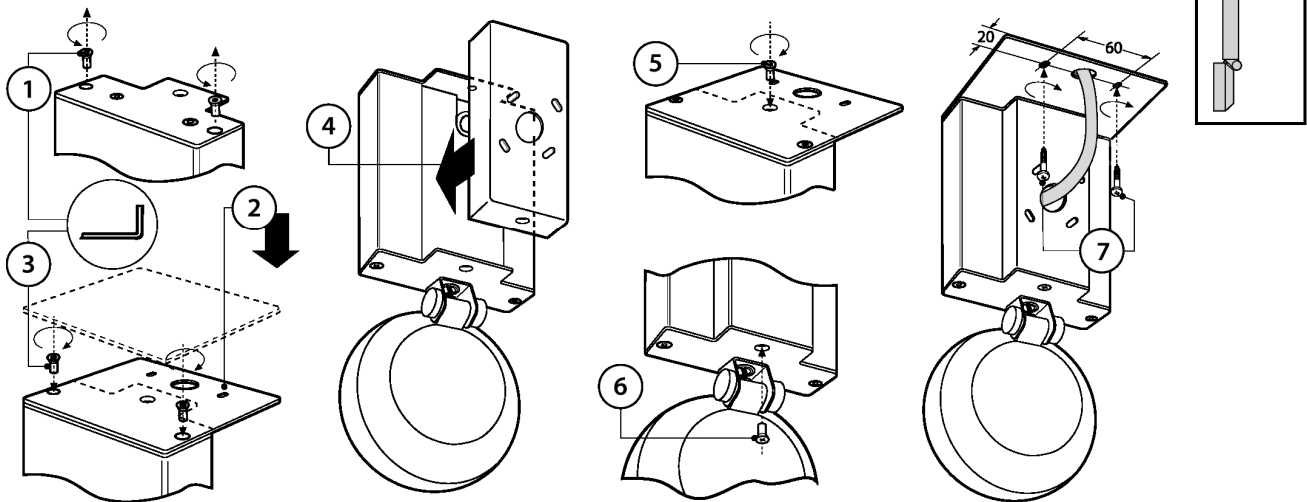


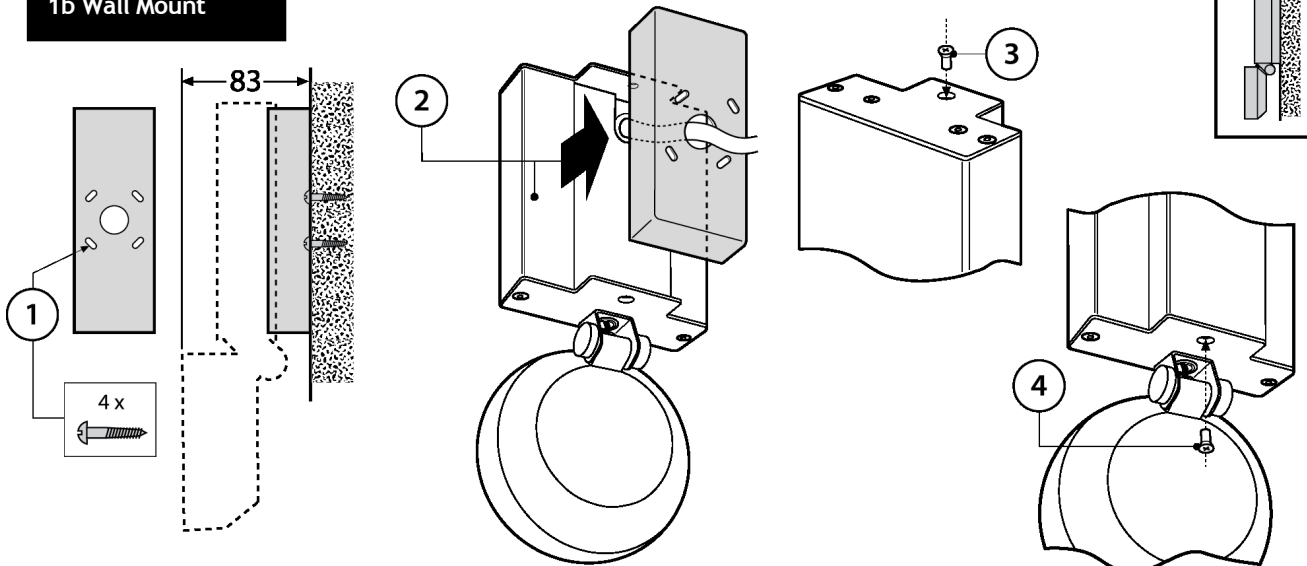
	AVUA03LA AVUN03LA
MM3	AVUA03LM AVUN03LM
AutoTest	AVUA03YL AVUN03YL
DALI	AVUA03DL AVUN03DL



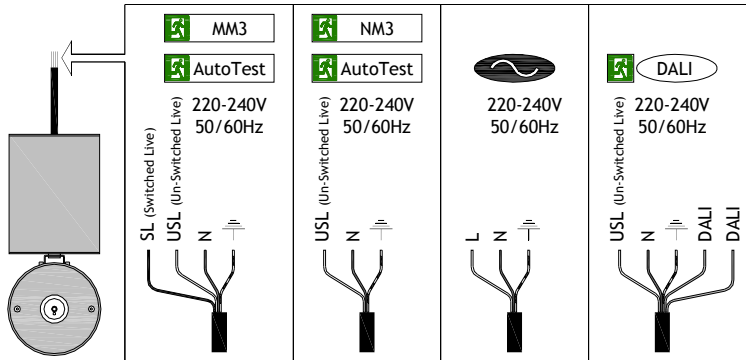
1a Ceiling Mount



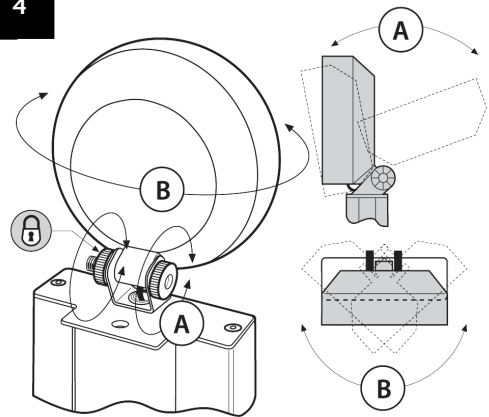
1b Wall Mount



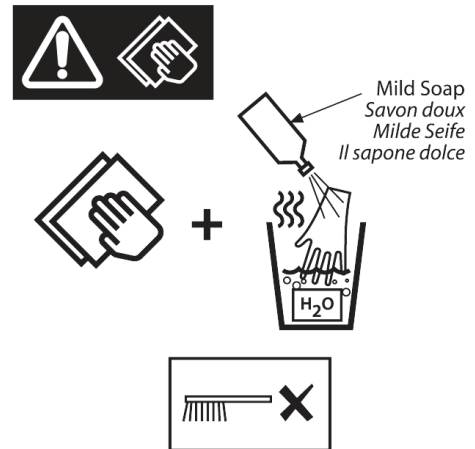
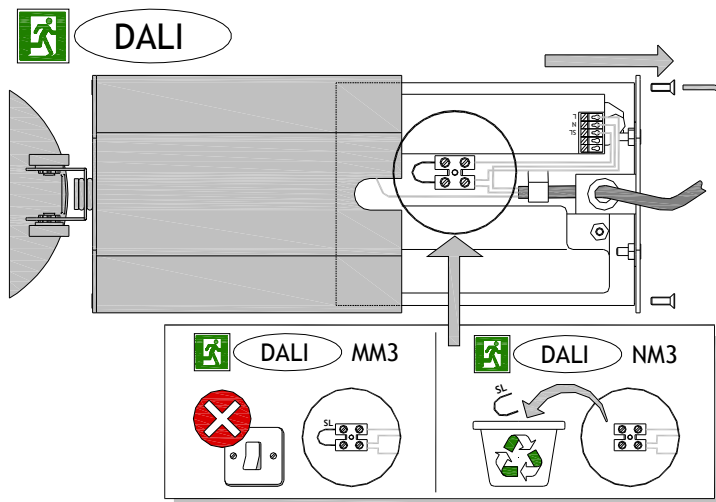
2 Connections



4



3 DALI MM/NM Options



Monthly and Annual Tests

Monthly and Annual tests should be carried out in accordance with: BS EN 50172:2004, 7.2.
For replacement LED strip contact Philip Payne Ltd.

Operation and Maintenance

Failed LED strips should be replaced promptly or the circuit switched off to avoid possible damage to control gear.
Continual operation at mains voltages in excess of the rated voltage will reduce LED and expected gear life.
This luminaire uses plastic components in its construction and when installed in environments containing chemicals, degradation may occur.
Please contact our Technical Department for advice.

Modifications

Philip Payne products should not be modified.
Any modification may render the product unsafe and will invalidate any Safety/Approval marks.
Philip Payne will not accept responsibility for any modified products or for any damage caused as a result of their modification.

Important-Safety

Before carrying out any servicing on this luminaire, ensure that the mains supply is fully isolated.
Disconnect luminaire before insulation testing of the installation.

Philip Payne Ltd

A SUBSIDIARY OF F.W. THORPE PLC
Thornhill Road, Lode Lane, Solihull, B91 2HB, England.

Tel: 0121 705 2384
Fax: 0121 711 2469

E-mail: mail@philippayne.co.uk
Website: <http://www.philippayne.co.uk>

Philip Payne Ltd registered in England No. 1361523



ISO 9001
FM55077

21LFT012_3