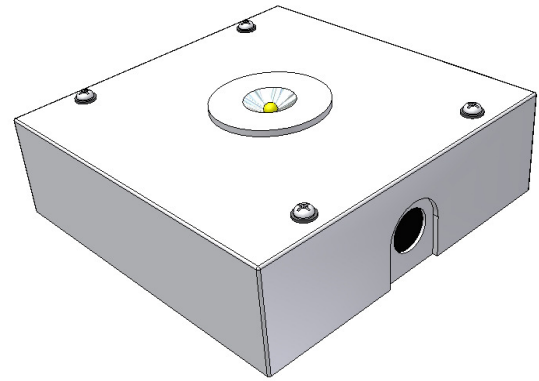




# SPRA203 IP RANGE

## IP65 Emergency LED Downlighter



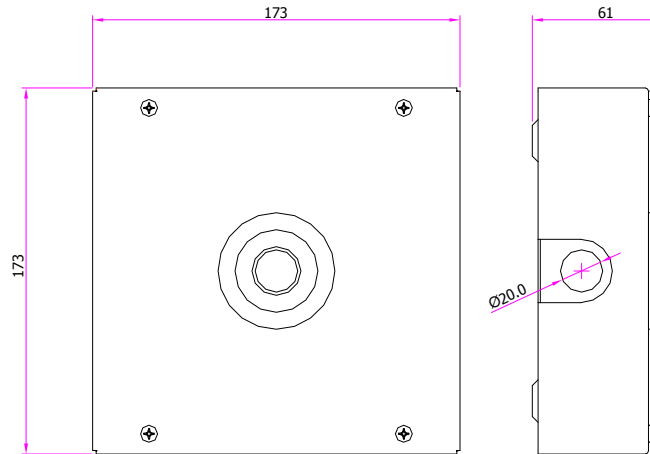
**Product:** SPRA203 IP  
**Description:** Surface ceiling mounted IP65 emergency LED downlighter with open area distribution lens.

- Standards:**
- EN60598-1
  - EN60598-2-22
  - EN55015
  - EN61547
  - EN61000-3-2
  - CE marked

**Specification:**

Total Weight: 1.5 Kg.  
 Mounting position: Surface ceiling.  
 Lamp: Power LED with open area distribution lens.  
 Voltage / current: Dependent upon gear. See table.  
 Dali versions: Dedicated DALI interface for customer controlled monitoring & reporting. Also, stand-alone automatic testing in accordance with IEC62034 if not connected to a DALI system.  
 Autotest versions: Stand-alone automatic testing in accordance with IEC62034.  
 Operating temp: Min 0°C / Max 25°C.  
 IP rating: IP65.  
 Luminous flux: 140 lm.

**Part numbers explained:** SPRA203-AA-IP-B where: 'AA' designates the gear type. See table for options & codes.  
 'IP' designates IP65 version.  
 'B' designates the cover finish. See table for options & codes.  
 NOTE: The downlighter bezel is always white for the open area & corridor distribution lens versions.



Spacing's for escape routes and open areas

Ceiling Height	Escape Route: 2m Wide.		Open Area	
	Luminaires to luminaire	Luminaire to wall	Luminaires to luminaire	Luminaire to wall
2.0 m	8.40 m	3.30 m	8.10 m	3.40 m
2.5 m	9.10 m	3.00 m	9.30 m	3.40 m
3.0 m	9.40 m	2.50 m	10.10 m	3.80 m
3.5 m	8.90 m	1.80 m	11.10 m	3.80 m
4.0 m	6.30 m	1.20 m	10.80 m	3.80 m

The spacing table is based on the following parameters:

- Maintenance factor = 0.79.
- Escape route illuminance on centre line = minimum 1.0 lx.
- Escape route illuminance on half of escape route width = minimum 0.5 lx.
- Escape route ratio of minimum to maximum illuminance on the centre line = maximum 40:1.
- Open area illuminance of empty core area, excluding a 0.5m border around the perimeter = minimum 0.5 lx.
- Open area ratio of minimum to maximum illuminance of empty core area, excluding a 0.5m border around the perimeter = maximum 40:1.

### Gear options

'AA' Code	Gear / Operation	Supply Current*
DL	220-240V AC 50/60Hz emergency module with DALI interface & self-contained 3 hour NiMH battery pack. Maintained or Non-maintained operation.	<100mA
DS	220-240V AC 50/60Hz emergency module with DALI interface & self-contained 3 hour NiMH battery pack. Non-maintained operation.	<100mA
LA	220-240V AC 50/60Hz LED driver for use with central battery / static inverter.	<100mA
LM	220-240V AC 50/60Hz emergency module with self-contained 3 hour NiMH battery pack. Maintained or Non-maintained operation.	<100mA
LN	220-240V AC 50/60Hz emergency module with self-contained 3 hour NiMH battery pack. Non-maintained operation.	<100mA
LR	93-256V DC/AC 50Hz LED driver with 230V AC $\pm$ 10% 50Hz hold off relay for use with central battery / static inverter.	<100mA @ 230V AC
PL	230V AC $\pm$ 10% 50/60Hz emergency module with 2 x normally closed potential free contacts & self-contained 3 hour NiMH battery pack. Maintained or Non-maintained operation.	<100mA
PS	230V AC $\pm$ 10% 50/60Hz emergency module with 2 x normally closed potential free contacts & self-contained 3 hour NiMH battery pack. Non-maintained operation.	<100mA
YL	220-240V AC 50/60Hz Autotest emergency module with self-contained 3 hour NiMH battery pack. Maintained or Non-maintained operation.	<100mA
YS	220-240V AC 50/60Hz Autotest emergency module with self-contained 3 hour NiMH battery pack. Non-maintained operation.	<100mA

\*Supply current during normal luminaire operation, after inrush current on start up.

### Cover finish options

'B' Code	Finish	'B' Code	Finish
G	Grey RAL9006.	V	Old penny bronze.
K	Black RAL9005.	W	White RAL9010.
		Z	Special finish (customer specification).

## Philip Payne Ltd

A SUBSIDIARY OF F.W. THORPE PLC  
Thornhill Road, Lode Lane, Solihull, B91 2HB, England.

Tel: 0121 705 2384  
Fax: 0121 711 2469

E-mail: [mail@philippayne.co.uk](mailto:mail@philippayne.co.uk)  
Website: <http://www.philippayne.co.uk>

Philip Payne Ltd registered in England No. 1361523



ISO 9001  
FM55077

SPRA203\_IP\_RANGE\_4