

# Philip Payne

## PRODUCT DATA SHEET

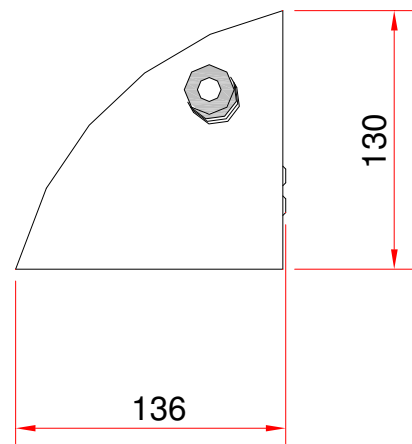
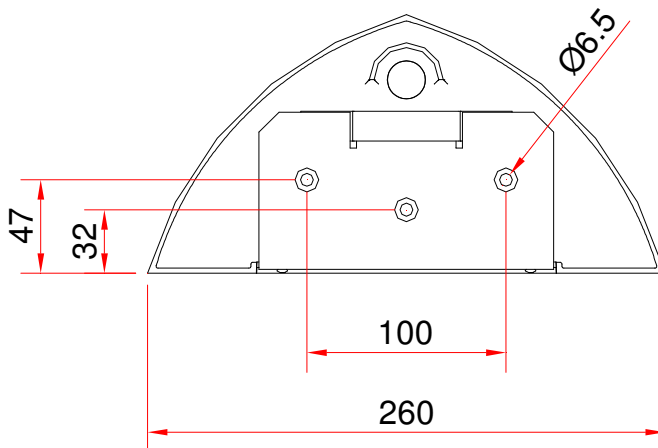
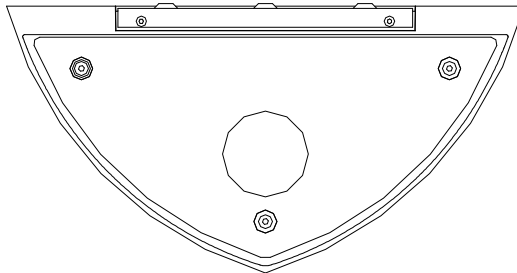
Product Type: MF100/03YL Exterior Luminaire with Photocell Switch.

Manufactured to Standards:

- EN 60598-2-22
- EN55015
- EN50082-1
- EN61000-3-2
- CE marked



<b>Supply Range</b>	230V AC $\pm$ 10% 50/60 Hz	<b>Size</b>	260mm x 136mm x 130mm
<b>Supply Current</b>	< 100 mA during normal luminaire operation, after inrush current on start up.	<b>Weight</b>	1.5 Kg
		<b>IP Rating</b>	IP65
<b>Lamp Type(s)</b>	3W Power LED	<b>Mounting Position</b>	Surface Wall Mounted
<b>Operating Temperature</b>	Min 0°C / Max +25°C	<b>Battery Supply</b>	3.6Volt 2.7Ah NiMH Self Contained
<b>Operation</b>	Maintained operation, switched via integral photocell.	<b>Emergency Duration</b>	3 Hours.
<b>Photocell Switching Level</b>	(Luminaire On) 70 Lux	<b>Autotest (Stand Alone)</b>	Automatic testing in accordance with IEC62034



### Philip Payne Ltd

A SUBSIDIARY OF F.W. THORPE PLC  
Thornhill Road, Lode Lane, Solihull, B91 2HB, England.

Tel: 0121 705 2384  
Fax: 0121 711 2469

e-mail: [mail@philippayne.co.uk](mailto:mail@philippayne.co.uk)  
Website: <http://www.philippayne.co.uk>

Philip Payne Ltd registered in England No. 1361523



ISO 9001  
FM55077



MF100-P3YL\_4