



# MF100 03 LUMINAIRE LED RANGE



### Description:

Surface mounted LED final exit emergency luminaire.

### Standards:

- EN60598-1
- EN60598-2-22
- EN55015
- EN61547
- EN61000-3-2
- CE marked

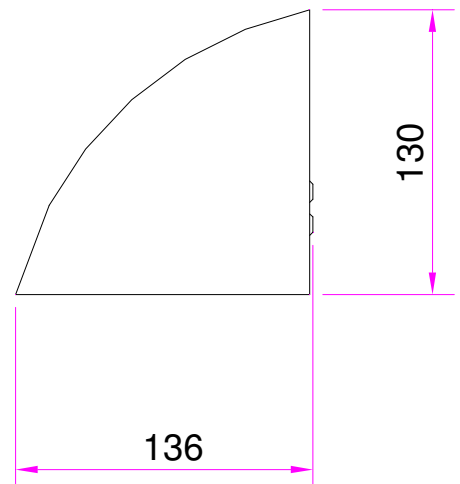
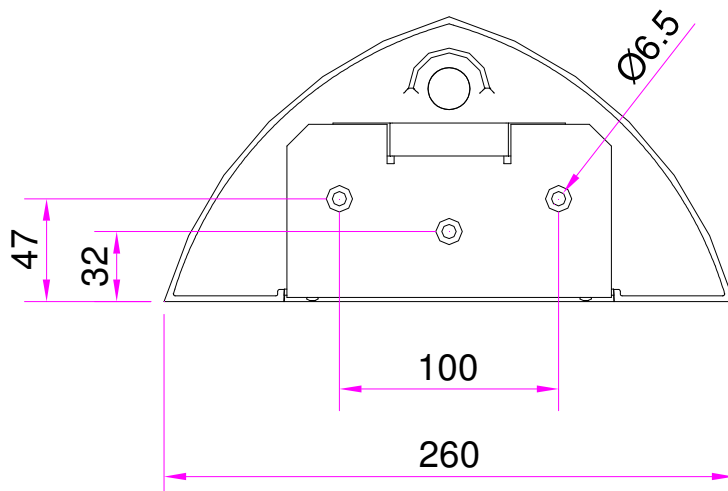
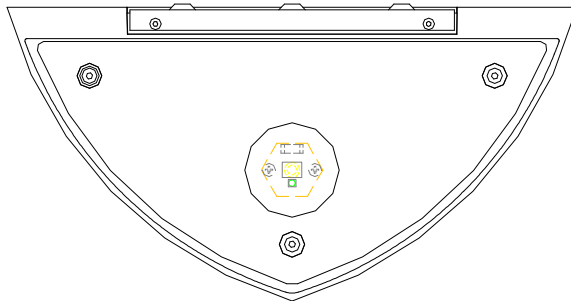
### Specification:

Total Weight: 2 Kg.  
Lamp: Power LED.  
Voltage/Current: Dependent upon gear. See table.  
Dali Versions: Dedicated DALI interface for customer controlled monitoring & reporting.  
Also, stand-alone automatic testing in accordance with IEC62034 if not connected to a DALI system.  
Stand-alone automatic testing in accordance with IEC62034.  
Autotest Versions:  
Operating Temp: Min 0°C / Max 25°C.  
IP Rating: IP66.

### Part Numbers Explained:

MF100 03 - AA - B

Where: 'AA' designates the gear type. See Table for options & 'AA' codes.  
'B' designates the finish. See Table for options & 'B' codes.



**MF100 03 Gear / Operation options**

'AA' Code	Gear / Operation	Supply Current*
<b>DL</b>	220-240V AC 50/60 Hz emergency module with DALI interface & self-contained 3 hour NiMH battery pack. Maintained or non-maintained operation.	<100mA
<b>LA</b>	220-240V AC 50/60Hz LED driver for use with central battery / static inverter.	<100mA
<b>LR</b>	93-256V DC/AC 50Hz LED driver with 230V AC $\pm$ 10% 50Hz hold-off relay for use with central battery / static inverter.	<100mA
<b>LM</b>	220-240V AC 50/60Hz emergency module with self-contained 3 hour NiMH battery pack. Maintained or non-maintained operation.	<100mA
<b>PL</b>	230V AC $\pm$ 10% 50/60Hz emergency module with 2 x normally closed potential free contacts & self-contained 3 hour NiMH battery pack. Maintained or non-maintained operation.	<100mA
<b>YL</b>	220-240V AC 50/60Hz Autotest emergency module with self-contained 3 hour NiMH battery pack. Maintained or non-maintained operation.	<100mA

\*Supply current during normal luminaire operation, after inrush current on start up.

**MF100 03 Finish options**

'B' Code	Finish
<b>G</b>	Grey RAL9006.
<b>K</b>	Black RAL9005.
<b>V</b>	Old penny bronze.
<b>W</b>	White RAL9010.
<b>Z</b>	Special finish. Customer specification to be specified on order.

**Philip Payne Ltd**

A SUBSIDIARY OF F.W. THORPE PLC  
Thornhill Road, Lode Lane, Solihull, B91 2HB, England.

Tel: 0121 705 2384  
Fax: 0121 711 2469

E-mail: [mail@philippayne.co.uk](mailto:mail@philippayne.co.uk)  
Website: <http://www.philippayne.co.uk>

Philip Payne Ltd registered in England No. 1361523



ISO 9001  
FM55077

MF100 03\_RANGE\_3