

**Description:**

Two section warning sign (upper & lower sections separately switched).  
Semi-secret legend panel (order separately).  
Flush wall mounted.

**Standards:**

- EN60598-1
- EN55015
- EN61547
- EN61000-3-2
- CE marked

**Specification:**

Weight: 2.0 Kg.  
Voltage / Current: Dependent upon gear: See Table 'A'.  
Operating Temp: Min 0°C / Max 25°C.  
IP Rating: IP30.

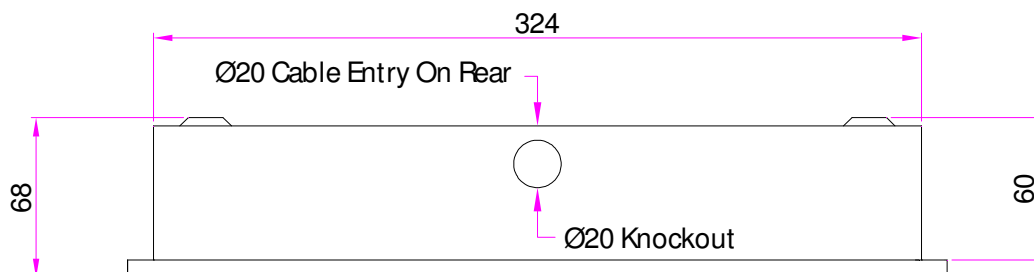
**Part Numbers Explained:**

2874F - A - B

Where: 'A' designates the lamp & gear type. See Table 'A' for options & codes.  
'B' designates the cover finish. See Table 'B' for options & codes.



Upper & Lower sections are separately switched.  
The example legend shown is for illustration only.  
The required legend is to be specified on order.



**Table A: Lamp & Gear Options**

'A' Codes	Lamp & Gear Upper Section	Lamp & Gear Lower Section	Supply Current*
<b>B</b>	8W T5 HF gear: 220-240V AC 50/60Hz	2 x 15W SBC 220-240V AC 50Hz	<250mA
<b>F</b>	8W T5 HF gear: 220-240V AC 50/60Hz	8W T5 HF gear: 220-240V AC 50/60Hz	<200mA
<b>IL</b>	3W LED light strip & 12-24V DC LED Driver	3W LED light strip & 12-24V DC LED Driver	<700mA
<b>L</b>	3W LED light strip & driver 220-240V AC 50/60Hz	3W LED light strip & driver 220-240V AC 50/60Hz	<100mA
<b>P</b>	2 x 7W TC-S HF Gear: 220-240V AC 50/60Hz	2 x 15W SBC 220-240V AC 50Hz	<300mA
<b>T</b>	2 x 15W SBC 220-240V AC 50Hz	2 x 15W SBC 220-240V AC 50Hz	<300mA

\*Supply current during normal luminaire operation, after inrush current on start up.

**Table B: Finish Options**

'B' Codes	Finish	'B' Codes	Finish
<b>No Suffix</b>	Gloss white as standard.	<b>K</b>	Black RAL9005.
<b>B</b>	Brass. Polished & lacquered.	<b>R</b>	Satin chrome.
<b>C</b>	Polished chrome.	<b>V</b>	Old penny bronze.
<b>D</b>	Brass made antique.	<b>Z</b>	Special finish: customer specification.
<b>G</b>	Grey RAL9006.		

## Philip Payne Ltd

A SUBSIDIARY OF F.W. THORPE PLC  
Thornhill Road, Lode Lane, Solihull, B91 2HB, England.

Tel: 0121 705 2384

Fax: 0121 711 2469

e-mail: [mail@philippayne.co.uk](mailto:mail@philippayne.co.uk)

Website: <http://www.philippayne.co.uk>

Philip Payne Ltd registered in England No. 1361523



ISO 9001  
FM55077

