

# PRODUCT DATA SHEET

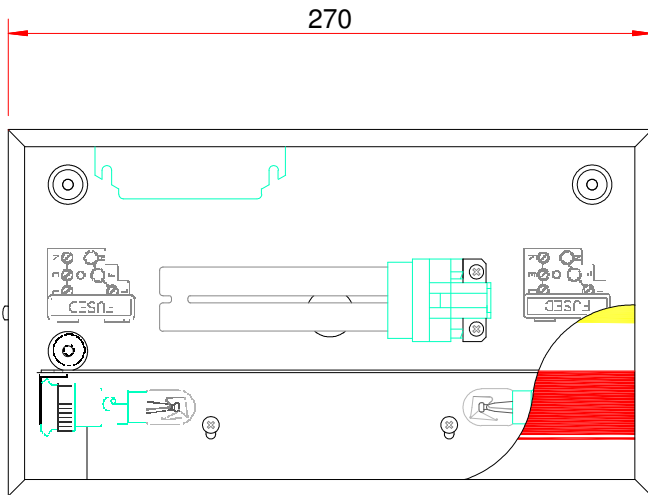
## Product Type: 2850SP

Manufactured to meet Standards:

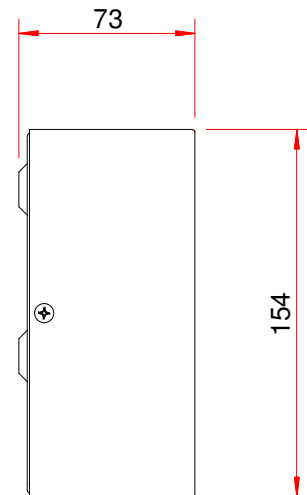
- EN 60598-1
- EN55015
- EN50082-1
- EN60555-2
- CE marked



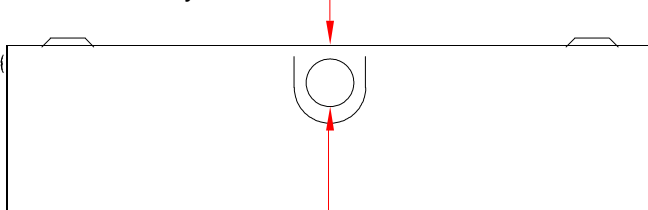
<b>Voltage Range</b>	230 - 240v ac $\pm$ 10%	<b>Overall Size</b>	270mm x 154mm x 73mm
<b>Frequency Range</b>	50 / 60Hz	<b>Mounting Position</b>	Surface Wall
<b>Supply Current</b>	< 150 mA Peak	<b>Weight</b>	2.5 Kg
<b>Operating Temperature</b>	Min 0°C / Max +25°C	<b>Ballast Lumen Factor</b>	N/a
<b>Lamp Type(s) : Upper</b>	1 X 7W TC-S Fluorescent	<b>Operation Mode : Upper</b>	Mains HF
<b>Lamp Type(s) : Lower</b>	2 x 10W SBC Tungsten	<b>Operation Mode : Lower</b>	Mains
<b>Battery Supply</b>	N/a	<b>Emergency Mode</b>	N/a
<b>IP Rating</b>	IP30	<b>Finish</b>	Gloss White as standard



Upper & Lower sections are separately switched



Ø20 Cable Entry On Rear



Ø20 Knockout

## Philip Payne Ltd

A SUBSIDIARY OF F.W. THORPE PLC  
Thornhill Road, Lode Lane, Solihull, B91 2HB, England.

Tel: 0121 705 2384  
Fax: 0121 711 2469  
Email: [mail@philippayne.co.uk](mailto:mail@philippayne.co.uk)  
<http://www.philippayne.co.uk>

Philip Payne Ltd registered in England No. 1361523



ISO 9001  
FM55077

