

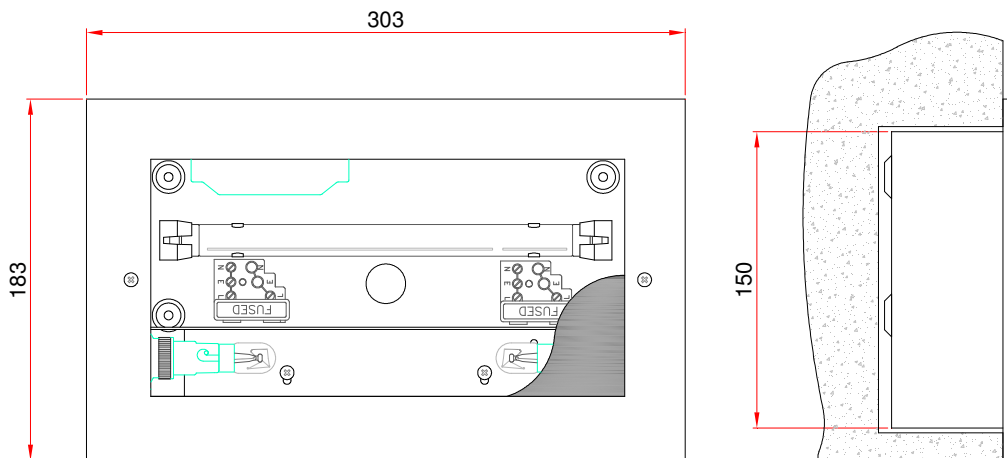
Product Type: 2850FB

Manufactured to meet standards:

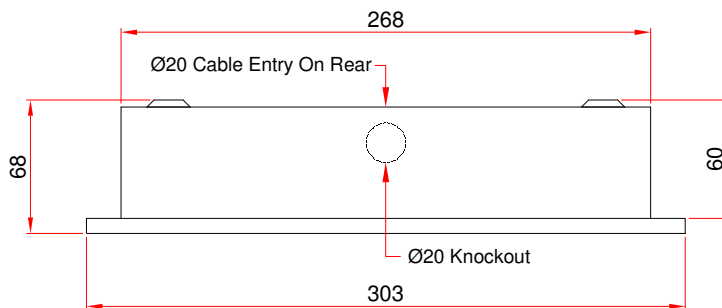
- EN 60598-1
- EN55015
- EN50082-1
- EN60555-2
- CE marked



Supply Range	220-240V AC 50/60Hz	Overall Size	303mm x 183mm x 68mm
Supply Current	< 150 mA Peak	Mounting Position	Flush Wall
Operating Temperature	Min 0°C / Max +25°C	Weight	2.5 Kg
		Recess Size	272mm x 154mm x 60mm Deep
Lamp Type : Upper	1 x 6W T5 Fluorescent	Operation Mode: Upper	Mains HF
Lamp Type : Lower	2 x 10W SBC Tungsten	Operation Mode: Lower	Mains
IP Rating	IP30	Finish	Gloss White as standard



Upper & Lower sections are separately switched



Philip Payne Ltd

A SUBSIDIARY OF F.W. THORPE PLC
Thornhill Road, Lode Lane, Solihull, B91 2HB, England.

Tel: 0121 705 2384

Fax: 0121 711 2469

E-mail: mail@philippayne.co.uk

Website: <http://www.philippayne.co.uk>

Philip Payne Ltd registered in England No. 1361523



ISO 9001
FM55077

