

Description:

Back lit emergency exit sign complete with polycarbonate legend panel.
Surface wall mounted.

Standards:

- EN60598-1
- EN60598-2-22
- EN55015
- EN61547
- EN61000-3-2
- CE marked

Specification:

Total Weight: 2.0Kg.
Voltage / Current: Dependent upon gear: See Table 'AA'.
Dali Versions: Dedicated DALI interface for customer controlled monitoring & reporting. Also, stand alone automatic testing in accordance with IEC62034 if not connected to a DALI system.
Autotest Versions: Stand alone automatic testing in accordance with IEC62034.
Operating Temp: Min 0°C / Max 25°C.
IP Rating: IP30.



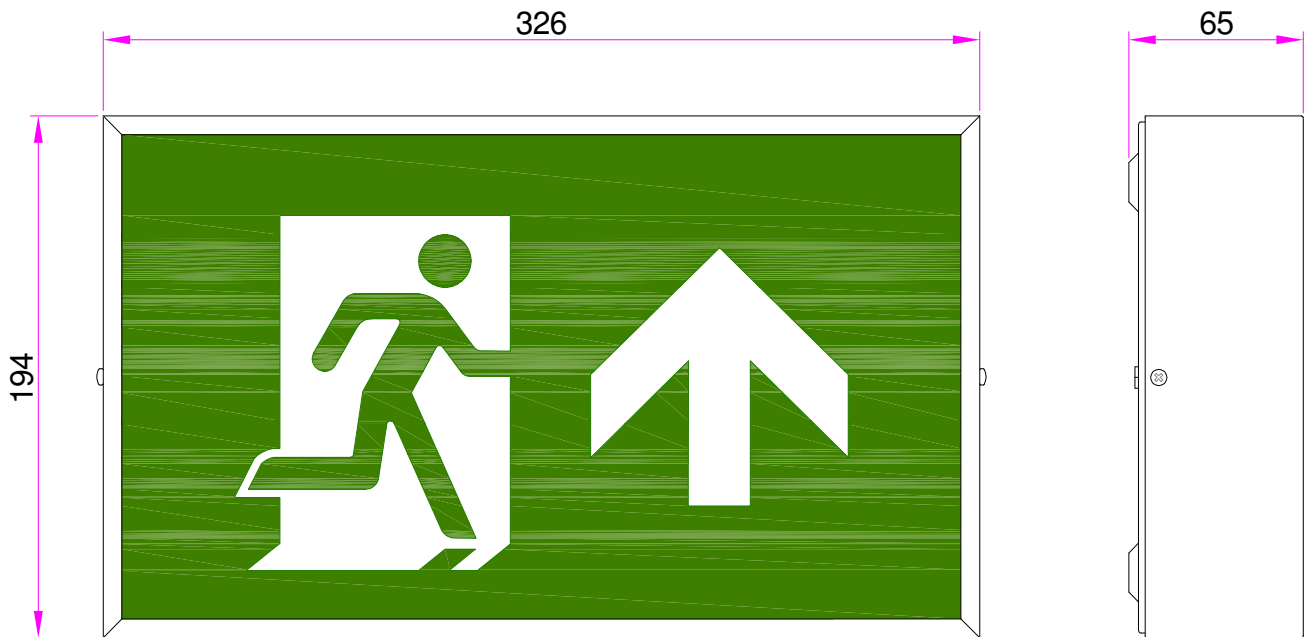
Part Numbers Explained:

1880250SL-AA-B

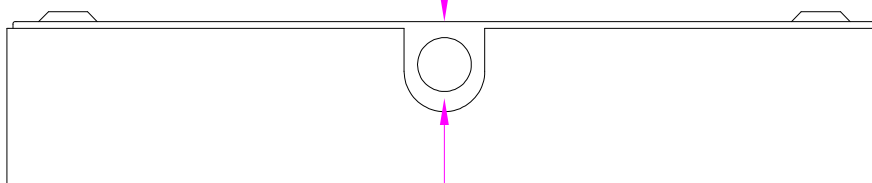
Where:-

'AA' designates the lamp & gear type.
See Table 'AA' for options & codes.

'B' designates the finish.
See Table 'B' for options & codes.



Ø20 Cable Entry & BESA
Box Fixings On Rear



Ø20 Knockout

Table 'AA': Gear / Operation

'AA' Codes	Lamp	Gear / Operation	Supply Current*
HF	8W T ₅	220-240V DC/AC 50/60Hz HF ballast for use with central battery / static inverter.	<100mA
IV	8W T ₅	24V, 50V or 110V AC/DC inverter for use with central battery / static inverter. Required voltage to be stated on order.	<850mA
MM	8W T ₅	230V AC ± 10% 50/60Hz emergency module with self-contained 3 hour NiMH battery pack. Maintained or non-maintained operation.	<100mA
NM	8W T ₅	230V AC ± 10% 50/60Hz emergency module with self-contained 3 hour NiCad battery pack. Non-maintained operation only.	<100mA
NS	8W T ₅ x 2	1 emergency lamp via 230V AC ± 10% 50/60Hz non-maintained emergency module with self contained 3 hour NiCad battery pack. 1 lamp maintained via 220-240V DC/AC 50/60Hz HF ballast.	<200mA
TF	8W T ₅ x 2	220-240V DC/AC 50/60Hz HF ballast x 2 separately switched. For use with mains supply and central battery / static inverter.	<200mA
YM	8W T ₅	230V AC ± 10% 50/60Hz Autotest emergency module with self-contained 3 hour NiCad battery pack. Maintained via 220-240V AC 50/60Hz HF ballast.	<200mA
YN	8W T ₅	230V AC ± 10% 50/60Hz Autotest emergency module with self-contained 3 hour NiCad battery pack. Non-maintained operation only.	<100mA
DA	1W LED strip	220-240V AC 50/60 Hz LED driver with DALI interface for use with central battery / static inverter.	<100Ma
DL	1W LED strip	220-240V AC 50/60 Hz emergency module with DALI interface & self-contained 3 hour NiMH battery pack. Maintained or non-maintained operation.	<100Ma
LA	1W LED strip	220-240V DC/AC 50/60 Hz LED driver for use with central battery / static inverter.	<100mA
LR	1W LED strip	93-256V DC/AC 50Hz LED driver with 230V AC ± 10% 50Hz hold off relay for use with central battery / static inverter.	<100mA
LM	1W LED strip	220-240V AC 50/60Hz emergency module with self-contained 3 hour NiMH battery pack. Maintained or non-maintained operation.	<100mA
PL	1W LED strip	230V AC ± 10% 50/60Hz Autotest emergency module with self-contained 3 hour NiMH battery pack. Maintained or Non-maintained operation.	<100mA
YL	1W LED strip	220-240V AC 50/60Hz Autotest emergency module with self contained 3 hour NiMH battery pack. Maintained or non-maintained operation.	<100mA

*Supply current during normal luminaire operation, after inrush current on start up.

Table 'B': Finish Options

'B' Codes	Finish	'B' Codes	Finish
B	Brass. Polished & lacquered.	R	Satin chrome.
C	Polished chrome.	V	Old penny bronze.
D	Brass made antique.	W	White RAL9010.
G	Grey RAL9006.	Z	Special finish: customer specification.
K	Black RAL9005.		

Philip Payne Ltd

A SUBSIDIARY OF F.W. THORPE PLC
Thornhill Road, Lode Lane, Solihull, B91 2HB, England.

Tel: 0121 705 2384
Fax: 0121 711 2469

E-mail: mail@philippayne.co.uk
Website: <http://www.philippayne.co.uk>

Philip Payne Ltd registered in England No. 1361523



ISO 9001
FM55077

1880250SL_RANGE_4