

Description:

Single sided back lit emergency exit sign complete with polycarbonate legend panel.
Surface wall or ceiling mounted.

Standards:

- EN60598-2-22
- EN55015
- EN50082-1
- EN60555-2
- CE marked

Specification:

Total Weight: 3 Kg.
Voltage / Current: Dependent upon gear: See Table 'AA'.
Dali Versions: Dedicated DALI interface for customer controlled monitoring & reporting. Also, stand alone automatic testing in accordance with IEC62034 if not connected to a DALI system.
Autotest Versions: Stand alone automatic testing in accordance with IEC62034.
Operating Temp: Min 0°C / Max 25°C.
IP Rating: IP54.



Part Numbers Explained:

1880300SC-AA-B

Where:-

'AA' designates the gear type.
See Table 'AA' for gear options & codes.

'B' designates the finish.
See Table 'B' for finish options & codes.

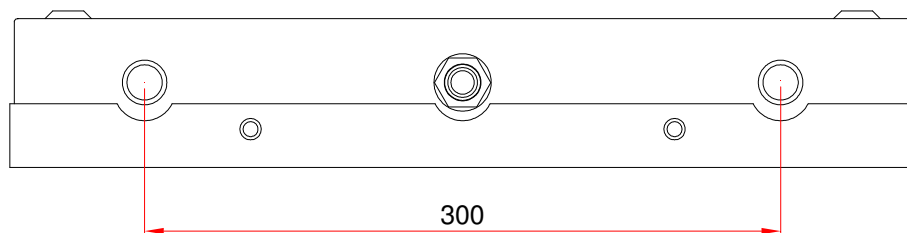
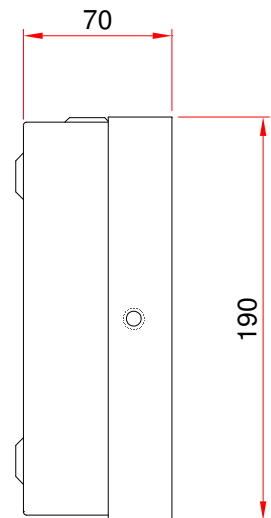
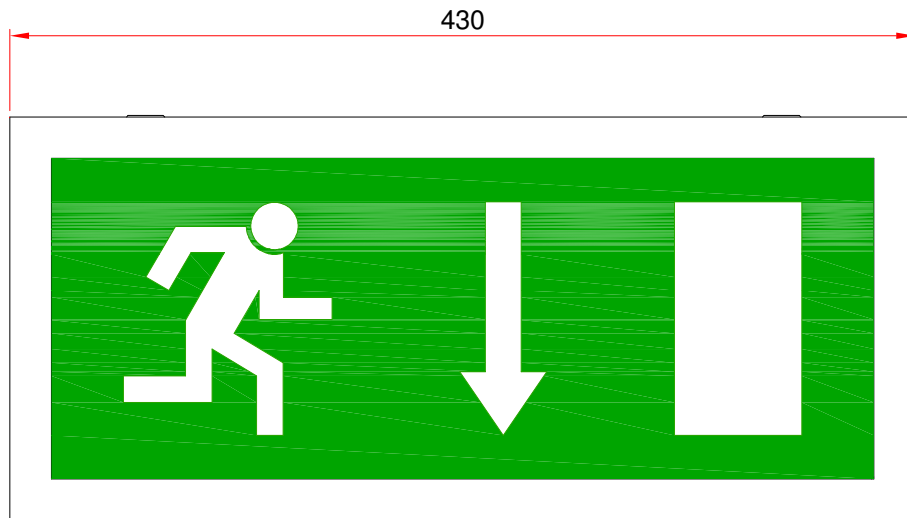


Table 'AA': Gear / Operation

| 'AA' Codes | Lamp | Gear / Operation | Supply Current |
|------------|--------------|---|----------------|
| DM | 8W T5 | 220-240V AC 50/60Hz DALI emergency module with self contained 3 hour NiMH battery pack. Maintained via 220-240V AC 50/60Hz HF ballast. | <200mA |
| DN | 8W T5 | 220-240V AC 50/60Hz DALI emergency module with self contained 3 hour NiMH battery pack. Non-maintained operation only. | <100mA |
| HF | 8W T5 | 220-240V DC/AC 50/60Hz HF ballast for use with central battery / static inverter. | <100mA |
| IV | 8W T5 | 50V or 110V AC/DC inverter for use with central battery / static inverter. Required voltage to be stated on order. | <850mA |
| MM | 8W T5 | 230V AC \pm 10% 50/60Hz emergency module with self contained 3 hour NiMH battery pack. Maintained or non-maintained operation. | <100mA |
| NM | 8W T5 | 230V AC \pm 10% 50/60Hz emergency module with self contained 3 hour NiCad battery pack. Non-maintained operation only. | <100mA |
| NS | 8W T5 x 2 | 1 emergency lamp via 230V AC \pm 10% 50/60Hz non-maintained emergency module with self contained 3 hour NiCad battery pack. 1 lamp maintained via 220-240V DC/AC 50/60Hz HF ballast. | <200mA |
| TF | 8W T5 x 2 | 220-240V DC/AC 50/60Hz HF ballast x 2 separately switched. For use with mains supply and central battery / static inverter. | <200mA |
| YM | 8W T5 | 230V AC \pm 10% 50/60Hz Autotest emergency module with self contained 3 hour NiCad battery pack. Maintained via 220-240V AC 50/60Hz HF ballast. | <200mA |
| YN | 8W T5 | 230V AC \pm 10% 50/60Hz Autotest emergency module with self contained 3 hour NiCad battery pack. Non-maintained operation only. | <100mA |
| DL | 1W LED strip | 220-240V AC 50/60 Hz emergency module with DALI interface & self contained 3 hour NiMH battery pack. Maintained or non-maintained operation. | <100mA |
| LA | 1W LED strip | 220-240V DC/AC 50/60 Hz LED driver for use with central battery / static inverter. | <100mA |
| LR | 1W LED strip | 93-256V DC/AC 50Hz LED driver with 230V AC \pm 10% 50Hz hold off relay for use with central battery / static inverter. | <100mA |
| LM | 1W LED strip | 220-240V AC 50/60Hz emergency module with self contained 3 hour NiMH battery pack. Maintained or non-maintained operation. | <100mA |
| YL | 1W LED strip | 220-240V AC 50/60Hz Autotest emergency module with self contained 3 hour NiMH battery pack. Maintained or non-maintained operation. | <100mA |

Table 'B': Finish Options

| 'B' Codes | Finish | 'B' Codes | Finish |
|-----------|------------------------------|-----------|---|
| B | Brass. Polished & lacquered. | R | Satin chrome. |
| C | Polished chrome. | V | Old penny bronze. |
| D | Brass made antique. | W | White RAL9010. |
| G | Grey RAL9006. | Z | Special finish: customer specification. |
| K | Black RAL9005. | | |

Philip Payne Ltd

A SUBSIDIARY OF F.W. THORPE PLC
Thornhill Road, Lode Lane, Solihull, B91 2HB, England.

Tel: 0121 705 2384

Fax: 0121 711 2469

E-mail: mail@philippayne.co.uk

Website: <http://www.philippayne.co.uk>

Philip Payne Ltd registered in England No. 1361523



ISO 9001
FM55077

