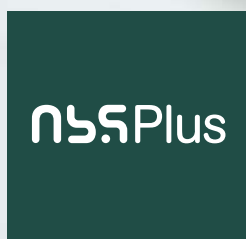
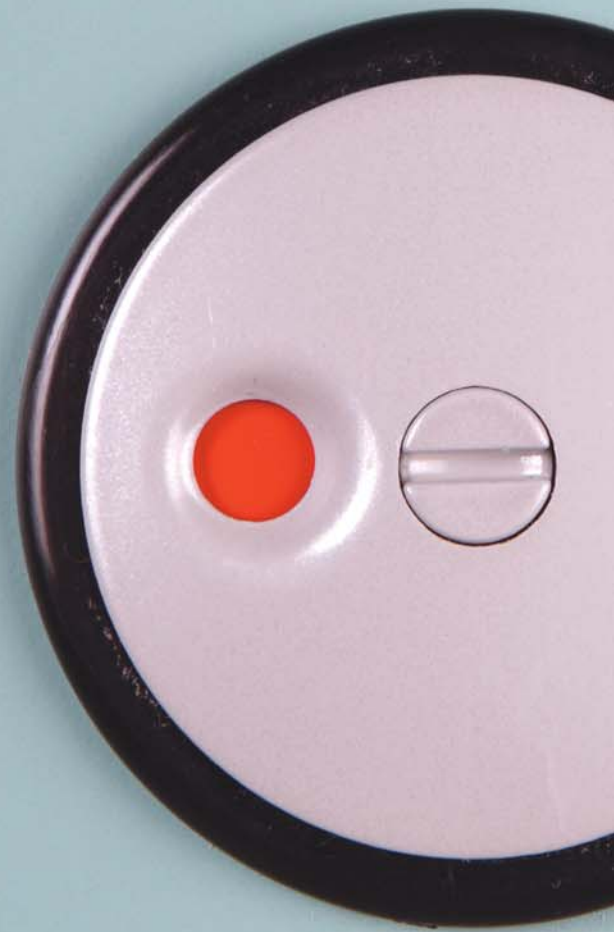


PENDOCK CUBICLES

www.pendockcubicles.co.uk

WASHROOM SYSTEMS



Featuring

*Armitage
Shanks*



The mark of responsible forestry

TT-COC-002842

© 1996 Forest Stewardship Council A.C.

The Environment

To improve the environmental credentials of their buildings, many clients, architects and contractors are specifying timber and wood-derived products with chain of custody certification. But, in the area of cubicles and washrooms, these moves have often been thwarted as there have been few realistic options. And the challenge has been exacerbated by the UK Government Timber Procurement Policy.

Pendock has been a recognised leader for over 20 years and today, Pendock Cubicles can offer a range of cubicle partitions with full Forest Stewardship Council (FSC) Chain of Custody Certification.

So, don't compromise your environmental principles, SPECIFY PENDOCK CUBICLES WITH FSC CHAIN OF CUSTODY.

The UK Government's Timber Procurement Policy

The Government's timber procurement policy now requires that all timber and wood-derived products procured originate from:

- either legal and sustainable.
- or FLEGT licensed or equivalent sources ... (not expected until late 2010).

This policy is mandatory for all Central Government Departments, Executive Agencies and Non Departmental Public Bodies. Local Authorities and other public bodies usually have their own policies that may stipulate only FSC or PEFC certified product.

It can be a confusing area and The Department for Environment Food and Rural Affairs (DEFRA) has set up The Central Point of Expertise on Timber Procurement (CPET) to help educate clients, specifiers and contractors on these issues. They have standard contract clauses on their website, www.cpet.org.uk along with a multitude of useful information. CPET run a helpline, 01865 243766 and regular training workshops.

Government buyers should request evidence from contractors that supplied products comply with the mandated policy.

CPET comment:

For non recycled timber products two types of evidence are accepted:

- Category A evidence is independent certification under a scheme recognised by the UK Government. These currently include FSC (Forest Stewardship Council) and PEFC (Programme for the Endorsement of Forest Certification).
- Category B evidence is alternative documentary evidence that provides assurance that the source is legal and sustainable and that there is a robust chain of custody.

Alumasc Interior Building Products Limited, the company behind the Pendock brands can supply cubicles with full FSC chain of custody under the scope of our certificate TT-COC-002842. This enables our customers to gain Category A evidence.

PENDOCK CUBICLES

WASHROOM SYSTEMS

The scope, design flexibility and sheer versatility of Pendock Cubicles systems means that they provide the perfect solution whatever the specification, demands or environment.

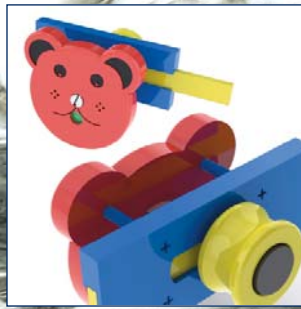
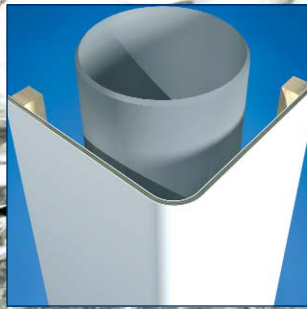
Our in-depth knowledge of washroom environments together with our wide experience of working with architects, designers and specifiers on a broad range of washroom projects enables us to integrate innovation, aesthetics and practicality in all our cubicle and washroom solutions.

From next-day delivery cubicles through to bespoke designed integrated plumbing systems featuring Armitage Shanks sanitary ware and

custom finishes we maintain complete control over every facet of the design and production through our dedicated, single site manufacturing facilities in the UK.

Our attention to detail, complete control over manufacturing and significant investment has combined to develop the Pendock Edge.

Whatever the specification or sector, whether it's commercial, public buildings, leisure facilities or schools and education the Pendock Cubicles range is designed to meet every requirement, delivering quality aesthetics, value and where required Forest Stewardship Council (FSC) certification .



Contents

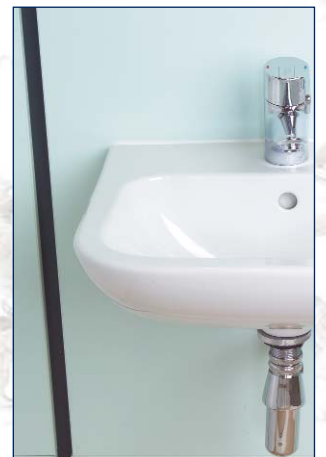
Rapide Cubicles	4 & 5
Robuste Cubicles	6 & 7
Renaissance Cubicles	8 & 9
Ecole Washrooms for Schools	10 & 11
Matruxe Framework Systems	12 & 13
Matruxe Vanity	14
Ironmongery and Metal Pilasters	15
Sanitary Ware, Taps, Mixers, Water Management and Accessories	16
The Pendock Edge	17

Rapide Cubicles

Rapide MFC cubicles provide the perfect, inexpensive and easy-fix solution for single and multiple cubicle installations in corner, island or between-walls configurations.

Designed from the outset as a durable, versatile and value-for-money range, two options are available to meet the differing needs of either a fast, next-day delivery or greater choice of sizes and finishes with slightly longer lead time.

All Rapide cubicles are manufactured from pre-drilled, melamine faced chipboard (MFC). The range is designed as a modular system using standard, interchangeable components and ironmongery for simple specification, ordering and installation.



Featuring *Armitage
Shanks*

Rapide Next Day

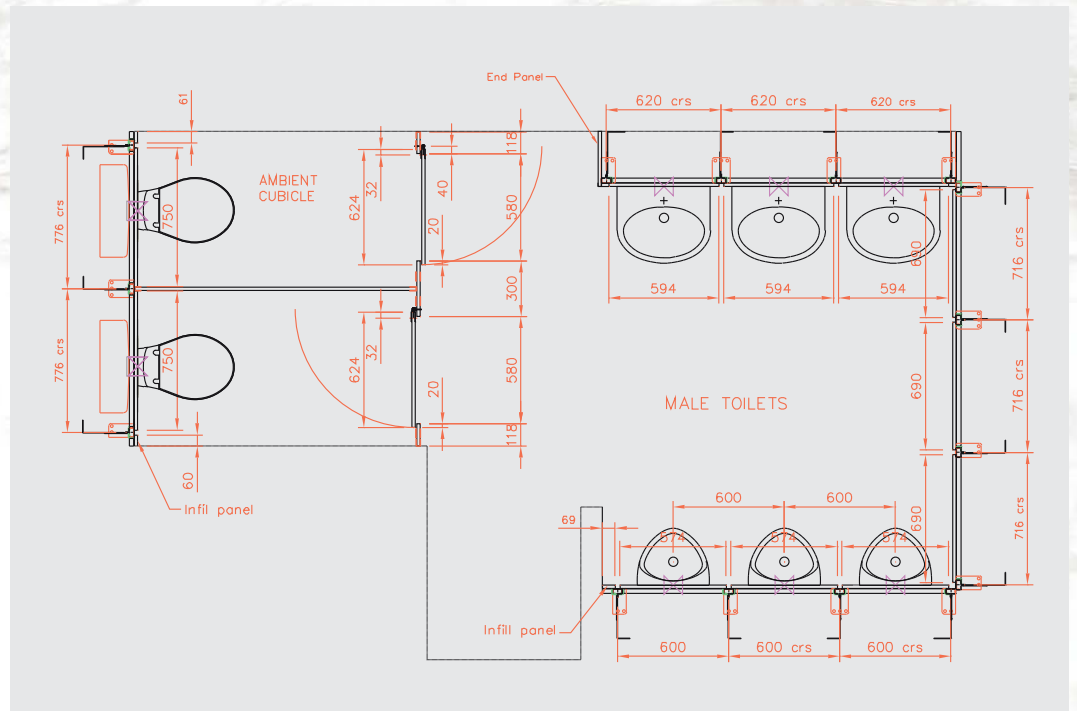
Where speed of delivery is absolutely critical, we offer a fast turnaround and next-day delivery to ensure installation deadlines can be met and 'last-minute' contracts run smoothly. The next-day range is available in standard panel sizes and three standard colour options of ivory, light grey and dark grey speckle. All ironmongery and fittings are manufactured from rust-free, non-ferrous alloys for long life and durability.

Rapide

Available in the widest range of colours, textured finishes and designs to meet most project requirements and tastes, Rapide delivers an outstanding blend of design, practicality and economy, all on short lead times and with Moisture Resistant Melamine Faced Chipboard (MRMFC) as standard.

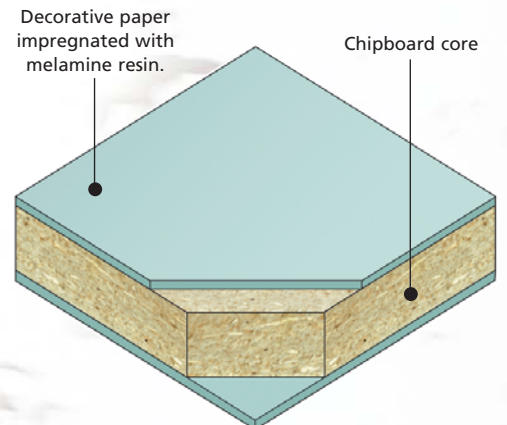
In addition to standard door widths and partition sizes, specifiers can also select from non-standard sizes to meet exact project dimensions and requirements.

The Pendock edge is used on all Rapide cubicles.



MFC Melamine Faced Chipboard

- Chipboard with melamine faces offers a high resistance to humidity.
- Moisture resistant (MR) grade options enhance still further the resistance to humidity.
- Cost-effective solution for all non-wet area applications.
- All decors available in HPL for vanity units.



Robuste Cubicles

Our stylish, easy-to-install, Robuste, compact laminate cubicles range provides high durability with excellent value and design flexibility to meet the demands of most cubicle projects.

By using modular, pre-drilled construction, standard panel dimensions together with complementary or contrasting ironmongery, Robuste cubicles can be specified with any finish or colour combination to meet exact interior design specifications.

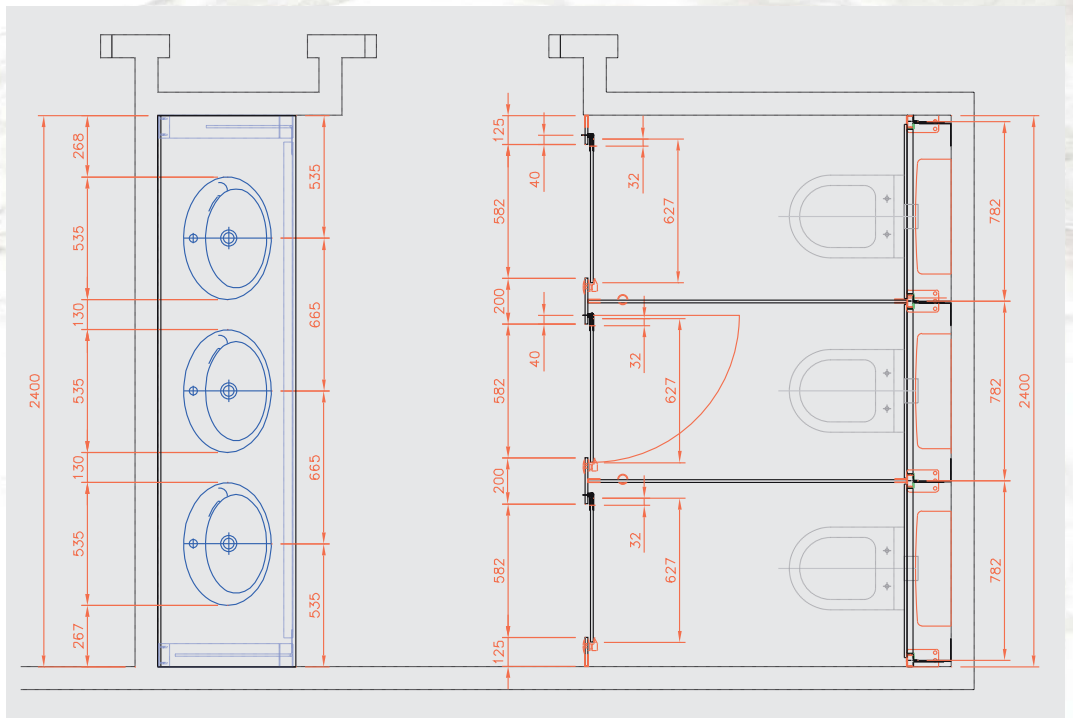


Featuring *Armitage
Shanks*



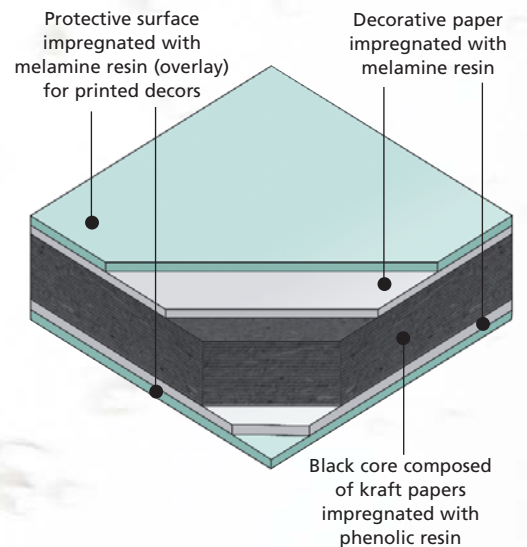
Efficient on-site manufacturing, finishing and order management processes enables us to maintain direct control over every facet of cubicle design, which means that lead times are kept low, allowing orders to be completed and dispatched quickly.

In addition to our range of standard and optional finishes, one-off custom designs can also be produced in the Robuste range to give any washroom a unique appeal.



Solid Grade Laminate

- Exceptional resistance to water and impact.
- The ideal product for demanding, high traffic environments such as swimming pools, changing rooms and shower areas.
- Meets the highest hygiene and sterility requirements due to its non-porous edges and inert surface. Allows for easy cleaning and maintenance.
- All edges are bullnosed to avoid chipping and sharp corners.



Renaissance Cubicles

Renaissance high-pressure, laminate (HPL) cubicles offer the widest range of finish to the specifier, from the very darkest, real-wood laminate to photographic imagery - and everything in between. The Renaissance range also offers the benefits of the 'Pendock Edge' (See Page 17) and excellent durability.

Renaissance back panels can be decorated with any of the range's wide selection of design options. Alternatively, designs can be mixed and matched with those from the Rapide or Robuste ranges.



Featuring *Armitage
Shanks*

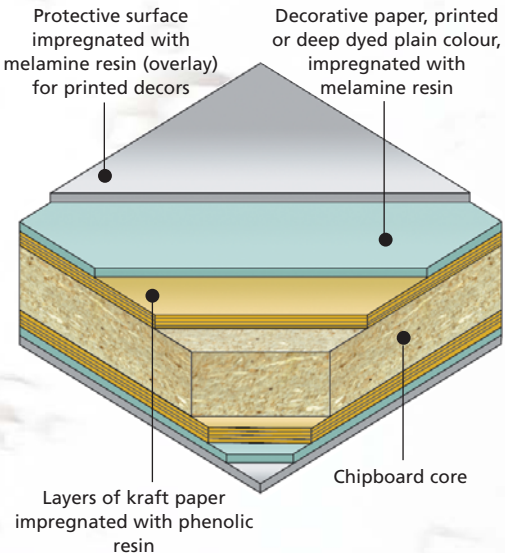
Efficient on-site manufacturing, finishing and order-management processes enable us to maintain direct control over every facet of our cubicle design. This means that Pendock lead times are kept low, with orders being completed and dispatched quickly.

When short lead times are the priority, a list is available showing the standard colours of the Renaissance range. This list is included as an insert to the brochure, as the colours are often updated to meet the latest trends and customer demand.



High Pressure Laminates

- High impact and scratch resistance
- Total design freedom

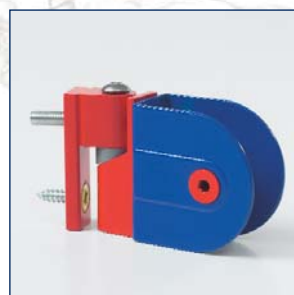
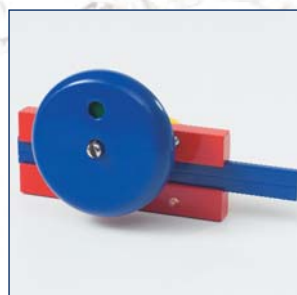


Ecole washrooms for schools

Better design and a greater understanding of children's needs at school has already begun to change washroom environments in education and the Ecole range was designed by us to accelerate that change.

Flexibility of design and the ability to 'customise' the panel finishes using graphics, photographs and even the colours of the local football club, all help to improve the school washroom.

Pendock Cubicles were involved with the UK Governments "Toilets in schools" publication and offer bespoke privacy cubicles to meet these standards where required.

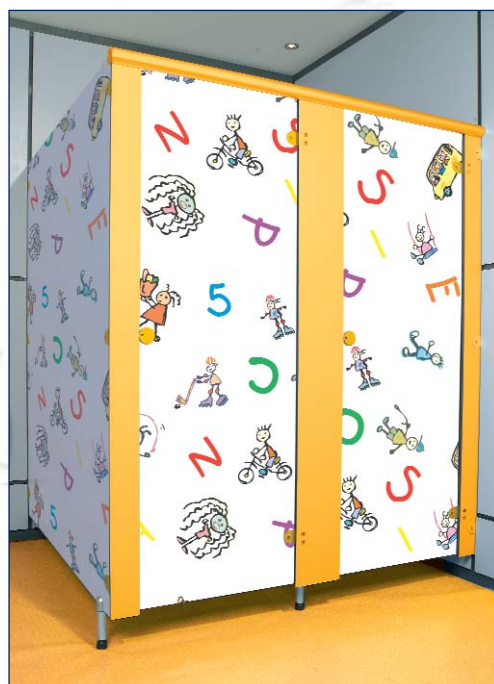


By creating designs specifically for use by children that are friendly, durable and hygienic as well as affordable, our Ecole range provides a perfect answer for schools, from primary, through to junior and senior school.

School washrooms are not just about cubicles, integrated plumbing systems and sanitary ware, they're about attitude, pride and a range of other influential factors that can be triggered by fantastic design and excellent products that can turn a good washroom into a great one.

The Ecole range also includes some bright colours and stunning ironmongery options for both Moisture Resistant Melamine Faced Chipboard (MRMFC) and Compact Grade Laminate (CGL) in addition to the High Pressure Laminates (HPL) shown.

Doors and pilasters can also be shaped for that extra bit of fun.



Matrixe System

Conceived as an adaptive integrated plumbing solution for commercial and public sector applications, Matrixe uses practical and stylish sanitary ware options together with a choice of finish colours and ironmongery to ensure the washroom environment is not only functional and safe but also attractive, easy to clean and virtually maintenance-free.

At the heart of the system is our new EasiFix panel hanging system, which makes the installation of pre-assembled sanitary ware panels easier, simpler and around 30% quicker than alternative systems, saving precious time and money.

The design flexibility afforded by this system, together with the smooth clean lines of the panels create a stylish feel to any washroom and excellent utilisation of space.

Specifying Matrixe integrated plumbing systems means that Pendock Cubicles can also be integrated into the design to produce a complete washroom system that perfectly blends aesthetics, functionality and cost effectiveness in an ideal solution.

All panels are pre-fitted with clips for hanging uprights and panels.



Featuring *Armitage
Shanks*



Matrixe Rapide

Matrixe Rapide provides all the flexibility of bespoke washroom design with the cost and availability benefits of our Rapide MFC cubicles range. By combining the versatile Matrixe integrated plumbing system with Rapide cubicles, Matrixe Rapide is an integrated and value for money solution available on short lead times that is easy to specify and install.

Matrixe Robuste

Matrixe Robuste takes washroom design to a new level by combining the Matrixe integrated plumbing solutions with durable Robuste compact laminate cubicles. Ideal for high traffic and arduous washroom environments, the strength of Matrixe Robuste is matched by its versatility, choice of configurations and finish selection, giving designers total freedom.

Rapide-Xpress & Robuste-Xpress

Where a fast turnaround from order to delivery is needed but with no compromise on quality or ease of installation, then the Matrixe Rapide-Xpress and Robuste-Xpress ranges provide the perfect solution. Using the same washroom systems as our standard Matrixe Rapide and Robuste ranges, the only difference is that there are fewer finish colours to choose from, which enables us to manufacture your bespoke order and get it to site, even quicker.

Matrixe Timber Fix

Where a timber framework is preferred to the Matrixe metal system Matrixe Timber Fix is available.

Matrixe Vanity

Like all the products in our washrooms range, Pendock vanity units benefit from our philosophy of style, simplicity, uncomplicated design and ease of installation.

Designed to integrate fully with our washroom systems range, the vanity units provide an additional level of 'finish' to any washroom. All vanity units are manufactured to customer specifications to ensure they integrate seamlessly with the overall washroom design.

To give wider choice and flexibility of design, three separate ranges are available, which include a pre-formed plywood cill model, post formed cill or a compact grade laminate alternative. As the vanity units are bespoke, the choice of finishes and colours available is exceptionally wide to give maximum design freedom.

A choice of elegant Armitage Shanks washbasins and taps complete the impression of integrated style.



Featuring *Armitage Shanks*

Ironmongery and Metal Pilasters

We have taken great care and expended a huge amount of effort on our ironmongery range used with Pendock Cubicles. We designed the ironmongery as an integral part of our cubicle and washroom systems not just as a functional component. Our indicator latches are simple and easy to use; the hinges are strong and easy to fit and the cubicle feet are quick and easy to set up.

We have also ensured that the hinges are tamper proof and the door latches fit from the front using a simple template for easy drilling of the pilaster, rather than the door. All in all, the ironmongery range is absolutely critical to the integrity of our washrooms, which is why we only offer two standard finishes, so that it provides a clear contrast no matter what the colour combination or washroom finishes are chosen. Our design team can advise on bespoke ironmongery and finishes where required.

Stunning, lightweight and durable aluminium pilasters add style and strength to a washroom.



Sanitary Ware, Taps, Mixers, Water Management and Accessories

Pendock is delighted to offer the UK's leading supplier of washroom sanitary ware, Armitage Shanks on all our integrated plumbing solutions. With the widest range Armitage Shanks offer sanitary ware solutions for healthcare to meet the latest legislation, schools & education, hotels & leisure, the demanding requirements of prisons and special care. They also have a number of exciting new water saving products like the Aridian waterless urinal.

As water management is vital to many areas of the UK Pendock Cubicles has teamed up with the UK's leading supplier of washroom water management systems, Cistermiser. This enables Pendock Cubicles to meet all requirements in all areas of the country.

In addition to sanitary ware, taps, mixers and water management Pendock Cubicles also offer a wide range of accessories for your washrooms from simple coat hooks to high speed dryers as always looking to provide the full washroom solution.



The Pendock Edge

For many years a cubicle's edging has been the true definition of quality. No matter how stunning the design or choice of colour as the edge started to peel so did the manufacturer's reputation.

Pendock have invested in state of the art machinery to bring style, reliability and consistency to Pendock Cubicles edging.

When choosing a Melamine Faced Chipboard (MFC) or High Pressure Laminate (HPL) cubicle instead of HPL edging with a black edge being stuck onto panels a specialised 2mm PVC edging is chosen to either match or contrast with cubicle doors and panels.

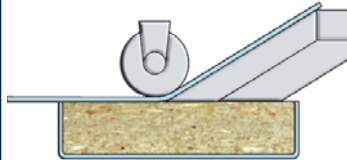
The Pendock Edge is in the finest details that Pendock Cubicles bring that make the completed project shine.

A special multi-function machine

- Mills the board edges to ensure alignment and adhesion.



- Applies hot glue.
- Fixes edging through by a dedicated pressure roller.



- Automatically trims of the edging to precisely match the cubicle or panel.



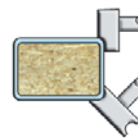
- Machines the outer edges.



- Rounds over the edging to form a continuous seal around the cubicle or panel.



- And finally scrapes of the excess glue and polishes the very highest quality finish.



PENDOCK

Other Pendock products:

Pipe Boxing & Ducting

Architectural Column Casings & Protection

Low Surface Temperature Heating

www.pendock.co.uk

PENDOCK CUBICLES

WASHROOM SYSTEMS

ALUMASC INTERIOR BUILDING PRODUCTS LTD

Halesfield 19, Telford, Shropshire TF7 4QT

Tel: +44 (0) 1952 580590

Fax: + 44 (0) 1952 587805

Web: www.pendockcubicles.co.uk

Email: sales@pendock.co.uk

