



## WG-3 Wall Guard

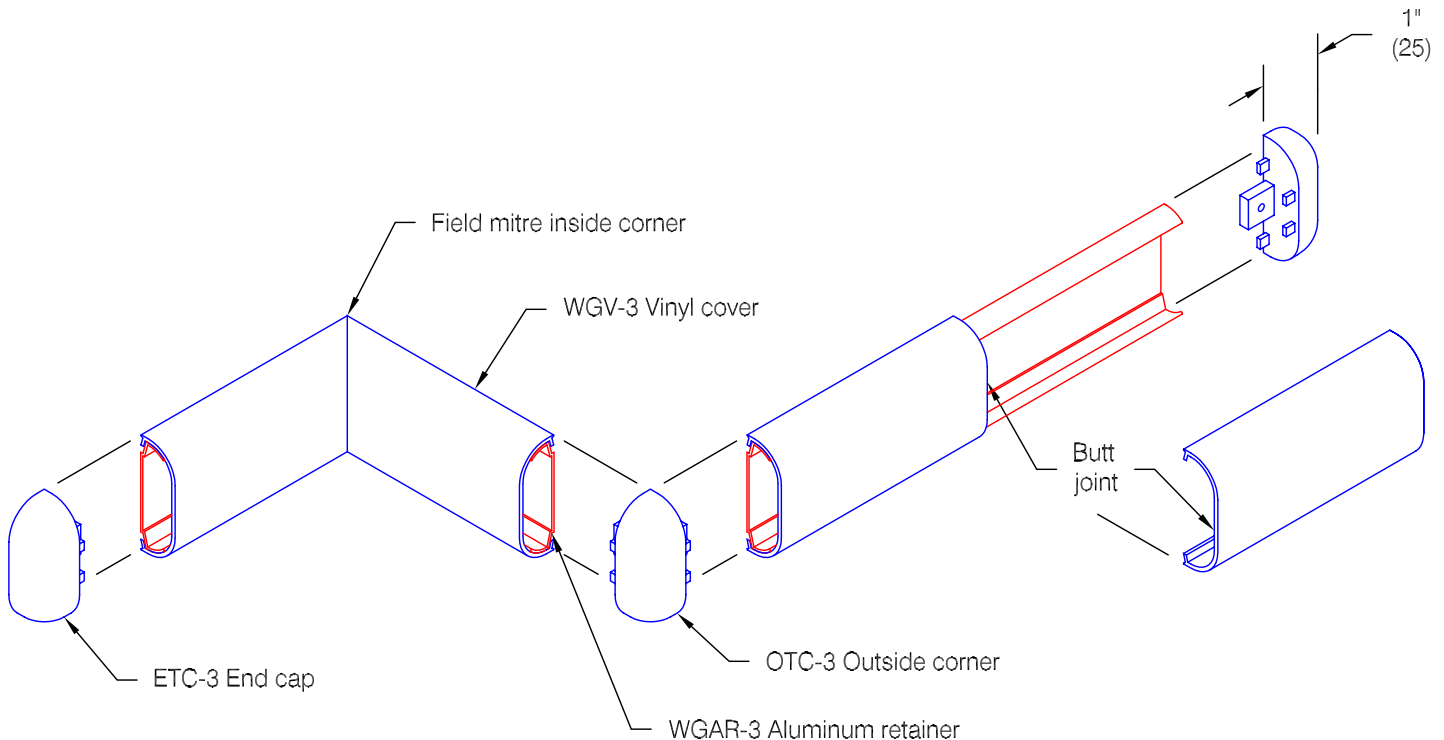
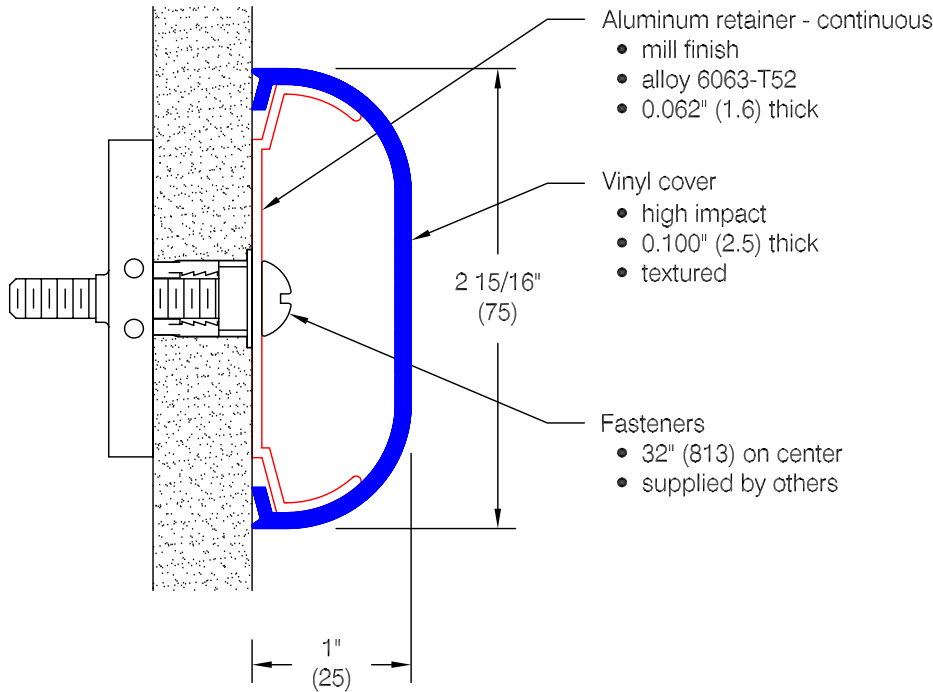
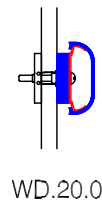
### Features:

- Molded end caps
- Molded outside corners
- Stock length 12'-0" (3658)

### Finishes:

- Manufacturer's standard colors
- Custom colors available
- Grooved (see WD.21.0)

### Optional mounting:



Pawling Corporation reserves the right to discontinue a design or modify an existing design without prior notice

Customer :	Project :	WD.19.0a
Architect :	Sales Rep :	