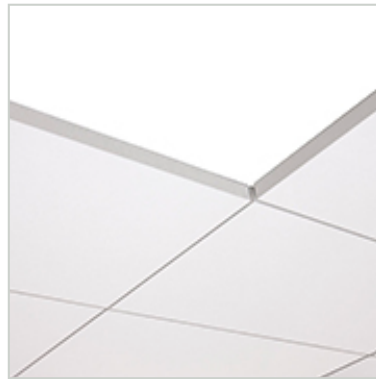


## PARAFON Royal



Certification Number

0809-CPR-1013 / VTT Expert Services Ltd, P.O. Box 1001, FI-02044 VTT, Finland, 24.8.2015

Short Description

PARAFON Royal panels are manufactured using mineral wool (mineral fibre 97.3%, bonding agents approx. 2.7%), with glass fibre tissue or fibreglass fabric on the surface. PARAFON Royal is coated on all its surfaces, and is a fully encapsulated acoustic panel for areas where much is required of its outward appearance and sound proofing qualities.

Application

Offices, commercial premises, residential buildings, schools, nurseries and stairways

Usage Conditions

May be used continuously in 95 % relative humidity at a temperature of 30 °C, occasionally also at 100 % and 40 °C.

### Dimensions

Dimensions		
Thickness	Width x Length	Weight
Edge A, White:		
30 mm	600 x 600 mm	2,6 kg/m <sup>2</sup>
30 mm	600 x 900 mm	2,6 kg/m <sup>2</sup>
30 mm	600 x 1200 mm	2,6 kg/m <sup>2</sup>
30 mm	600 x 1500 mm	2,6 kg/m <sup>2</sup>
40 mm	600 x 600 mm	3,3 kg/m <sup>2</sup>
40 mm	600 x 900 mm	3,3 kg/m <sup>2</sup>
40 mm	600 x 1200 mm	3,3 kg/m <sup>2</sup>
50 mm	600 x 600 mm	4,2 kg/m <sup>2</sup>
50 mm	600 x 900 mm	4,2 kg/m <sup>2</sup>
50 mm	600 x 1200 mm	4,2 kg/m <sup>2</sup>
Edge A, Other colours:		
30 mm	600 x 600 mm	2,6 kg/m <sup>2</sup>
30 mm	600 x 1200 mm	2,6 kg/m <sup>2</sup>
50 mm	600 x 600 mm	4,2 kg/m <sup>2</sup>

50 mm	600 x 1200 mm	4,2 kg/m <sup>2</sup>
-------	---------------	-----------------------

Manufacturing module = -8 mm

## Packaging

Package Type CartonCarton

## Fire Properties

Reaction to Fire		
Property	Value	According to
Reaction to Fire, Euroclass	A2 - s1, d0	EN 13964:2004/A1:2006 (EN 13501-1)

Other Fire Properties		
Property	Value	According to
Combustibility	Base product non-combustible	EN 13964:2004/A1:2006 (EN ISO 1182)

PARAFON Royal Extra fire class is C, s1, d0.

## Thermal Properties

Thermal Resistance		
Property	Value	According to
Thermal Conductivity $\lambda_D$	0.035 W/mK	EN 12667

## Sound Properties

Acoustic Absorption Index		
Property	Value	According to
Sound Absorption $a_w$ , Direct Fixing	Royal White 30 mm: 0,75	EN 13964:2004/A1:2006 (EN ISO 354 / EN ISO 11654)
.	Royal White 40 mm: 0,90	
.	Royal White 50 mm: 1,00	
Sound Absorption $a_w$ , Construction Depth 200 mm	Royal White 30 mm: 0,95	EN 13964:2004/A1:2006 (EN ISO 354 / EN ISO 11654)
.	Royal White 40 mm: 1,00	
.	Royal White 50 mm: 1,00	

## Mechanical Properties

Tensile Flexural/Strength		
Property	Value	According to
Flexural Tensile Strength	1/B/no load	EN 13964:2004/A1:2006

Other Mechanical Properties		
Property	Value	According to
Shatter Properties	NPD	EN 13964:2004/A1:2006

## Emissions

Release of Dangerous Substances to the Indoor Environment		
Property	Value	According to
Release of Formaldehyde	E1	EN 13964:2004/A1:2006
Release of Asbestos	No content of asbestos	EN 13964:2004/A1:2006

## Durability

Durability of Reaction to Fire Against Heat, Weathering, The fire performance of mineral wool  
Ageing/Degradation

does not deteriorate with time. The Euroclass classification of product is related to the organic content, which cannot increase with time.

## Facings

Facing Material	Glass fiber tissue or glass fiber fabric
Gloss Factor	Viva: 2. Cement and Extra: 1
Light Reflectance	Viva approx. 83%, Cement approx. 54%, Metal approx. 42% and Extra approx. 79%

## Colours



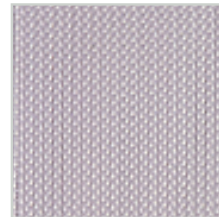
Viva (white NCS S 0500-N)



Cement (grey NCS S 2002-B)



Metal (metallic shimmer NCS S 3005-R80B)

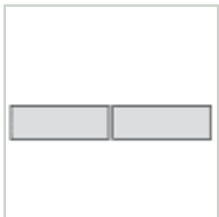


Extra (white fibreglass fabric NCS S 1002-Y)

## Edges

Treatment of Edges	Coating that also remains visible on the edges
--------------------	--

## Edge Variations



A

## Maintenance

May be cleaned using a brush or by vacuum cleaning.

## Disposal and Recycling

May be used as thermal insulation or taken to a dump. No restrictions.

Head Office: PAROC GROUP, P.O. Box 240 (Energiakuja 3), FI-00181 Helsinki Finland, Tel. +358 46 876 8000, [www.paroc.com](http://www.paroc.com)

The information in this brochure describes the conditions and technical properties of the disclosed products, valid at the time of publication of this document and until replaced by the next printed or digital version. The latest version of this brochure is always available on the Paroc website. Our information material presents applications for which the functions and technical properties of our products have been approved. However, the information does not mean a commercial guarantee. We do not assume liability of the use of third party components used in the application or the installation of our products. We cannot warrant the suitability of our products if used in an area or conditions which are not provided in our information material. As a result of constant further development of our products we reserve the right to make alterations to our information material at any time. PAROC is a registered trademark of Paroc Group. This data sheet is valid in following countries: international use (general information).