

orion

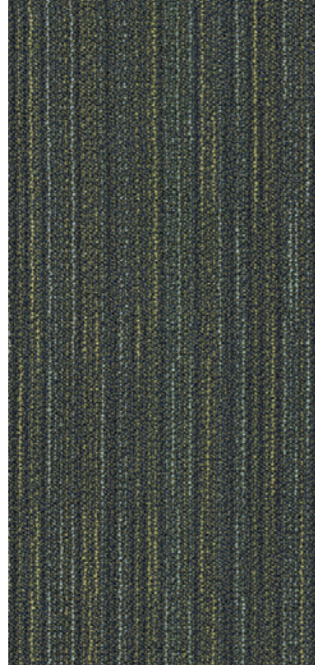
Inspired Perspectives

heavy contract
8 colourways





Rigel 1101
(LRV - L34.60 Y10.95)



Meissa 6602
(LRV - L31.60 Y6.92)



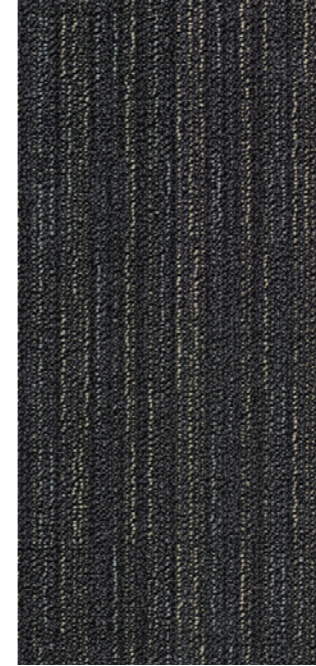
Gliese 1103
(LRV - L30.01 Y6.25)



Bellatrix 1104
(LRV - L31.13 Y6.76)



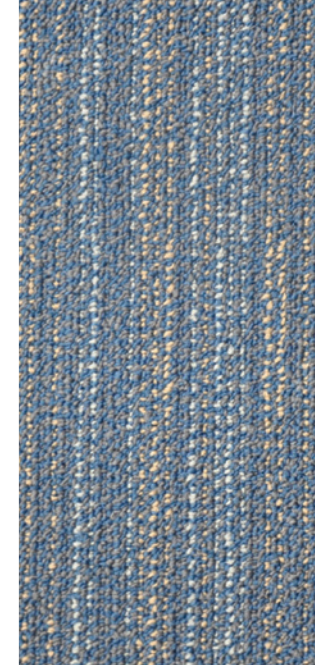
Alnilam 1105
(LRV - L26.84 Y5.05)



Saiph 6606
(LRV - L24.52 Y4.31)



Betelgeuse 8808
(LRV - L18.82 Y2.74)



Alnttak 6607
(LRV - L27.49 Y5.32)



| | |
|--------------|-----------------|
| Product Name | Orion |
| Yarn Type | Universal Nylon |
| Dye Yarn | Solution Dyed |
| Construction | Hi / Lo Loop |
| Pile Height | 4.0 / 3.0mm |
| Tile Size | 500mm x 500mm |

| | |
|---------------------|---|
| Flammability | Cfl-S1 |
| Anti-static | Less than 2kV Suitable for computer rooms |
| Standard Backing | Bitumen |
| Wear Classification | Heavy Contract |

INSTALLATION
 Sub floors should be clean, dry and flat and prepared in accordance with BS5325. Timber floors should be covered with plywood or other appropriate sheet materials. For tiles use F Ball tackifier F41 or Laybond 79. Tiles may be laid tessellated or broadloom. Tiles should be allowed to condition for a minimum of 24 hours at the expected temperature and humidity prevailing when the building is in use. Further installation information is available from the Paragon Sales Office.

COLOUR
 For technical reasons, as with all textile materials, it may not be possible to colour match from different batches. Orders requiring colour match should be placed at the same time. Production may therefore show variations to the sample card.

MAINTENANCE
 It is recommended that a maintenance schedule be initiated from the date of installation to achieve maximum life expectancy of the product. Regular vacuum cleaning with a twin motored upright vacuum cleaner is essential. All spillages and stains should be attended to immediately. For detailed information, please consult the Paragon cleaning and maintenance guide. It is imperative that all internal carpets are well protected from outside soiling and moisture by the use of barrier matting such as MatWorks, also available from Paragon.

545333
13

EN 14041:2004
 Product Type: Bitumen backed tufted carpet tile
 Reaction to fire: Class Cfl-s1
 Slipperiness: NPD

Certificate No: EMST31515
Fully accredited with ISO 9001

FM0954
BS EN ISO 9001

paragon

CARPETS

Farfield Park
Manvers
Wath-upon-Dearne
Rotherham, S63 5DB.

T. +44 (0) 1709 763 839
F. +44 (0) 1709 763 813
E. sales@paragon-carpets.co.uk
W. www.paragon-carpets.co.uk

