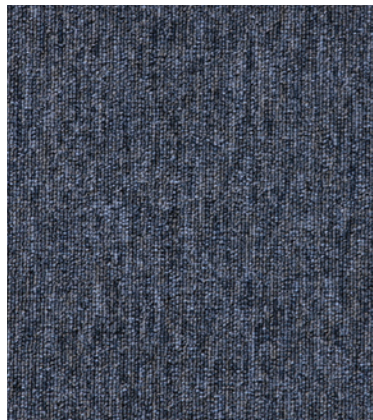


macaw

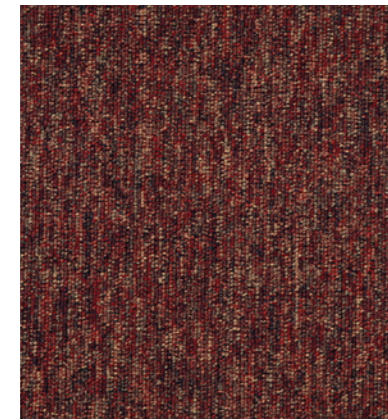
Our high-value low-cost range

general usage and light commercial

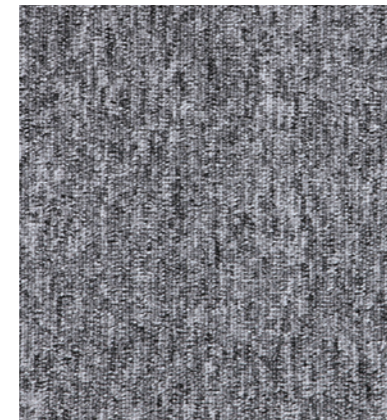
# 5 colourways



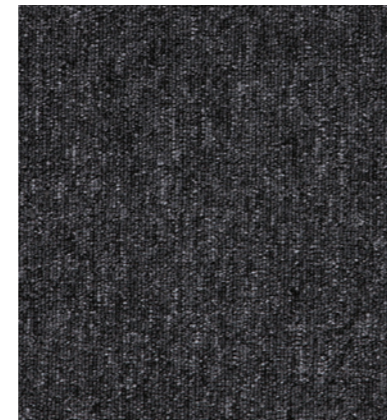
Macaw Aegean (LRV - L34.62 Y8.17)



Macaw Paprika (LRV - L35.82 Y6.24)



Macaw Pewter (LRV - L45.99 Y15.29)



Macaw Quartz (LRV - L28.37 Y5.94)



Macaw Sapphire (LRV - L25.54 Y5.02)

Suitable for general office and light commercial areas

Attractive encapsulated yarn

Available from stock

Bleach resistant yarn

Easy to clean

Passes relevant flammability test

Cost-effective floorcovering solution

Up to 50% recycled content in the bitumen backing



**Style**  
Tufted Loop Pile Tile 1/10" gauge



**Yarn Construction**  
100% Polypropylene



**Pile Yarn Weight**  
420 gsm



**Pile Height**  
3.5mm



**Pile Density**  
133,600 tufts per m2



**Total Weight**  
4200 gsm



**Total Thickness**  
6mm



**Backing**  
Bitumen



**Dimensions**  
50cm x 50cm



**Anti-static**  
< 2Kv body voltage



**Static Load to BS 4939**  
Not less than 80% recovery after 24 hours



**Colour Fastness**  
To Light BS EN (ISO105 - BO2)



**Flammability**  
Floorcoverings tested to BS4790 (Hot Metal Nut Test)

Better than 6

Change in shade 4 - 5

Wet 4 - 5  
Dry 4 - 5

Low Radius of Char

## INSTALLATION

Sub floors should be clean, dry and flat and prepared in accordance with BS5325. Timber floors should be covered with plywood or other appropriate sheet materials. For tiles use F Ball tackifier F41 or Laybond 79. Tiles may be laid tessellated or broadloom. Tiles should be allowed to condition for a minimum of 24 hours at the expected temperature and humidity prevailing when the building is in use. Further installation information is available from the Paragon Sales Office.

## COLOUR

For technical reasons, as with all textile materials, it may not be possible to colour match from different batches. Orders requiring colour match should be placed at the same time. Production may therefore show variations to the sample card.

## MAINTENANCE

It is recommended that a maintenance schedule be initiated from the date of installation to achieve maximum life expectancy of the product. Regular vacuum cleaning with a twin motored upright vacuum cleaner is essential. All spillages and stains should be attended to immediately. For detailed information, please consult the Paragon cleaning and maintenance guide. It is imperative that all internal carpets are well protected from outside soiling and moisture by the use of barrier matting such as Mat.Works, also available from Paragon.





Farfield Park  
Manvers  
Wath-upon-Dearne  
Rotherham, S63 5DB.

T. +44 (0) 1709 763 839  
F. +44 (0) 1709 763 813  
E. [sales@paragon-carpets.co.uk](mailto:sales@paragon-carpets.co.uk)  
W. [www.paragon-carpets.co.uk](http://www.paragon-carpets.co.uk)