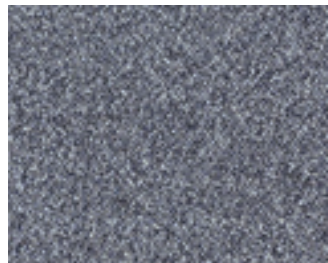


# colourquest

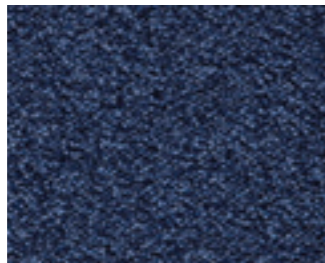
Heavy contract range with a depth of 24 colours

heavy contract  
24 colourways

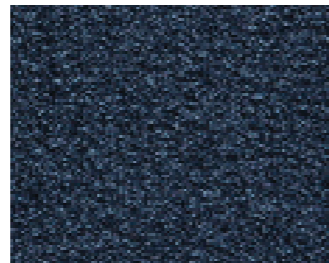




Delta Quadrant



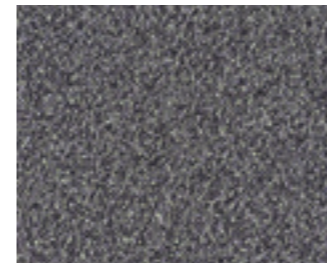
Lunar Walk



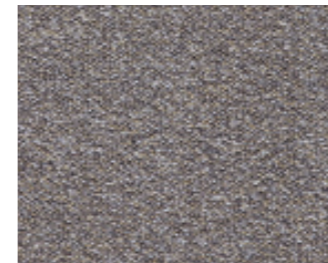
Drakes Discovery



Antarctic Spirit



Dukes Medina



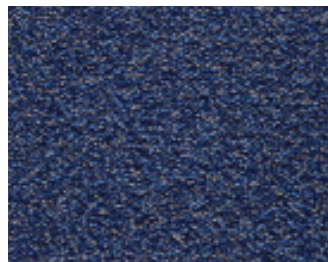
Time Traveller



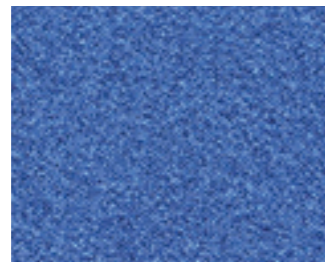
Sherpa's Delight



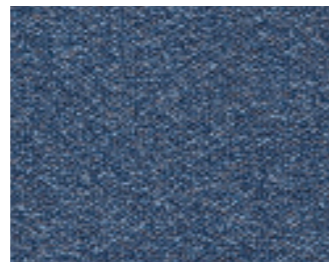
Port Royal



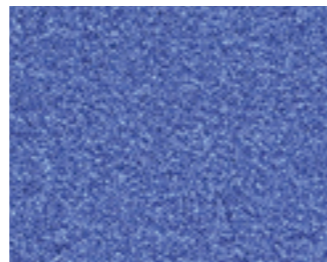
Space Age



Tranquility Base



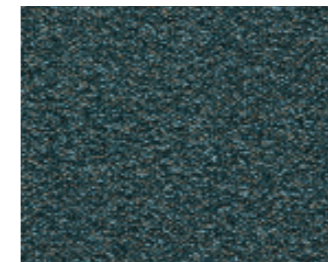
Bermuda Triangle



Cobalt Velvet



Deep Jade



Cook Island



Magellan's Glow



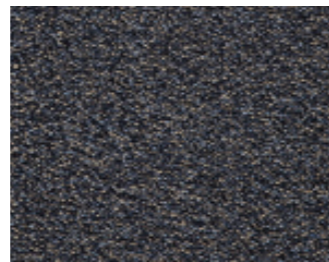
Incans Treasure



Texas Tea



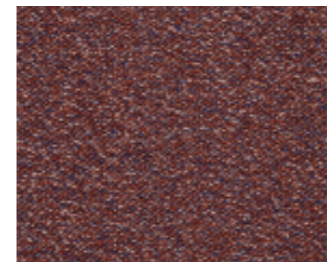
Final Frontier



Cosmic Shadow



Base Camp



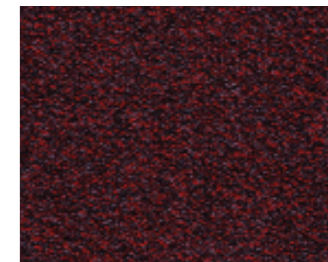
Barrier Reef



Yukon Pass



Mexican Spice



Spanish Main



## Heavy Contract

Available in 24 colours

Aquafil Alto Yarn

10 year warranty

Anti-static

Attractive loop pile surface

Passes the relevant flammability test

Suitable for office and commercial areas

Recyclable - Product can be repurposed at the end of its lifecycle as a non standard option

**S** Style  
Tufted Loop Pile 1/10" gauge

**F** Yarn Construction  
100% Aquafil Alto Nylon

Pile Yarn Weight  
730 gsm

Pile Height  
3.5mm

Pile Density  
108,350 tufts per m2

Total Weight  
4395 gsm

Total Thickness  
7mm

Backing  
Bitumen

Dimensions  
50cm x 50cm

Wear Classification  
Heavy Contract

Anti-static  
Suitable for use in computer rooms

Colour Fastness  
To Light (BS EN ISO105-B02) 5  
To Wet Rubbing (BS EN ISO105-E01) 3  
To Dry Rubbing (BS EN ISO105-X12) 3

Flammability  
Flammability BS EN ISO 11925.2 CFL - S1  
BS EN ISO 9239.1

Castor Chair Test  
BS EN 985 3.2  
Suitable for continuous use

**10** Warranty  
10 Years

### INSTALLATION

Sub floors should be clean, dry and flat and prepared in accordance with BS5325. Timber floors should be covered with plywood or other appropriate sheet materials. For tiles use F Ball tackifier F41 or Laybond 79. Tiles may be laid tessellated or broadloom. Tiles should be allowed to condition for a minimum of 24 hours at the expected temperature and humidity prevailing when the building is in use. Further installation information is available from the Paragon Sales Office.

### COLOUR

For technical reasons, as with all textile materials, it may not be possible to colour match from different batches. Orders requiring colour match should be placed at the same time. Production may therefore show variations to the sample card.

### MAINTENANCE

It is recommended that a maintenance schedule be initiated from the date of installation to achieve maximum life expectancy of the product. Regular vacuum cleaning with a twin motored upright vacuum cleaner is essential. All spillages and stains should be attended to immediately. For detailed information, please consult the Paragon cleaning and maintenance guide. It is imperative that all internal carpets are well protected from outside soiling and moisture by the use of barrier matting such as MatWorks, also available from Paragon.



# paragon

CARPETS

Farfield Park  
Manvers  
Wath-upon-Dearne  
Rotherham, S63 5DB.

T. +44 (0) 1709 763 839  
F. +44 (0) 1709 763 813  
E. [sales@paragon-carpets.co.uk](mailto:sales@paragon-carpets.co.uk)  
W. [www.paragon-carpets.co.uk](http://www.paragon-carpets.co.uk)