

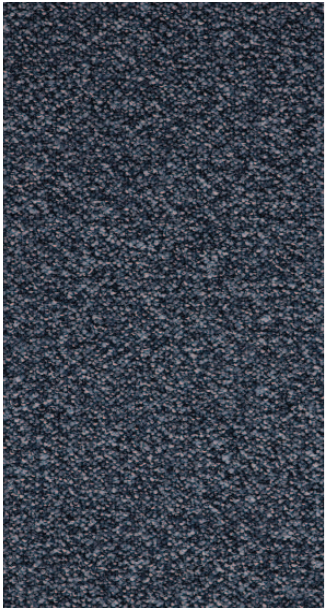
colour quest

A balanced range of modern, heavy contract colours for any application

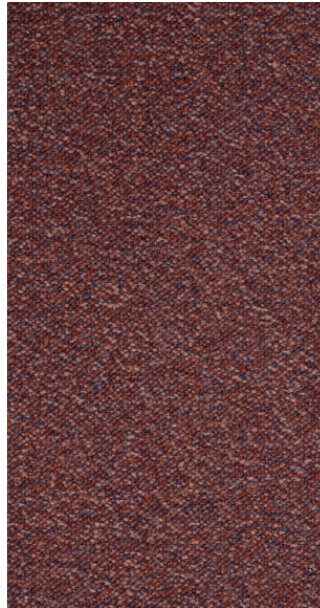
heavy contract

12 colourways

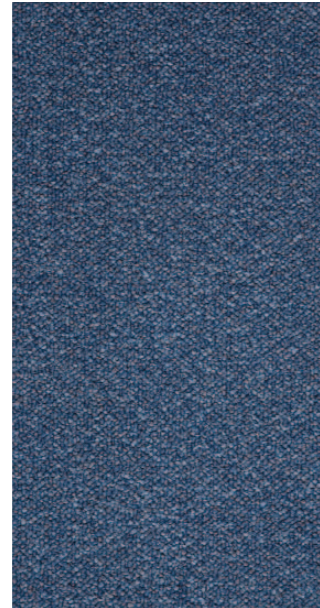




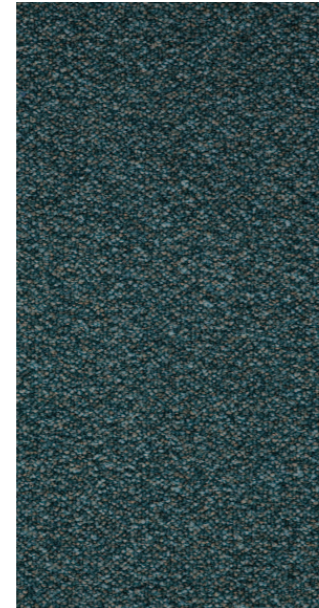
Antarctic Spirit



Barrier Reef



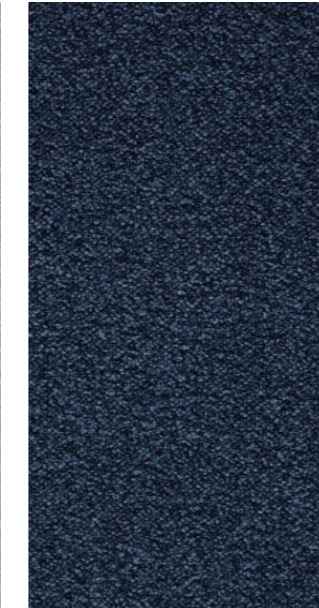
Bermuda Triangle



Cook Island



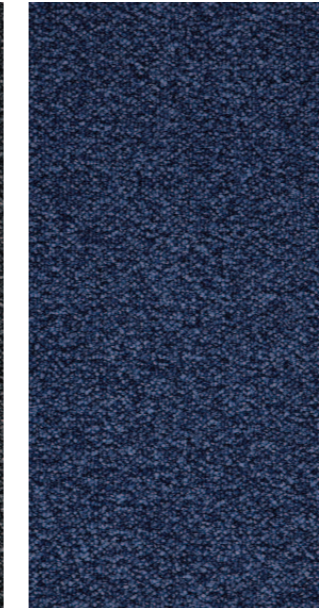
Cosmic Shadow



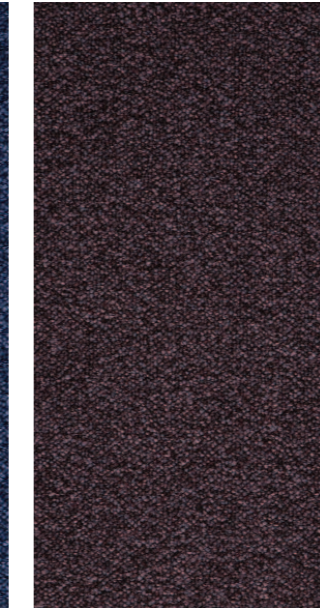
Drake's Discovery



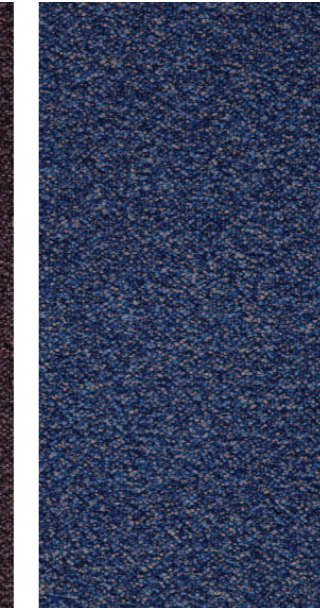
Final Frontier



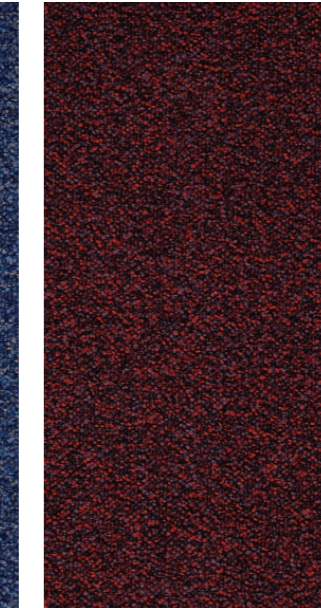
Lunar Walk



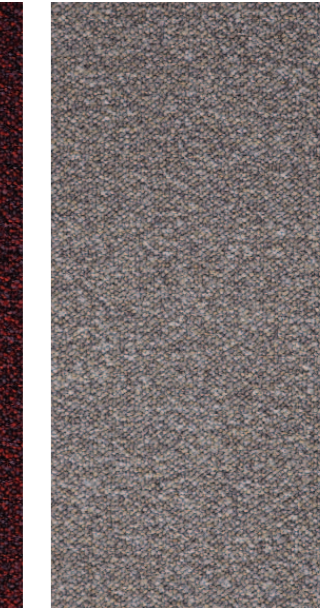
Port Royal



Space Age



Spanish Main



Time Traveller



- Heavy Contract

- Available in 12 colours

- Aquafil Alto Yarn

- 10 year warranty


- Anti-static






- Attractive loop pile surface

- Passes the relevant flammability test

- Suitable for office and commercial areas

- Recyclable - Product can be repurposed at the end of its lifecycle as a non standard option

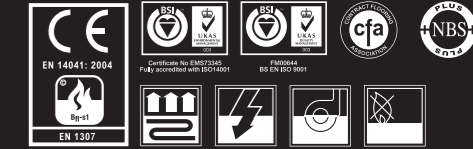
-  **Style**
Tufted Loop Pile 1/10" gauge
-  **Yarn Construction**
100% Aquafil Alto Nylon
-  **Pile Yarn Weight**
730 gsm
-  **Pile Height**
3.5mm
-  **Pile Density**
108,350 tufts per m2
-  **Total Weight**
4395 gsm
-  **Total Thickness**
7mm
-  **Backing**
Bitumen
-  **Dimensions**
50cm x 50cm
-  **Wear Classification**
Heavy Contract

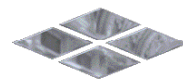
-  **Anti-static**
Suitable for use in computer rooms
-  **Colour Fastness**
To Light (BS EN ISO105-B02) 5
To Wet Rubbing (BS EN ISO105-E01) 3
To Dry Rubbing (BS EN ISO105-X12) 3
-  **Flammability**
Flammability BS EN ISO 11925.2 CFL - S1
BS EN ISO 9239.1
-  **Castor Chair Test**
BS EN 985 3.2
Suitable for continuous use
-  **Warranty**
10 Years

INSTALLATION
Sub floors should be clean, dry and flat and prepared in accordance with BS5325. Timber floors should be covered with plywood or other appropriate sheet materials. For tiles use F Ball tackifier F41 or Laybond 79. Tiles may be laid tessellated or broadloom. Tiles should be allowed to condition for a minimum of 24 hours at the expected temperature and humidity prevailing when the building is in use. Further installation information is available from the Paragon Sales Office.

COLOUR
For technical reasons, as with all textile materials, it may not be possible to colour match from different batches. Orders requiring colour match should be placed at the same time. Production may therefore show variations to the sample card.

MAINTENANCE
It is recommended that a maintenance schedule be initiated from the date of installation to achieve maximum life expectancy of the product. Regular vacuum cleaning with a twin motored upright vacuum cleaner is essential. All spillages and stains should be attended to immediately. For detailed information, please consult the Paragon cleaning and maintenance guide. It is imperative that all internal carpets are well protected from outside soiling and moisture by the use of barrier matting such as MatWorks, also available from Paragon.





paragon

Farfield Park
Manvers
Wath-upon-Dearne
Rotherham, S63 5DB.

T. +44 (0) 1709 763 839
F. +44 (0) 1709 763 813
E. sales@paragon-carpets.co.uk
W. www.paragon-carpets.co.uk