

# Traffic | Wall™

Wall Lining Solution



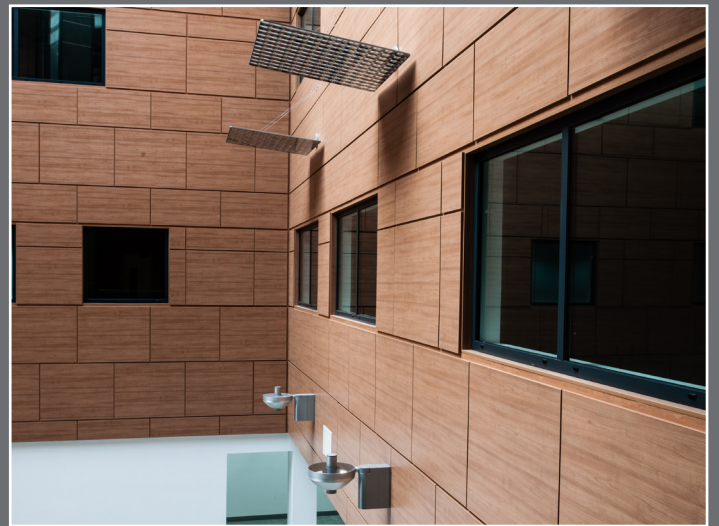
panelock

version #3

# Traffic | Wall™

Panelock - TrafficWall is a wall lining solution designed to offer simple, quick, cost effective solutions for Architects and Designers to specify high quality architectural wall panelling.

TrafficWall panels can be supplied in a variety of composites (Wood, Glass, Phenolic) with a range of performance, texture and finish options available.



Panelock - TrafficWall Acoustical panels installed in the Atrium of a University



## A Wall Lining Solution

Panelock - TrafficWall is a beautifully simple wall panelling solution offered in a wide range of natural and durable materials, delivering a visually stunning, high performance solution.

Beautifully simple in it's modular design, easy to specify, quick to install, and with a wide range of décors, textures and natural finishes, durable TrafficWall is unsurpassed in both quality and integrity.

Wherever there is a need for wall panels, be it wood, glass, phenolic or a custom product, TrafficWall is the smart solution. Fully integrated system components include Galvanised Steel supports and concealed fixing hardware, precision machined, and fully machined panels precision machined for fixing Panel Hanging Brackets, and multiple reveal and panel edge options. The result is a modular solution that is tailored to the unique needs and aesthetic demands of a project.

Because of its modular architecture and highly configurable hardware array, the TrafficWall Wall Lining Solution can be shipped to meet the most demanding of lead times, and installed far more quickly and effectively than traditional wall panel systems.

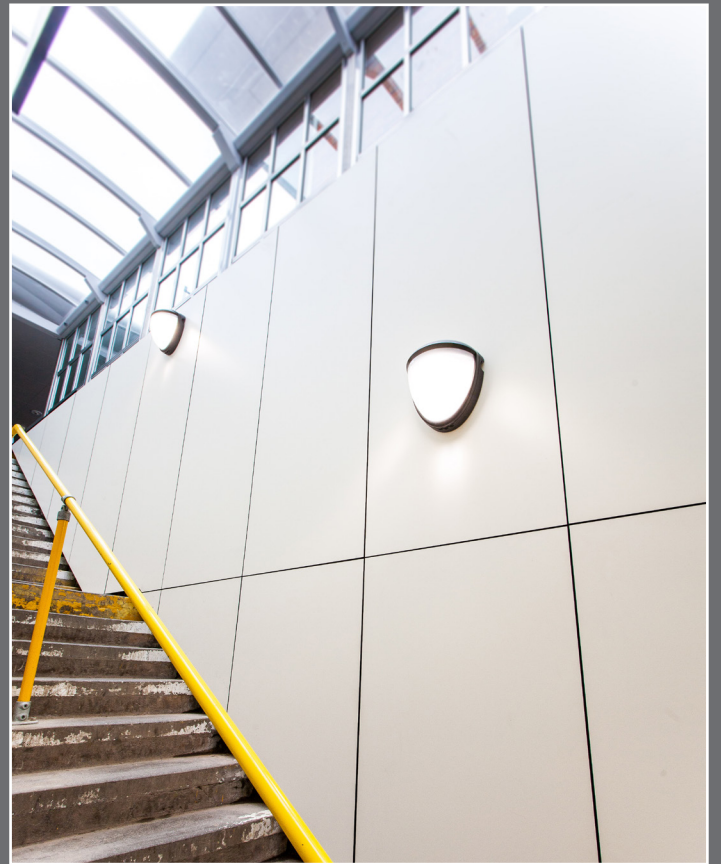
The parametric design provides unlimited panel size options.

## TrafficWall Difference

Panelock - TrafficWall is a system that comprises steel vertical Uprights that are fixed to the wall elevation and made square with integral adjustable fasteners. The Uprights are precision machined to suit the additional steel components. The panels are precision machined and pre-fit with specific inserts to suit the Panel Bolts and Panel Hanging Brackets provided. The panel hangs square every time and are installed in half the time of traditional panels. Composite panels are available in wood, glass and phenolic material.



Panelock - TrafficWall Phenolic panels installed in a Train Station Subway





## TrafficWall for Restrooms

Panelock - TrafficWall integrates with other Panelock products, such as our Restroom Cubicles.

TrafficWall fully integrates with our cubicle ranges to provide Restroom environments that are hygienic, rugged, private and secure.

Concealed hardware delivers advanced modern design.

## The most demanding conditions demand the toughest composites

The TrafficWall panels are available in Solid Compact Laminate from all leading manufacturers and are ideal for high traffic environments such as Academies, Airports, Hospitality, Healthcare, Restrooms and Train Stations.

Providing high impact, water resistant surfaces in a plethora of solid décors and patterns, Panelock - TrafficWall panels are the suitable option.

## Clean, Translucent Glass

Luxurious, clean, reflective - TrafficWall Glass Wall Panels are available with solid wood cores, solid colours and patterns, as well as translucent options.

Suitable for Elevator cabs, Hospitality and Corporate Environments, TrafficWall Glass provides the wow factor.

## Self Healing Steel

All TrafficWall steel components have a self healing metallic coating that offers protection in the harshest environments. The innovative metallic coating is corrosion resistant to ensure optimal surface protection against long term wear and tear.

## Composite Panelling

TrafficWall material types fall into four main categories, each providing solutions for every type of environment.

### Natural Wood

Available in SanFoot species cuts, these panels typically have a particleboard, plywood or MDF substrate. The substrate can also be moisture resistance or fire rated. The SanFoot is applied to the face and a matching wood is applied to the edges. The panels are typically 1/2" (12mm) or 3/4" (18mm) thick. Custom stains and sheen levels are available. Perfect for Hospitality and Corporate Environments.



### Phenolic or Compact Laminate

Phenolic panels are solid rigid sheets of HPL made with two decorative sides. The core can be determined by the manufacturer. Phenolic is waterproof, and incredibly strong, making it the perfect material type for high traffic or wet areas. Phenolic is available in hundreds of décors, patterns and wood-grains. The panels are typically 3/8" (10mm) or 1/2" (12mm) thick.



### Glass

Glass panels can be either single or double pane glass with a colour back film, interlayer or double pane with a solid wood (SanFoot) or translucent wood interlayer. They can also be tempered. Easy to clean and hygienic, glass panels can be opaque or backlit to add that wow factor. Typically, glass panels are 1/4" (6mm), 1/2" (12mm) or 3/4" (18mm) thick and the edges are polished.



### Custom

Custom substrates such as aluminium, non combustible and light-weight honeycomb, GRP / GRC and custom finishes such as HPL and Acoustical are also available. Each is uniquely configured on a project by project basis to deliver project specific solutions.



---

panelock

concept, development, creation.

Panelock Ltd.

26 Brunel Road  
Earlstrees Industrial Estate  
Corby  
Northants  
NN17 4JW

Telephone +44 (0) 1536 443978  
Fax: +44 (0) 1536 443694  
Email: [enquiries@panelockltd.co.uk](mailto:enquiries@panelockltd.co.uk)

[www.panelockltd.co.uk](http://www.panelockltd.co.uk)

---