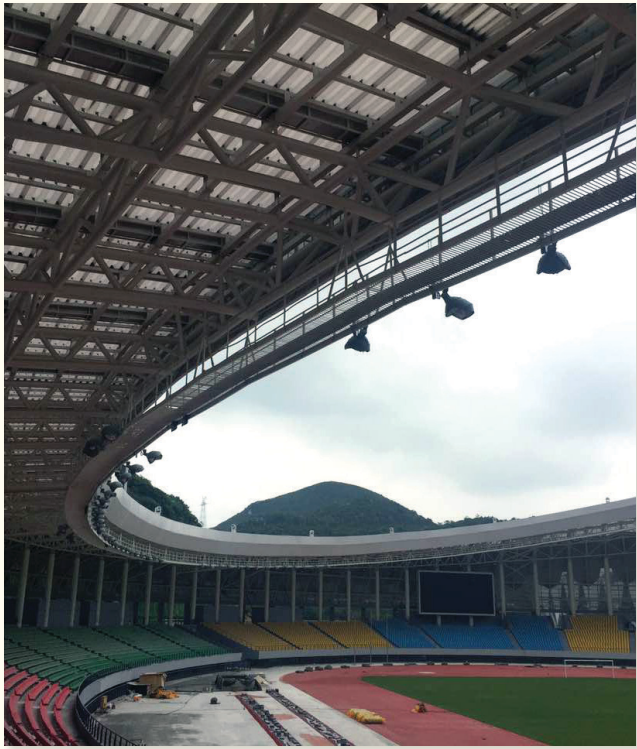




## Project of the Month

### SUNTUF® Solution Covers the New Stadium in Anshun, China

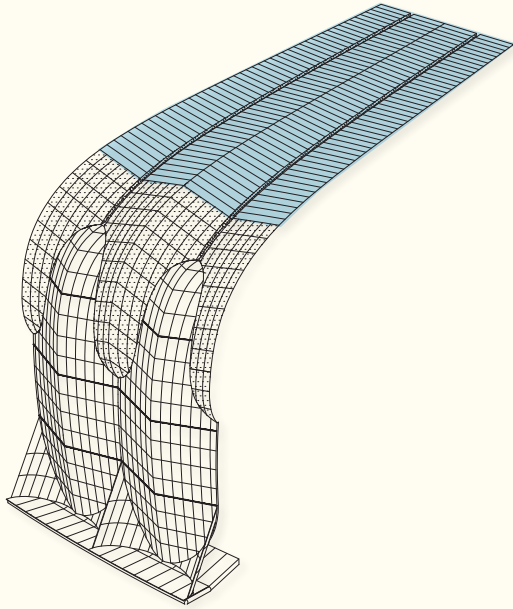


One of China's newest and largest stadiums was recently completed in Anshun, a city in southwestern China. The design of the stadium was released in 2013 by Tangshan City Design Institute, one of China's leading designers of sports venues. Inspiration for the design came from China's tallest waterfall, Huang Guo Shu, which is located near Anshun. The designer considered different options for a material to cover the roof, including fiberglass and metal panels. Palram convinced the architect that Suntuf is a superior option and justifies the price, which was considerably higher than some competitors' offers.

#### Meeting the Design Requirements

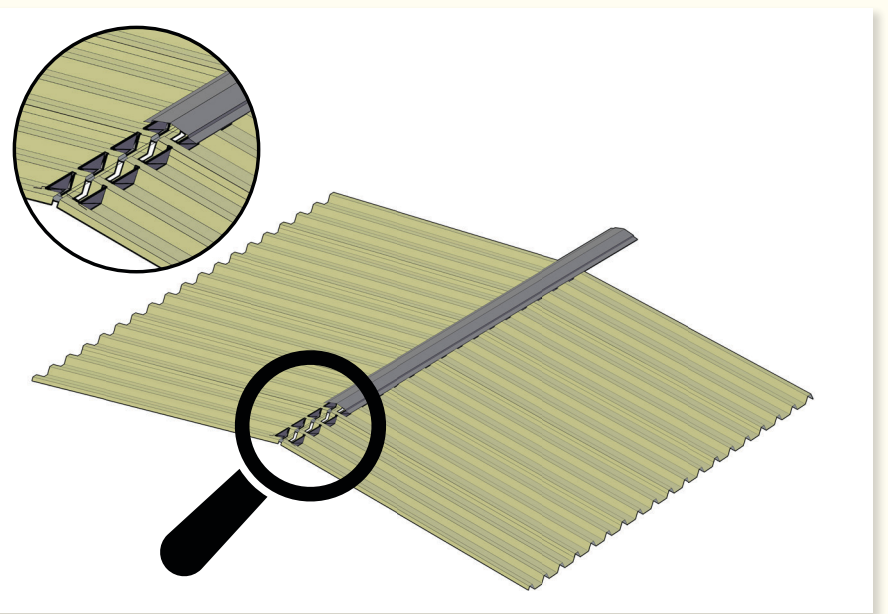
The Anshun stadium roof has an oval design, with a main slope toward the perimeter of the stadium, reminiscent of a cascading waterfall. In addition, the roof is broken down into slices, marked by alternating ridges and gutters which are perpendicular to the oval perimeter and create lesser slopes. The Suntuf sheets were laid in the direction of the lesser slopes.

The architect wanted the lesser slopes to gradually diminish toward the center of the stadium. In order to meet this requirement, Palram delivered the sheets in multiple lengths, gradually shorter toward the oval's center. The sheets were cut before delivery to 190 different lengths and were clearly marked so that the builders on site will know the order in which to place them.



#### Palram's Winning Proposition

- Suntuf 7770 is a thick and robust sheet. Choosing this profile allowed the constructor to lay the sheets directly on the primary steel. There was no need for any secondary steel infrastructure.
- The solution included a Palram proprietary aluminum sliding mechanism, which allows the Suntuf sheets to slide freely when expanding and contracting. This allowed the designer to use a single sheet from ridge to gutter with no end laps.
- Palram designed a special metal gap closure which was fastened to the Suntuf sheets; together with a metal ridge cap the solution is totally water proof.
- Color chosen was Solar Ice, for both aesthetic and practical reasons. Suntuf Solar Ice transmits 20% light while keeping the heat away from the spectators. The color resembles the white water created by the rushing waterfall.



Following the success of Anshun's Suntuf solution, the architect now has five stadiums in progress with Palram.

#### The details

**Product:** Suntuf 7770, 3 mm, solar ice, embossed

**Coverage:** 14,000 SQM

**Customer:** Guizhou Provincial Government

**Architect:** Tangshan City Design Institute

**Palram contact:** **Marketing:** Tal Furman **Sales:** Meng Ai Guo