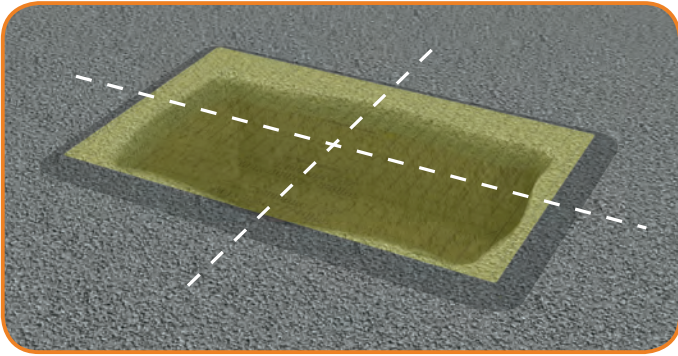


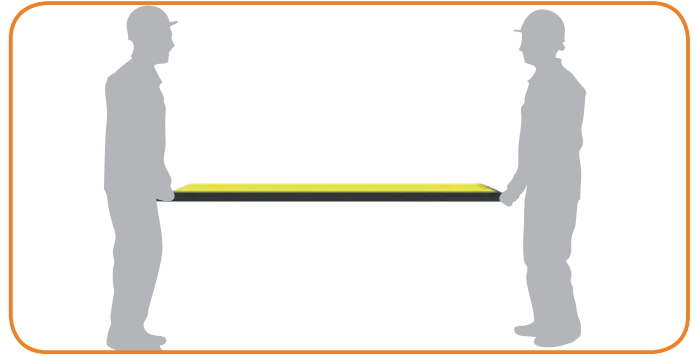


## LOWPRO TRENCH COVER INSTALLATION GUIDE

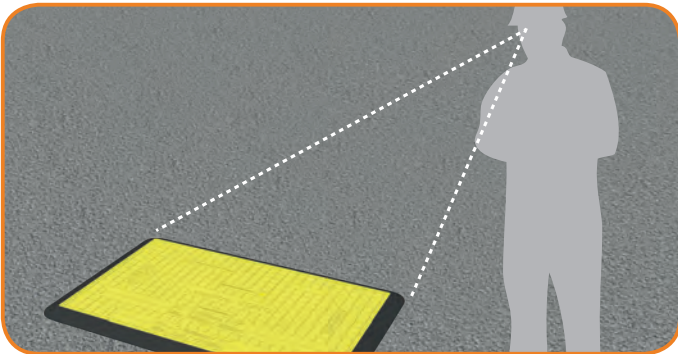
## INSTALLATION INSTRUCTIONS



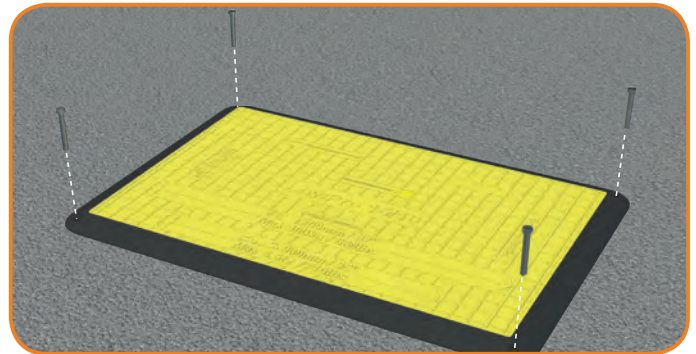
1. Place the cover centrally over the damaged area.



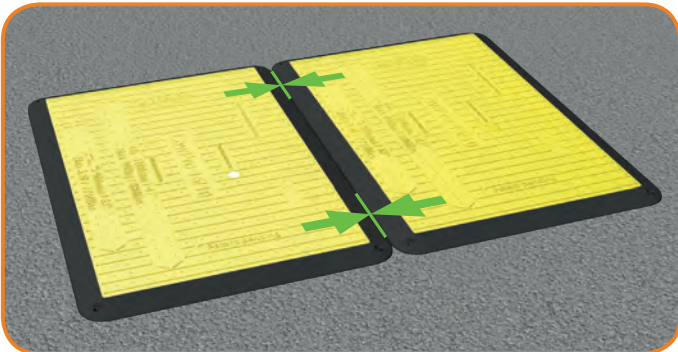
2. A driveway board, such as LowPro 15/10, is a 2 person lift with one at either end.



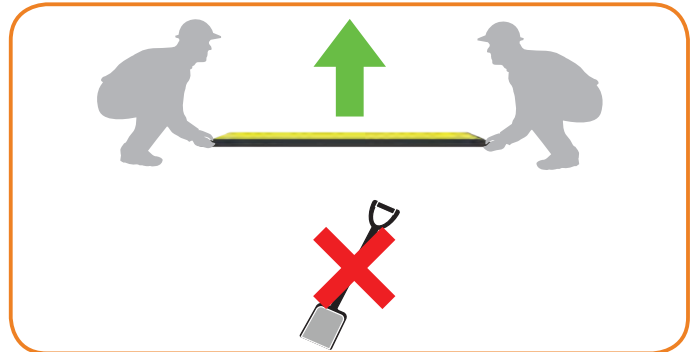
3. Check the surrounding surface and the areas where the rubber edges will be resting.



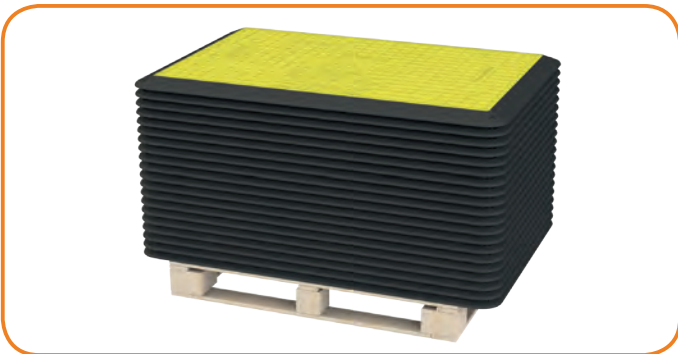
4. If area is uneven secure the cover via the corner holes. Use an appropriate fixing pin dependent upon the ground surface.



5. When installing 2 covers next to each other, ensure the covers are touching to minimise the gap between them.



6. Lift by hand. Do not use tools to aid lifting.



7. Store on a pallet.

 +44 (0) 1608 678888  
sales@oxfordplastics.com  
www.oxfordplastics.com  
www.oxfordplasticsusa.com

Scan QR code for installation guide:



Installation guides also available at [www.oxfordplastics.com](http://www.oxfordplastics.com)

Find this label on Oxford LowPro Trench Covers.  
Scan the QR code for product installation guides.